

Converting Colors

HunterLab(49.9835, 41.3911,
-1.4698)

Have a look what the booklet for
HunterLab(49.9835, 41.3911,
-1.4698) contains.

HunterLab(50.0507, 41.1900, -1.6267)	3
<i>Conversions</i>	4
<i>Details</i>	6
<i>Harmonies</i>	12
<i>Previews</i>	24
<i>Color Blindness Simulation</i>	28
<i>CSS Examples</i>	31

Color

**HunterLab(50.0507, 41.1900,
-1.6267)**

Conversions

Conversions Part 1

Format	Color
Hex	D06694
RGB	208, 102, 148
RGB Percent	82%, 40%, 58%
CMY	0.1843, 0.6000, 0.4196
CMYK	0.00, 0.51, 0.29, 0.18
HSL	334°, 53%, 61%
HSV	334°, 51%, 82%
XYZ	36.1090, 25.0507, 30.9490
YIQ	138.9380, 48.4100, 36.7780

Conversions

Conversions Part 2

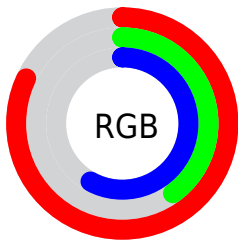
Format	Color
R _Y B	208, 102, 148
Decimal	13657748
CIE Lab	57.13, 46.93, -5.42
CIE LCh	57, 47.244, 353.411
Yxy	25.0520, 0.3920, 0.2720
Android (android.graphics.Color)	4291847828 (0xFFD06694)
YUV	138.9380, 4.4676, 60.5674
Hunter-Lab	50.0507, 41.1900, -1.6267

Details

The HunterLab color **50.0507, 41.1900, -1.6267** is a light color, and the websafe version is hex **CC6699**. A complement of this color would be **71.0956, -37.6519, 14.6411**, and the grayscale version is **50.7574, -2.7083, 2.7577**.

A 20% lighter version of the original color is **70.2148, 39.2887, -3.2293**, and **31.0467, 37.7648, -1.8053** is the 20% darker color. If you saturate the color by 10%, you get **45.9450, 49.4754, -0.9897**, and if you desaturate by 10%, it is **54.8251, 32.3246, -1.5056**.

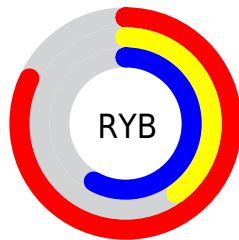
Distribution



Red (82%)

Green (40%)

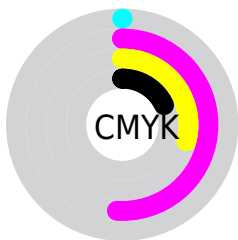
Blue (58%)



Red (82%)

Yellow (40%)

Blue (58%)

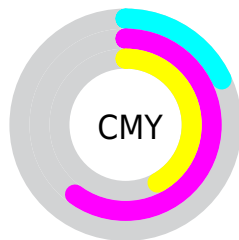


Cyan (0%)

Magenta (51%)

Yellow (29%)

Black (18%)



Cyan (18%)

Magenta (60%)

Yellow (42%)

Brightness & Saturation Gradients

These gradients show how the HunterLab color 50.0507, 41.1900, -1.6267 changes by changing the brightness by 10 percent. The first figure shows a shift by +10% for each color and the second figure -10%.

Similar to the brightness gradients but the following saturation gradients show a change of the HunterLab color 50.0507, 41.1900, -1.6267 by changing the saturation by 10% instead.

50.0507, 41.1900,
-1.6267

50.0507, 41.1900,
-1.6267

166.7623, 51.6131,
2.7311

40.1445, 39.5275,
-1.8836

71.9316, 44.1643,
-0.9489

30.9937, 37.7551,
-2.0801

83.8234, 45.4923,
-0.5396

22.6685, 35.8929,
-2.2061

96.3068, 46.7223,
-0.0875

15.2604, 34.0263,
-2.2494

109.3548, 47.8608,
0.4046

8.8820, 32.6157,
-2.2248

122.9440, 48.9139,
0.9344

0.0000, INF, -NF

0.0000, NaN, NaN

137.0538, 49.8871,

1.4998

0.0000, NaN, NaN

151.6654, 50.7853,
2.0993

0.0000, NaN, NaN

■ 50.0507, 41.1900,
-1.6267

■ 50.0507, 41.1900,
-1.6267

■ 45.9450, 49.4754,
-0.9897

■ 54.8251, 32.3246,
-1.5056

■ 42.6040, 56.6508,
0.4979

■ 60.1652, 23.2615,
-0.7577

■ 40.1075, 62.0847,
2.8464

■ 65.9839, 14.2201,
0.4944

■ 38.4796, 65.2674,
5.9212

■ 72.2071, 5.3139,
2.1456

■ 37.6198, 66.3990,
9.0078

■ 78.7745, -3.4112,
4.1124

■ 85.6375, -11.9472,
6.3306

■ 92.7575, -20.3053,
8.7516

■ 95.5784, -21.9114,
6.3063

■ 95.9602, -19.7572,
0.8667

Harmonies

Analogous

The Analogous color harmony consists of three colors that are next to each other on the color wheel.



50.0519, 31.8239, -24.1233



50.0507, 41.1900, -1.6267



50.0519, 37.4086, 15.1146

Triad

The Triadic color harmony groups three colors that are evenly spaced from another and form a triangle on the color wheel.



50.0519, 41.1872, -1.6255



50.0519, -16.9592, 25.9094



50.0519, -23.4610, -36.0961

Complementary

The Complementary color scheme is a pair of colors which are on the opposite of each other on the color wheel.



50.0507, 41.1900, -1.6267



71.0956, -37.6519, 14.6411

Split Complementary

Split-complementary colors differ from the complementary color scheme. The scheme consists of three colors, the original color and two neighbors of the complement color.



50.0519, -33.1155, -13.9631



50.0507, 41.1900, -1.6267



50.0519, -29.7909, 19.9000

Square

The Square scheme is like the rectangle color scheme, but the four colors are evenly spaced on the color wheel.



50.0519, 41.1872, -1.6255



50.0519, 1.7841, 27.0429



50.0519, -35.2378, 6.7159



50.0519, -6.9800, -48.4580

Rectangle

The Rectangle color scheme consists of four colors that form a rectangle on the color wheel.



50.0507, 41.1900, -1.6267



50.0519, 28.1955, 21.8105



50.0519, -35.2378, 6.7159



50.0519, -27.5014, -29.2182

Sweetspot

The Sweet Spot groups the original color and five complimentary colors.



50.0519, 41.1872, -1.6255



87.5557, 11.3950, 1.7707



46.4358, 36.7294, -46.9370



39.7351, 6.3792, 0.6149

0.0000, NaN, NaN



46.2646, -2.4686, 2.5136

Same Dimension

The Same Dimension uses a secret algorithm to generate beautiful new colors.



50.0519, 41.1872, -1.6255



57.4955, 63.0411, -1.1425



49.9486, 33.0253, 16.4331



34.4851, 1.8617, 1.1453



29.7309, 52.5344, 6.6587



7.1416, 12.8283, -0.0212

Inverse Universe

The Inverse Universe completely reimagines the original color for something new.



50.0519, 41.1872, -1.6255



57.4955, 63.0411, -1.1425



70.6751, -27.3267, -6.9903



34.4851, 1.8617, 1.1453



29.7309, 52.5344, 6.6587



7.1416, 12.8283, -0.0212

Previews

White Background



This preview shows how the HunterLab color 50.0507, 41.1900, -1.6267 looks on a white background.

Color Contrast Check

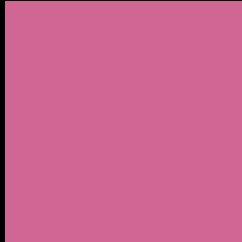
Large Text (above 18pt) WCAG AA ✓ Pass

Any Text WCAG AA × Fail

Large Text (above 18pt) WCAG AAA × Fail

Any Text WCAG AAA × Fail

Black Background



This preview shows how the HunterLab color 50.0507, 41.1900, -1.6267 looks on a black background.

Color Contrast Check

Large Text (above 18pt) WCAG AA ✓ Pass

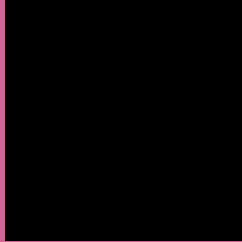
Any Text WCAG AA ✓ Pass

Large Text (above 18pt) WCAG AAA ✓ Pass

Any Text WCAG AAA × Fail

If you want to check with other color combinations, try the [Color Contrast Checker](#).

HunterLab 50.0507, 41.1900, -1.6267 Background



This preview shows how black text looks on a background with the HunterLab color 50.0507, 41.1900, -1.6267.



This preview shows how white text looks on a background with the HunterLab color 50.0507, 41.1900, -1.6267.

-1.6267.

Color Blindness Simulation

Color vision deficiency is a very complex topic, and I could not describe the different causes any better than Wikipedia does, so if you want to learn more, you should check out their [article about color blindness](#).

Dichromacy



Original Color

50.0507, 41.1900, -1.6267

Protanopia

50.2558, 1.7922, -13.8680

Deuteranopia

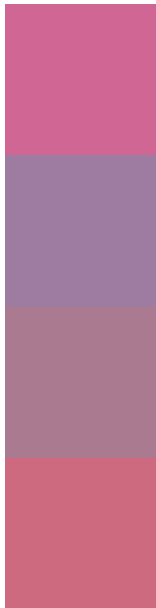
50.1476, 3.8627, 0.2441



Tritanopia

49.9652, 32.9243, 11.7581

Trichromacy



Original Color

50.0507, 41.1900, -1.6267

Protanomaly

49.2880, 14.5337, -10.4936

Deuteranomaly

49.5070, 16.6543, -1.2840

Tritanomaly

49.9884, 35.7279, 7.2060

Monochromacy



Original Color

50.0507, 41.1900, -1.6267

Achromatopsia

50.8117, -2.7112, 2.7607

Achromatomaly

49.7667, 12.0930, 0.3894

CSS Examples

Text

The CSS property to change the color of the text to HunterLab 50.0507, 41.1900, -1.6267 is called "color". The color property can be set on classes, ids or directly on the HTML element.

This example shows how text in the color `rgb(208, 102, 148)` looks like.

```
.text, #text, p{  
    color:rgb(208, 102, 148)  
}
```

If you want to add a text shadow in that color use the text-shadow property, you can generate a text shadow directly with our [CSS Text Shadow Generator](#).

Here you see how black text with a 4 pixel rgb(208, 102, 148) colored shadow looks like.

```
.shadow{ text-shadow: 4px 4px 2px rgb(208, 102, 148) }
```

Border

The CSS property to change the border of an element to HunterLab 50.0507, 41.1900, -1.6267 is called "border". The border property can be set on classes, ids or directly on the HTML element.

This example shows the color as border, it can be applied via the CSS property "border" or "border-color".

```
.border, #border, table{ border:4px solid rgb(208, 102, 148) }
```


If only the border color should be changed use the property `border-color`.

```
.border{ border-color:rgb(208, 102, 148) }
```

If you want to add a box shadow in that color use:

Here you see how a box with a 4 pixel `rgb(208, 102, 148)` colored shadow looks like.

```
.boxshadow{ -moz-box-shadow:4px 4px 4px  
4px rgb(208, 102, 148); -webkit-box-  
shadow:4px 4px 4px 4px rgb(208, 102, 148);  
box-shadow:4px 4px 4px 4px rgb(208, 102,  
148) }
```

Background

The CSS property to change the background color of an element to HunterLab 50.0507, 41.1900, -1.6267 is called "background". The background property can be set on classes, ids or directly on the HTML element.

```
.background, #background, body{  
background: rgb(208, 102, 148) }
```

If only the background color should be changed can be used:

```
.background{ background-color: rgb(208,  
102, 148) }
```

This example shows the color as background, it is applied via the CSS property "background".

To optimize and compress your CSS code, you can use our [online CSS compressor and optimizer](#) based on csstidy. If you want to create a linear or radial gradient as background or border, check our [CSS Gradient Generator](#).

Hey! You found this booklet interesting? Support Converting Colors with the new Membership Option!

The pro membership hides all ads, plus gives you double the colors in the color bucket, and more awesome pro features!

[Learn more, Memberships starting at \\$2.50/m!](#)

**Follow me
on Twitter!**

@ConvertingColor