

Converting Colors

HunterLab(50.0017, 63.9306,
11.9988)

Have a look what the booklet for
HunterLab(50.0017, 63.9306,
11.9988) contains.

HunterLab(50.1040, 63.9260, 12.0779)	3
<i>Conversions</i>	4
<i>Details</i>	6
<i>Harmonies</i>	12
<i>Previews</i>	24
<i>Color Blindness Simulation</i>	28
<i>CSS Examples</i>	31

Color

**HunterLab(50.1040, 63.9260,
12.0779)**

Conversions

Conversions Part 1

Format	Color
Hex	F34975
RGB	243, 73, 117
RGB Percent	95%, 29%, 46%
CMY	0.0471, 0.7137, 0.5412
CMYK	0.00, 0.70, 0.52, 0.05
HSL	344°, 88%, 62%
HSV	344°, 70%, 95%
XYZ	42.5556, 25.1041, 19.4322
YIQ	128.8460, 87.1960, 49.7240

Conversions

Conversions Part 2

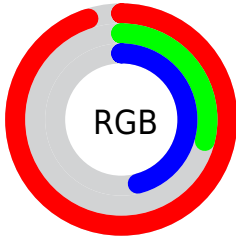
Format	Color
R_{YB}	243, 73, 117
Decimal	15944053
CIE _{Lab}	57.18, 67.09, 13.57
CIE _{LCh}	57, 68.447, 11.431
Yxy	25.1055, 0.4886, 0.2883
Android (android.graphics.Color)	4294134133 (0xFFFF34975)
YUV	128.8460, -5.8401, 100.1131
Hunter-Lab	50.1040, 63.9260, 12.0779

Details

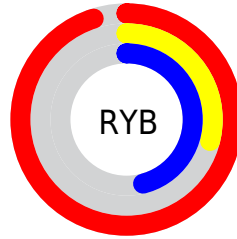
The HunterLab color **50.1040, 63.9260, 12.0779** is a dark color, and the websafe version is hex **FF3366**. The color can be described as middle washed rose. A complement of this color would be **83.4517, -49.5541, 12.1618**, and the grayscale version is **46.7933, -2.4968, 2.5424**.

A 20% lighter version of the original color is **63.7394, 47.1100, 5.1848**, and **32.0210, 56.1787, 10.2898** is the 20% darker color. If you saturate the color by 10%, you get **47.0402, 70.6027, 15.3472**, and if you desaturate by 10%, it is **54.2321, 55.3121, 9.3216**.

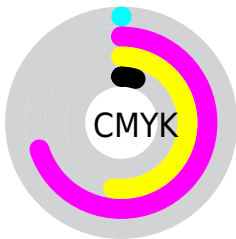
Distribution



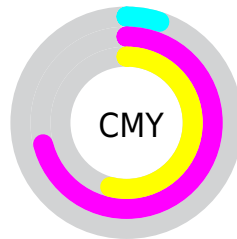
- Red (95%)
- Green (29%)
- Blue (46%)



- Red (95%)
- Yellow (29%)
- Blue (46%)



- Cyan (0%)
- Magenta (70%)
- Yellow (52%)
- Black (5%)



- Cyan (5%)
- Magenta (71%)
- Yellow (54%)

Brightness & Saturation Gradients

These gradients show how the HunterLab color 50.1040, 63.9260, 12.0779 changes by changing the brightness by 10 percent. The first figure shows a shift by +10% for each color and the second figure -10%.

Similar to the brightness gradients but the following saturation gradients show a change of the HunterLab color 50.1040, 63.9260, 12.0779 by changing the saturation by 10% instead.

50.1040, 63.9260,
12.0779

50.1040, 63.9260,
12.0779

166.8422, 80.0597,
23.9222

40.1942, 61.6898,
10.7249

71.9919, 68.1562,
14.7255

31.0393, 59.4363,
9.3325

83.8869, 70.1328,
16.0341

22.7095, 57.2773,
7.8787

96.3733, 72.0125,
17.3398

15.2964, 55.5203,
6.3235

109.4242, 73.7972,
18.6462

8.9144, 55.3058,
6.2401

123.0162, 75.4904,
19.9558

0.0000, INF, NaN

0.0000, INF, NaN

137.1286, 77.0959,

21.2708

0.0000, NaN, NaN

151.7428, 78.6176,
22.5925

0.0000, NaN, NaN

■ 50.1040, 63.9260,
12.0779

■ 50.1040, 63.9260,
12.0779

■ 47.0402, 70.6027,
15.3472

■ 54.2321, 55.3121,
9.3216

■ 45.0763, 74.6896,
18.8500

■ 59.3119, 45.5530,
7.2091

■ 44.0631, 76.2588,
22.1656


■ 65.2124, 35.2786,
5.7560


■ 44.0593, 76.2644,
22.1791

■ 71.8049, 24.9045,
4.9066

■ 78.9771, 14.6605,
4.5774

 86.6367, 4.6503,
4.6828

 94.7091, -5.0955,
5.1465

 98.8912, -9.2147,
4.0531

Harmonies

Analogous

The Analogous color harmony consists of three colors that are next to each other on the color wheel.



50.1054, 61.3140, -17.0999



50.1040, 63.9260, 12.0779



50.1054, 45.9321, 26.5538

Triad

The Triadic color harmony groups three colors that are evenly spaced from another and form a triangle on the color wheel.



50.1054, 63.9215, 12.0791



50.1054, -34.2891, 28.3198



50.1054, -19.1095, -77.2378

Complementary

The Complementary color scheme is a pair of colors which are on the opposite of each other on the color wheel.



50.1040, 63.9260, 12.0779



83.4517, -49.5541, 12.1618

Split Complementary

Split-complementary colors differ from the complementary color scheme. The scheme consists of three colors, the original color and two neighbors of the complement color.



50.1054, -37.7834, -46.1093



50.1040, 63.9260, 12.0779



50.1054, -45.0844, 16.7623

Square

The Square scheme is like the rectangle color scheme, but the four colors are evenly spaced on the color wheel.



50.1054, 63.9215, 12.0791



50.1054, -13.1789, 31.7526



50.1054, -46.1996, -8.8678



50.1054, 8.7699, -81.1726

Rectangle

The Rectangle color scheme consists of four colors that form a rectangle on the color wheel.



50.1040, 63.9260, 12.0779



50.1054, 26.6299, 30.4317



50.1054, -46.1996, -8.8678



50.1054, -26.4896, -69.0327

Sweetspot

The Sweet Spot groups the original color and five complimentary colors.



50.1054, 63.9215, 12.0791



82.5624, 16.6648, 4.8493



48.1648, 70.4846, -73.4667



37.2087, 9.0891, 2.2717

0.0000, NaN, NaN



46.2646, -2.4686, 2.5136

Same Dimension

The Same Dimension uses a secret algorithm to generate beautiful new colors.



50.1054, 63.9215, 12.0791



48.6630, 76.7784, 17.7792



55.9229, 42.6866, 28.5218



40.6853, 1.9602, 2.1964



32.6691, 56.6044, 16.0129



9.7680, 17.0863, 3.5346

Inverse Universe

The Inverse Universe completely reimagines the original color for something new.



50.1054, 63.9215, 12.0791



48.6630, 76.7784, 17.7792



71.2450, -23.5558, -27.0767



40.6853, 1.9602, 2.1964



32.6691, 56.6044, 16.0129



9.7680, 17.0863, 3.5346

Previews

White Background



This preview shows how the HunterLab color 50.1040, 63.9260, 12.0779 looks on a white background.

Color Contrast Check

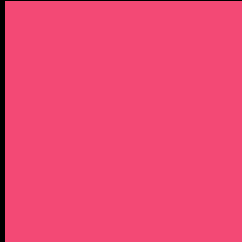
Large Text (above 18pt) WCAG AA ✓ Pass

Any Text WCAG AA × Fail

Large Text (above 18pt) WCAG AAA × Fail

Any Text WCAG AAA × Fail

Black Background



This preview shows how the HunterLab color 50.1040, 63.9260, 12.0779 looks on a black background.

Color Contrast Check

Large Text (above 18pt) WCAG AA ✓ Pass

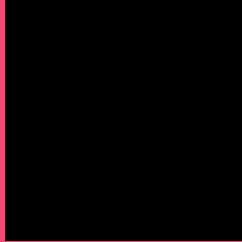
Any Text WCAG AA ✓ Pass

Large Text (above 18pt) WCAG AAA ✓ Pass

Any Text WCAG AAA × Fail

If you want to check with other color combinations, try the [Color Contrast Checker](#).

HunterLab 50.1040, 63.9260, 12.0779 Background



This preview shows how black text looks on a background with the HunterLab color 50.1040, 63.9260, 12.0779.

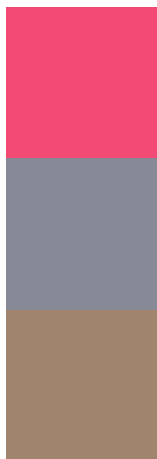


This preview shows how white text looks on a background with the HunterLab color 50.1040, 63.9260,

Color Blindness Simulation

Color vision deficiency is a very complex topic, and I could not describe the different causes any better than Wikipedia does, so if you want to learn more, you should check out their [article about color blindness](#).

Dichromacy



Original Color

50.1040, 63.9260, 12.0779

Protanopia

50.3265, -0.8049, -2.9964

Deuteranopia

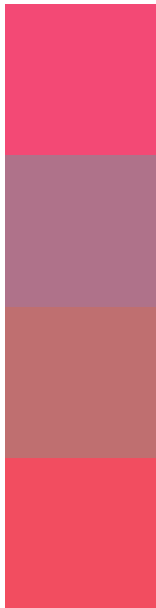
50.1834, 3.6267, 13.8928



Tritanopia

50.0781, 57.5943, 21.9358

Trichromacy



Original Color

50.1040, 63.9260, 12.0779

Protanomaly

47.9412, 21.4129, 0.1793

Deuteranomaly

48.5954, 25.5025, 11.6879

Tritanomaly

50.0295, 60.0990, 18.7654

Monochromacy



Original Color

50.1040, 63.9260, 12.0779

Achromatopsia

46.8536, -2.5000, 2.5456

Achromatomaly

45.7865, 20.2526, 3.4438

CSS Examples

Text

The CSS property to change the color of the text to HunterLab 50.1040, 63.9260, 12.0779 is called "color". The color property can be set on classes, ids or directly on the HTML element.

This example shows how text in the color `rgb(243, 73, 117)` looks like.

```
.text, #text, p{  
    color:rgb(243, 73, 117)  
}
```

If you want to add a text shadow in that color use the text-shadow property, you can generate a text shadow directly with our [CSS Text Shadow Generator](#).

Here you see how black text with a 4 pixel rgb(243, 73, 117) colored shadow looks like.

```
.shadow{ text-shadow: 4px 4px 2px rgb(243, 73, 117) }
```

Border

The CSS property to change the border of an element to HunterLab 50.1040, 63.9260, 12.0779 is called "border". The border property can be set on classes, ids or directly on the HTML element.

This example shows the color as border, it can be applied via the CSS property "border" or "border-color".

```
.border, #border, table{ border:4px solid rgb(243, 73, 117) }
```


If only the border color should be changed use the property border-color.

```
.border{ border-color:rgb(243, 73, 117) }
```

If you want to add a box shadow in that color use:

Here you see how a box with a 4 pixel rgb(243, 73, 117) colored shadow looks like.

```
.boxshadow{ -moz-box-shadow:4px 4px 4px  
4px rgb(243, 73, 117); -webkit-box-  
shadow:4px 4px 4px 4px rgb(243, 73, 117);  
box-shadow:4px 4px 4px 4px rgb(243, 73,  
117) }
```

Background

The CSS property to change the background color of an element to HunterLab 50.1040, 63.9260, 12.0779 is called "background". The background property can be set on classes, ids or directly on the HTML element.

```
.background, #background, body{  
background: rgb(243, 73, 117) }
```

If only the background color should be changed can be used:

```
.background{ background-color: rgb(243, 73,  
117) }
```

This example shows the color as background, it is applied via the CSS property "background".

To optimize and compress your CSS code, you can use our [online CSS compressor and optimizer](#) based on csstidy. If you want to create a linear or radial gradient as background or border, check our [CSS Gradient Generator](#).

Hey! You found this booklet interesting? Support Converting Colors with the new Membership Option!

The pro membership hides all ads, plus gives you double the colors in the color bucket, and more awesome pro features!

[Learn more, Memberships starting at \\$2.50/m!](#)

**Follow me
on Twitter!**

@ConvertingColor