

Converting Colors

HunterLab(50.0558, 76.4187,
10.0160)

Have a look what the booklet for
HunterLab(50.0558, 76.4187,
10.0160) contains.

HunterLab(50.0577, 76.4262, 9.9883)	3
<i>Conversions</i>	4
<i>Details</i>	6
<i>Harmonies</i>	12
<i>Previews</i>	24
<i>Color Blindness Simulation</i>	28
<i>CSS Examples</i>	31

Color

**HunterLab(50.0577, 76.4262,
9.9883)**

Conversions

Conversions Part 1

Format	Color
Hex	FF337B
RGB	255, 51, 123
RGB Percent	100%, 20%, 48%
CMY	0.0000, 0.7999, 0.5176
CMYK	0.00, 0.80, 0.52, 0.00
HSL	339°, 100%, 60%
HSV	339°, 80%, 100%
XYZ	45.9990, 25.0577, 21.1511
YIQ	120.2040, 98.4720, 65.6400

Conversions

Conversions Part 2

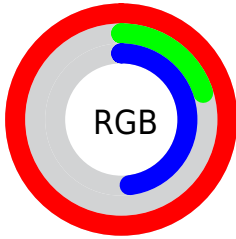
Format	Color
R_{YB}	255, 51, 123
Decimal	16724859
CIE _{Lab}	57.13, 77.33, 10.26
CIE _{LCh}	57, 78.011, 7.558
Yxy	25.0592, 0.4989, 0.2718
Android (android.graphics.Color)	4294914939 (0xFFFF337B)
YUV	120.2040, 1.3784, 118.2161
Hunter-Lab	50.0577, 76.4262, 9.9883

Details

The HunterLab color **50.0577, 76.4262, 9.9883** is a dark color, and the websafe version is hex **FF0066**. The color can be described as middle washed rose. A complement of this color would be **86.9734, -58.4621, 22.0227**, and the grayscale version is **43.3889, -2.3151, 2.3574**.

A 20% lighter version of the original color is **61.0836, 55.1596, -0.7615**, and **34.2264, 60.0980, 10.6111** is the 20% darker color. If you saturate the color by 10%, you get **47.9881, 80.5280, 13.9641**, and if you desaturate by 10%, it is **53.2721, 69.4749, 6.6425**.

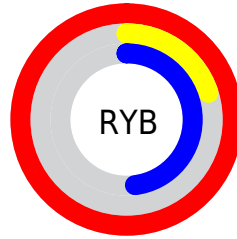
Distribution



Red (100%)

Green (20%)

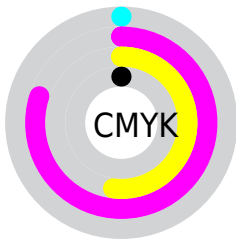
Blue (48%)



Red (100%)

Yellow (20%)

Blue (48%)

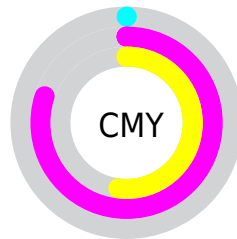


Cyan (0%)

Magenta (80%)

Yellow (52%)

Black (0%)



Cyan (0%)

Magenta (80%)

Yellow (52%)

Brightness & Saturation Gradients

These gradients show how the HunterLab color 50.0577, 76.4262, 9.9883 changes by changing the brightness by 10 percent. The first figure shows a shift by +10% for each color and the second figure -10%.

Similar to the brightness gradients but the following saturation gradients show a change of the HunterLab color 50.0577, 76.4262, 9.9883 by changing the saturation by 10% instead.

50.0577, 76.4262,
9.9883

50.0577, 76.4262,
9.9883

166.7731, 95.0914,
20.4362

40.1512, 73.9991,
8.8464

71.9397, 81.1562,
12.2621

30.9999, 71.6380,
7.6869

83.8320, 83.4120,
13.4017

22.6740, 69.5283,
6.4955

96.3157, 85.5797,
14.5481

15.2653, 68.1514,
5.2445

109.3642, 87.6570,
15.7031

8.8864, 69.2097,
5.2700

122.9538, 89.6443,
16.8685

0.0000, INF, NaN

0.0000, INF, NaN

137.0639, 91.5439,

18.0453

0.0000, NaN, NaN

151.6758, 93.3586,
19.2343

0.0000, NaN, NaN

■ 50.0577, 76.4262,
9.9883

■ 50.0577, 76.4262,
9.9883

■ 47.9881, 80.5280,
13.9641

■ 53.2721, 69.4749,
6.6425

■ 46.9025, 81.8936,
18.1078

■ 57.5904, 60.3709,
4.1617

■ 46.9019, 81.8943,
18.1105

■ 62.9052, 49.9316,
2.6095

■ 69.0815, 38.8442,
1.9246

■ 75.9864, 27.5714,
1.9877

■ 83.5035, 16.3780,
2.6687

■ 91.5360, 5.3914,
3.8501

100.0000, -5.3359,
5.4331

Harmonies

Analogous

The Analogous color harmony consists of three colors that are next to each other on the color wheel.



50.0592, 69.9519, -26.0070



50.0577, 76.4262, 9.9883



50.0592, 57.7593, 27.2320

Triad

The Triadic color harmony groups three colors that are evenly spaced from another and form a triangle on the color wheel.



50.0592, 76.4211, 9.9896



50.0592, -35.6027, 30.7661



50.0592, -24.5421, -90.4589

Complementary

The Complementary color scheme is a pair of colors which are on the opposite of each other on the color wheel.



50.0577, 76.4262, 9.9883



86.9734, -58.4621, 22.0227

Split Complementary

Split-complementary colors differ from the complementary color scheme. The scheme consists of three colors, the original color and two neighbors of the complement color.



50.0592, -43.4941, -49.3601



50.0577, 76.4262, 9.9883



50.0592, -48.6386, 20.6405

Square

The Square scheme is like the rectangle color scheme, but the four colors are evenly spaced on the color wheel.



50.0592, 76.4211, 9.9896



50.0592, -10.7001, 33.1729



50.0592, -51.0997, -5.8239



50.0592, 5.8926, -100.6593

Rectangle

The Rectangle color scheme consists of four colors that form a rectangle on the color wheel.



50.0577, 76.4262, 9.9883



50.0592, 35.8408, 31.5149



50.0592, -51.0997, -5.8239



50.0592, -32.2071, -78.9266

Sweetspot

The Sweet Spot groups the original color and five complimentary colors.



50.0592, 76.4211, 9.9896



80.4247, 20.8431, 2.3296



43.9514, 77.8411, -99.1792



35.9758, 11.4910, 0.9721

0.0000, NaN, NaN



46.2646, -2.4686, 2.5136

Same Dimension

The Same Dimension uses a secret algorithm to generate beautiful new colors.



50.0592, 76.4211, 9.9896



47.2618, 81.5431, 16.4889



51.9408, 62.2986, 29.5189



42.5358, 2.2489, 1.8130



33.9411, 59.3365, 12.5418



10.6840, 18.8570, 2.5606

Inverse Universe

The Inverse Universe completely reimagines the original color for something new.



50.0592, 76.4211, 9.9896



47.2618, 81.5431, 16.4889



79.5627, -33.5538, -22.0626



42.5358, 2.2489, 1.8130



33.9411, 59.3365, 12.5418



10.6840, 18.8570, 2.5606

Previews

White Background



This preview shows how the HunterLab color 50.0577, 76.4262, 9.9883 looks on a white background.

Color Contrast Check

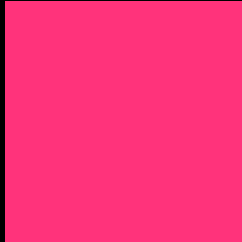
Large Text (above 18pt) WCAG AA ✓ Pass

Any Text WCAG AA × Fail

Large Text (above 18pt) WCAG AAA × Fail

Any Text WCAG AAA × Fail

Black Background



This preview shows how the HunterLab color 50.0577, 76.4262, 9.9883 looks on a black background.

Color Contrast Check

Large Text (above 18pt) WCAG AA ✓ Pass

Any Text WCAG AA ✓ Pass

Large Text (above 18pt) WCAG AAA ✓ Pass

Any Text WCAG AAA × Fail

If you want to check with other color combinations, try the [Color Contrast Checker](#).

HunterLab 50.0577, 76.4262, 9.9883 Background



This preview shows how black text looks on a background with the HunterLab color 50.0577, 76.4262, 9.9883.



This preview shows how white text looks on a background with the HunterLab color 50.0577, 76.4262, 9.9883.

Color Blindness Simulation

Color vision deficiency is a very complex topic, and I could not describe the different causes any better than Wikipedia does, so if you want to learn more, you should check out their [article about color blindness](#).

Dichromacy



Original Color

50.0577, 76.4262, 9.9883

Protanopia

50.1810, 1.3888, -12.8249

Deuteranopia

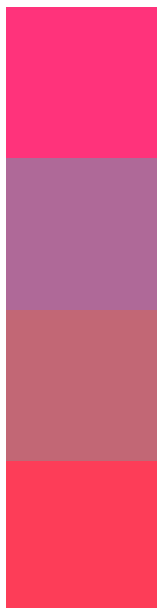
50.0657, 3.4075, 12.4087



Tritanopia

50.0092, 66.4527, 25.4951

Trichromacy



Original Color

50.0577, 76.4262, 9.9883

Protanomaly

46.3510, 28.2491, -8.9425

Deuteranomaly

47.3858, 31.2482, 8.6885

Tritanomaly

49.9247, 69.7280, 21.0196

Monochromacy



Original Color

50.0577, 76.4262, 9.9883

Achromatopsia

43.3383, -2.3124, 2.3547

Achromatomaly

42.4263, 26.3318, 1.3246

CSS Examples

Text

The CSS property to change the color of the text to HunterLab 50.0577, 76.4262, 9.9883 is called "color". The color property can be set on classes, ids or directly on the HTML element.

This example shows how text in the color `rgb(255, 51, 123)` looks like.

```
.text, #text, p{  
    color:rgb(255, 51, 123)  
}
```

If you want to add a text shadow in that color use the text-shadow property, you can generate a text shadow directly with our [CSS Text Shadow Generator](#).

Here you see how black text with a 4 pixel rgb(255, 51, 123) colored shadow looks like.

```
.shadow{ text-shadow: 4px 4px 2px rgb(255, 51, 123) }
```

Border

The CSS property to change the border of an element to HunterLab 50.0577, 76.4262, 9.9883 is called "border". The border property can be set on classes, ids or directly on the HTML element.

This example shows the color as border, it can be applied via the CSS property "border" or "border-color".

```
.border, #border, table{ border:4px solid rgb(255, 51, 123) }
```


If only the border color should be changed use the property `border-color`.

```
.border{ border-color:rgb(255, 51, 123) }
```

If you want to add a box shadow in that color use:

Here you see how a box with a 4 pixel `rgb(255, 51, 123)` colored shadow looks like.

```
.boxshadow{ -moz-box-shadow:4px 4px 4px  
4px rgb(255, 51, 123); -webkit-box-  
shadow:4px 4px 4px 4px rgb(255, 51, 123);  
box-shadow:4px 4px 4px 4px rgb(255, 51,  
123) }
```

Background

The CSS property to change the background color of an element to HunterLab 50.0577, 76.4262, 9.9883 is called "background". The background property can be set on classes, ids or directly on the HTML element.

```
.background, #background, body{  
background: rgb(255, 51, 123) }
```

If only the background color should be changed can be used:

```
.background{ background-color: rgb(255, 51,  
123) }
```

This example shows the color as background, it is applied via the CSS property "background".

To optimize and compress your CSS code, you can use our [online CSS compressor and optimizer](#) based on csstidy. If you want to create a linear or radial gradient as background or border, check our [CSS Gradient Generator](#).

Hey! You found this booklet interesting? Support Converting Colors with the new Membership Option!

The pro membership hides all ads, plus gives you double the colors in the color bucket, and more awesome pro features!

[Learn more, Memberships starting at \\$2.50/m!](#)

**Follow me
on Twitter!**

@ConvertingColor