

Converting Colors

HunterLab(50.1194, 63.7363,
11.8574)

Have a look what the booklet for
HunterLab(50.1194, 63.7363,
11.8574) contains.

HunterLab(50.1276, 64.0239, 11.7369)	3
<i>Conversions</i>	4
<i>Details</i>	6
<i>Harmonies</i>	12
<i>Previews</i>	24
<i>Color Blindness Simulation</i>	28
<i>CSS Examples</i>	31

Color

**HunterLab(50.1276, 64.0239,
11.7369)**

Conversions

Conversions Part 1

Format	Color
Hex	F34976
RGB	243, 73, 118
RGB Percent	95%, 29%, 46%
CMY	0.0471, 0.7137, 0.5373
CMYK	0.00, 0.70, 0.51, 0.05
HSL	344°, 88%, 62%
HSV	344°, 70%, 95%
XYZ	42.6147, 25.1278, 19.7436
YIQ	128.9600, 86.8750, 50.0350

Conversions

Conversions Part 2

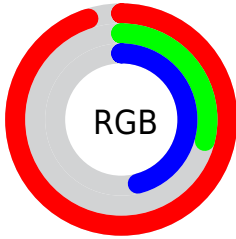
Format	Color
R_{YB}	243, 73, 118
Decimal	15944054
CIE _{Lab}	57.20, 67.17, 13.01
CIE _{LCh}	57, 68.415, 10.959
Yxy	25.1292, 0.4871, 0.2872
Android (android.graphics.Color)	4294134134 (0xFFFF34976)
YUV	128.9600, -5.4033, 100.0131
Hunter-Lab	50.1276, 64.0239, 11.7369

Details

The HunterLab color **50.1276, 64.0239, 11.7369** is a dark color, and the websafe version is hex **CC3366**. The color can be described as middle washed rose. A complement of this color would be **83.4239, -49.7212, 12.5603**, and the grayscale version is **46.8365, -2.4991, 2.5447**.

A 20% lighter version of the original color is **63.7690, 47.2486, 4.7622**, and **32.0405, 56.2505, 10.0057** is the 20% darker color. If you saturate the color by 10%, you get **47.0636, 70.6945, 15.0071**, and if you desaturate by 10%, it is **54.2545, 55.4106, 9.0002**.

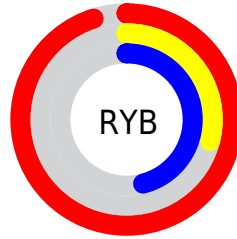
Distribution



Red (95%)

Green (29%)

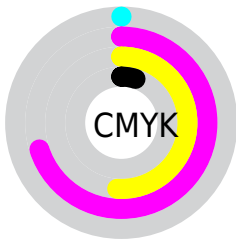
Blue (46%)



Red (95%)

Yellow (29%)

Blue (46%)

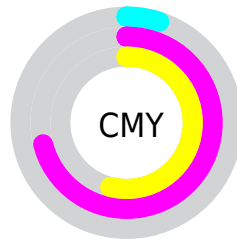


Cyan (0%)

Magenta (70%)

Yellow (51%)

Black (5%)



Cyan (5%)

Magenta (71%)

Yellow (54%)

Brightness & Saturation Gradients

These gradients show how the HunterLab color 50.1276, 64.0239, 11.7369 changes by changing the brightness by 10 percent. The first figure shows a shift by +10% for each color and the second figure -10%.

Similar to the brightness gradients but the following saturation gradients show a change of the HunterLab color 50.1276, 64.0239, 11.7369 by changing the saturation by 10% instead.

■ 50.1276, 64.0239,
11.7369

■ 50.1276, 64.0239,
11.7369

166.8774, 80.1760,
23.3427

■ 40.2161, 61.7861,
10.4202

■ 72.0186, 68.2578,
14.3205

■ 31.0594, 59.5313,
9.0678

■ 83.9150, 70.2365,
15.6001

■ 22.7277, 57.3717,
7.6592

■ 96.4026, 72.1183,
16.8786

■ 15.3123, 55.6151,
6.1566

■ 109.4548, 73.9051,
18.1592

■ 8.9286, 55.3931,
6.2500

■ 123.0480, 75.6004,
19.4442

0.0000, INF, NaN

0.0000, INF, NaN

137.1616, 77.2080,

20.7356

0.0000, NaN, NaN

151.7769, 78.7319,
22.0347

0.0000, NaN, NaN

■ 50.1276, 64.0239,
11.7369

■ 50.1276, 64.0239,
11.7369

■ 47.0636, 70.6945,
15.0071

■ 54.2545, 55.4106,
9.0002

■ 45.0979, 74.7710,
18.5342

■ 59.3319, 45.6460,
6.9231

■ 44.0814, 76.3266,
21.8956

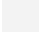
■ 65.2292, 35.3603,
5.5167


■ 44.0776, 76.3321,
21.9093

■ 71.8179, 24.9704,
4.7214

■ 78.9860, 14.7068,
4.4512

 86.6412, 4.6744,
4.6188

 94.7091, -5.0956,
5.1468

 98.8912, -9.2147,
4.0531

Harmonies

Analogous

The Analogous color harmony consists of three colors that are next to each other on the color wheel.



50.1290, 61.0702, -17.6558



50.1276, 64.0239, 11.7369



50.1290, 46.3157, 26.4204

Triad

The Triadic color harmony groups three colors that are evenly spaced from another and form a triangle on the color wheel.



50.1290, 64.0194, 11.7381



50.1290, -34.0326, 28.4223



50.1290, -19.4794, -76.8652

Complementary

The Complementary color scheme is a pair of colors which are on the opposite of each other on the color wheel.



50.1276, 64.0239, 11.7369



83.4239, -49.7212, 12.5603

Split Complementary

Split-complementary colors differ from the complementary color scheme. The scheme consists of three colors, the original color and two neighbors of the complement color.



50.1290, -37.9885, -45.4806



50.1276, 64.0239, 11.7369



50.1290, -44.9871, 17.0405

Square

The Square scheme is like the rectangle color scheme, but the four colors are evenly spaced on the color wheel.



50.1290, 64.0194, 11.7381



50.1290, -12.7674, 31.7772



50.1290, -46.2499, -8.3429



50.1290, 8.2796, -81.3138

Rectangle

The Rectangle color scheme consists of four colors that form a rectangle on the color wheel.



50.1276, 64.0239, 11.7369



50.1290, 27.1040, 30.3786



50.1290, -46.2499, -8.3429



50.1290, -26.8055, -68.5325

Sweetspot

The Sweet Spot groups the original color and five complimentary colors.



50.1290, 64.0194, 11.7381



82.5723, 16.7162, 4.7089



48.1648, 70.4846, -73.4667



37.2139, 9.1156, 2.1987

0.0000, NaN, NaN



46.2646, -2.4686, 2.5136

Same Dimension

The Same Dimension uses a secret algorithm to generate beautiful new colors.



50.1290, 64.0194, 11.7381



48.6871, 76.8711, 17.4279



55.9229, 42.6866, 28.5218



40.6873, 1.9710, 2.1679



32.6832, 56.6563, 15.8062



9.7732, 17.1052, 3.4600

Inverse Universe

The Inverse Universe completely reimagines the original color for something new.



50.1290, 64.0194, 11.7381



48.6871, 76.8711, 17.4279



71.2450, -23.5558, -27.0767



40.6873, 1.9710, 2.1679



32.6832, 56.6563, 15.8062



9.7732, 17.1052, 3.4600

Previews

White Background



This preview shows how the HunterLab color 50.1276, 64.0239, 11.7369 looks on a white background.

Color Contrast Check

Large Text (above 18pt) WCAG AA ✓ Pass

Any Text WCAG AA × Fail

Large Text (above 18pt) WCAG AAA × Fail

Any Text WCAG AAA × Fail

Black Background



This preview shows how the HunterLab color 50.1276, 64.0239, 11.7369 looks on a black background.

Color Contrast Check

Large Text (above 18pt) WCAG AA ✓ Pass

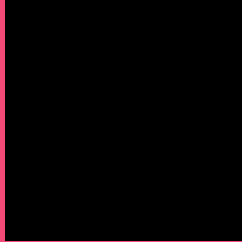
Any Text WCAG AA ✓ Pass

Large Text (above 18pt) WCAG AAA ✓ Pass

Any Text WCAG AAA × Fail

If you want to check with other color combinations, try the [Color Contrast Checker](#).

HunterLab 50.1276, 64.0239, 11.7369 Background



This preview shows how black text looks on a background with the HunterLab color 50.1276, 64.0239, 11.7369.

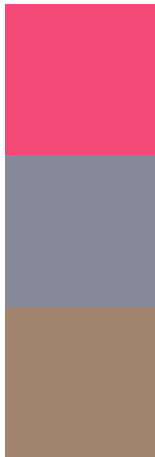


This preview shows how white text looks on a background with the HunterLab color 50.1276, 64.0239,

Color Blindness Simulation

Color vision deficiency is a very complex topic, and I could not describe the different causes any better than Wikipedia does, so if you want to learn more, you should check out their [article about color blindness](#).

Dichromacy



Original Color

50.1276, 64.0239, 11.7369

Protanopia

50.3910, -0.4540, -3.9090

Deuteranopia

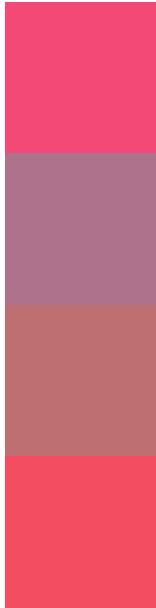
50.1018, 3.3961, 13.4747



Tritanopia

50.0781, 57.5943, 21.9358

Trichromacy



Original Color

50.1276, 64.0239, 11.7369

Protanomaly

48.0021, 21.7162, -0.6865

Deuteranomaly

48.4853, 25.2293, 11.2139

Tritanomaly

50.0295, 60.0990, 18.7654

Monochromacy



Original Color

50.1276, 64.0239, 11.7369

Achromatopsia

46.8536, -2.5000, 2.5456

Achromatomaly

45.7865, 20.2526, 3.4438

CSS Examples

Text

The CSS property to change the color of the text to HunterLab 50.1276, 64.0239, 11.7369 is called "color". The color property can be set on classes, ids or directly on the HTML element.

This example shows how text in the color `rgb(243, 73, 118)` looks like.

```
.text, #text, p{  
    color:rgb(243, 73, 118)  
}
```

If you want to add a text shadow in that color use the text-shadow property, you can generate a text shadow directly with our [CSS Text Shadow Generator](#).

Here you see how black text with a 4 pixel rgb(243, 73, 118) colored shadow looks like.

```
.shadow{ text-shadow: 4px 4px 2px rgb(243, 73, 118) }
```

Border

The CSS property to change the border of an element to HunterLab 50.1276, 64.0239, 11.7369 is called "border". The border property can be set on classes, ids or directly on the HTML element.

This example shows the color as border, it can be applied via the CSS property "border" or "border-color".

```
.border, #border, table{ border:4px solid rgb(243, 73, 118) }
```


If only the border color should be changed use the property `border-color`.

```
.border{ border-color:rgb(243, 73, 118) }
```

If you want to add a box shadow in that color use:

Here you see how a box with a 4 pixel `rgb(243, 73, 118)` colored shadow looks like.

```
.boxshadow{ -moz-box-shadow:4px 4px 4px  
4px rgb(243, 73, 118); -webkit-box-  
shadow:4px 4px 4px 4px rgb(243, 73, 118);  
box-shadow:4px 4px 4px 4px rgb(243, 73,  
118) }
```

Background

The CSS property to change the background color of an element to HunterLab 50.1276, 64.0239, 11.7369 is called "background". The background property can be set on classes, ids or directly on the HTML element.

```
.background, #background, body{  
background: rgb(243, 73, 118) }
```

If only the background color should be changed can be used:

```
.background{ background-color: rgb(243, 73,  
118) }
```

This example shows the color as background, it is applied via the CSS property "background".

To optimize and compress your CSS code, you can use our [online CSS compressor and optimizer](#) based on csstidy. If you want to create a linear or radial gradient as background or border, check our [CSS Gradient Generator](#).

Hey! You found this booklet interesting? Support Converting Colors with the new Membership Option!

The pro membership hides all ads, plus gives you double the colors in the color bucket, and more awesome pro features!

[Learn more, Memberships starting at \\$2.50/m!](#)

**Follow me
on Twitter!**

@ConvertingColor