

Converting Colors

HunterLab(50.1249, 20.7717,
10.7123)

Have a look what the booklet for
HunterLab(50.1249, 20.7717,
10.7123) contains.

HunterLab(50.0903, 20.7461, 10.5704)	3
<i>Conversions</i>	4
<i>Details</i>	6
<i>Harmonies</i>	12
<i>Previews</i>	24
<i>Color Blindness Simulation</i>	28
<i>CSS Examples</i>	31

Color

**HunterLab(50.0903, 20.7461,
10.5704)**

Conversions

Conversions Part 1

Format	Color
Hex	BB7777
RGB	187, 119, 119
RGB Percent	73%, 47%, 47%
CMY	0.2667, 0.5333, 0.5333
CMYK	0.00, 0.36, 0.36, 0.27
HSL	0°, 33%, 60%
HSV	0°, 36%, 73%
XYZ	30.4201, 25.0904, 20.6924
YIQ	139.3320, 40.5280, 14.4160

Conversions

Conversions Part 2

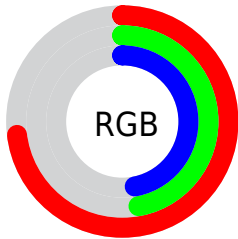
Format	Color
R_{YB}	187, 119, 119
Decimal	12285815
CIE _{Lab}	57.16, 26.65, 11.16
CIE _{LCh}	57, 28.894, 22.717
Yxy	25.0916, 0.3992, 0.3293
Android (android.graphics.Color)	4290475895 (0xFFBB7777)
YUV	139.3320, -10.0237, 41.8048
Hunter-Lab	50.0903, 20.7461, 10.5704

Details

The HunterLab color **50.0903, 20.7461, 10.5704** is a dark color, and the websafe version is hex **996666**. A complement of this color would be **65.6116, -21.3773, -2.4287**, and the grayscale version is **50.9724, -2.7198, 2.7694**.

A 20% lighter version of the original color is **72.0124, 22.1065, 13.0393**, and **31.0108, 19.3002, 8.0492** is the 20% darker color. If you saturate the color by 10%, you get **45.4576, 28.0220, 12.6762**, and if you desaturate by 10%, it is **55.2116, 13.6429, 8.5608**.

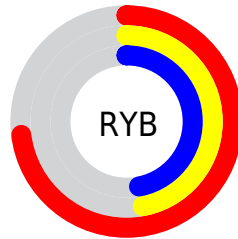
Distribution



Red (73%)

Green (47%)

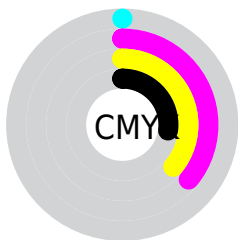
Blue (47%)



Red (73%)

Yellow (47%)

Blue (47%)

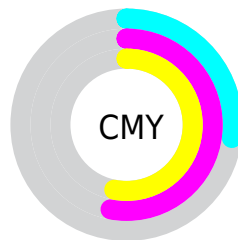


Cyan (0%)

Magenta (36%)

Yellow (36%)

Black (27%)



Cyan (27%)

Magenta (53%)

Yellow (53%)

Brightness & Saturation Gradients

These gradients show how the HunterLab color 50.0903, 20.7461, 10.5704 changes by changing the brightness by 10 percent. The first figure shows a shift by +10% for each color and the second figure -10%.

Similar to the brightness gradients but the following saturation gradients show a change of the HunterLab color 50.0903, 20.7461, 10.5704 by changing the saturation by 10% instead.

■ 50.0903, 20.7461,
10.5704

■ 50.0903, 20.7461,
10.5704

166.8214, 24.5017,
21.3939

■ 40.1812, 19.8979,
9.3715

■ 71.9762, 22.1192,
12.9442

■ 31.0275, 18.9291,
8.1496

■ 83.8704, 22.6703,
14.1293

■ 22.6989, 17.8216,
6.8880

■ 96.3560, 23.1415,
15.3186

■ 15.2871, 16.5630,
5.5555

109.4061, 23.5396,
16.5144

■ 8.9060, 15.2644,
5.6783

122.9974, 23.8701,
17.7186

0.0000, INF, NaN

0.0000, NaN, NaN

137.1091, 24.1379,

18.9327

0.0000, NaN, NaN

151.7227, 24.3473,
20.1575

0.0000, NaN, NaN

■ 50.0903, 20.7461,
10.5704

■ 50.0903, 20.7461,
10.5704

■ 45.4576, 28.0220,
12.6762

■ 55.2116, 13.6429,
8.5608

■ 41.4047, 35.2727,
14.8137

■ 60.7380, 6.8086,
6.6690

■ 38.0361, 42.1265,
16.8674

■ 66.6059, 0.2613,
4.8979

■ 35.4474, 48.0482,
18.6648

■ 72.7639, -6.0136,
3.2389

■ 33.6964, 52.4500,
20.0132

■ 79.1711, -12.0455,
1.6795

■ 32.7530, 54.9757,
20.7912

■ 85.7955, -17.8678,
0.2058

■ 32.5039, 55.6620,
21.0032

■ 92.6111, -23.5132,
-1.1947

■ 94.5012, -25.0278,
-1.5638

Harmonies

Analogous

The Analogous color harmony consists of three colors that are next to each other on the color wheel.



50.0915, 22.6647, -0.1728



50.0903, 20.7461, 10.5704



50.0915, 12.2740, 17.3803

Triad

The Triadic color harmony groups three colors that are evenly spaced from another and form a triangle on the color wheel.



50.0915, 20.7437, 10.5713



50.0915, -19.9393, 14.4056



50.0915, -5.6023, -24.7021

Complementary

The Complementary color scheme is a pair of colors which are on the opposite of each other on the color wheel.



50.0903, 20.7461, 10.5704



65.6116, -21.3773, -2.4287

Split Complementary

Split-complementary colors differ from the complementary color scheme. The scheme consists of three colors, the original color and two neighbors of the complement color.



50.0915, -16.0543, -18.3714



50.0903, 20.7461, 10.5704



50.0915, -23.8040, 5.4624

Square

The Square scheme is like the rectangle color scheme, but the four colors are evenly spaced on the color wheel.



50.0915, 20.7437, 10.5713



50.0915, -11.3809, 19.1979



50.0915, -22.4526, -6.6362



50.0915, 6.6684, -22.4059

Rectangle

The Rectangle color scheme consists of four colors that form a rectangle on the color wheel.



50.0903, 20.7461, 10.5704



50.0915, 4.4548, 19.6420



50.0915, -22.4526, -6.6362



50.0915, -9.4279, -23.4697

Sweetspot

The Sweet Spot groups the original color and five complimentary colors.



50.0915, 20.7437, 10.5713



85.3041, 4.5210, 7.6763



52.2939, 31.5732, -20.5274



39.5307, 2.6821, 3.7540



97.7295, -5.2146, 5.3098



44.2712, -2.3622, 2.4053

Same Dimension

The Same Dimension uses a secret algorithm to generate beautiful new colors.



50.0915, 20.7437, 10.5713



61.8093, 35.8853, 16.4930



58.8892, 3.6837, 18.7799



30.8812, 1.0449, 2.5805



26.9805, 46.2029, 17.4341



5.3402, 9.1433, 3.4507

Inverse Universe

The Inverse Universe completely reimagines the original color for something new.



65.6116, -21.3773, -2.4287



86.7646, -32.5410, -4.6442



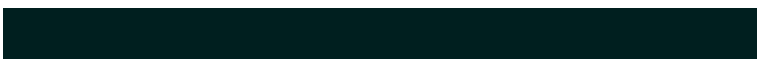
55.0386, -5.6097, -16.8289



32.8778, -4.2833, 0.9384



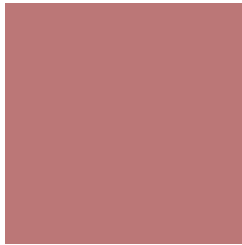
51.9198, -27.5233, -5.4803



10.2759, -5.4475, -1.0844

Previews

White Background



This preview shows how the HunterLab color 50.0903, 20.7461, 10.5704 looks on a white background.

Color Contrast Check

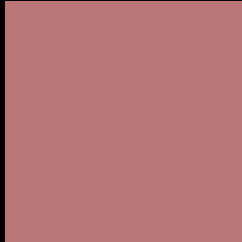
Large Text (above 18pt) WCAG AA ✓ Pass

Any Text WCAG AA × Fail

Large Text (above 18pt) WCAG AAA × Fail

Any Text WCAG AAA × Fail

Black Background



This preview shows how the HunterLab color 50.0903, 20.7461, 10.5704 looks on a black background.

Color Contrast Check

Large Text (above 18pt) WCAG AA ✓ Pass

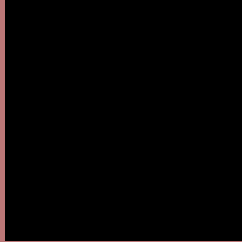
Any Text WCAG AA ✓ Pass

Large Text (above 18pt) WCAG AAA ✓ Pass

Any Text WCAG AAA × Fail

If you want to check with other color combinations, try the [Color Contrast Checker](#).

HunterLab 50.0903, 20.7461, 10.5704 Background



This preview shows how black text looks on a background with the HunterLab color 50.0903, 20.7461, 10.5704.



This preview shows how white text looks on a background with the HunterLab color 50.0903, 20.7461,

Color Blindness Simulation

Color vision deficiency is a very complex topic, and I could not describe the different causes any better than Wikipedia does, so if you want to learn more, you should check out their [article about color blindness](#).

Dichromacy



Original Color

50.0903, 20.7461, 10.5704

Protanopia

50.2002, -2.5218, 6.7691

Deuteranopia

50.0560, 3.5589, 10.9723



Tritanopia

50.1802, 22.6288, 7.5932

Trichromacy



Original Color

50.0903, 20.7461, 10.5704

Protanomaly

49.7142, 5.5812, 7.5922

Deuteranomaly

49.9217, 9.9704, 10.5801

Tritanomaly

50.1034, 22.2462, 8.6978

Monochromacy



Original Color

50.0903, 20.7461, 10.5704

Achromatopsia

50.8117, -2.7112, 2.7607

Achromatomaly

50.2358, 4.9208, 5.2770

CSS Examples

Text

The CSS property to change the color of the text to HunterLab 50.0903, 20.7461, 10.5704 is called "color". The color property can be set on classes, ids or directly on the HTML element.

This example shows how text in the color `rgb(187, 119, 119)` looks like.

```
.text, #text, p{  
    color:rgb(187, 119, 119)  
}
```

If you want to add a text shadow in that color use the text-shadow property, you can generate a text shadow directly with our [CSS Text Shadow Generator](#).

Here you see how black text with a 4 pixel rgb(187, 119, 119) colored shadow looks like.

```
.shadow{ text-shadow: 4px 4px 2px rgb(187, 119, 119) }
```

Border

The CSS property to change the border of an element to HunterLab 50.0903, 20.7461, 10.5704 is called "border". The border property can be set on classes, ids or directly on the HTML element.

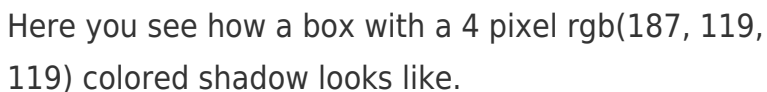
This example shows the color as border, it can be applied via the CSS property "border" or "border-color".

```
.border, #border, table{ border:4px solid rgb(187, 119, 119) }
```


If only the border color should be changed use the property `border-color`.

```
.border{ border-color:rgb(187, 119, 119) }
```

If you want to add a box shadow in that color use:



Here you see how a box with a 4 pixel `rgb(187, 119, 119)` colored shadow looks like.

```
.boxshadow{ -moz-box-shadow:4px 4px 4px 4px rgb(187, 119, 119); -webkit-box-shadow:4px 4px 4px 4px rgb(187, 119, 119); box-shadow:4px 4px 4px 4px rgb(187, 119, 119) }
```

Background

The CSS property to change the background color of an element to HunterLab 50.0903, 20.7461, 10.5704 is called "background". The background property can be set on classes, ids or directly on the HTML element.

```
.background, #background, body{  
background: rgb(187, 119, 119) }
```

If only the background color should be changed can be used:

```
.background{ background-color: rgb(187,  
119, 119) }
```

This example shows the color as background, it is applied via the CSS property "background".

To optimize and compress your CSS code, you can use our [online CSS compressor and optimizer](#) based on csstidy. If you want to create a linear or radial gradient as background or border, check our [CSS Gradient Generator](#).

Hey! You found this booklet interesting? Support Converting Colors with the new Membership Option!

The pro membership hides all ads, plus gives you double the colors in the color bucket, and more awesome pro features!

[Learn more, Memberships starting at \\$2.50/m!](#)

**Follow me
on Twitter!**

@ConvertingColor