

Converting Colors

HunterLab(50.1348, 7.3664,
15.5335)

Have a look what the booklet for
HunterLab(50.1348, 7.3664,
15.5335) contains.

HunterLab(50.1348, 7.3664, 15.5335)	3
<i>Conversions</i>	4
<i>Details</i>	6
<i>Harmonies</i>	12
<i>Previews</i>	24
<i>Color Blindness Simulation</i>	28
<i>CSS Examples</i>	31

Color

**HunterLab(50.1348, 7.3664,
15.5335)**

Conversions

Conversions Part 1

Format	Color
Hex	A98168
RGB	169, 129, 104
RGB Percent	66%, 51%, 41%
CMY	0.3373, 0.4941, 0.5922
CMYK	0.00, 0.24, 0.38, 0.34
HSL	23°, 27%, 54%
HSV	23°, 38%, 66%
XYZ	26.7111, 25.1350, 16.5404
YIQ	138.1100, 31.8650, 0.7050

Conversions

Conversions Part 2

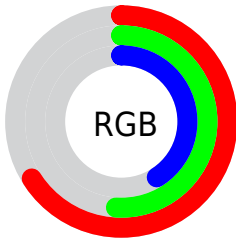
Format	Color
R _Y B	169, 145, 104
Decimal	11108712
CIE Lab	57.21, 11.96, 19.50
CIE LCh	57, 22.879, 58.486
Yxy	25.1362, 0.3906, 0.3675
Android (android.graphics.Color)	4289298792 (0xFFA98168)
YUV	138.1100, -16.8162, 27.0905
Hunter-Lab	50.1348, 7.3664, 15.5335

Details

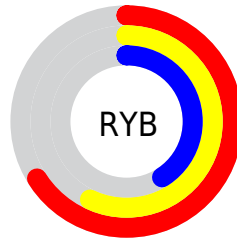
The HunterLab color $50.1348, 7.3664, 15.5335$ is a dark color, and the websafe version is hex 996666 . A complement of this color would be $50.7476, -8.4594, -12.7322$, and the grayscale version is $50.5141, -2.6953, 2.7445$.

A 20% lighter version of the original color is $71.9931, 7.1455, 18.9483$, and $31.1088, 6.8258, 11.9111$ is the 20% darker color. If you saturate the color by 10%, you get $47.1431, 10.7822, 17.8707$, and if you desaturate by 10%, it is $53.2873, 4.2203, 12.8178$.

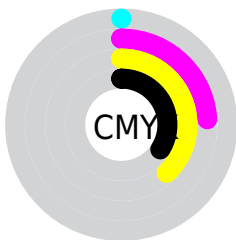
Distribution



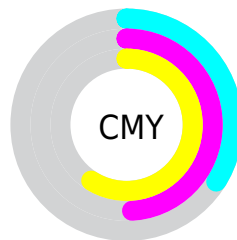
- Red (66%)
- Green (51%)
- Blue (41%)



- Red (66%)
- Yellow (57%)
- Blue (41%)



- Cyan (0%)
- Magenta (24%)
- Yellow (38%)
- Black (34%)



- Cyan (34%)
- Magenta (49%)
- Yellow (59%)

Brightness & Saturation Gradients

These gradients show how the HunterLab color 50.1348, 7.3664, 15.5335 changes by changing the brightness by 10 percent. The first figure shows a shift by +10% for each color and the second figure -10%.

Similar to the brightness gradients but the following saturation gradients show a change of the HunterLab color 50.1348, 7.3664, 15.5335 by changing the saturation by 10% instead.

■ 50.1348, 7.3664,
15.5335

■ 50.1348, 7.3664,
15.5335

166.8878, 5.7731,
29.9703

■ 40.2226, 7.2381,
13.7850

■ 72.0264, 7.3934,
18.8792

■ 31.0654, 7.0230,
11.9557

■ 83.9232, 7.3119,
20.5021

■ 22.7330, 6.7029,
10.0099

■ 96.4113, 7.1740,
22.1040

■ 15.3170, 6.2547,
7.9712

■ 109.4638, 6.9843,
23.6910

■ 8.9328, 5.7102,
6.2530

123.0574, 6.7464,
25.2678

0.0000, NaN, NaN

0.0000, NaN, NaN

137.1713, 6.4635,

26.8381

0.0000, NaN, NaN

151.7870, 6.1383,
28.4048

0.0000, NaN, NaN

■ 50.1348, 7.3664,
15.5335

■ 50.1348, 7.3664,
15.5335

■ 47.1431, 10.7822,
17.8707

■ 53.2873, 4.2203,
12.8178

■ 44.3266, 14.4776,
19.7723

■ 56.5809, 1.3372,
9.7713

■ 41.7063, 18.4392,
21.1821

■ 60.0026, -1.3026,
6.4383

■ 39.3033, 22.6330,
22.0482

■ 63.5401, -3.7191,
2.8560

■ 37.1387, 26.9933,
22.3375

■ 67.1826, -5.9326,
-0.9442

■ 35.2262, 31.3915,
22.1300

■ 70.9210, -7.9626,
-4.9361

■ 34.9524, 32.0505,
22.0986

■ 74.7471, -9.8275,
-9.0976

■ 78.6538, -11.5439,
-13.4105

■ 82.5921, -13.3673,
-17.2567

Harmonies

Analogous

The Analogous color harmony consists of three colors that are next to each other on the color wheel.



50.1360, 14.6423, 10.4185



50.1348, 7.3664, 15.5335



50.1360, -2.1880, 17.3276

Triad

The Triadic color harmony groups three colors that are evenly spaced from another and form a triangle on the color wheel.



50.1360, 7.3643, 15.5342



50.1360, -19.8649, 3.1919



50.1360, 6.4550, -15.3358

Complementary

The Complementary color scheme is a pair of colors which are on the opposite of each other on the color wheel.



50.1348, 7.3664, 15.5335



50.7476, -8.4594, -12.7322

Split Complementary

Split-complementary colors differ from the complementary color scheme. The scheme consists of three colors, the original color and two neighbors of the complement color.



50.1360, -3.1658, -18.2455



50.1348, 7.3664, 15.5335



50.1360, -17.9253, -6.4118

Square

The Square scheme is like the rectangle color scheme, but the four colors are evenly spaced on the color wheel.



50.1360, 7.3643, 15.5342



50.1360, -17.4958, 11.0847



50.1360, -11.9869, -14.7133



50.1360, 14.0901, -7.3699

Rectangle

The Rectangle color scheme consists of four colors that form a rectangle on the color wheel.



50.1348, 7.3664, 15.5335



50.1360, -8.4103, 16.7160



50.1360, -11.9869, -14.7133



50.1360, 3.3244, -16.9969

Sweetspot

The Sweet Spot groups the original color and five complimentary colors.



50.1360, 7.3643, 15.5342



78.5612, -0.4536, 10.3321



45.1132, 25.3232, -6.4794



36.4138, -0.0104, 5.0807



92.0917, -4.9138, 5.0035



39.3538, -2.0998, 2.1382

Same Dimension

The Same Dimension uses a secret algorithm to generate beautiful new colors.



50.1360, 7.3643, 15.5342



63.7303, 13.6548, 23.4414



59.2201, -8.1496, 23.2360



28.2804, -0.5182, 3.1834



30.3352, 27.2480, 19.1695



5.6860, 2.0377, 3.5394

Inverse Universe

The Inverse Universe completely reimagines the original color for something new.



50.7476, -8.4594, -12.7322



64.6948, -11.7477, -21.9499



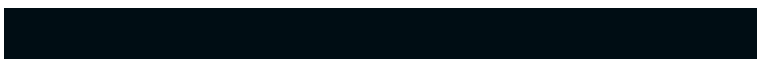
41.5987, 7.0960, -27.7425



28.3550, -2.3974, -0.1724



31.0134, -2.0183, -34.4072



5.7314, -1.6792, -3.5389

Previews

White Background



This preview shows how the HunterLab color 50.1348, 7.3664, 15.5335 looks on a white background.

Color Contrast Check

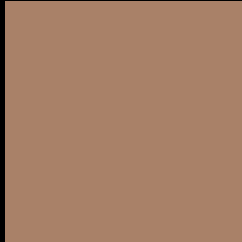
Large Text (above 18pt) WCAG AA ✓ Pass

Any Text WCAG AA × Fail

Large Text (above 18pt) WCAG AAA × Fail

Any Text WCAG AAA × Fail

Black Background



This preview shows how the HunterLab color 50.1348, 7.3664, 15.5335 looks on a black background.

Color Contrast Check

Large Text (above 18pt) WCAG AA ✓ Pass

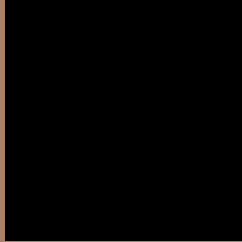
Any Text WCAG AA ✓ Pass

Large Text (above 18pt) WCAG AAA ✓ Pass

Any Text WCAG AAA × Fail

If you want to check with other color combinations, try the [Color Contrast Checker](#).

HunterLab 50.1348, 7.3664, 15.5335 Background



This preview shows how black text looks on a background with the HunterLab color 50.1348, 7.3664, 15.5335.



This preview shows how white text looks on a background with the HunterLab color 50.1348, 7.3664,

Color Blindness Simulation

Color vision deficiency is a very complex topic, and I could not describe the different causes any better than Wikipedia does, so if you want to learn more, you should check out their [article about color blindness](#).

Dichromacy



Original Color

50.1348, 7.3664, 15.5335

Protanopia

50.1768, -3.5516, 14.0924

Deuteranopia

50.1629, 3.3091, 15.8014



Tritanopia

50.1589, 14.1784, 4.4957

Trichromacy



Original Color

50.1348, 7.3664, 15.5335

Protanomaly

50.0802, 0.3849, 14.3980

Deuteranomaly

50.2108, 4.8514, 15.8723

Tritanomaly

50.0097, 11.8190, 8.8064

Monochromacy



Original Color

50.1348, 7.3664, 15.5335

Achromatopsia

50.4135, -2.6899, 2.7391

Achromatomaly

50.2234, 0.3377, 7.6513

CSS Examples

Text

The CSS property to change the color of the text to HunterLab 50.1348, 7.3664, 15.5335 is called "color". The color property can be set on classes, ids or directly on the HTML element.

This example shows how text in the color `rgb(169, 129, 104)` looks like.

```
.text, #text, p{  
    color:rgb(169, 129, 104)  
}
```

If you want to add a text shadow in that color use the text-shadow property, you can generate a text shadow directly with our [CSS Text Shadow Generator](#).

Here you see how black text with a 4 pixel rgb(169, 129, 104) colored shadow looks like.

```
.shadow{ text-shadow: 4px 4px 2px rgb(169, 129, 104) }
```

Border

The CSS property to change the border of an element to HunterLab 50.1348, 7.3664, 15.5335 is called "border". The border property can be set on classes, ids or directly on the HTML element.

This example shows the color as border, it can be applied via the CSS property "border" or "border-color".

```
.border, #border, table{ border:4px solid rgb(169, 129, 104) }
```


If only the border color should be changed use the property `border-color`.

```
.border{ border-color:rgb(169, 129, 104) }
```

If you want to add a box shadow in that color use:

Here you see how a box with a 4 pixel `rgb(169, 129, 104)` colored shadow looks like.

```
.boxshadow{ -moz-box-shadow:4px 4px 4px  
4px rgb(169, 129, 104); -webkit-box-  
shadow:4px 4px 4px 4px rgb(169, 129, 104);  
box-shadow:4px 4px 4px 4px rgb(169, 129,  
104) }
```

Background

The CSS property to change the background color of an element to HunterLab 50.1348, 7.3664, 15.5335 is called "background". The background property can be set on classes, ids or directly on the HTML element.

```
.background, #background, body{  
background: rgb(169, 129, 104) }
```

If only the background color should be changed can be used:

```
.background{ background-color: rgb(169,  
129, 104) }
```

This example shows the color as background, it is applied via the CSS property "background".

To optimize and compress your CSS code, you can use our [online CSS compressor and optimizer](#) based on csstidy. If you want to create a linear or radial gradient as background or border, check our [CSS Gradient Generator](#).

Hey! You found this booklet interesting? Support Converting Colors with the new Membership Option!

The pro membership hides all ads, plus gives you double the colors in the color bucket, and more awesome pro features!

[Learn more, Memberships starting at \\$2.50/m!](#)

**Follow me
on Twitter!**

@ConvertingColor