

Converting Colors

HunterLab(50.1789, 14.9932,
5.7312)

Have a look what the booklet for
HunterLab(50.1789, 14.9932,
5.7312) contains.

HunterLab(50.0526, 14.9729, 5.6687)	3
<i>Conversions</i>	4
<i>Details</i>	6
<i>Harmonies</i>	12
<i>Previews</i>	24
<i>Color Blindness Simulation</i>	28
<i>CSS Examples</i>	31

Color

**HunterLab(50.0526, 14.9729,
5.6687)**

Conversions

Conversions Part 1

Format	Color
Hex	AE7C83
RGB	174, 124, 131
RGB Percent	68%, 49%, 51%
CMY	0.3176, 0.5137, 0.4863
CMYK	0.00, 0.29, 0.25, 0.32
HSL	352°, 24%, 58%
HSV	352°, 29%, 68%
XYZ	28.7599, 25.0526, 24.7926
YIQ	139.7480, 27.5530, 12.7770

Conversions

Conversions Part 2

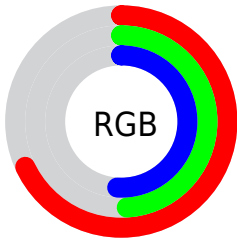
Format	Color
R_{YB}	174, 124, 131
Decimal	11435139
CIE _{Lab}	57.13, 20.47, 3.95
CIE _{LCh}	57, 20.850, 10.929
Yxy	25.0538, 0.3659, 0.3187
Android (android.graphics.Color)	4289625219 (0xFFAE7C83)
YUV	139.7480, -4.3128, 30.0390
Hunter-Lab	50.0526, 14.9729, 5.6687

Details

The HunterLab color **50.0526, 14.9729, 5.6687** is a dark color, and the websafe version is hex **996666**. A complement of this color would be **61.1128, -18.0833, 1.8704**, and the grayscale version is **51.1197, -2.7276, 2.7774**.

A 20% lighter version of the original color is **71.9222, 15.6190, 7.2088**, and **31.0394, 13.4527, 4.1137** is the 20% darker color. If you saturate the color by 10%, you get **45.4902, 21.7339, 6.8617**, and if you desaturate by 10%, it is **54.9929, 8.3636, 4.7287**.

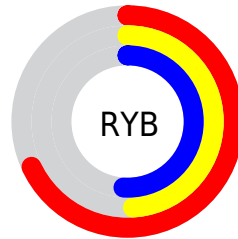
Distribution



Red (68%)

Green (49%)

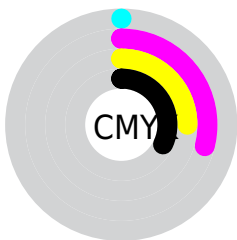
Blue (51%)



Red (68%)

Yellow (49%)

Blue (51%)

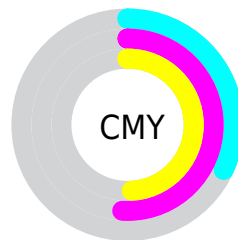


Cyan (0%)

Magenta (29%)

Yellow (25%)

Black (32%)



Cyan (32%)

Magenta (51%)

Yellow (49%)

Brightness & Saturation Gradients

These gradients show how the HunterLab color 50.0526, 14.9729, 5.6687 changes by changing the brightness by 10 percent. The first figure shows a shift by +10% for each color and the second figure -10%.

Similar to the brightness gradients but the following saturation gradients show a change of the HunterLab color 50.0526, 14.9729, 5.6687 by changing the saturation by 10% instead.

■ 50.0526, 14.9729,
5.6687

■ 50.0526, 14.9729,
5.6687

166.7650, 16.5325,
13.5534

■ 40.1462, 14.4149,
4.9078

■ 71.9336, 15.7989,
7.2617

■ 30.9953, 13.7463,
4.1676

■ 83.8256, 16.0911,
8.0925

■ 22.6699, 12.9469,
3.4462

■ 96.3090, 16.3122,
8.9465

■ 15.2617, 11.9946,
2.7381

109.3572, 16.4684,
9.8234

■ 8.8831, 10.9636,
2.3282

122.9465, 16.5645,
10.7229

0.0000, INF, NaN

0.0000, NaN, NaN

137.0563, 16.6049,

11.6447

0.0000, NaN, NaN

151.6680, 16.5932,
12.5883

0.0000, NaN, NaN

■ 50.0526, 14.9729,
5.6687

■ 50.0526, 14.9729,
5.6687

■ 45.4902, 21.7339,
6.8617

■ 54.9929, 8.3636,
4.7287

■ 41.3745, 28.5372,
8.3252

■ 60.2482, 1.9562,
4.0084

■ 37.7912, 35.1538,
10.0545

■ 65.7724, -4.2462,
3.4768

■ 34.8304, 41.2131,
11.9959

■ 71.5275, -10.2581,
3.1046

■ 32.5720, 46.2203,
14.0284

■ 77.4837, -16.1020,
2.8664

■ 31.0592, 49.6847,
15.9668

■ 83.6168, -21.8020,
2.7411

■ 30.2030, 51.5670,
17.5669

■ 89.9073, -27.3814,
2.7112

■ 30.1100, 51.7881,
17.7208

■ 93.5233, -28.9478,
-0.5915

■ 93.6689, -28.1135,
-2.6581

Harmonies

Analogous

The Analogous color harmony consists of three colors that are next to each other on the color wheel.



50.0538, 14.2702, -2.8015



50.0526, 14.9729, 5.6687



50.0538, 10.7056, 12.1301

Triad

The Triadic color harmony groups three colors that are evenly spaced from another and form a triangle on the color wheel.



50.0538, 14.9709, 5.6696



50.0538, -13.2421, 13.3860



50.0538, -8.0615, -14.9179

Complementary

The Complementary color scheme is a pair of colors which are on the opposite of each other on the color wheel.



50.0526, 14.9729, 5.6687



61.1128, -18.0833, 1.8704

Split Complementary

Split-complementary colors differ from the complementary color scheme. The scheme consists of three colors, the original color and two neighbors of the complement color.



50.0538, -14.7798, -8.9565



50.0526, 14.9729, 5.6687



50.0538, -17.6256, 7.6846

Square

The Square scheme is like the rectangle color scheme, but the four colors are evenly spaced on the color wheel.



50.0538, 14.9709, 5.6696



50.0538, -5.8285, 16.0473



50.0538, -18.1684, -0.4111



50.0538, 0.5618, -15.7097

Rectangle

The Rectangle color scheme consists of four colors that form a rectangle on the color wheel.



50.0526, 14.9729, 5.6687



50.0538, 5.7809, 14.8083



50.0538, -18.1684, -0.4111



50.0538, -10.6014, -13.4095

Sweetspot

The Sweet Spot groups the original color and five complimentary colors.



50.0538, 14.9709, 5.6696



80.8336, 2.9968, 5.4345



50.6296, 19.5611, -15.3540



37.6205, 1.9884, 2.6205



94.3401, -5.0338, 5.1257



41.3092, -2.2042, 2.2444

Same Dimension

The Same Dimension uses a secret algorithm to generate beautiful new colors.



50.0538, 14.9709, 5.6696



63.7386, 25.4905, 8.5349



54.4540, 5.3174, 12.8836



28.3424, 1.0945, 1.9121



25.6538, 44.1447, 14.9347



4.3429, 7.5994, 1.5500

Inverse Universe

The Inverse Universe completely reimagines the original color for something new.



50.0538, 14.9709, 5.6696



63.7386, 25.4905, 8.5349



55.9348, -8.7693, -8.1332



28.3424, 1.0945, 1.9121



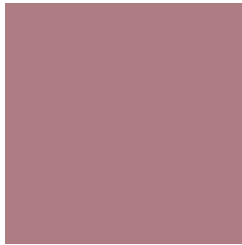
25.6538, 44.1447, 14.9347



4.3429, 7.5994, 1.5500

Previews

White Background



This preview shows how the HunterLab color 50.0526, 14.9729, 5.6687 looks on a white background.

Color Contrast Check

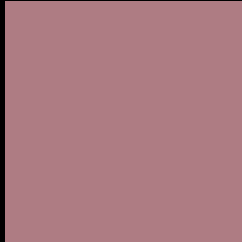
Large Text (above 18pt) WCAG AA ✓ Pass

Any Text WCAG AA × Fail

Large Text (above 18pt) WCAG AAA × Fail

Any Text WCAG AAA × Fail

Black Background



This preview shows how the HunterLab color 50.0526, 14.9729, 5.6687 looks on a black background.

Color Contrast Check

Large Text (above 18pt) WCAG AA ✓ Pass

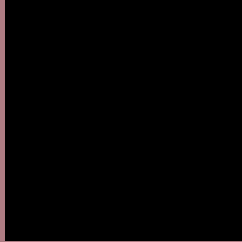
Any Text WCAG AA ✓ Pass

Large Text (above 18pt) WCAG AAA ✓ Pass

Any Text WCAG AAA × Fail

If you want to check with other color combinations, try the [Color Contrast Checker](#).

HunterLab 50.0526, 14.9729, 5.6687 Background



This preview shows how black text looks on a background with the HunterLab color 50.0526, 14.9729, 5.6687.



This preview shows how white text looks on a background with the HunterLab color 50.0526, 14.9729,

Color Blindness Simulation

Color vision deficiency is a very complex topic, and I could not describe the different causes any better than Wikipedia does, so if you want to learn more, you should check out their [article about color blindness](#).

Dichromacy



Original Color

50.0526, 14.9729, 5.6687

Protanopia

50.3008, -1.6228, 2.6250

Deuteranopia

50.2295, 3.3442, 6.4946



Tritanopia

50.1073, 15.2530, 4.8860

Trichromacy



Original Color

50.0526, 14.9729, 5.6687

Protanomaly

49.9271, 4.0575, 3.6157

Deuteranomaly

50.1538, 7.2926, 6.0660

Tritanomaly

50.0799, 15.1124, 5.2790

Monochromacy



Original Color

50.0526, 14.9729, 5.6687

Achromatopsia

51.2104, -2.7325, 2.7824

Achromatomaly

50.5289, 3.3851, 3.4245

CSS Examples

Text

The CSS property to change the color of the text to HunterLab 50.0526, 14.9729, 5.6687 is called "color". The color property can be set on classes, ids or directly on the HTML element.

This example shows how text in the color `rgb(174, 124, 131)` looks like.

```
.text, #text, p{  
    color:rgb(174, 124, 131)  
}
```

If you want to add a text shadow in that color use the text-shadow property, you can generate a text shadow directly with our [CSS Text Shadow Generator](#).

Here you see how black text with a 4 pixel rgb(174, 124, 131) colored shadow looks like.

```
.shadow{ text-shadow: 4px 4px 2px rgb(174, 124, 131) }
```

Border

The CSS property to change the border of an element to HunterLab 50.0526, 14.9729, 5.6687 is called "border". The border property can be set on classes, ids or directly on the HTML element.

This example shows the color as border, it can be applied via the CSS property "border" or "border-color".

```
.border, #border, table{ border:4px solid rgb(174, 124, 131) }
```


If only the border color should be changed use the property `border-color`.

```
.border{ border-color:rgb(174, 124, 131) }
```

If you want to add a box shadow in that color use:

Here you see how a box with a 4 pixel `rgb(174, 124, 131)` colored shadow looks like.

```
.boxshadow{ -moz-box-shadow:4px 4px 4px  
4px rgb(174, 124, 131); -webkit-box-  
shadow:4px 4px 4px 4px rgb(174, 124, 131);  
box-shadow:4px 4px 4px 4px rgb(174, 124,  
131) }
```

Background

The CSS property to change the background color of an element to HunterLab 50.0526, 14.9729, 5.6687 is called "background". The background property can be set on classes, ids or directly on the HTML element.

```
.background, #background, body{  
background: rgb(174, 124, 131) }
```

If only the background color should be changed can be used:

```
.background{ background-color: rgb(174,  
124, 131) }
```

This example shows the color as background, it is applied via the CSS property "background".

To optimize and compress your CSS code, you can use our [online CSS compressor and optimizer](#) based on csstidy. If you want to create a linear or radial gradient as background or border, check our [CSS Gradient Generator](#).

Hey! You found this booklet interesting? Support Converting Colors with the new Membership Option!

The pro membership hides all ads, plus gives you double the colors in the color bucket, and more awesome pro features!

[Learn more, Memberships starting at \\$2.50/m!](#)

**Follow me
on Twitter!**

@ConvertingColor