

Converting Colors

HunterLab(50.2322, 13.8779,
14.0136)

Have a look what the booklet for
HunterLab(50.2322, 13.8779,
14.0136) contains.

HunterLab(50.1030, 14.0634, 13.9986)	3
<i>Conversions</i>	4
<i>Details</i>	6
<i>Harmonies</i>	12
<i>Previews</i>	24
<i>Color Blindness Simulation</i>	28
<i>CSS Examples</i>	31

Color

**HunterLab(50.1030, 14.0634,
13.9986)**

Conversions

Conversions Part 1

Format	Color
Hex	B37C6D
RGB	179, 124, 109
RGB Percent	70%, 49%, 43%
CMY	0.2980, 0.5137, 0.5725
CMYK	0.00, 0.31, 0.39, 0.30
HSL	13°, 32%, 56%
HSV	13°, 39%, 70%
XYZ	28.5583, 25.1031, 17.8082
YIQ	138.7350, 37.5950, 6.9950

Conversions

Conversions Part 2

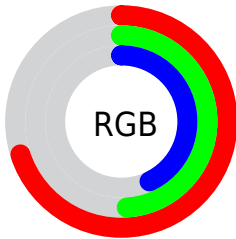
Format	Color
R _Y B	179, 128, 109
Decimal	11762797
CIE Lab	57.18, 19.47, 16.79
CIE LCh	57, 25.714, 40.769
Yxy	25.1043, 0.3996, 0.3512
Android (android.graphics.Color)	4289952877 (0xFFB37C6D)
YUV	138.7350, -14.6594, 35.3124
Hunter-Lab	50.1030, 14.0634, 13.9986

Details

The HunterLab color **50.1030, 14.0634, 13.9986** is a dark color, and the websafe version is hex **996666**. A complement of this color would be **57.4939, -14.5581, -8.8075**, and the grayscale version is **50.7531, -2.7081, 2.7575**.

A 20% lighter version of the original color is **72.0072, 14.6592, 16.8639**, and **31.0711, 12.6715, 10.9433** is the 20% darker color. If you saturate the color by 10%, you get **46.3465, 19.2334, 16.2043**, and if you desaturate by 10%, it is **54.1386, 9.1585, 11.5681**.

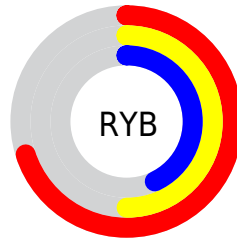
Distribution



Red (70%)

Green (49%)

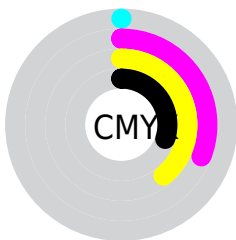
Blue (43%)



Red (70%)

Yellow (50%)

Blue (43%)

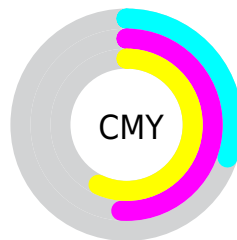


Cyan (0%)

Magenta (31%)

Yellow (39%)

Black (30%)



Cyan (30%)

Magenta (51%)

Yellow (57%)

Brightness & Saturation Gradients

These gradients show how the HunterLab color 50.1030, 14.0634, 13.9986 changes by changing the brightness by 10 percent. The first figure shows a shift by +10% for each color and the second figure -10%.

Similar to the brightness gradients but the following saturation gradients show a change of the HunterLab color 50.1030, 14.0634, 13.9986 by changing the saturation by 10% instead.

50.1030, 14.0634,
13.9986

50.1030, 14.0634,
13.9986

166.8404, 15.2578,
27.2386

40.1930, 13.5542,
12.4328

71.9906, 14.7973,
17.0215

31.0383, 12.9370,
10.8055

83.8855, 15.0463,
18.4992

22.7086, 12.1912,
9.0869

96.3718, 15.2259,
19.9644

15.2956, 11.2941,
7.2316

109.4226, 15.3420,
21.4219

8.9136, 10.3041,
6.2395

123.0145, 15.3993,
22.8754

0.0000, INF, NaN

0.0000, NaN, NaN

137.1269, 15.4022,

24.3280

0.0000, NaN, NaN

151.7410, 15.3540,
25.7818

0.0000, NaN, NaN

■ 50.1030, 14.0634,
13.9986

■ 50.1030, 14.0634,
13.9986

■ 46.3465, 19.2334,
16.2043

■ 54.1386, 9.1585,
11.5681

■ 42.9080, 24.6337,
18.1127

■ 58.4132, 4.5332,
8.9647

■ 39.8361, 30.1677,
19.6389

■ 62.8971, 0.1738,
6.2291

■ 37.1807, 35.6693,
20.6911

■ 67.5649, -3.9412,
3.3904

■ 34.9884, 40.8907,
21.1931

■ 72.3952, -7.8368,
0.4692

■ 33.2861, 45.4908,
21.2252

■ 77.3703, -11.5384,
-2.5194

■ 33.1565, 45.8535,
21.2336

■ 82.4755, -15.0701,
-5.5649

■ 87.6984, -18.4537,
-8.6593

■ 92.4836, -24.8023,
-4.0980

Harmonies

Analogous

The Analogous color harmony consists of three colors that are next to each other on the color wheel.



50.1042, 19.4270, 6.2838



50.1030, 14.0634, 13.9986



50.1042, 4.3570, 18.0377

Triad

The Triadic color harmony groups three colors that are evenly spaced from another and form a triangle on the color wheel.



50.1042, 14.0611, 13.9994



50.1042, -20.8337, 8.8138



50.1042, 1.2681, -20.8508

Complementary

The Complementary color scheme is a pair of colors which are on the opposite of each other on the color wheel.



50.1030, 14.0634, 13.9986



57.4939, -14.5581, -8.8075

Split Complementary

Split-complementary colors differ from the complementary color scheme. The scheme consists of three colors, the original color and two neighbors of the complement color.



50.1042, -9.3415, -19.7699



50.1030, 14.0634, 13.9986



50.1042, -21.5078, -1.1106

Square

The Square scheme is like the rectangle color scheme, but the four colors are evenly spaced on the color wheel.



50.1042, 14.0611, 13.9994



50.1042, -15.5424, 15.5123



50.1042, -17.4691, -11.9824



50.1042, 11.6356, -14.6814

Rectangle

The Rectangle color scheme consists of four colors that form a rectangle on the color wheel.



50.1030, 14.0634, 13.9986



50.1042, -2.9550, 18.7462



50.1042, -17.4691, -11.9824



50.1042, -2.3966, -21.3515

Sweetspot

The Sweet Spot groups the original color and five complimentary colors.



50.1042, 14.0611, 13.9994



82.2873, 2.0030, 9.4865



48.2056, 29.8768, -13.5555



38.3678, 1.2922, 4.6874



95.4677, -5.0939, 5.1869



42.2927, -2.2566, 2.2978

Same Dimension

The Same Dimension uses a secret algorithm to generate beautiful new colors.



50.1042, 14.0611, 13.9994



62.6609, 24.8125, 21.3191



59.2804, -2.6345, 22.0115



29.6493, 0.1247, 2.9691



28.0154, 38.1033, 17.9300



5.7597, 4.5692, 3.6291

Inverse Universe

The Inverse Universe completely reimagines the original color for something new.



57.4939, -14.5581, -8.8075



74.4846, -21.4063, -15.2773



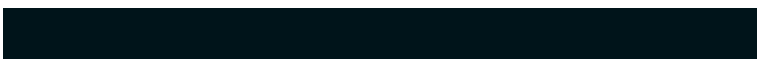
47.4040, 1.4890, -24.1050



30.5225, -3.2079, 0.2856



39.7270, -13.3981, -20.7325



7.5755, -3.0858, -2.8074

Previews

White Background



This preview shows how the HunterLab color 50.1030, 14.0634, 13.9986 looks on a white background.

Color Contrast Check

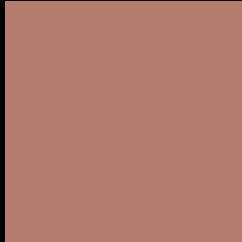
Large Text (above 18pt) WCAG AA ✓ Pass

Any Text WCAG AA × Fail

Large Text (above 18pt) WCAG AAA × Fail

Any Text WCAG AAA × Fail

Black Background



This preview shows how the HunterLab color 50.1030, 14.0634, 13.9986 looks on a black background.

Color Contrast Check

Large Text (above 18pt) WCAG AA ✓ Pass

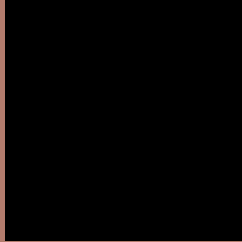
Any Text WCAG AA ✓ Pass

Large Text (above 18pt) WCAG AAA ✓ Pass

Any Text WCAG AAA × Fail

If you want to check with other color combinations, try the [Color Contrast Checker](#).

HunterLab 50.1030, 14.0634, 13.9986 Background



This preview shows how black text looks on a background with the HunterLab color 50.1030, 14.0634, 13.9986.



This preview shows how white text looks on a background with the HunterLab color 50.1030, 14.0634,

Color Blindness Simulation

Color vision deficiency is a very complex topic, and I could not describe the different causes any better than Wikipedia does, so if you want to learn more, you should check out their [article about color blindness](#).

Dichromacy



Original Color

50.1030, 14.0634, 13.9986

Protanopia

50.1486, -3.3406, 11.6666

Deuteranopia

50.1409, 3.3993, 14.5081



Tritanopia

50.1101, 18.8967, 6.2204

Trichromacy



Original Color

50.1030, 14.0634, 13.9986

Protanomaly

49.8627, 2.7248, 12.1963

Deuteranomaly

50.1079, 7.4443, 14.2195

Tritanomaly

50.0275, 16.9767, 9.3025

Monochromacy



Original Color

50.1030, 14.0634, 13.9986

Achromatopsia

50.8117, -2.7112, 2.7607

Achromatomaly

50.4765, 2.7182, 7.1630

CSS Examples

Text

The CSS property to change the color of the text to HunterLab 50.1030, 14.0634, 13.9986 is called "color". The color property can be set on classes, ids or directly on the HTML element.

This example shows how text in the color `rgb(179, 124, 109)` looks like.

```
.text, #text, p{  
    color:rgb(179, 124, 109)  
}
```

If you want to add a text shadow in that color use the text-shadow property, you can generate a text shadow directly with our [CSS Text Shadow Generator](#).

Here you see how black text with a 4 pixel rgb(179, 124, 109) colored shadow looks like.

```
.shadow{ text-shadow: 4px 4px 2px rgb(179, 124, 109) }
```

Border

The CSS property to change the border of an element to HunterLab 50.1030, 14.0634, 13.9986 is called "border". The border property can be set on classes, ids or directly on the HTML element.

This example shows the color as border, it can be applied via the CSS property "border" or "border-color".

```
.border, #border, table{ border:4px solid rgb(179, 124, 109) }
```


If only the border color should be changed use the property `border-color`.

```
.border{ border-color:rgb(179, 124, 109) }
```

If you want to add a box shadow in that color use:

Here you see how a box with a 4 pixel `rgb(179, 124, 109)` colored shadow looks like.

```
.boxshadow{ -moz-box-shadow:4px 4px 4px  
4px rgb(179, 124, 109); -webkit-box-  
shadow:4px 4px 4px 4px rgb(179, 124, 109);  
box-shadow:4px 4px 4px 4px rgb(179, 124,  
109) }
```

Background

The CSS property to change the background color of an element to HunterLab 50.1030, 14.0634, 13.9986 is called "background". The background property can be set on classes, ids or directly on the HTML element.

```
.background, #background, body{  
background: rgb(179, 124, 109) }
```

If only the background color should be changed can be used:

```
.background{ background-color: rgb(179,  
124, 109) }
```

This example shows the color as background, it is applied via the CSS property "background".

To optimize and compress your CSS code, you can use our [online CSS compressor and optimizer](#) based on csstidy. If you want to create a linear or radial gradient as background or border, check our [CSS Gradient Generator](#).

Hey! You found this booklet interesting? Support Converting Colors with the new Membership Option!

The pro membership hides all ads, plus gives you double the colors in the color bucket, and more awesome pro features!

[Learn more, Memberships starting at \\$2.50/m!](#)

**Follow me
on Twitter!**

@ConvertingColor