

Converting Colors

HunterLab(50.3751, 63.2356,
16.0077)

Have a look what the booklet for
HunterLab(50.3751, 63.2356,
16.0077) contains.

HunterLab(50.3494, 63.2926, 16.0762)	3
<i>Conversions</i>	4
<i>Details</i>	6
<i>Harmonies</i>	12
<i>Previews</i>	24
<i>Color Blindness Simulation</i>	28
<i>CSS Examples</i>	31

Color

**HunterLab(50.3494, 63.2926,
16.0762)**

Conversions

Conversions Part 1

Format	Color
Hex	F54A6A
RGB	245, 74, 106
RGB Percent	96%, 29%, 42%
CMY	0.0392, 0.7098, 0.5843
CMYK	0.00, 0.70, 0.57, 0.04
HSL	349°, 90%, 63%
HSV	349°, 70%, 96%
XYZ	42.7065, 25.3506, 16.2779
YIQ	128.7770, 91.6440, 46.2040

Conversions

Conversions Part 2

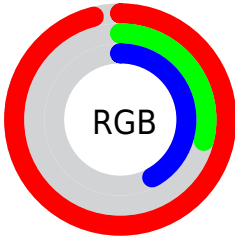
Format	Color
R_{YB}	245, 74, 106
Decimal	16075370
CIE _{Lab}	57.42, 66.51, 20.43
CIE _{LCh}	57, 69.579, 17.077
Yxy	25.3521, 0.5064, 0.3006
Android (android.graphics.Color)	4294265450 (0xFFFF54A6A)
YUV	128.7770, -11.2291, 101.9276
Hunter-Lab	50.3494, 63.2926, 16.0762

Details

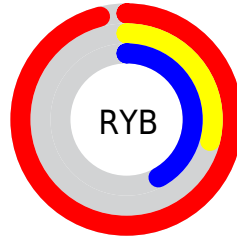
The HunterLab color **50.3494, 63.2926, 16.0762** is a dark color, and the websafe version is hex **FF3366**. The color can be described as middle washed rose. A complement of this color would be **84.5963, -47.8414, 7.1659**, and the grayscale version is **46.7855, -2.4964, 2.5419**.

A 20% lighter version of the original color is **63.6155, 44.9998, 10.2580**, and **32.0326, 55.8425, 13.0574** is the 20% darker color. If you saturate the color by 10%, you get **47.2496, 70.1592, 19.2734**, and if you desaturate by 10%, it is **54.5417, 54.5483, 13.1368**.

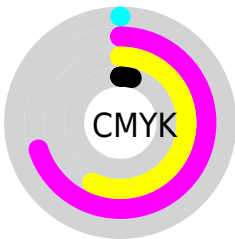
Distribution



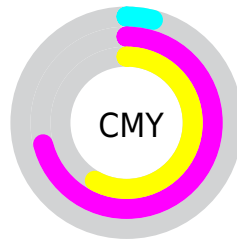
- Red (96%)
- Green (29%)
- Blue (42%)



- Red (96%)
- Yellow (29%)
- Blue (42%)



- Cyan (0%)
- Magenta (70%)
- Yellow (57%)
- Black (4%)



- Cyan (4%)
- Magenta (71%)
- Yellow (58%)

Brightness & Saturation Gradients

These gradients show how the HunterLab color 50.3494, 63.2926, 16.0762 changes by changing the brightness by 10 percent. The first figure shows a shift by +10% for each color and the second figure -10%.

Similar to the brightness gradients but the following saturation gradients show a change of the HunterLab color 50.3494, 63.2926, 16.0762 by changing the saturation by 10% instead.

50.3494, 63.2926,
16.0762

50.3494, 63.2926,
16.0762

167.2085, 79.2566,
30.9238

40.4222, 61.0704,
14.2662

72.2688, 67.4872,
19.5323

31.2486, 58.8255,
12.3690

84.1783, 69.4448,
21.2049

22.8982, 56.6637,
10.3477

96.6784, 71.3050,
22.8537

15.4619, 54.8765,
8.2506

109.7425, 73.0703,
24.4852

9.0614, 54.4652,
6.3430

123.3471, 74.7442,
26.1044

0.0000, INF, NaN

0.0000, INF, NaN

137.4717, 76.3304,

27.7153

0.0000, NaN, NaN

152.0977, 77.8333,
29.3209

0.0000, NaN, NaN

■ 50.3494, 63.2926,
16.0762

■ 50.3494, 63.2926,
16.0762

■ 47.2496, 70.1592,
19.2734

■ 54.5417, 54.5483,
13.1368

■ 45.2807, 74.4688,
22.4226

■ 59.7087, 44.7337,
10.6394


■ 44.2976, 76.2463,
25.1363


■ 65.7139, 34.4781,
8.6550


■ 44.2813, 76.2756,
25.1832

■ 72.4242, 24.1879,
7.1733

■ 79.7240, 14.0796,
6.1436

 87.5184, 4.2451,
5.5025

 95.7313, -5.2949,
5.1881

 99.0719, -8.5795,
4.2790

Harmonies

Analogous

The Analogous color harmony consists of three colors that are next to each other on the color wheel.



50.3508, 64.8415, -10.7807



50.3494, 63.2926, 16.0762



50.3508, 41.7168, 28.3125

Triad

The Triadic color harmony groups three colors that are evenly spaced from another and form a triangle on the color wheel.



50.3508, 63.2879, 16.0773



50.3508, -37.6642, 27.2847



50.3508, -14.6813, -82.4925

Complementary

The Complementary color scheme is a pair of colors which are on the opposite of each other on the color wheel.



50.3494, 63.2926, 16.0762



84.5963, -47.8414, 7.1659

Split Complementary

Split-complementary colors differ from the complementary color scheme. The scheme consists of three colors, the original color and two neighbors of the complement color.



50.3508, -35.6036, -54.4294



50.3494, 63.2926, 16.0762



50.3508, -46.6808, 13.3150

Square

The Square scheme is like the rectangle color scheme, but the four colors are evenly spaced on the color wheel.



50.3508, 63.2879, 16.0773



50.3508, -18.1909, 31.7718



50.3508, -46.0248, -15.6775



50.3508, 14.9491, -80.1365

Rectangle

The Rectangle color scheme consists of four colors that form a rectangle on the color wheel.



50.3494, 63.2926, 16.0762



50.3508, 21.1908, 31.3335



50.3508, -46.0248, -15.6775



50.3508, -22.8103, -75.8403

Sweetspot

The Sweet Spot groups the original color and five complimentary colors.



50.3508, 63.2879, 16.0773



82.4440, 16.0457, 6.5407



50.3103, 74.2350, -69.5039



37.1472, 8.7701, 3.1506

0.0000, NaN, NaN



46.2646, -2.4686, 2.5136

Same Dimension

The Same Dimension uses a secret algorithm to generate beautiful new colors.



50.3508, 63.2879, 16.0773



48.3986, 75.7597, 21.6434



58.8661, 37.2739, 30.3984



40.6610, 1.8297, 2.5428



32.5242, 56.0686, 18.1488



9.7121, 16.8804, 4.3523

Inverse Universe

The Inverse Universe completely reimagines the original color for something new.



50.3508, 63.2879, 16.0773



48.3986, 75.7597, 21.6434



68.1912, -18.4715, -33.4139



40.6610, 1.8297, 2.5428



32.5242, 56.0686, 18.1488



9.7121, 16.8804, 4.3523

Previews

White Background



This preview shows how the HunterLab color 50.3494, 63.2926, 16.0762 looks on a white background.

Color Contrast Check

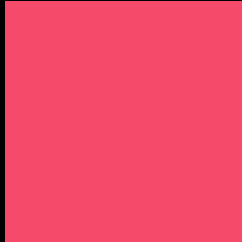
Large Text (above 18pt) WCAG AA ✓ Pass

Any Text WCAG AA × Fail

Large Text (above 18pt) WCAG AAA × Fail

Any Text WCAG AAA × Fail

Black Background



This preview shows how the HunterLab color 50.3494, 63.2926, 16.0762 looks on a black background.

Color Contrast Check

Large Text (above 18pt) WCAG AA ✓ Pass

Any Text WCAG AA ✓ Pass

Large Text (above 18pt) WCAG AAA ✓ Pass

Any Text WCAG AAA × Fail

If you want to check with other color combinations, try the [Color Contrast Checker](#).

HunterLab 50.3494, 63.2926, 16.0762 Background



This preview shows how black text looks on a background with the HunterLab color 50.3494, 63.2926, 16.0762.



This preview shows how white text looks on a background with the HunterLab color 50.3494, 63.2926,

Color Blindness Simulation

Color vision deficiency is a very complex topic, and I could not describe the different causes any better than Wikipedia does, so if you want to learn more, you should check out their [article about color blindness](#).

Dichromacy



Original Color

50.3494, 63.2926, 16.0762

Protanopia

50.6135, -2.1091, 3.8653

Deuteranopia

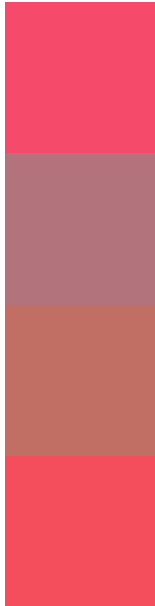
50.2761, 3.4952, 17.4141



Tritanopia

50.4476, 59.1430, 22.5029

Trichromacy



Original Color

50.3494, 63.2926, 16.0762

Protanomaly

48.2968, 20.5282, 6.3014

Deuteranomaly

48.6271, 25.1209, 15.3919

Tritanomaly

50.2953, 60.5120, 20.3835

Monochromacy



Original Color

50.3494, 63.2926, 16.0762

Achromatopsia

46.8536, -2.5000, 2.5456

Achromatomaly

45.7992, 20.0719, 5.1551

CSS Examples

Text

The CSS property to change the color of the text to HunterLab 50.3494, 63.2926, 16.0762 is called "color". The color property can be set on classes, ids or directly on the HTML element.

This example shows how text in the color `rgb(245, 74, 106)` looks like.

```
.text, #text, p{  
    color:rgb(245, 74, 106)  
}
```

If you want to add a text shadow in that color use the text-shadow property, you can generate a text shadow directly with our [CSS Text Shadow Generator](#).

Here you see how black text with a 4 pixel rgb(245, 74, 106) colored shadow looks like.

```
.shadow{ text-shadow: 4px 4px 2px rgb(245, 74, 106) }
```

Border

The CSS property to change the border of an element to HunterLab 50.3494, 63.2926, 16.0762 is called "border". The border property can be set on classes, ids or directly on the HTML element.

This example shows the color as border, it can be applied via the CSS property "border" or "border-color".

```
.border, #border, table{ border:4px solid rgb(245, 74, 106) }
```


If only the border color should be changed use the property `border-color`.

```
.border{ border-color:rgb(245, 74, 106) }
```

If you want to add a box shadow in that color use:

Here you see how a box with a 4 pixel `rgb(245, 74, 106)` colored shadow looks like.

```
.boxshadow{ -moz-box-shadow:4px 4px 4px  
4px rgb(245, 74, 106); -webkit-box-  
shadow:4px 4px 4px 4px rgb(245, 74, 106);  
box-shadow:4px 4px 4px 4px rgb(245, 74,  
106) }
```

Background

The CSS property to change the background color of an element to HunterLab 50.3494, 63.2926, 16.0762 is called "background". The background property can be set on classes, ids or directly on the HTML element.

```
.background, #background, body{  
background: rgb(245, 74, 106) }
```

If only the background color should be changed can be used:

```
.background{ background-color: rgb(245, 74,  
106) }
```

This example shows the color as background, it is applied via the CSS property "background".

To optimize and compress your CSS code, you can use our [online CSS compressor and optimizer](#) based on csstidy. If you want to create a linear or radial gradient as background or border, check our [CSS Gradient Generator](#).

Hey! You found this booklet interesting? Support Converting Colors with the new Membership Option!

The pro membership hides all ads, plus gives you double the colors in the color bucket, and more awesome pro features!

[Learn more, Memberships starting at \\$2.50/m!](#)

**Follow me
on Twitter!**

@ConvertingColor