

Converting Colors

HunterLab(50.4485, 49.9137,
5.8336)

Have a look what the booklet for
HunterLab(50.4485, 49.9137,
5.8336) contains.

HunterLab(50.5269, 50.0600, 5.9720)	3
<i>Conversions</i>	4
<i>Details</i>	6
<i>Harmonies</i>	12
<i>Previews</i>	24
<i>Color Blindness Simulation</i>	28
<i>CSS Examples</i>	31

Color

**HunterLab(50.5269, 50.0600,
5.9720)**

Conversions

Conversions Part 1

Format	Color
Hex	E15D85
RGB	225, 93, 133
RGB Percent	88%, 36%, 52%
CMY	0.1176, 0.6353, 0.4784
CMYK	0.00, 0.59, 0.41, 0.12
HSL	342°, 69%, 62%
HSV	342°, 59%, 88%
XYZ	39.1993, 25.5297, 25.0520
YIQ	137.0280, 65.8320, 40.4240

Conversions

Conversions Part 2

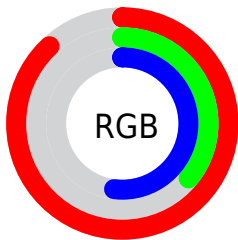
Format	Color
R _Y B	225, 93, 133
Decimal	14769541
CIE Lab	57.59, 54.98, 4.32
CIE LCh	58, 55.154, 4.497
Yxy	25.5310, 0.4366, 0.2844
Android (android.graphics.Color)	4292959621 (0xFFE15D85)
YUV	137.0280, -1.9858, 77.1514
Hunter-Lab	50.5269, 50.0600, 5.9720

Details

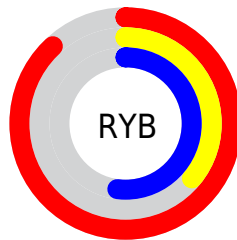
The HunterLab color **50.5269, 50.0600, 5.9720** is a light color, and the websafe version is hex **FF6699**. The color can be described as light muted rose. A complement of this color would be **77.2534, -42.3134, 11.6333**, and the grayscale version is **50.0176, -2.6688, 2.7176**.

A 20% lighter version of the original color is **67.8122, 41.0884, 1.8886**, and **31.3711, 45.9167, 4.2826** is the 20% darker color. If you saturate the color by 10%, you get **46.6299, 58.1315, 8.2271**, and if you desaturate by 10%, it is **55.2674, 40.9972, 4.4121**.

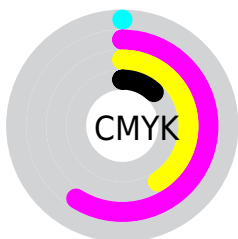
Distribution



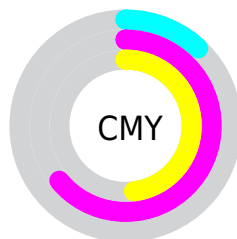
- Red (88%)
- Green (36%)
- Blue (52%)



- Red (88%)
- Yellow (36%)
- Blue (52%)



- Cyan (0%)
- Magenta (59%)
- Yellow (41%)
- Black (12%)



- Cyan (12%)
- Magenta (64%)
- Yellow (48%)

Brightness & Saturation Gradients

These gradients show how the HunterLab color 50.5269, 50.0600, 5.9720 changes by changing the brightness by 10 percent. The first figure shows a shift by +10% for each color and the second figure -10%.

Similar to the brightness gradients but the following saturation gradients show a change of the HunterLab color 50.5269, 50.0600, 5.9720 by changing the saturation by 10% instead.

■ 50.5269, 50.0600,
5.9720

■ 50.5269, 50.0600,
5.9720

167.4731, 62.8417,
14.0128

■ 40.5871, 48.1426,
5.1889

■ 72.4689, 53.5684,
7.6060

■ 31.3999, 46.1407,
4.4242

■ 84.3888, 55.1664,
8.4555

■ 23.0346, 44.1010,
3.6758

■ 96.8988, 56.6646,
9.3273

■ 15.5816, 42.1733,
2.9373

■ 109.9724, 58.0684,
10.2211

■ 9.1661, 40.8938,
2.4545

123.5862, 59.3830,
11.1369

0.0000, INF, NaN

0.0000, INF, NaN

137.7196, 60.6136,

12.0743

0.0000, NaN, NaN

152.3541, 61.7650,
13.0331

0.0000, NaN, NaN

■ 50.5269, 50.0600,
5.9720

■ 50.5269, 50.0600,
5.9720

■ 46.6299, 58.1315,
8.2271

■ 55.2674, 40.9972,
4.4121

■ 43.6739, 64.5297,
11.1048

■ 60.7291, 31.5023,
3.5135

■ 41.7083, 68.6166,
14.4005

■ 66.8002, 21.9266,
3.1976

■ 40.6429, 70.2856,
17.7562

■ 73.3832, 12.4651,
3.3713

■ 40.5302, 70.4442,
18.1669

■ 80.3973, 3.2062,
3.9475

■ 87.7780, -5.8238,
4.8521

■ 95.4737, -14.6315,
6.0252

■ 97.3383, -14.7227,
2.0949

Harmonies

Analogous

The Analogous color harmony consists of three colors that are next to each other on the color wheel.



50.5282, 44.3279, -19.2075



50.5269, 50.0600, 5.9720



50.5282, 39.6901, 21.3982

Triad

The Triadic color harmony groups three colors that are evenly spaced from another and form a triangle on the color wheel.



50.5282, 50.0564, 5.9732



50.5282, -25.6131, 26.7491



50.5282, -20.5473, -52.6780

Complementary

The Complementary color scheme is a pair of colors which are on the opposite of each other on the color wheel.



50.5269, 50.0600, 5.9720



77.2534, -42.3134, 11.6333

Split Complementary

Split-complementary colors differ from the complementary color scheme. The scheme consists of three colors, the original color and two neighbors of the complement color.



50.5282, -34.5245, -27.7605



50.5269, 50.0600, 5.9720



50.5282, -37.0570, 17.8520

Square

The Square scheme is like the rectangle color scheme, but the four colors are evenly spaced on the color wheel.



50.5282, 50.0564, 5.9732



50.5282, -6.1572, 29.4353



50.5282, -39.9981, -0.6997



50.5282, 0.8553, -60.6913

Rectangle

The Rectangle color scheme consists of four colors that form a rectangle on the color wheel.



50.5269, 50.0600, 5.9720



50.5282, 25.9822, 26.5713



50.5282, -39.9981, -0.6997



50.5282, -26.1347, -45.5810

Sweetspot

The Sweet Spot groups the original color and five complimentary colors.



50.5282, 50.0564, 5.9732



84.9930, 13.7847, 3.9100



48.3305, 52.3780, -56.6891



38.2640, 7.8440, 1.7542

0.0000, NaN, NaN



46.2646, -2.4686, 2.5136

Same Dimension

The Same Dimension uses a secret algorithm to generate beautiful new colors.



50.5282, 50.0564, 5.9732



53.0335, 68.5062, 10.0371



54.3771, 34.2177, 22.8124



37.1060, 1.8219, 1.8079



30.7964, 53.5838, 13.3576



8.2034, 14.4580, 2.1274

Inverse Universe

The Inverse Universe completely reimagines the original color for something new.



50.5282, 50.0564, 5.9732



53.0335, 68.5062, 10.0371



70.3167, -24.1897, -17.1580



37.1060, 1.8219, 1.8079



30.7964, 53.5838, 13.3576



8.2034, 14.4580, 2.1274

Previews

White Background



This preview shows how the HunterLab color 50.5269, 50.0600, 5.9720 looks on a white background.

Color Contrast Check

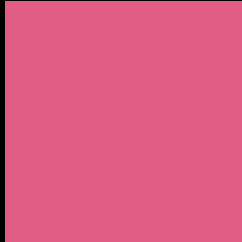
Large Text (above 18pt) WCAG AA ✓ Pass

Any Text WCAG AA × Fail

Large Text (above 18pt) WCAG AAA × Fail

Any Text WCAG AAA × Fail

Black Background



This preview shows how the HunterLab color 50.5269, 50.0600, 5.9720 looks on a black background.

Color Contrast Check

Large Text (above 18pt) WCAG AA ✓ Pass

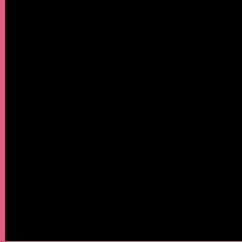
Any Text WCAG AA ✓ Pass

Large Text (above 18pt) WCAG AAA ✓ Pass

Any Text WCAG AAA × Fail

If you want to check with other color combinations, try the [Color Contrast Checker](#).

HunterLab 50.5269, 50.0600, 5.9720 Background



This preview shows how black text looks on a background with the HunterLab color 50.5269, 50.0600, 5.9720.



This preview shows how white text looks on a background with the HunterLab color 50.5269, 50.0600,

Color Blindness Simulation

Color vision deficiency is a very complex topic, and I could not describe the different causes any better than Wikipedia does, so if you want to learn more, you should check out their [article about color blindness](#).

Dichromacy



Original Color

50.5269, 50.0600, 5.9720

Protanopia

50.8243, 0.0477, -6.9460

Deuteranopia

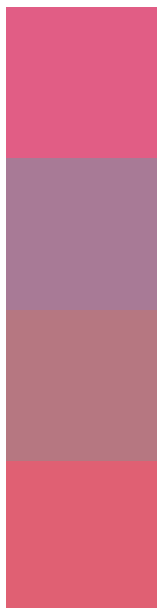
50.7450, 3.5697, 7.8716



Tritanopia

50.4413, 43.8968, 16.1411

Trichromacy



Original Color

50.5269, 50.0600, 5.9720

Protanomaly

49.4428, 16.7747, -3.8408

Deuteranomaly

49.7229, 20.1455, 6.2268

Tritanomaly

50.4488, 46.2308, 12.8335

Monochromacy



Original Color

50.5269, 50.0600, 5.9720

Achromatopsia

50.0158, -2.6687, 2.7175

Achromatomaly

48.8747, 15.4288, 2.1302

CSS Examples

Text

The CSS property to change the color of the text to HunterLab 50.5269, 50.0600, 5.9720 is called "color". The color property can be set on classes, ids or directly on the HTML element.

This example shows how text in the color `rgb(225, 93, 133)` looks like.

```
.text, #text, p{  
    color:rgb(225, 93, 133)  
}
```

If you want to add a text shadow in that color use the text-shadow property, you can generate a text shadow directly with our [CSS Text Shadow Generator](#).

Here you see how black text with a 4 pixel rgb(225, 93, 133) colored shadow looks like.

```
.shadow{ text-shadow: 4px 4px 2px rgb(225, 93, 133) }
```

Border

The CSS property to change the border of an element to HunterLab 50.5269, 50.0600, 5.9720 is called "border". The border property can be set on classes, ids or directly on the HTML element.

This example shows the color as border, it can be applied via the CSS property "border" or "border-color".

```
.border, #border, table{ border:4px solid rgb(225, 93, 133) }
```


If only the border color should be changed use the property `border-color`.

```
.border{ border-color:rgb(225, 93, 133) }
```

If you want to add a box shadow in that color use:

Here you see how a box with a 4 pixel `rgb(225, 93, 133)` colored shadow looks like.

```
.boxshadow{ -moz-box-shadow:4px 4px 4px 4px rgb(225, 93, 133); -webkit-box-shadow:4px 4px 4px 4px rgb(225, 93, 133); box-shadow:4px 4px 4px 4px rgb(225, 93, 133) }
```

Background

The CSS property to change the background color of an element to HunterLab 50.5269, 50.0600, 5.9720 is called "background". The background property can be set on classes, ids or directly on the HTML element.

```
.background, #background, body{  
background: rgb(225, 93, 133) }
```

If only the background color should be changed can be used:

```
.background{ background-color: rgb(225, 93,  
133) }
```

This example shows the color as background, it is applied via the CSS property "background".

To optimize and compress your CSS code, you can use our [online CSS compressor and optimizer](#) based on csstidy. If you want to create a linear or radial gradient as background or border, check our [CSS Gradient Generator](#).

Hey! You found this booklet interesting? Support Converting Colors with the new Membership Option!

The pro membership hides all ads, plus gives you double the colors in the color bucket, and more awesome pro features!

[Learn more, Memberships starting at \\$2.50/m!](#)

**Follow me
on Twitter!**

@ConvertingColor