

Converting Colors

HunterLab(50.5358, 72.9086,
14.7371)

Have a look what the booklet for
HunterLab(50.5358, 72.9086,
14.7371) contains.

HunterLab(50.5328, 72.9018, 14.7692)	3
<i>Conversions</i>	4
<i>Details</i>	6
<i>Harmonies</i>	12
<i>Previews</i>	24
<i>Color Blindness Simulation</i>	28
<i>CSS Examples</i>	31

Color

**HunterLab(50.5328, 72.9018,
14.7692)**

Conversions

Conversions Part 1

Format	Color
Hex	FF3B6F
RGB	255, 59, 111
RGB Percent	100%, 23%, 44%
CMY	0.0000, 0.7686, 0.5647
CMYK	0.00, 0.77, 0.56, 0.00
HSL	344°, 100%, 62%
HSV	344°, 77%, 100%
XYZ	45.6732, 25.5356, 17.5606
YIQ	123.5320, 100.1240, 57.7240

Conversions

Conversions Part 2

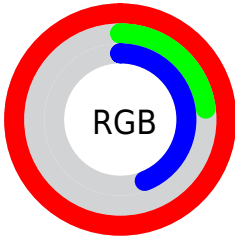
Format	Color
R_{YB}	255, 59, 111
Decimal	16726895
CIE _{Lab}	57.60, 74.41, 18.02
CIE _{LCh}	58, 76.565, 13.614
Yxy	25.5371, 0.5145, 0.2877
Android (android.graphics.Color)	4294916975 (0xFFFF3B6F)
YUV	123.5320, -6.1783, 115.2974
Hunter-Lab	50.5328, 72.9018, 14.7692

Details

The HunterLab color **50.5328, 72.9018, 14.7692** is a dark color, and the websafe version is hex **FF3366**. The color can be described as middle washed rose. A complement of this color would be **87.6142, -54.8283, 14.7870**, and the grayscale version is **44.7113, -2.3857, 2.4292**.

A 20% lighter version of the original color is **61.6722, 50.8123, 6.0296**, and **33.8327, 59.0336, 13.3808** is the 20% darker color. If you saturate the color by 10%, you get **48.1184, 78.0561, 18.4660**, and if you desaturate by 10%, it is **54.1161, 65.1467, 11.4498**.

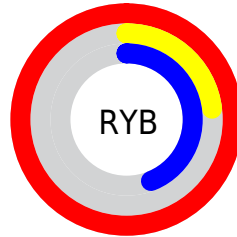
Distribution



Red (100%)

Green (23%)

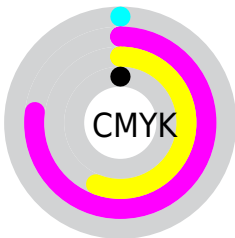
Blue (44%)



Red (100%)

Yellow (23%)

Blue (44%)

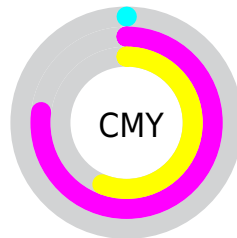


Cyan (0%)

Magenta (77%)

Yellow (56%)

Black (0%)



Cyan (0%)

Magenta (77%)

Yellow (56%)

Brightness & Saturation Gradients

These gradients show how the HunterLab color 50.5328, 72.9018, 14.7692 changes by changing the brightness by 10 percent. The first figure shows a shift by +10% for each color and the second figure -10%.

Similar to the brightness gradients but the following saturation gradients show a change of the HunterLab color 50.5328, 72.9018, 14.7692 by changing the saturation by 10% instead.

■ 50.5328, 72.9018,
14.7692

■ 50.5328, 72.9018,
14.7692

167.4821, 90.8384,
28.5453

■ 40.5927, 70.5221,
13.1237

■ 72.4757, 77.4930,
17.9354

■ 31.4051, 68.1775,
11.4086

■ 84.3960, 79.6688,
19.4779

■ 23.0393, 66.0238,
9.5925

■ 96.9064, 81.7534,
21.0042

■ 15.5857, 64.4692,
7.6349

■ 109.9803, 83.7457,
22.5198

■ 9.1696, 64.8092,
6.4187

■ 123.5944, 85.6475,
24.0288

0.0000, INF, NaN

0.0000, INF, NaN

137.7280, 87.4613,

25.5345

0.0000, NaN, NaN

152.3628, 89.1905,
27.0393

0.0000, NaN, NaN

■ 50.5328, 72.9018,
14.7692

■ 50.5328, 72.9018,
14.7692

■ 48.1184, 78.0561,
18.4660

■ 54.1161, 65.1467,
11.4498

■ 46.8209, 80.2695,
22.1573

■ 58.7947, 55.5883,
8.7510

■ 46.5541, 80.6124,
23.2061

■ 64.4436, 45.0235,
6.7694

■ 70.9210, 34.0606,
5.4873

■ 78.0946, 23.0778,
4.8287

■ 85.8514, 12.2737,
4.6994

■ 94.0994, 1.7311,
5.0087

100.0000, -5.3359,
5.4331

Harmonies

Analogous

The Analogous color harmony consists of three colors that are next to each other on the color wheel.



50.5343, 71.7150, -16.9057



50.5328, 72.9018, 14.7692



50.5343, 50.5584, 28.8837

Triad

The Triadic color harmony groups three colors that are evenly spaced from another and form a triangle on the color wheel.



50.5343, 72.8967, 14.7704



50.5343, -38.7878, 29.5480



50.5343, -19.0467, -93.0324

Complementary

The Complementary color scheme is a pair of colors which are on the opposite of each other on the color wheel.



50.5328, 72.9018, 14.7692



87.6142, -54.8283, 14.7870

Split Complementary

Split-complementary colors differ from the complementary color scheme. The scheme consists of three colors, the original color and two neighbors of the complement color.



50.5343, -40.2484, -57.2930



50.5328, 72.9018, 14.7692



50.5343, -49.5308, 16.7354

Square

The Square scheme is like the rectangle color scheme, but the four colors are evenly spaced on the color wheel.



50.5343, 72.8967, 14.7704



50.5343, -16.4972, 33.0666



50.5343, -49.9879, -13.2175



50.5343, 12.7593, -94.8843

Rectangle

The Rectangle color scheme consists of four colors that form a rectangle on the color wheel.



50.5328, 72.9018, 14.7692



50.5343, 27.9552, 32.2098



50.5343, -49.9879, -13.2175



50.5343, -27.4347, -83.9004

Sweetspot

The Sweet Spot groups the original color and five complimentary colors.



50.5343, 72.8967, 14.7704



81.0227, 18.8835, 4.7213



47.9678, 80.4301, -85.9725



36.2147, 10.5537, 2.2298

0.0000, NaN, NaN



46.2646, -2.4686, 2.5136

Same Dimension

The Same Dimension uses a secret algorithm to generate beautiful new colors.



50.5343, 72.8967, 14.7704



47.3216, 79.5528, 20.3928



56.2380, 50.9374, 31.1809



42.5043, 2.0798, 2.2618



33.6830, 58.3857, 16.3194



10.5916, 18.5178, 3.9027

Inverse Universe

The Inverse Universe completely reimagines the original color for something new.



50.5343, 72.8967, 14.7704



47.3216, 79.5528, 20.3928



73.4055, -24.5747, -31.6128



42.5043, 2.0798, 2.2618



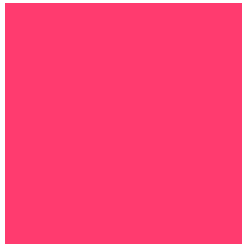
33.6830, 58.3857, 16.3194



10.5916, 18.5178, 3.9027

Previews

White Background



This preview shows how the HunterLab color 50.5328, 72.9018, 14.7692 looks on a white background.

Color Contrast Check

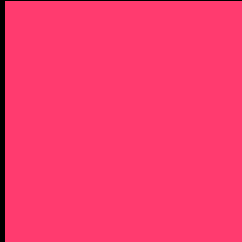
Large Text (above 18pt) WCAG AA ✓ Pass

Any Text WCAG AA × Fail

Large Text (above 18pt) WCAG AAA × Fail

Any Text WCAG AAA × Fail

Black Background



This preview shows how the HunterLab color 50.5328, 72.9018, 14.7692 looks on a black background.

Color Contrast Check

Large Text (above 18pt) WCAG AA ✓ Pass

Any Text WCAG AA ✓ Pass

Large Text (above 18pt) WCAG AAA ✓ Pass

Any Text WCAG AAA × Fail

If you want to check with other color combinations, try the [Color Contrast Checker](#).

HunterLab 50.5328, 72.9018, 14.7692 Background



This preview shows how black text looks on a background with the HunterLab color 50.5328, 72.9018, 14.7692.



This preview shows how white text looks on a background with the HunterLab color 50.5328, 72.9018,

Color Blindness Simulation

Color vision deficiency is a very complex topic, and I could not describe the different causes any better than Wikipedia does, so if you want to learn more, you should check out their [article about color blindness](#).

Dichromacy



Original Color

50.5328, 72.9018, 14.7692

Protanopia

50.7446, -0.8820, -1.9689

Deuteranopia

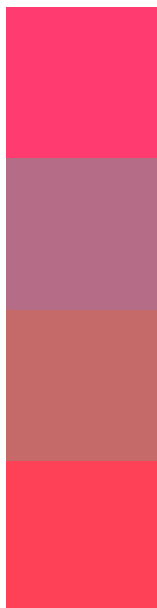
50.6035, 3.3203, 16.8144



Tritanopia

50.4696, 66.2796, 25.2564

Trichromacy



Original Color

50.5328, 72.9018, 14.7692

Protanomaly

47.4450, 25.6922, 1.0410

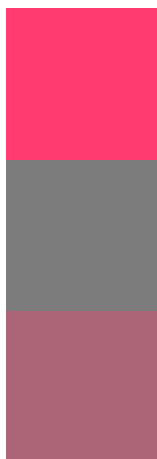
Deuteranomaly

48.1646, 29.5978, 13.7453

Tritanomaly

50.5206, 68.6157, 21.9995

Monochromacy



Original Color

50.5328, 72.9018, 14.7692

Achromatopsia

44.8950, -2.3955, 2.4392

Achromatomaly

43.8371, 24.6761, 3.8392

CSS Examples

Text

The CSS property to change the color of the text to HunterLab 50.5328, 72.9018, 14.7692 is called "color". The color property can be set on classes, ids or directly on the HTML element.

This example shows how text in the color `rgb(255, 59, 111)` looks like.

```
.text, #text, p{  
    color:rgb(255, 59, 111)  
}
```

If you want to add a text shadow in that color use the text-shadow property, you can generate a text shadow directly with our [CSS Text Shadow Generator](#).

Here you see how black text with a 4 pixel rgb(255, 59, 111) colored shadow looks like.

```
.shadow{ text-shadow: 4px 4px 2px rgb(255, 59, 111) }
```

Border

The CSS property to change the border of an element to HunterLab 50.5328, 72.9018, 14.7692 is called "border". The border property can be set on classes, ids or directly on the HTML element.

This example shows the color as border, it can be applied via the CSS property "border" or "border-color".

```
.border, #border, table{ border:4px solid rgb(255, 59, 111) }
```


If only the border color should be changed use the property `border-color`.

```
.border{ border-color:rgb(255, 59, 111) }
```

If you want to add a box shadow in that color use:

Here you see how a box with a 4 pixel `rgb(255, 59, 111)` colored shadow looks like.

```
.boxshadow{ -moz-box-shadow:4px 4px 4px  
4px rgb(255, 59, 111); -webkit-box-  
shadow:4px 4px 4px 4px rgb(255, 59, 111);  
box-shadow:4px 4px 4px 4px rgb(255, 59,  
111) }
```

Background

The CSS property to change the background color of an element to HunterLab 50.5328, 72.9018, 14.7692 is called "background". The background property can be set on classes, ids or directly on the HTML element.

```
.background, #background, body{  
background: rgb(255, 59, 111) }
```

If only the background color should be changed can be used:

```
.background{ background-color: rgb(255, 59,  
111) }
```

This example shows the color as background, it is applied via the CSS property "background".

To optimize and compress your CSS code, you can use our [online CSS compressor and optimizer](#) based on csstidy. If you want to create a linear or radial gradient as background or border, check our [CSS Gradient Generator](#).

Hey! You found this booklet interesting? Support Converting Colors with the new Membership Option!

The pro membership hides all ads, plus gives you double the colors in the color bucket, and more awesome pro features!

[Learn more, Memberships starting at \\$2.50/m!](#)

**Follow me
on Twitter!**

@ConvertingColor