

Converting Colors

HunterLab(50.5371, 76.3537,
7.2594)

Have a look what the booklet for
HunterLab(50.5371, 76.3537,
7.2594) contains.

HunterLab(50.5342, 76.3661, 7.2826)	3
<i>Conversions</i>	4
<i>Details</i>	6
<i>Harmonies</i>	12
<i>Previews</i>	24
<i>Color Blindness Simulation</i>	28
<i>CSS Examples</i>	31

Color

**HunterLab(50.5342, 76.3661,
7.2826)**

Conversions

Conversions Part 1

Format	Color
Hex	FF3683
RGB	255, 54, 131
RGB Percent	100%, 21%, 51%
CMY	0.0000, 0.7882, 0.4863
CMYK	0.00, 0.79, 0.49, 0.00
HSL	337°, 100%, 61%
HSV	337°, 79%, 100%
XYZ	46.6559, 25.5371, 23.9429
YIQ	122.8770, 95.0790, 66.5590

Conversions

Conversions Part 2

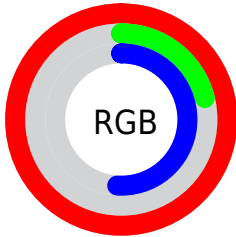
Format	Color
R_{YB}	255, 54, 131
Decimal	16725635
CIE _{Lab}	57.60, 77.20, 6.17
CIE _{LCh}	58, 77.443, 4.572
Yxy	25.5385, 0.4853, 0.2656
Android (android.graphics.Color)	4294915715 (0xFFFF3683)
YUV	122.8770, 4.0046, 115.8719
Hunter-Lab	50.5342, 76.3661, 7.2826

Details

The HunterLab color **50.5342, 76.3661, 7.2826** is a dark color, and the websafe version is hex **FF3399**. The color can be described as middle washed rose. A complement of this color would be **86.9020, -58.9903, 23.7737**, and the grayscale version is **44.4191, -2.3701, 2.4134**.

A 20% lighter version of the original color is **61.7686, 55.4922, -4.4947**, and **34.3739, 60.6386, 8.4737** is the 20% darker color. If you saturate the color by 10%, you get **48.3313, 80.7950, 11.1993**, and if you desaturate by 10%, it is **53.8748, 69.1241, 4.1499**.

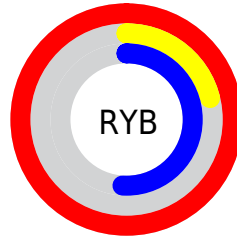
Distribution



Red (100%)

Green (21%)

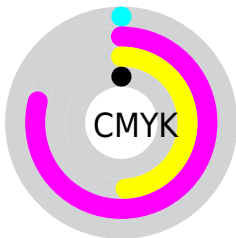
Blue (51%)



Red (100%)

Yellow (21%)

Blue (51%)

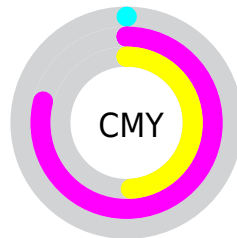


Cyan (0%)

Magenta (79%)

Yellow (49%)

Black (0%)



Cyan (0%)

Magenta (79%)

Yellow (49%)

Brightness & Saturation Gradients

These gradients show how the HunterLab color 50.5342, 76.3661, 7.2826 changes by changing the brightness by 10 percent. The first figure shows a shift by +10% for each color and the second figure -10%.

Similar to the brightness gradients but the following saturation gradients show a change of the HunterLab color 50.5342, 76.3661, 7.2826 by changing the saturation by 10% instead.

50.5342, 76.3661,
7.2826

50.5342, 76.3661,
7.2826

167.4841, 94.9655,
16.0608

40.5940, 73.9409,
6.3909

72.4773, 81.0844,
9.1115

31.4063, 71.5748,
5.5071

84.3976, 83.3328,
10.0497

23.0403, 69.4449,
4.6258

96.9081, 85.4927,
11.0055

15.5866, 68.0082,
3.7346

109.9820, 87.5620,
11.9795

9.1704, 68.7028,
3.2893

123.5962, 89.5415,
12.9719

0.0000, INF, NaN

0.0000, INF, NaN

137.7299, 91.4332,

13.9829

0.0000, NaN, NaN

152.3648, 93.2402,
15.0125

0.0000, NaN, NaN

■ 50.5342, 76.3661,
7.2826

■ 50.5342, 76.3661,
7.2826

■ 48.3313, 80.7950,
11.1993

■ 53.8748, 69.1241,
4.1499

■ 47.1557, 82.3307,
15.4872

■ 58.3024, 59.7967,
1.9899

■ 47.0485, 82.4333,
15.9738

■ 63.7066, 49.1951,
0.8203

■ 69.9531, 37.9850,
0.5453

■ 76.9119, 26.6091,
1.0252

■ 84.4698, 15.3185,
2.1193

■ 92.5326, 4.2332,
3.7055

100.0000, -5.3358,
5.4332

Harmonies

Analogous

The Analogous color harmony consists of three colors that are next to each other on the color wheel.



50.5357, 67.4322, -30.2059



50.5342, 76.3661, 7.2826



50.5357, 60.0953, 26.2623

Triad

The Triadic color harmony groups three colors that are evenly spaced from another and form a triangle on the color wheel.



50.5357, 76.3611, 7.2840



50.5357, -33.6221, 31.3588



50.5357, -26.9337, -86.3929

Complementary

The Complementary color scheme is a pair of colors which are on the opposite of each other on the color wheel.



50.5342, 76.3661, 7.2826



86.9020, -58.9903, 23.7737

Split Complementary

Split-complementary colors differ from the complementary color scheme. The scheme consists of three colors, the original color and two neighbors of the complement color.



50.5357, -44.7067, -44.2370



50.5342, 76.3661, 7.2826



50.5357, -47.8245, 22.2649

Square

The Square scheme is like the rectangle color scheme, but the four colors are evenly spaced on the color wheel.



50.5357, 76.3611, 7.2840



50.5357, -7.6073, 33.4154



50.5357, -51.2957, -2.2456



50.5357, 2.4037, -100.3622

Rectangle

The Rectangle color scheme consists of four colors that form a rectangle on the color wheel.



50.5342, 76.3661, 7.2826



50.5357, 39.0949, 31.2307



50.5357, -51.2957, -2.2456



50.5357, -34.1909, -74.1399

Sweetspot

The Sweet Spot groups the original color and five complimentary colors.



50.5357, 76.3611, 7.2840



80.4841, 21.1500, 1.4836



43.9541, 76.2629, -99.1972



36.0073, 11.6518, 0.5235

0.0000, NaN, NaN



46.2646, -2.4686, 2.5136

Same Dimension

The Same Dimension uses a secret algorithm to generate beautiful new colors.



50.5357, 76.3611, 7.2840



47.5106, 82.0108, 13.8510



51.8647, 62.7090, 29.0646



42.5467, 2.3075, 1.6576



34.0489, 59.7325, 10.9727



10.7207, 18.9910, 2.0321

Inverse Universe

The Inverse Universe completely reimagines the original color for something new.



50.5357, 76.3611, 7.2840



47.5106, 82.0108, 13.8510



80.9110, -35.0322, -20.0829



42.5467, 2.3075, 1.6576



34.0489, 59.7325, 10.9727



10.7207, 18.9910, 2.0321

Previews

White Background



This preview shows how the HunterLab color 50.5342, 76.3661, 7.2826 looks on a white background.

Color Contrast Check

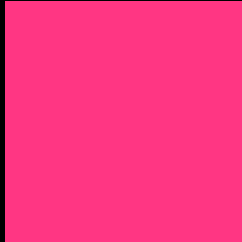
Large Text (above 18pt) WCAG AA ✓ Pass

Any Text WCAG AA × Fail

Large Text (above 18pt) WCAG AAA × Fail

Any Text WCAG AAA × Fail

Black Background



This preview shows how the HunterLab color 50.5342, 76.3661, 7.2826 looks on a black background.

Color Contrast Check

Large Text (above 18pt) WCAG AA ✓ Pass

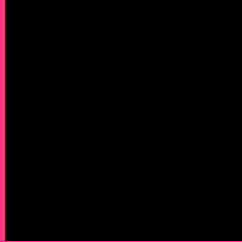
Any Text WCAG AA ✓ Pass

Large Text (above 18pt) WCAG AAA ✓ Pass

Any Text WCAG AAA × Fail

If you want to check with other color combinations, try the [Color Contrast Checker](#).

HunterLab 50.5342, 76.3661, 7.2826 Background



This preview shows how black text looks on a background with the HunterLab color 50.5342, 76.3661, 7.2826.



This preview shows how white text looks on a background with the HunterLab color 50.5342, 76.3661,

Color Blindness Simulation

Color vision deficiency is a very complex topic, and I could not describe the different causes any better than Wikipedia does, so if you want to learn more, you should check out their [article about color blindness](#).

Dichromacy



Original Color

50.5342, 76.3661, 7.2826

Protanopia

50.6506, 2.2264, -17.4401

Deuteranopia

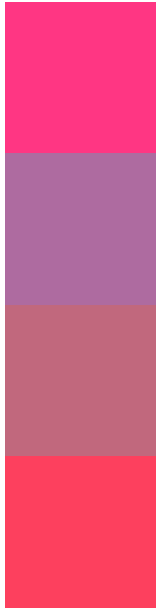
50.4228, 3.5866, 9.8629



Tritanopia

50.5537, 65.2578, 24.9008

Trichromacy



Original Color

50.5342, 76.3661, 7.2826

Protanomaly

46.9597, 28.2754, -12.5589

Deuteranomaly

47.6642, 31.3490, 5.7849

Tritanomaly

50.3563, 69.1274, 19.7711

Monochromacy



Original Color

50.5342, 76.3661, 7.2826

Achromatopsia

44.5050, -2.3747, 2.4180

Achromatomaly

43.4737, 26.2742, 0.3285

CSS Examples

Text

The CSS property to change the color of the text to HunterLab 50.5342, 76.3661, 7.2826 is called "color". The color property can be set on classes, ids or directly on the HTML element.

This example shows how text in the color `rgb(255, 54, 131)` looks like.

```
.text, #text, p{  
    color:rgb(255, 54, 131)  
}
```

If you want to add a text shadow in that color use the text-shadow property, you can generate a text shadow directly with our [CSS Text Shadow Generator](#).

Here you see how black text with a 4 pixel rgb(255, 54, 131) colored shadow looks like.

```
.shadow{ text-shadow: 4px 4px 2px rgb(255, 54, 131) }
```

Border

The CSS property to change the border of an element to HunterLab 50.5342, 76.3661, 7.2826 is called "border". The border property can be set on classes, ids or directly on the HTML element.

This example shows the color as border, it can be applied via the CSS property "border" or "border-color".

```
.border, #border, table{ border:4px solid rgb(255, 54, 131) }
```


If only the border color should be changed use the property `border-color`.

```
.border{ border-color:rgb(255, 54, 131) }
```

If you want to add a box shadow in that color use:

Here you see how a box with a 4 pixel `rgb(255, 54, 131)` colored shadow looks like.

```
.boxshadow{ -moz-box-shadow:4px 4px 4px  
4px rgb(255, 54, 131); -webkit-box-  
shadow:4px 4px 4px 4px rgb(255, 54, 131);  
box-shadow:4px 4px 4px 4px rgb(255, 54,  
131) }
```

Background

The CSS property to change the background color of an element to HunterLab 50.5342, 76.3661, 7.2826 is called "background". The background property can be set on classes, ids or directly on the HTML element.

```
.background, #background, body{  
background: rgb(255, 54, 131) }
```

If only the background color should be changed can be used:

```
.background{ background-color: rgb(255, 54,  
131) }
```

This example shows the color as background, it is applied via the CSS property "background".

To optimize and compress your CSS code, you can use our [online CSS compressor and optimizer](#) based on csstidy. If you want to create a linear or radial gradient as background or border, check our [CSS Gradient Generator](#).

Hey! You found this booklet interesting? Support Converting Colors with the new Membership Option!

The pro membership hides all ads, plus gives you double the colors in the color bucket, and more awesome pro features!

[Learn more, Memberships starting at \\$2.50/m!](#)

**Follow me
on Twitter!**

@ConvertingColor