

Converting Colors

HunterLab(50.5769, 2.4682,
11.8390)

Have a look what the booklet for
HunterLab(50.5769, 2.4682,
11.8390) contains.

HunterLab(50.5769, 2.4682, 11.8390)	3
<i>Conversions</i>	4
<i>Details</i>	6
<i>Harmonies</i>	12
<i>Previews</i>	24
<i>Color Blindness Simulation</i>	28
<i>CSS Examples</i>	31

Color

**HunterLab(50.5769, 2.4682,
11.8390)**

Conversions

Conversions Part 1

Format	Color
Hex	9E8674
RGB	158, 134, 116
RGB Percent	62%, 53%, 45%
CMY	0.3804, 0.4745, 0.5451
CMYK	0.00, 0.15, 0.27, 0.38
HSL	26°, 18%, 54%
HSV	26°, 27%, 62%
XYZ	25.7780, 25.5802, 20.1018
YIQ	139.1240, 20.0820, -0.5100

Conversions

Conversions Part 2

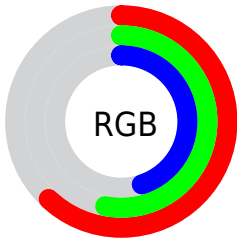
Format	Color
R_{YB}	158, 148, 116
Decimal	10389108
CIE _{Lab}	57.64, 6.25, 13.08
CIE _{LCh}	58, 14.494, 64.464
Yxy	25.5814, 0.3607, 0.3580
Android (android.graphics.Color)	4288579188 (0xFF9E8674)
YUV	139.1240, -11.4001, 16.5543
Hunter-Lab	50.5769, 2.4682, 11.8390

Details

The HunterLab color $50.5769, 2.4682, 11.8390$ is a dark color, and the websafe version is hex 999999 . A complement of this color would be $49.9370, -6.0632, -7.7416$, and the grayscale version is $50.9004, -2.7159, 2.7655$.

A 20% lighter version of the original color is $72.4665, 1.9571, 14.3780$, and $31.3403, 3.0072, 9.0184$ is the 20% darker color. If you saturate the color by 10%, you get $47.8063, 4.9844, 14.5292$, and if you desaturate by 10%, it is $53.4640, 0.1854, 8.8179$.

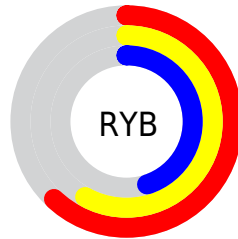
Distribution



Red (62%)

Green (53%)

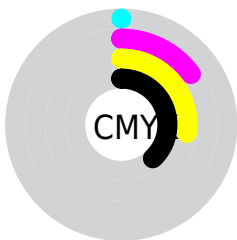
Blue (45%)



Red (62%)

Yellow (58%)

Blue (45%)

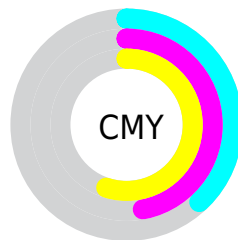


Cyan (0%)

Magenta (15%)

Yellow (27%)

Black (38%)



Cyan (38%)

Magenta (47%)

Yellow (55%)

Brightness & Saturation Gradients

These gradients show how the HunterLab color 50.5769, 2.4682, 11.8390 changes by changing the brightness by 10 percent. The first figure shows a shift by +10% for each color and the second figure -10%.

Similar to the brightness gradients but the following saturation gradients show a change of the HunterLab color 50.5769, 2.4682, 11.8390 by changing the saturation by 10% instead.

■ 50.5769, 2.4682,
11.8390

■ 50.5769, 2.4682,
11.8390

167.5473, -1.3276,
23.4753

■ 40.6334, 2.6487,
10.5183

■ 72.5251, 1.9297,
14.4293

■ 31.4425, 2.7635,
9.1628

■ 84.4479, 1.5858,
15.7125

■ 23.0730, 2.7996,
7.7515

■ 96.9607, 1.1970,
16.9945

■ 15.6153, 2.7406,
6.2474

110.0370, 0.7664,
18.2786

■ 9.1952, 2.5717,
6.3962

123.6533, 0.2965,
19.5670

0.0000, NaN, NaN

0.0000, NaN, NaN

137.7892, -0.2103,

20.8617

0.0000, NaN, NaN

152.4260, -0.7523,
22.1641

0.0000, NaN, NaN

■ 50.5769, 2.4682,
11.8390

■ 50.5769, 2.4682,
11.8390

■ 47.8063, 4.9844,
14.5292

■ 53.4640, 0.1854,
8.8179

■ 45.1604, 7.7526,
16.8432

■ 56.4536, -1.8754,
5.5026

■ 42.6532, 10.7791,
18.7351

■ 59.5379, -3.7334,
1.9277

■ 40.2989, 14.0628,
20.1580

■ 62.7088, -5.4061,
-1.8775

■ 38.1122, 17.5880,
21.0695

■ 65.9590, -6.9104,
-5.8875

■ 36.1081, 21.3187,
21.4418

■ 69.2824, -8.2618,
-10.0809

■ 34.2982, 25.1814,
21.3071

■ 72.6735, -9.4748,
-14.4392

■ 33.7200, 26.4879,
21.2418

■ 76.1275, -10.5624,
-18.9466

■ 79.5093, -12.2648,
-21.7703

Harmonies

Analogous

The Analogous color harmony consists of three colors that are next to each other on the color wheel.



50.5781, 7.3602, 8.6813



50.5769, 2.4682, 11.8390



50.5781, -3.6132, 12.6811

Triad

The Triadic color harmony groups three colors that are evenly spaced from another and form a triangle on the color wheel.



50.5781, 2.4665, 11.8397



50.5781, -13.8958, 1.8749



50.5781, 4.1243, -7.3619

Complementary

The Complementary color scheme is a pair of colors which are on the opposite of each other on the color wheel.



50.5769, 2.4682, 11.8390



49.9370, -6.0632, -7.7416

Split Complementary

Split-complementary colors differ from the complementary color scheme. The scheme consists of three colors, the original color and two neighbors of the complement color.



50.5781, -1.7831, -9.7127



50.5769, 2.4682, 11.8390



50.5781, -12.0333, -3.9927

Square

The Square scheme is like the rectangle color scheme, but the four colors are evenly spaced on the color wheel.



50.5781, 2.4665, 11.8397



50.5781, -12.8776, 7.3403



50.5781, -7.6698, -8.4124



50.5781, 8.3488, -2.3086

Rectangle

The Rectangle color scheme consists of four colors that form a rectangle on the color wheel.



50.5769, 2.4682, 11.8390



50.5781, -7.4782, 11.9108



50.5781, -7.6698, -8.4124



50.5781, 2.2595, -8.5200

Sweetspot

The Sweet Spot groups the original color and five complimentary colors.



50.5781, 2.4665, 11.8397



75.4331, -2.1087, 8.1430



46.5493, 14.8523, -2.9053



35.5381, -0.8162, 4.1796



89.8524, -4.7943, 4.8819



37.4146, -1.9963, 2.0328

Same Dimension

The Same Dimension uses a secret algorithm to generate beautiful new colors.



50.5781, 2.4665, 11.8397



65.8817, 5.3350, 18.2026



56.3975, -7.2534, 17.2541



26.6276, -0.6444, 3.0687



30.3017, 23.3939, 19.0813



4.9645, 1.1317, 3.0789

Inverse Universe

The Inverse Universe completely reimagines the original color for something new.



49.9370, -6.0632, -7.7416



64.8271, -8.6413, -13.9311



44.1530, 3.7117, -16.1657



26.5192, -2.0955, -0.2551



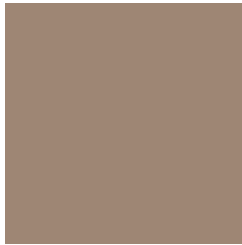
28.1955, 0.8558, -37.0894



4.7446, -1.4086, -2.8896

Previews

White Background



This preview shows how the HunterLab color 50.5769, 2.4682, 11.8390 looks on a white background.

Color Contrast Check

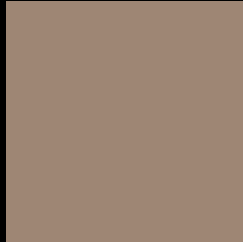
Large Text (above 18pt) WCAG AA ✓ Pass

Any Text WCAG AA × Fail

Large Text (above 18pt) WCAG AAA × Fail

Any Text WCAG AAA × Fail

Black Background



This preview shows how the HunterLab color 50.5769, 2.4682, 11.8390 looks on a black background.

Color Contrast Check

Large Text (above 18pt) WCAG AA ✓ Pass

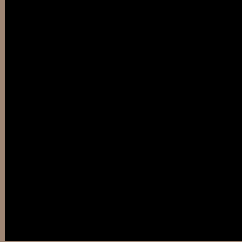
Any Text WCAG AA ✓ Pass

Large Text (above 18pt) WCAG AAA ✓ Pass

Any Text WCAG AAA × Fail

If you want to check with other color combinations, try the [Color Contrast Checker](#).

HunterLab 50.5769, 2.4682, 11.8390 Background



This preview shows how black text looks on a background with the HunterLab color 50.5769, 2.4682, 11.8390.



This preview shows how white text looks on a background with the HunterLab color 50.5769, 2.4682,

Color Blindness Simulation

Color vision deficiency is a very complex topic, and I could not describe the different causes any better than Wikipedia does, so if you want to learn more, you should check out their [article about color blindness](#).

Dichromacy



Original Color

50.5769, 2.4682, 11.8390

Protanopia

50.5924, -3.1102, 11.0343

Deuteranopia

50.5070, 3.6321, 11.7895



Tritanopia

50.4633, 8.9216, 1.6444

Trichromacy



Original Color

50.5769, 2.4682, 11.8390

Protanomaly

50.6554, -1.4883, 11.4892

Deuteranomaly

50.4053, 3.2907, 11.6817

Tritanomaly

50.3708, 6.7463, 5.4611

Monochromacy



Original Color

50.5769, 2.4682, 11.8390

Achromatopsia

50.8117, -2.7112, 2.7607

Achromatomaly

50.6369, -0.8523, 6.0453

CSS Examples

Text

The CSS property to change the color of the text to HunterLab 50.5769, 2.4682, 11.8390 is called "color". The color property can be set on classes, ids or directly on the HTML element.

This example shows how text in the color `rgb(158, 134, 116)` looks like.

```
.text, #text, p{  
    color:rgb(158, 134, 116)  
}
```

If you want to add a text shadow in that color use the text-shadow property, you can generate a text shadow directly with our [CSS Text Shadow Generator](#).

Here you see how black text with a 4 pixel rgb(158, 134, 116) colored shadow looks like.

```
.shadow{ text-shadow: 4px 4px 2px rgb(158, 134, 116) }
```

Border

The CSS property to change the border of an element to HunterLab 50.5769, 2.4682, 11.8390 is called "border". The border property can be set on classes, ids or directly on the HTML element.

This example shows the color as border, it can be applied via the CSS property "border" or "border-color".

```
.border, #border, table{ border:4px solid rgb(158, 134, 116) }
```


If only the border color should be changed use the property `border-color`.

```
.border{ border-color:rgb(158, 134, 116) }
```

If you want to add a box shadow in that color use:

Here you see how a box with a 4 pixel `rgb(158, 134, 116)` colored shadow looks like.

```
.boxshadow{ -moz-box-shadow:4px 4px 4px 4px rgb(158, 134, 116); -webkit-box-shadow:4px 4px 4px 4px rgb(158, 134, 116); box-shadow:4px 4px 4px 4px rgb(158, 134, 116) }
```

Background

The CSS property to change the background color of an element to HunterLab 50.5769, 2.4682, 11.8390 is called "background". The background property can be set on classes, ids or directly on the HTML element.

```
.background, #background, body{  
background: rgb(158, 134, 116) }
```

If only the background color should be changed can be used:

```
.background{ background-color: rgb(158,  
134, 116) }
```

This example shows the color as background, it is applied via the CSS property "background".

To optimize and compress your CSS code, you can use our [online CSS compressor and optimizer](#) based on csstidy. If you want to create a linear or radial gradient as background or border, check our [CSS Gradient Generator](#).

Hey! You found this booklet interesting? Support Converting Colors with the new Membership Option!

The pro membership hides all ads, plus gives you double the colors in the color bucket, and more awesome pro features!

[Learn more, Memberships starting at \\$2.50/m!](#)

**Follow me
on Twitter!**

@ConvertingColor