

Converting Colors

HunterLab(50.6057, 54.7735,
1.1750)

Have a look what the booklet for
HunterLab(50.6057, 54.7735,
1.1750) contains.

HunterLab(50.6482, 54.4576, 1.2749)	3
<i>Conversions</i>	4
<i>Details</i>	6
<i>Harmonies</i>	12
<i>Previews</i>	24
<i>Color Blindness Simulation</i>	28
<i>CSS Examples</i>	31

Color

**HunterLab(50.6482, 54.4576,
1.2749)**

Conversions

Conversions Part 1

Format	Color
Hex	E45990
RGB	228, 89, 144
RGB Percent	89%, 35%, 56%
CMY	0.1059, 0.6509, 0.4353
CMYK	0.00, 0.61, 0.37, 0.11
HSL	336°, 72%, 62%
HSV	336°, 61%, 89%
XYZ	40.6014, 25.6524, 29.1971
YIQ	136.8310, 65.1890, 46.5730

Conversions

Conversions Part 2

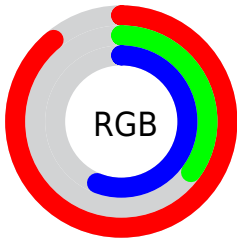
Format	Color
RYB	228, 89, 144
Decimal	14965136
CIELab	57.71, 58.86, -1.89
CIELCh	58, 58.893, 358.161
Yxy	25.6538, 0.4254, 0.2688
Android (android.graphics.Color)	4293155216 (0xFFE45990)
YUV	136.8310, 3.5343, 79.9552
Hunter-Lab	50.6482, 54.4576, 1.2749

Details

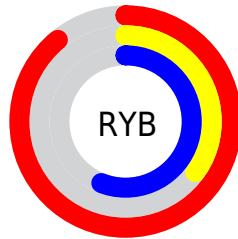
The HunterLab color **50.6482, 54.4576, 1.2749** is a light color, and the websafe version is hex **FF6699**. The color can be described as light muted rose. A complement of this color would be **77.8643, -45.9227, 17.0686**, and the grayscale version is **49.9184, -2.6635, 2.7122**.

A 20% lighter version of the original color is **67.5189, 44.5842, -4.5294**, and **31.4194, 50.3356, 0.2584** is the 20% darker color. If you saturate the color by 10%, you get **46.9387, 62.3628, 3.2403**, and if you desaturate by 10%, it is **55.2278, 45.3057, 0.2038**.

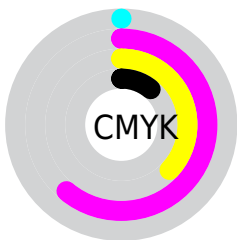
Distribution



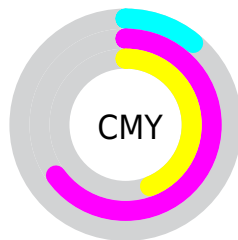
- Red (89%)
- Green (35%)
- Blue (56%)



- Red (89%)
- Yellow (35%)
- Blue (56%)



- Cyan (0%)
- Magenta (61%)
- Yellow (37%)
- Black (11%)



- Cyan (11%)
- Magenta (65%)
- Yellow (44%)

Brightness & Saturation Gradients

These gradients show how the HunterLab color 50.6482, 54.4576, 1.2749 changes by changing the brightness by 10 percent. The first figure shows a shift by +10% for each color and the second figure -10%.

Similar to the brightness gradients but the following saturation gradients show a change of the HunterLab color 50.6482, 54.4576, 1.2749 by changing the saturation by 10% instead.

50.6482, 54.4576,
1.2749

50.6482, 54.4576,
1.2749

167.6539, 68.3311,
6.9369

40.6999, 52.4301,
0.8355

72.6057, 58.2068,
2.2877

31.5035, 50.3344,
0.4438

84.5327, 59.9287,
2.8524

23.1280, 48.2339,
0.1070

97.0495, 61.5510,
3.4530

15.6636, 46.3165,
-0.1665

110.1296, 63.0782,
4.0877

9.2369, 45.2123,
-0.3664

123.7496, 64.5150,
4.7548

0.0000, INF, NaN

0.0000, INF, NaN

137.8890, 65.8664,

5.4529

0.0000, NaN, NaN

152.5293, 67.1370,
6.1806

0.0000, NaN, NaN

■ 50.6482, 54.4576,
1.2749

■ 50.6482, 54.4576,
1.2749

■ 46.9387, 62.3628,
3.2403

■ 55.2278, 45.3057,
0.2038

■ 44.1847, 68.3217,
6.0693

■ 60.5594, 35.5268,
-0.0562

■ 42.4129, 71.7631,
9.5765

■ 66.5307, 25.5374,
0.3724

■ 41.5160, 72.8840,
12.9771

■ 73.0408, 15.5848,
1.3618

■ 80.0054, 5.7928,
2.8002

■ 87.3559, -3.7900,
4.5968

■ 95.0378, -13.1573,
6.6807

■ 97.5627, -13.9718,
2.7711

■ 97.5879, -13.8313,
2.4117

Harmonies

Analogous

The Analogous color harmony consists of three colors that are next to each other on the color wheel.



50.6495, 44.6210, -27.5652



50.6482, 54.4576, 1.2749



50.6495, 46.6864, 19.8611

Triad

The Triadic color harmony groups three colors that are evenly spaced from another and form a triangle on the color wheel.



50.6495, 54.4540, 1.2762



50.6495, -23.3431, 28.6904



50.6495, -25.5302, -53.0618

Complementary

The Complementary color scheme is a pair of colors which are on the opposite of each other on the color wheel.



50.6482, 54.4576, 1.2749



77.8643, -45.9227, 17.0686

Split Complementary

Split-complementary colors differ from the complementary color scheme. The scheme consists of three colors, the original color and two neighbors of the complement color.



50.6495, -38.3260, -23.7320



50.6482, 54.4576, 1.2749



50.6495, -37.2450, 21.3533

Square

The Square scheme is like the rectangle color scheme, but the four colors are evenly spaced on the color wheel.



50.6495, 54.4540, 1.2762



50.6495, -1.1624, 30.3967



50.6495, -42.1656, 4.1944



50.6495, -4.2299, -66.9738

Rectangle

The Rectangle color scheme consists of four colors that form a rectangle on the color wheel.



50.6482, 54.4576, 1.2749



50.6495, 33.2753, 26.2774



50.6495, -42.1656, 4.1944



50.6495, -30.8027, -44.1504

Sweetspot

The Sweet Spot groups the original color and five complimentary colors.



50.6495, 54.4540, 1.2762



85.1296, 14.5029, 1.9645



46.4370, 52.0371, -64.1894



38.3373, 8.2262, 0.7103

0.0000, NaN, NaN



46.2646, -2.4686, 2.5136

Same Dimension

The Same Dimension uses a secret algorithm to generate beautiful new colors.



50.6495, 54.4540, 1.2762



52.4079, 72.7235, 4.3913



51.8628, 42.2286, 21.8902



38.0289, 2.0351, 1.4300



31.5822, 55.5107, 9.3598



8.6888, 15.4684, 1.0517

Inverse Universe

The Inverse Universe completely reimagines the original color for something new.



50.6495, 54.4540, 1.2762



52.4079, 72.7235, 4.3913



74.7462, -30.0376, -12.6889



38.0289, 2.0351, 1.4300



31.5822, 55.5107, 9.3598



8.6888, 15.4684, 1.0517

Previews

White Background



This preview shows how the HunterLab color 50.6482, 54.4576, 1.2749 looks on a white background.

Color Contrast Check

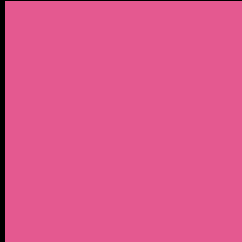
Large Text (above 18pt) WCAG AA ✓ Pass

Any Text WCAG AA × Fail

Large Text (above 18pt) WCAG AAA × Fail

Any Text WCAG AAA × Fail

Black Background



This preview shows how the HunterLab color 50.6482, 54.4576, 1.2749 looks on a black background.

Color Contrast Check

Large Text (above 18pt) WCAG AA ✓ Pass

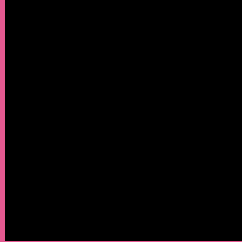
Any Text WCAG AA ✓ Pass

Large Text (above 18pt) WCAG AAA ✓ Pass

Any Text WCAG AAA × Fail

If you want to check with other color combinations, try the [Color Contrast Checker](#).

HunterLab 50.6482, 54.4576, 1.2749 Background



This preview shows how black text looks on a background with the HunterLab color 50.6482, 54.4576, 1.2749.



This preview shows how white text looks on a background with the HunterLab color 50.6482, 54.4576,

Color Blindness Simulation

Color vision deficiency is a very complex topic, and I could not describe the different causes any better than Wikipedia does, so if you want to learn more, you should check out their [article about color blindness](#).

Dichromacy



Original Color

50.6482, 54.4576, 1.2749

Protanopia

51.0078, 1.8354, -15.6799

Deuteranopia

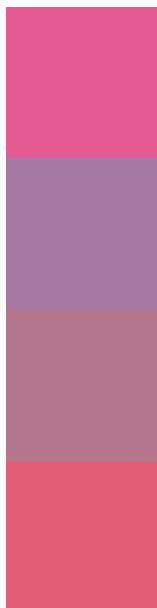
50.8983, 3.2186, 3.8507



Tritanopia

50.5534, 45.0878, 16.5800

Trichromacy



Original Color

50.6482, 54.4576, 1.2749

Protanomaly

49.2141, 19.5780, -11.6445

Deuteranomaly

49.5516, 21.4779, 1.2224

Tritanomaly

50.5035, 48.3880, 11.4780

Monochromacy



Original Color

50.6482, 54.4576, 1.2749

Achromatopsia

50.0158, -2.6687, 2.7175

Achromatomaly

48.8594, 16.8905, 0.2950

CSS Examples

Text

The CSS property to change the color of the text to HunterLab 50.6482, 54.4576, 1.2749 is called "color". The color property can be set on classes, ids or directly on the HTML element.

This example shows how text in the color `rgb(228, 89, 144)` looks like.

```
.text, #text, p{  
    color:rgb(228, 89, 144)  
}
```

If you want to add a text shadow in that color use the text-shadow property, you can generate a text shadow directly with our [CSS Text Shadow Generator](#).

Here you see how black text with a 4 pixel rgb(228, 89, 144) colored shadow looks like.

```
.shadow{ text-shadow: 4px 4px 2px rgb(228, 89, 144) }
```

Border

The CSS property to change the border of an element to HunterLab 50.6482, 54.4576, 1.2749 is called "border". The border property can be set on classes, ids or directly on the HTML element.

This example shows the color as border, it can be applied via the CSS property "border" or "border-color".

```
.border, #border, table{ border:4px solid rgb(228, 89, 144) }
```


If only the border color should be changed use the property `border-color`.

```
.border{ border-color:rgb(228, 89, 144) }
```

If you want to add a box shadow in that color use:

Here you see how a box with a 4 pixel `rgb(228, 89, 144)` colored shadow looks like.

```
.boxshadow{ -moz-box-shadow:4px 4px 4px  
4px rgb(228, 89, 144); -webkit-box-  
shadow:4px 4px 4px 4px rgb(228, 89, 144);  
box-shadow:4px 4px 4px 4px rgb(228, 89,  
144) }
```

Background

The CSS property to change the background color of an element to HunterLab 50.6482, 54.4576, 1.2749 is called "background". The background property can be set on classes, ids or directly on the HTML element.

```
.background, #background, body{  
background: rgb(228, 89, 144) }
```

If only the background color should be changed can be used:

```
.background{ background-color: rgb(228, 89,  
144) }
```

This example shows the color as background, it is applied via the CSS property "background".

To optimize and compress your CSS code, you can use our [online CSS compressor and optimizer](#) based on csstidy. If you want to create a linear or radial gradient as background or border, check our [CSS Gradient Generator](#).

Hey! You found this booklet interesting? Support Converting Colors with the new Membership Option!

The pro membership hides all ads, plus gives you double the colors in the color bucket, and more awesome pro features!

[Learn more, Memberships starting at \\$2.50/m!](#)

**Follow me
on Twitter!**

@ConvertingColor