

Converting Colors

HunterLab(50.6356, 74.9111,
9.8258)

Have a look what the booklet for
HunterLab(50.6356, 74.9111,
9.8258) contains.

HunterLab(50.6625, 74.8392, 9.8221)	3
<i>Conversions</i>	4
<i>Details</i>	6
<i>Harmonies</i>	12
<i>Previews</i>	24
<i>Color Blindness Simulation</i>	28
<i>CSS Examples</i>	31

Color

**HunterLab(50.6625, 74.8392,
9.8221)**

Conversions

Conversions Part 1

Format	Color
Hex	FF397D
RGB	255, 57, 125
RGB Percent	100%, 22%, 49%
CMY	0.0000, 0.7764, 0.5098
CMYK	0.00, 0.78, 0.51, 0.00
HSL	339°, 100%, 61%
HSV	339°, 78%, 100%
XYZ	46.4047, 25.6669, 21.9104
YIQ	123.9540, 96.1800, 63.1240

Conversions

Conversions Part 2

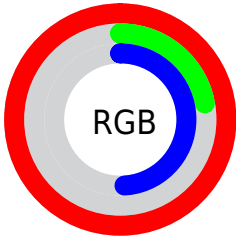
Format	Color
R_{YB}	255, 57, 125
Decimal	16726397
CIE _{Lab}	57.72, 75.95, 9.90
CIE _{LCh}	58, 76.594, 7.430
Yxy	25.6684, 0.4938, 0.2731
Android (android.graphics.Color)	4294916477 (0xFFFF397D)
YUV	123.9540, 0.5157, 114.9273
Hunter-Lab	50.6625, 74.8392, 9.8221

Details

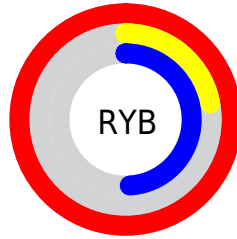
The HunterLab color **50.6625, 74.8392, 9.8221** is a dark color, and the websafe version is hex **FF0066**. The color can be described as middle washed rose. A complement of this color would be **87.1656, -57.4813, 20.7205**, and the grayscale version is **44.8517, -2.3932, 2.4369**.

A 20% lighter version of the original color is **61.9301, 53.4201, -0.7255**, and **34.2670, 60.2469, 10.0216** is the 20% darker color. If you saturate the color by 10%, you get **48.3272, 79.6576, 13.6798**, and if you desaturate by 10%, it is **54.1460, 67.3057, 6.6305**.

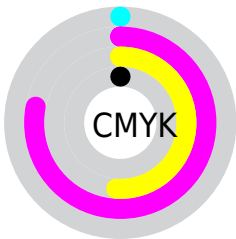
Distribution



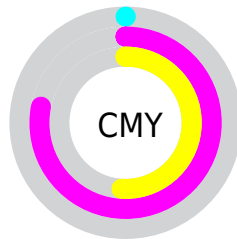
- Red (100%)
- Green (22%)
- Blue (49%)



- Red (100%)
- Yellow (22%)
- Blue (49%)



- Cyan (0%)
- Magenta (78%)
- Yellow (51%)
- Black (0%)



- Cyan (0%)
- Magenta (78%)
- Yellow (51%)

Brightness & Saturation Gradients

These gradients show how the HunterLab color 50.6625, 74.8392, 9.8221 changes by changing the brightness by 10 percent. The first figure shows a shift by +10% for each color and the second figure -10%.

Similar to the brightness gradients but the following saturation gradients show a change of the HunterLab color 50.6625, 74.8392, 9.8221 by changing the saturation by 10% instead.

50.6625, 74.8392,
9.8221

50.6625, 74.8392,
9.8221

167.6754, 93.1351,
20.1262

40.7133, 72.4339,
8.7030

72.6219, 79.4999,
12.0563

31.5158, 70.0751,
7.5693

84.5498, 81.7150,
13.1785

23.1391, 67.9287,
6.4079

97.0674, 83.8403,
14.3084

15.6734, 66.4240,
5.1934

110.1483, 85.8743,
15.4479

9.2453, 66.8899,
4.9440

123.7691, 87.8181,
16.5986

0.0000, INF, NaN

0.0000, INF, NaN

137.9091, 89.6740,

17.7614

0.0000, NaN, NaN

152.5501, 91.4453,
18.9371

0.0000, NaN, NaN

■ 50.6625, 74.8392,
9.8221

■ 50.6625, 74.8392,
9.8221

■ 48.3272, 79.6576,
13.6798

■ 54.1460, 67.3057,
6.6305

■ 47.0688, 81.5173,
17.8166

■ 58.7143, 57.8230,
4.3042

■ 46.8586, 81.7349,
18.7427

■ 64.2501, 47.1946,
2.8803

■ 70.6160, 36.0556,
2.2859

■ 77.6820, 24.8158,
2.4012

■ 85.3359, 13.7002,
3.1011

■ 93.4854, 2.8111,
4.2746

99.9999, -5.3359,
5.4331

Harmonies

Analogous

The Analogous color harmony consists of three colors that are next to each other on the color wheel.



50.6640, 68.4131, -25.5899



50.6625, 74.8392, 9.8221



50.6640, 56.7030, 27.1398

Triad

The Triadic color harmony groups three colors that are evenly spaced from another and form a triangle on the color wheel.



50.6640, 74.8342, 9.8234



50.6640, -35.2199, 30.8267



50.6640, -24.4236, -87.8585

Complementary

The Complementary color scheme is a pair of colors which are on the opposite of each other on the color wheel.



50.6625, 74.8392, 9.8221



87.1656, -57.4813, 20.7205

Split Complementary

Split-complementary colors differ from the complementary color scheme. The scheme consists of three colors, the original color and two neighbors of the complement color.



50.6640, -43.2196, -47.9487



50.6625, 74.8392, 9.8221



50.6640, -48.2747, 20.6077

Square

The Square scheme is like the rectangle color scheme, but the four colors are evenly spaced on the color wheel.



50.6640, 74.8342, 9.8234



50.6640, -10.4957, 33.3327



50.6640, -50.7827, -5.4994



50.6640, 5.5847, -97.8867

Rectangle

The Rectangle color scheme consists of four colors that form a rectangle on the color wheel.



50.6625, 74.8392, 9.8221



50.6640, 35.2846, 31.5655



50.6640, -50.7827, -5.4994



50.6640, -32.0128, -76.6596

Sweetspot

The Sweet Spot groups the original color and five complimentary colors.



50.6640, 74.8342, 9.8234



81.1672, 19.6334, 2.6605



45.3321, 76.9602, -94.4565



36.2917, 10.9483, 1.1326

0.0000, NaN, NaN



46.2646, -2.4686, 2.5136

Same Dimension

The Same Dimension uses a secret algorithm to generate beautiful new colors.



50.6640, 74.8342, 9.8234



47.5332, 80.9958, 15.8947



53.2217, 59.0072, 29.5135



42.5324, 2.2305, 1.8619



33.9091, 59.2191, 13.0074



10.6730, 18.8167, 2.7200

Inverse Universe

The Inverse Universe completely reimagines the original color for something new.



50.6640, 74.8342, 9.8234



47.5332, 80.9958, 15.8947



78.8061, -32.0308, -23.1788



42.5324, 2.2305, 1.8619



33.9091, 59.2191, 13.0074



10.6730, 18.8167, 2.7200

Previews

White Background



This preview shows how the HunterLab color 50.6625, 74.8392, 9.8221 looks on a white background.

Color Contrast Check

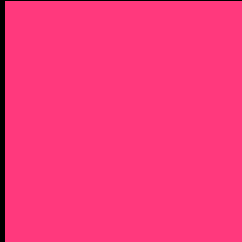
Large Text (above 18pt) WCAG AA ✓ Pass

Any Text WCAG AA × Fail

Large Text (above 18pt) WCAG AAA × Fail

Any Text WCAG AAA × Fail

Black Background



This preview shows how the HunterLab color 50.6625, 74.8392, 9.8221 looks on a black background.

Color Contrast Check

Large Text (above 18pt) WCAG AA ✓ Pass

Any Text WCAG AA ✓ Pass

Large Text (above 18pt) WCAG AAA ✓ Pass

Any Text WCAG AAA × Fail

If you want to check with other color combinations, try the [Color Contrast Checker](#).

HunterLab 50.6625, 74.8392, 9.8221 Background



This preview shows how black text looks on a background with the HunterLab color 50.6625, 74.8392, 9.8221.



This preview shows how white text looks on a background with the HunterLab color 50.6625, 74.8392,

Color Blindness Simulation

Color vision deficiency is a very complex topic, and I could not describe the different causes any better than Wikipedia does, so if you want to learn more, you should check out their [article about color blindness](#).

Dichromacy



Original Color

50.6625, 74.8392, 9.8221

Protanopia

50.9015, 0.9485, -11.7690

Deuteranopia

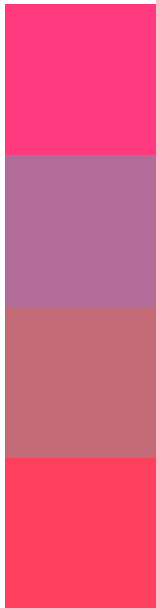
50.8577, 3.3681, 12.4883



Tritanopia

50.5537, 65.2578, 24.9008

Trichromacy



Original Color

50.6625, 74.8392, 9.8221

Protanomaly

47.4883, 26.9071, -7.3551

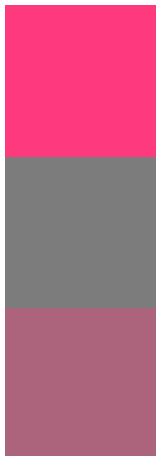
Deuteranomaly

48.2100, 30.3725, 8.7746

Tritanomaly

50.4341, 68.6367, 20.3757

Monochromacy



Original Color

50.6625, 74.8392, 9.8221

Achromatopsia

44.8950, -2.3955, 2.4392

Achromatomaly

43.9775, 25.3579, 1.8344

CSS Examples

Text

The CSS property to change the color of the text to HunterLab 50.6625, 74.8392, 9.8221 is called "color". The color property can be set on classes, ids or directly on the HTML element.

This example shows how text in the color `rgb(255, 57, 125)` looks like.

```
.text, #text, p{  
    color:rgb(255, 57, 125)  
}
```

If you want to add a text shadow in that color use the text-shadow property, you can generate a text shadow directly with our [CSS Text Shadow Generator](#).

Here you see how black text with a 4 pixel rgb(255, 57, 125) colored shadow looks like.

```
.shadow{ text-shadow: 4px 4px 2px rgb(255, 57, 125) }
```

Border

The CSS property to change the border of an element to HunterLab 50.6625, 74.8392, 9.8221 is called "border". The border property can be set on classes, ids or directly on the HTML element.

This example shows the color as border, it can be applied via the CSS property "border" or "border-color".

```
.border, #border, table{ border:4px solid rgb(255, 57, 125) }
```


If only the border color should be changed use the property border-color.

```
.border{ border-color:rgb(255, 57, 125) }
```

If you want to add a box shadow in that color use:

Here you see how a box with a 4 pixel rgb(255, 57, 125) colored shadow looks like.

```
.boxshadow{ -moz-box-shadow:4px 4px 4px  
4px rgb(255, 57, 125); -webkit-box-  
shadow:4px 4px 4px 4px rgb(255, 57, 125);  
box-shadow:4px 4px 4px 4px rgb(255, 57,  
125) }
```

Background

The CSS property to change the background color of an element to HunterLab 50.6625, 74.8392, 9.8221 is called "background". The background property can be set on classes, ids or directly on the HTML element.

```
.background, #background, body{  
background: rgb(255, 57, 125) }
```

If only the background color should be changed can be used:

```
.background{ background-color: rgb(255, 57,  
125) }
```

This example shows the color as background, it is applied via the CSS property "background".

To optimize and compress your CSS code, you can use our [online CSS compressor and optimizer](#) based on csstidy. If you want to create a linear or radial gradient as background or border, check our [CSS Gradient Generator](#).

Hey! You found this booklet interesting? Support Converting Colors with the new Membership Option!

The pro membership hides all ads, plus gives you double the colors in the color bucket, and more awesome pro features!

[Learn more, Memberships starting at \\$2.50/m!](#)

**Follow me
on Twitter!**

@ConvertingColor