

Converting Colors

HunterLab(50.6518, 11.4853,
7.4064)

Have a look what the booklet for
HunterLab(50.6518, 11.4853,
7.4064) contains.

HunterLab(50.6506, 11.4827, 7.5062)	3
<i>Conversions</i>	4
<i>Details</i>	6
<i>Harmonies</i>	12
<i>Previews</i>	24
<i>Color Blindness Simulation</i>	28
<i>CSS Examples</i>	31

Color

**HunterLab(50.6506, 11.4827,
7.5062)**

Conversions

Conversions Part 1

Format	Color
Hex	AB8080
RGB	171, 128, 128
RGB Percent	67%, 50%, 50%
CMY	0.3294, 0.4980, 0.4980
CMYK	0.00, 0.25, 0.25, 0.33
HSL	0°, 20%, 59%
HSV	0°, 25%, 67%
XYZ	28.4101, 25.6548, 23.8766
YIQ	140.8570, 25.6280, 9.1160

Conversions

Conversions Part 2

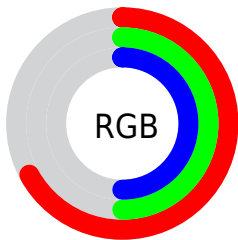
Format	Color
R_{YB}	171, 128, 128
Decimal	11239552
CIE _{Lab}	57.71, 16.60, 6.48
CIE _{LCh}	58, 17.819, 21.318
Yxy	25.6560, 0.3645, 0.3292
Android (android.graphics.Color)	4289429632 (0xFFAB8080)
YUV	140.8570, -6.3385, 26.4354
Hunter-Lab	50.6506, 11.4827, 7.5062

Details

The HunterLab color **50.6506, 11.4827, 7.5062** is a dark color, and the websafe version is hex **996666**. A complement of this color would be **60.5428, -15.0961, -0.6892**, and the grayscale version is **51.5709, -2.7517, 2.8019**.

A 20% lighter version of the original color is **72.6050, 11.9525, 9.2491**, and **31.6355, 10.5326, 5.8146** is the 20% darker color. If you saturate the color by 10%, you get **45.9911, 17.8362, 9.3010**, and if you desaturate by 10%, it is **55.6667, 5.3689, 5.8203**.

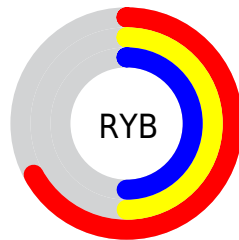
Distribution



Red (67%)

Green (50%)

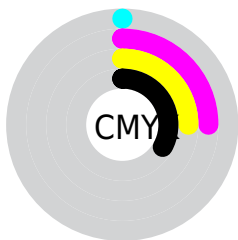
Blue (50%)



Red (67%)

Yellow (50%)

Blue (50%)

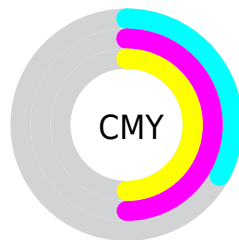


Cyan (0%)

Magenta (25%)

Yellow (25%)

Black (33%)



Cyan (33%)

Magenta (50%)

Yellow (50%)

Brightness & Saturation Gradients

These gradients show how the HunterLab color 50.6506, 11.4827, 7.5062 changes by changing the brightness by 10 percent. The first figure shows a shift by +10% for each color and the second figure -10%.

Similar to the brightness gradients but the following saturation gradients show a change of the HunterLab color 50.6506, 11.4827, 7.5062 by changing the saturation by 10% instead.

■ 50.6506, 11.4827,
7.5062

■ 50.6506, 11.4827,
7.5062

167.6572, 11.5958,
16.4086

■ 40.7020, 11.1214,
6.5957

■ 72.6082, 11.9427,
9.3675

■ 31.5054, 10.6598,
5.6918

■ 84.5353, 12.0634,
10.3207

■ 23.1297, 10.0782,
4.7882

■ 97.0523, 12.1198,
11.2907

■ 15.6651, 9.3529,
3.8714

110.1325, 12.1172,
12.2783

■ 9.2382, 8.4633,
3.4096

123.7526, 12.0600,
13.2837

0.0000, INF, NaN

0.0000, NaN, NaN

137.8921, 11.9520,

14.3071

0.0000, NaN, NaN

152.5325, 11.7963,
15.3488

0.0000, NaN, NaN

■ 50.6506, 11.4827,
7.5062

■ 50.6506, 11.4827,
7.5062

■ 45.9911, 17.8362,
9.3010

■ 55.6667, 5.3689,
5.8203

■ 41.7537, 24.3673,
11.1841

■ 60.9800, -0.4871,
4.2408

■ 38.0219, 30.9100,
13.1076

■ 66.5475, -6.1023,
2.7602

■ 34.8869, 37.1610,
14.9761

■ 72.3340, -11.5039,
1.3670

■ 32.4363, 42.6652,
16.6436

■ 78.3115, -16.7216,
0.0492

■ 30.7293, 46.8957,
17.9377

■ 84.4579, -21.7842,
-1.2045

■ 29.7601, 49.4677,
18.7292

■ 90.7548, -26.7174,
-2.4039

■ 29.4249, 50.3885,
19.0136

■ 93.4869, -28.7924,
-2.8987

Harmonies

Analogous

The Analogous color harmony consists of three colors that are next to each other on the color wheel.



50.6518, 12.3955, 0.6366



50.6506, 11.4827, 7.5062



50.6518, 6.6522, 12.3621

Triad

The Triadic color harmony groups three colors that are evenly spaced from another and form a triangle on the color wheel.



50.6518, 11.4808, 7.5071



50.6518, -13.5058, 10.6225



50.6518, -4.8696, -12.8119

Complementary

The Complementary color scheme is a pair of colors which are on the opposite of each other on the color wheel.



50.6506, 11.4827, 7.5062



60.5428, -15.0961, -0.6892

Split Complementary

Split-complementary colors differ from the complementary color scheme. The scheme consists of three colors, the original color and two neighbors of the complement color.



50.6518, -11.4294, -9.1985



50.6506, 11.4827, 7.5062



50.6518, -16.2213, 4.7898

Square

The Square scheme is like the rectangle color scheme, but the four colors are evenly spaced on the color wheel.



50.6518, 11.4808, 7.5071



50.6518, -7.8556, 13.9699



50.6518, -15.4839, -2.5026



50.6518, 2.6592, -11.8032

Rectangle

The Rectangle color scheme consists of four colors that form a rectangle on the color wheel.



50.6506, 11.4827, 7.5062



50.6518, 2.0099, 14.1331



50.6518, -15.4839, -2.5026



50.6518, -7.2542, -12.0804

Sweetspot

The Sweet Spot groups the original color and five complimentary colors.



50.6518, 11.4808, 7.5071



79.4389, 1.6607, 6.2939



51.9970, 18.3933, -11.5699



37.0145, 1.3276, 3.1183



93.2148, -4.9737, 5.0645



40.3295, -2.1519, 2.1912

Same Dimension

The Same Dimension uses a secret algorithm to generate beautiful new colors.



50.6518, 11.4808, 7.5071



64.3624, 19.9071, 11.3221



56.4537, 0.8619, 13.3531



28.3116, 0.9270, 2.3555



25.5481, 43.7493, 16.5085



4.2615, 7.2957, 2.7537

Inverse Universe

The Inverse Universe completely reimagines the original color for something new.



60.5428, -15.0961, -0.6892



80.2644, -22.9986, -1.9146



54.0215, -5.0595, -9.0865



30.1198, -3.8984, 0.8682



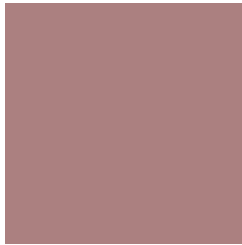
49.1623, -26.0610, -5.1905



8.2000, -4.3470, -0.8654

Previews

White Background



This preview shows how the HunterLab color 50.6506, 11.4827, 7.5062 looks on a white background.

Color Contrast Check

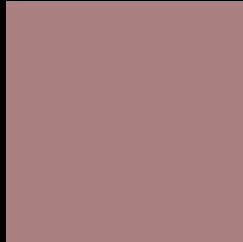
Large Text (above 18pt) WCAG AA ✓ Pass

Any Text WCAG AA × Fail

Large Text (above 18pt) WCAG AAA × Fail

Any Text WCAG AAA × Fail

Black Background



This preview shows how the HunterLab color 50.6506, 11.4827, 7.5062 looks on a black background.

Color Contrast Check

Large Text (above 18pt) WCAG AA ✓ Pass

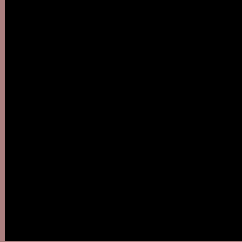
Any Text WCAG AA ✓ Pass

Large Text (above 18pt) WCAG AAA ✓ Pass

Any Text WCAG AAA × Fail

If you want to check with other color combinations, try the [Color Contrast Checker](#).

HunterLab 50.6506, 11.4827, 7.5062 Background



This preview shows how black text looks on a background with the HunterLab color 50.6506, 11.4827, 7.5062.



This preview shows how white text looks on a background with the HunterLab color 50.6506, 11.4827,

Color Blindness Simulation

Color vision deficiency is a very complex topic, and I could not describe the different causes any better than Wikipedia does, so if you want to learn more, you should check out their [article about color blindness](#).

Dichromacy



Original Color

50.6506, 11.4827, 7.5062

Protanopia

50.7325, -1.8082, 4.8707

Deuteranopia

50.7450, 3.5697, 7.8716



Tritanopia

50.7218, 13.4576, 4.2628

Trichromacy



Original Color

50.6506, 11.4827, 7.5062

Protanomaly

50.4861, 2.9634, 5.5246

Deuteranomaly

50.7112, 6.2315, 7.8817

Tritanomaly

50.6388, 13.0290, 5.4501

Monochromacy



Original Color

50.6506, 11.4827, 7.5062

Achromatopsia

51.6097, -2.7538, 2.8041

Achromatomaly

51.0503, 2.2612, 4.4444

CSS Examples

Text

The CSS property to change the color of the text to HunterLab 50.6506, 11.4827, 7.5062 is called "color". The color property can be set on classes, ids or directly on the HTML element.

This example shows how text in the color `rgb(171, 128, 128)` looks like.

```
.text, #text, p{  
    color:rgb(171, 128, 128)  
}
```

If you want to add a text shadow in that color use the text-shadow property, you can generate a text shadow directly with our [CSS Text Shadow Generator](#).

Here you see how black text with a 4 pixel rgb(171, 128, 128) colored shadow looks like.

```
.shadow{ text-shadow: 4px 4px 2px rgb(171, 128, 128) }
```

Border

The CSS property to change the border of an element to HunterLab 50.6506, 11.4827, 7.5062 is called "border". The border property can be set on classes, ids or directly on the HTML element.

This example shows the color as border, it can be applied via the CSS property "border" or "border-color".

```
.border, #border, table{ border:4px solid rgb(171, 128, 128) }
```


If only the border color should be changed use the property `border-color`.

```
.border{ border-color:rgb(171, 128, 128) }
```

If you want to add a box shadow in that color use:

Here you see how a box with a 4 pixel `rgb(171, 128, 128)` colored shadow looks like.

```
.boxshadow{ -moz-box-shadow:4px 4px 4px  
4px rgb(171, 128, 128); -webkit-box-  
shadow:4px 4px 4px 4px rgb(171, 128, 128);  
box-shadow:4px 4px 4px 4px rgb(171, 128,  
128) }
```

Background

The CSS property to change the background color of an element to HunterLab 50.6506, 11.4827, 7.5062 is called "background". The background property can be set on classes, ids or directly on the HTML element.

```
.background, #background, body{  
background: rgb(171, 128, 128) }
```

If only the background color should be changed can be used:

```
.background{ background-color: rgb(171,  
128, 128) }
```

This example shows the color as background, it is applied via the CSS property "background".

To optimize and compress your CSS code, you can use our [online CSS compressor and optimizer](#) based on csstidy. If you want to create a linear or radial gradient as background or border, check our [CSS Gradient Generator](#).

Hey! You found this booklet interesting? Support Converting Colors with the new Membership Option!

The pro membership hides all ads, plus gives you double the colors in the color bucket, and more awesome pro features!

[Learn more, Memberships starting at \\$2.50/m!](#)

**Follow me
on Twitter!**

@ConvertingColor