

Converting Colors

HunterLab(50.6863, 13.0760,
21.7910)

Have a look what the booklet for
HunterLab(50.6863, 13.0760,
21.7910) contains.

HunterLab(50.6024, 13.3994, 21.8270)	3
<i>Conversions</i>	4
<i>Details</i>	6
<i>Harmonies</i>	12
<i>Previews</i>	24
<i>Color Blindness Simulation</i>	28
<i>CSS Examples</i>	31

Color

**HunterLab(50.6024, 13.3994,
21.8270)**

Conversions

Conversions Part 1

Format	Color
Hex	B97D53
RGB	185, 125, 83
RGB Percent	73%, 49%, 33%
CMY	0.2745, 0.5098, 0.6745
CMYK	0.00, 0.32, 0.55, 0.27
HSL	25°, 42%, 53%
HSV	25°, 55%, 73%
XYZ	28.9025, 25.6060, 11.6027
YIQ	138.1520, 49.2420, -0.3420

Conversions

Conversions Part 2

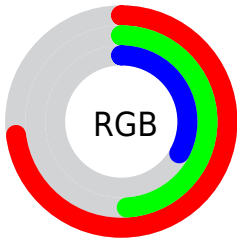
Format	Color
R_{YB}	185, 154, 83
Decimal	12156243
CIE _{Lab}	57.66, 18.72, 32.18
CIE _{LCh}	58, 37.233, 59.813
Yxy	25.6073, 0.4372, 0.3873
Android (android.graphics.Color)	4290346323 (0xFFB97D53)
YUV	138.1520, -27.1899, 41.0857
Hunter-Lab	50.6024, 13.3994, 21.8270

Details

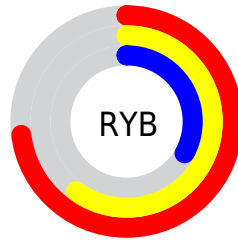
The HunterLab color **50.6024, 13.3994, 21.8270** is a dark color, and the websafe version is hex **CC9966**. A complement of this color would be **49.9854, -8.3899, -23.7887**, and the grayscale version is **50.5659, -2.6981, 2.7473**.

A 20% lighter version of the original color is **72.6411, 14.0792, 26.8958**, and **31.5648, 12.3739, 16.5316** is the 20% darker color. If you saturate the color by 10%, you get **47.6997, 17.4832, 23.5760**, and if you desaturate by 10%, it is **53.7029, 9.6215, 19.5246**.

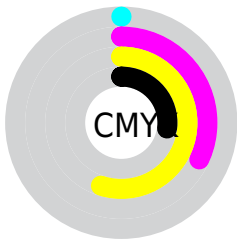
Distribution



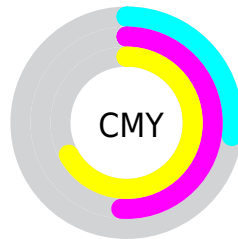
- Red (73%)
- Green (49%)
- Blue (33%)



- Red (73%)
- Yellow (60%)
- Blue (33%)



- Cyan (0%)
- Magenta (32%)
- Yellow (55%)
- Black (27%)



- Cyan (27%)
- Magenta (51%)
- Yellow (67%)

Brightness & Saturation Gradients

These gradients show how the HunterLab color 50.6024, 13.3994, 21.8270 changes by changing the brightness by 10 percent. The first figure shows a shift by +10% for each color and the second figure -10%.

Similar to the brightness gradients but the following saturation gradients show a change of the HunterLab color 50.6024, 13.3994, 21.8270 by changing the saturation by 10% instead.

■ 50.6024, 13.3994,
21.8270

■ 50.6024, 13.3994,
21.8270

167.5855, 14.2918,
42.0786

■ 40.6572, 12.9318,
19.1928

■ 72.5539, 14.0558,
26.7431

■ 31.4643, 12.3589,
16.3912

■ 84.4783, 14.2689,
29.0729

■ 23.0927, 11.6603,
13.3678

■ 96.9925, 14.4141,
31.3400

■ 15.6326, 10.8128,
10.9428

■ 110.0702, 14.4971,
33.5565

■ 9.2102, 9.8047,
6.4471

■ 123.6878, 14.5227,
35.7319

0.0000, INF, NaN

0.0000, NaN, NaN

137.8249, 14.4947,

37.8735

0.0000, NaN, NaN

152.4630, 14.4168,
39.9874

0.0000, NaN, NaN

■ 50.6024, 13.3994,
21.8270

■ 50.6024, 13.3994,
21.8270

■ 47.6997, 17.4832,
23.5760

■ 53.7029, 9.6215,
19.5246

■ 45.0114, 21.8589,
24.7136

■ 56.9787, 6.1599,
16.7274

■ 42.5589, 26.4743,
25.2008

■ 60.4137, 3.0020,
13.4946

■ 40.3612, 31.2414,
25.0376

■ 63.9925, 0.1307,
9.8795

■ 39.3810, 33.5423,
24.8536

■ 67.7015, -2.4748,
5.9293

■ 71.5288, -4.8366,
1.6846

■ 75.4640, -6.9767,
-2.8196

■ 79.4980, -8.9161,
-7.5541

■ 83.6227, -10.6742,
-12.4936

Harmonies

Analogous

The Analogous color harmony consists of three colors that are next to each other on the color wheel.



50.6037, 26.2594, 15.0580



50.6024, 13.3994, 21.8270



50.6037, -2.6043, 23.8857

Triad

The Triadic color harmony groups three colors that are evenly spaced from another and form a triangle on the color wheel.



50.6037, 13.3968, 21.8276



50.6037, -29.5022, 2.8481



50.6037, 13.2057, -29.0526

Complementary

The Complementary color scheme is a pair of colors which are on the opposite of each other on the color wheel.



50.6024, 13.3994, 21.8270



49.9854, -8.3899, -23.7887

Split Complementary

Split-complementary colors differ from the complementary color scheme. The scheme consists of three colors, the original color and two neighbors of the complement color.



50.6037, -2.8012, -35.2223



50.6024, 13.3994, 21.8270



50.6037, -26.3324, -13.7130

Square

The Square scheme is like the rectangle color scheme, but the four colors are evenly spaced on the color wheel.



50.6037, 13.3968, 21.8276



50.6037, -26.2529, 15.1762



50.6037, -17.0115, -28.9053



50.6037, 26.1399, -13.9263

Rectangle

The Rectangle color scheme consists of four colors that form a rectangle on the color wheel.



50.6024, 13.3994, 21.8270



50.6037, -12.5387, 23.0150



50.6037, -17.0115, -28.9053



50.6037, 7.9469, -32.4163

Sweetspot

The Sweet Spot groups the original color and five complimentary colors.



50.6037, 13.3968, 21.8276



84.5982, 0.9676, 14.2983



43.0356, 41.4469, -9.2179



38.8349, 0.7968, 7.0929



96.5975, -5.1542, 5.2483



43.2801, -2.3093, 2.3515

Same Dimension

The Same Dimension uses a secret algorithm to generate beautiful new colors.



50.6037, 13.3968, 21.8276



63.1128, 24.5072, 31.9135



64.4367, -10.6563, 31.9888



30.9894, -0.6617, 3.5735



32.7052, 27.1440, 20.6280



7.0695, 2.9385, 4.4076

Inverse Universe

The Inverse Universe completely reimagines the original color for something new.



49.9854, -8.3899, -23.7887



62.0728, -9.8125, -40.4422



36.3398, 16.2557, -52.2087



30.9413, -2.5252, -0.2926



31.5465, -0.0601, -39.3007



6.8528, -1.4961, -5.3358

Previews

White Background



This preview shows how the HunterLab color 50.6024, 13.3994, 21.8270 looks on a white background.

Color Contrast Check

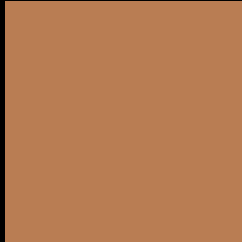
Large Text (above 18pt) WCAG AA ✓ Pass

Any Text WCAG AA × Fail

Large Text (above 18pt) WCAG AAA × Fail

Any Text WCAG AAA × Fail

Black Background



This preview shows how the HunterLab color 50.6024, 13.3994, 21.8270 looks on a black background.

Color Contrast Check

Large Text (above 18pt) WCAG AA ✓ Pass

Any Text WCAG AA ✓ Pass

Large Text (above 18pt) WCAG AAA ✓ Pass

Any Text WCAG AAA × Fail

If you want to check with other color combinations, try the [Color Contrast Checker](#).

HunterLab 50.6024, 13.3994, 21.8270 Background



This preview shows how black text looks on a background with the HunterLab color 50.6024, 13.3994, 21.8270.



This preview shows how white text looks on a background with the HunterLab color 50.6024, 13.3994,

21.8270.

Color Blindness Simulation

Color vision deficiency is a very complex topic, and I could not describe the different causes any better than Wikipedia does, so if you want to learn more, you should check out their [article about color blindness](#).

Dichromacy



Original Color

50.6024, 13.3994, 21.8270

Protanopia

50.7436, -5.2332, 20.3889

Deuteranopia

50.7978, 3.2916, 22.2730



Tritanopia

50.4416, 22.2499, 7.4669

Trichromacy



Original Color

50.6024, 13.3994, 21.8270

Protanomaly

50.5060, 1.0625, 20.8049

Deuteranomaly

50.6837, 7.0440, 22.0163

Tritanomaly

50.4077, 18.9250, 13.3619

Monochromacy



Original Color

50.6024, 13.3994, 21.8270

Achromatopsia

50.4135, -2.6899, 2.7391

Achromatomaly

50.0516, 2.1922, 10.5768

CSS Examples

Text

The CSS property to change the color of the text to HunterLab 50.6024, 13.3994, 21.8270 is called "color". The color property can be set on classes, ids or directly on the HTML element.

This example shows how text in the color `rgb(185, 125, 83)` looks like.

```
.text, #text, p{  
    color:rgb(185, 125, 83)  
}
```

If you want to add a text shadow in that color use the text-shadow property, you can generate a text shadow directly with our [CSS Text Shadow Generator](#).

Here you see how black text with a 4 pixel rgb(185, 125, 83) colored shadow looks like.

```
.shadow{ text-shadow: 4px 4px 2px rgb(185, 125, 83) }
```

Border

The CSS property to change the border of an element to HunterLab 50.6024, 13.3994, 21.8270 is called "border". The border property can be set on classes, ids or directly on the HTML element.

This example shows the color as border, it can be applied via the CSS property "border" or "border-color".

```
.border, #border, table{ border:4px solid rgb(185, 125, 83) }
```


If only the border color should be changed use the property border-color.

```
.border{ border-color:rgb(185, 125, 83) }
```

If you want to add a box shadow in that color use:

Here you see how a box with a 4 pixel rgb(185, 125, 83) colored shadow looks like.

```
.boxshadow{ -moz-box-shadow:4px 4px 4px  
4px rgb(185, 125, 83); -webkit-box-  
shadow:4px 4px 4px 4px rgb(185, 125, 83);  
box-shadow:4px 4px 4px 4px rgb(185, 125,  
83) }
```

Background

The CSS property to change the background color of an element to HunterLab 50.6024, 13.3994, 21.8270 is called "background". The background property can be set on classes, ids or directly on the HTML element.

```
.background, #background, body{  
background: rgb(185, 125, 83) }
```

If only the background color should be changed can be used:

```
.background{ background-color: rgb(185,  
125, 83) }
```

This example shows the color as background, it is applied via the CSS property "background".

To optimize and compress your CSS code, you can use our [online CSS compressor and optimizer](#) based on csstidy. If you want to create a linear or radial gradient as background or border, check our [CSS Gradient Generator](#).

Hey! You found this booklet interesting? Support Converting Colors with the new Membership Option!

The pro membership hides all ads, plus gives you double the colors in the color bucket, and more awesome pro features!

[Learn more, Memberships starting at \\$2.50/m!](#)

**Follow me
on Twitter!**

@ConvertingColor