

Converting Colors

HunterLab(50.7326, 72.0664,
15.3962)

Have a look what the booklet for
HunterLab(50.7326, 72.0664,
15.3962) contains.

HunterLab(50.7181, 72.1640, 15.2706)	3
<i>Conversions</i>	4
<i>Details</i>	6
<i>Harmonies</i>	12
<i>Previews</i>	24
<i>Color Blindness Simulation</i>	28
<i>CSS Examples</i>	31

Color

**HunterLab(50.7181, 72.1640,
15.2706)**

Conversions

Conversions Part 1

Format	Color
Hex	FF3D6E
RGB	255, 61, 110
RGB Percent	100%, 24%, 43%
CMY	0.0000, 0.7607, 0.5686
CMYK	0.00, 0.76, 0.57, 0.00
HSL	345°, 100%, 62%
HSV	345°, 76%, 100%
XYZ	45.7232, 25.7233, 17.3070
YIQ	124.5920, 99.8950, 56.3670

Conversions

Conversions Part 2

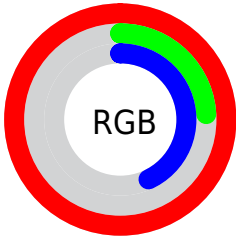
Format	Color
R_{YB}	255, 61, 110
Decimal	16727406
CIE _{Lab}	57.77, 73.78, 18.86
CIE _{LCh}	58, 76.153, 14.338
Yxy	25.7248, 0.5152, 0.2898
Android (android.graphics.Color)	4294917486 (0xFFFF3D6E)
YUV	124.5920, -7.1939, 114.3678
Hunter-Lab	50.7181, 72.1640, 15.2706

Details

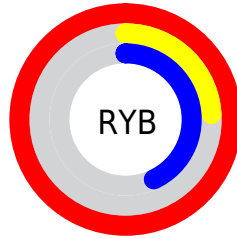
The HunterLab color **50.7181, 72.1640, 15.2706** is a dark color, and the websafe version is hex **FF3366**. The color can be described as middle washed rose. A complement of this color would be **87.7321, -54.1865, 13.6433**, and the grayscale version is **45.1288, -2.4080, 2.4519**.

A 20% lighter version of the original color is **61.8454, 50.1688, 6.6621**, and **33.8160, 58.9722, 13.6245** is the 20% darker color. If you saturate the color by 10%, you get **48.2149, 77.5638, 18.9134**, and if you desaturate by 10%, it is **54.3917, 64.2267, 11.9779**.

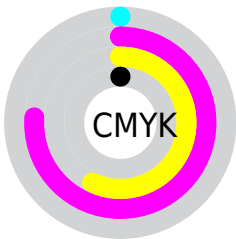
Distribution



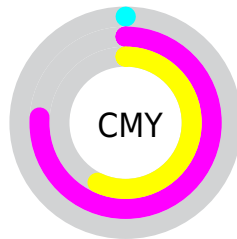
- Red (100%)
- Green (24%)
- Blue (43%)



- Red (100%)
- Yellow (24%)
- Blue (43%)



- Cyan (0%)
- Magenta (76%)
- Yellow (57%)
- Black (0%)



- Cyan (0%)
- Magenta (76%)
- Yellow (57%)

Brightness & Saturation Gradients

These gradients show how the HunterLab color 50.7181, 72.1640, 15.2706 changes by changing the brightness by 10 percent. The first figure shows a shift by +10% for each color and the second figure -10%.

Similar to the brightness gradients but the following saturation gradients show a change of the HunterLab color 50.7181, 72.1640, 15.2706 by changing the saturation by 10% instead.

50.7181, 72.1640,
15.2706

50.7181, 72.1640,
15.2706

167.7583, 89.9337,
29.4133

40.7650, 69.7958,
13.5699

72.6847, 76.7227,
18.5350

31.5633, 67.4556,
11.7942

84.6158, 78.8801,
20.1218

23.1820, 65.2923,
9.9104

97.1365, 80.9455,
21.6900

15.7110, 63.6963,
7.8876

110.2203, 82.9185,
23.2454

9.2775, 63.8745,
6.4943

123.8440, 84.8008,
24.7923

0.0000, INF, NaN

0.0000, INF, NaN

137.9868, 86.5951,

26.3342

0.0000, NaN, NaN

152.6304, 88.3050,
27.8738

0.0000, NaN, NaN

■ 50.7181, 72.1640,
15.2706

■ 50.7181, 72.1640,
15.2706

■ 48.2149, 77.5638,
18.9134

■ 54.3917, 64.2267,
11.9779

■ 46.8440, 80.0244,
22.5324

■ 59.1553, 54.5658,
9.2751

■ 46.5130, 80.4603,
23.8117

■ 64.8804, 43.9684,
7.2589

■ 71.4248, 33.0227,
5.9153

■ 78.6569, 22.0884,
5.1732

■ 86.4650, 11.3502,
4.9433

■ 94.7583, 0.8822,
5.1390

100.0000, -5.3359,
5.4331

Harmonies

Analogous

The Analogous color harmony consists of three colors that are next to each other on the color wheel.



50.7196, 71.5982, -15.8199



50.7181, 72.1640, 15.2706



50.7196, 49.5138, 29.0629

Triad

The Triadic color harmony groups three colors that are evenly spaced from another and form a triangle on the color wheel.



50.7196, 72.1589, 15.2718



50.7196, -39.0874, 29.3825



50.7196, -18.3429, -92.7802

Complementary

The Complementary color scheme is a pair of colors which are on the opposite of each other on the color wheel.



50.7181, 72.1640, 15.2706



87.7321, -54.1865, 13.6433

Split Complementary

Split-complementary colors differ from the complementary color scheme. The scheme consists of three colors, the original color and two neighbors of the complement color.



50.7196, -39.7846, -57.9364



50.7181, 72.1640, 15.2706



50.7196, -49.5642, 16.2094

Square

The Square scheme is like the rectangle color scheme, but the four colors are evenly spaced on the color wheel.



50.7196, 72.1589, 15.2718



50.7196, -17.1285, 33.0787



50.7196, -49.7828, -14.0685



50.7196, 13.5263, -93.6565

Rectangle

The Rectangle color scheme consists of four colors that form a rectangle on the color wheel.



50.7181, 72.1640, 15.2706



50.7196, 26.9363, 32.3092



50.7196, -49.7828, -14.0685



50.7196, -26.8011, -83.9989

Sweetspot

The Sweet Spot groups the original color and five complimentary colors.



50.7196, 72.1589, 15.2718



80.9995, 18.7631, 5.0523



48.2634, 79.8310, -85.0848



36.2024, 10.4905, 2.4055

0.0000, NaN, NaN



46.2646, -2.4686, 2.5136

Same Dimension

The Same Dimension uses a secret algorithm to generate beautiful new colors.



50.7196, 72.1589, 15.2718



47.4058, 79.1431, 20.7254



56.5353, 50.2946, 31.0851



42.4998, 2.0554, 2.3266



33.6521, 58.2717, 16.7733



10.5798, 18.4747, 4.0739

Inverse Universe

The Inverse Universe completely reimagines the original color for something new.



50.7196, 72.1589, 15.2718



47.4058, 79.1431, 20.7254



73.6041, -24.6310, -31.2853



42.4998, 2.0554, 2.3266



33.6521, 58.2717, 16.7733



10.5798, 18.4747, 4.0739

Previews

White Background



This preview shows how the HunterLab color 50.7181, 72.1640, 15.2706 looks on a white background.

Color Contrast Check

Large Text (above 18pt) WCAG AA ✓ Pass

Any Text WCAG AA × Fail

Large Text (above 18pt) WCAG AAA × Fail

Any Text WCAG AAA × Fail

Black Background



This preview shows how the HunterLab color 50.7181, 72.1640, 15.2706 looks on a black background.

Color Contrast Check

Large Text (above 18pt) WCAG AA ✓ Pass

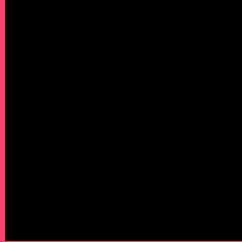
Any Text WCAG AA ✓ Pass

Large Text (above 18pt) WCAG AAA ✓ Pass

Any Text WCAG AAA × Fail

If you want to check with other color combinations, try the [Color Contrast Checker](#).

HunterLab 50.7181, 72.1640, 15.2706 Background



This preview shows how black text looks on a background with the HunterLab color 50.7181, 72.1640, 15.2706.



This preview shows how white text looks on a background with the HunterLab color 50.7181, 72.1640,

Color Blindness Simulation

Color vision deficiency is a very complex topic, and I could not describe the different causes any better than Wikipedia does, so if you want to learn more, you should check out their [article about color blindness](#).

Dichromacy



Original Color

50.7181, 72.1640, 15.2706

Protanopia

50.7666, -0.9309, -0.9724

Deuteranopia

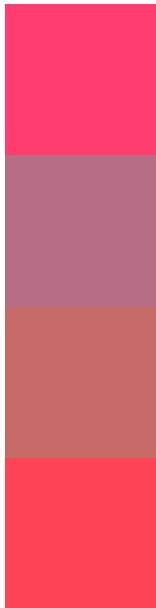
50.7089, 3.6741, 16.9156



Tritanopia

50.7256, 65.5984, 25.2393

Trichromacy



Original Color

50.7181, 72.1640, 15.2706

Protanomaly

47.6412, 25.0405, 1.7257

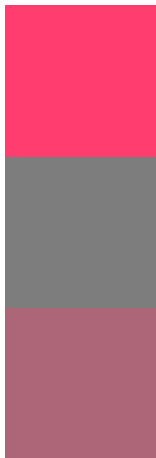
Deuteranomaly

48.4981, 29.3916, 14.3878

Tritanomaly

50.7514, 67.9088, 22.1763

Monochromacy



Original Color

50.7181, 72.1640, 15.2706

Achromatopsia

45.2856, -2.4163, 2.4605

Achromatomaly

44.3052, 23.8116, 3.9383

CSS Examples

Text

The CSS property to change the color of the text to HunterLab 50.7181, 72.1640, 15.2706 is called "color". The color property can be set on classes, ids or directly on the HTML element.

This example shows how text in the color `rgb(255, 61, 110)` looks like.

```
.text, #text, p{  
    color:rgb(255, 61, 110)  
}
```

If you want to add a text shadow in that color use the text-shadow property, you can generate a text shadow directly with our [CSS Text Shadow Generator](#).

Here you see how black text with a 4 pixel rgb(255, 61, 110) colored shadow looks like.

```
.shadow{ text-shadow: 4px 4px 2px rgb(255, 61, 110) }
```

Border

The CSS property to change the border of an element to HunterLab 50.7181, 72.1640, 15.2706 is called "border". The border property can be set on classes, ids or directly on the HTML element.

This example shows the color as border, it can be applied via the CSS property "border" or "border-color".

```
.border, #border, table{ border:4px solid rgb(255, 61, 110) }
```


If only the border color should be changed use the property `border-color`.

```
.border{ border-color:rgb(255, 61, 110) }
```

If you want to add a box shadow in that color use:

Here you see how a box with a 4 pixel `rgb(255, 61, 110)` colored shadow looks like.

```
.boxshadow{ -moz-box-shadow:4px 4px 4px  
4px rgb(255, 61, 110); -webkit-box-  
shadow:4px 4px 4px 4px rgb(255, 61, 110);  
box-shadow:4px 4px 4px 4px rgb(255, 61,  
110) }
```

Background

The CSS property to change the background color of an element to HunterLab 50.7181, 72.1640, 15.2706 is called "background". The background property can be set on classes, ids or directly on the HTML element.

```
.background, #background, body{  
background: rgb(255, 61, 110) }
```

If only the background color should be changed can be used:

```
.background{ background-color: rgb(255, 61,  
110) }
```

This example shows the color as background, it is applied via the CSS property "background".

To optimize and compress your CSS code, you can use our [online CSS compressor and optimizer](#) based on csstidy. If you want to create a linear or radial gradient as background or border, check our [CSS Gradient Generator](#).

Hey! You found this booklet interesting? Support Converting Colors with the new Membership Option!

The pro membership hides all ads, plus gives you double the colors in the color bucket, and more awesome pro features!

[Learn more, Memberships starting at \\$2.50/m!](#)

**Follow me
on Twitter!**

@ConvertingColor