

Converting Colors

HunterLab(50.7509, 9.7066,
23.8738)

Have a look what the booklet for
HunterLab(50.7509, 9.7066,
23.8738) contains.

HunterLab(50.7509, 9.7066, 23.8738)	3
<i>Conversions</i>	4
<i>Details</i>	6
<i>Harmonies</i>	12
<i>Previews</i>	24
<i>Color Blindness Simulation</i>	28
<i>CSS Examples</i>	31

Color

**HunterLab(50.7509, 9.7066,
23.8738)**

Conversions

Conversions Part 1

Format	Color
Hex	B5804A
RGB	181, 128, 74
RGB Percent	71%, 50%, 29%
CMY	0.2902, 0.4980, 0.7098
CMYK	0.00, 0.29, 0.59, 0.29
HSL	30°, 42%, 50%
HSV	30°, 59%, 71%
XYZ	28.0113, 25.7565, 9.9737
YIQ	137.6910, 48.9220, -5.5580

Conversions

Conversions Part 2

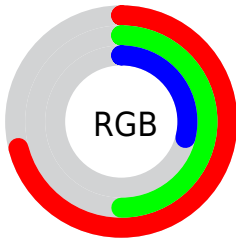
Format	Color
RYB	179, 181, 74
Decimal	11894858
CIELab	57.81, 14.61, 37.09
CIElCh	58, 39.868, 68.505
Yxy	25.7578, 0.4394, 0.4041
Android (android.graphics.Color)	4290084938 (0xFFB5804A)
YUV	137.6910, -31.3997, 37.9820
Hunter-Lab	50.7509, 9.7066, 23.8738

Details

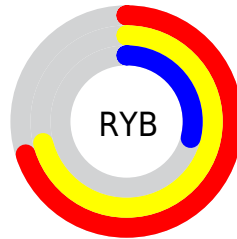
The HunterLab color **50.7509, 9.7066, 23.8738** is a dark color, and the websafe version is hex **CC9966**. A complement of this color would be **44.6876, -3.2945, -30.5221**, and the grayscale version is **50.3988, -2.6892, 2.7383**.

A 20% lighter version of the original color is **72.8205, 10.0713, 29.5223**, and **31.6719, 9.1126, 17.7345** is the 20% darker color. If you saturate the color by 10%, you get **48.2820, 12.9934, 25.3997**, and if you desaturate by 10%, it is **53.3675, 6.7265, 21.7278**.

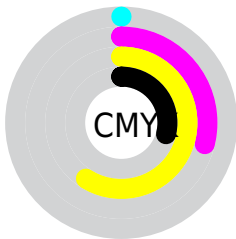
Distribution



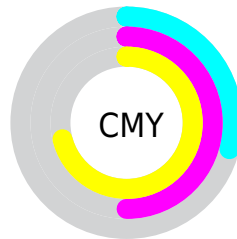
- Red (71%)
- Green (50%)
- Blue (29%)



- Red (70%)
- Yellow (71%)
- Blue (29%)



- Cyan (0%)
- Magenta (29%)
- Yellow (59%)
- Black (29%)



- Cyan (29%)
- Magenta (50%)
- Yellow (71%)

Brightness & Saturation Gradients

These gradients show how the HunterLab color 50.7509, 9.7066, 23.8738 changes by changing the brightness by 10 percent. The first figure shows a shift by +10% for each color and the second figure -10%.

Similar to the brightness gradients but the following saturation gradients show a change of the HunterLab color 50.7509, 9.7066, 23.8738 by changing the saturation by 10% instead.

■ 50.7509, 9.7066,
23.8738

■ 50.7509, 9.7066,
23.8738

167.8068, 9.0767,
46.4588

■ 40.7953, 9.4463,
20.8881

■ 72.7214, 9.9776,
29.4184

■ 31.5911, 9.0920,
17.7055

■ 84.6544, 10.0103,
32.0322

■ 23.2071, 8.6242,
14.3074

■ 97.1770, 9.9822,
34.5668

■ 15.7330, 8.0193,
11.0131

■ 110.2625, 9.8981,
37.0363

■ 9.2964, 7.2486,
6.5074

■ 123.8878, 9.7624,
39.4522

0.0000, INF, NaN

0.0000, NaN, NaN

138.0322, 9.5783,

41.8232

0.0000, NaN, NaN

152.6774, 9.3489,
44.1568

0.0000, NaN, NaN

■ 50.7509, 9.7066,
23.8738

■ 50.7509, 9.7066,
23.8738

■ 48.2820, 12.9934,
25.3997

■ 53.3675, 6.7265,
21.7278

■ 45.9680, 16.5828,
26.2720

■ 56.1172, 4.0595,
19.0035

■ 43.8202, 20.4425,
26.4830

■ 58.9909, 1.6937,
15.7492

■ 41.8413, 24.4916,
26.1460

■ 61.9788, -0.3855,
12.0130

■ 41.6730, 24.8495,
26.1138

■ 65.0719, -2.1956,
7.8406

■ 68.2621, -3.7555,
3.2743

■ 71.5421, -5.0840,
-1.6476

■ 74.9051, -6.1996,
-6.8908

■ 78.3452, -7.1198,
-12.4251

Harmonies

Analogous

The Analogous color harmony consists of three colors that are next to each other on the color wheel.



50.7522, 25.1876, 18.4382



50.7509, 9.7066, 23.8738



50.7522, -7.4101, 24.7563

Triad

The Triadic color harmony groups three colors that are evenly spaced from another and form a triangle on the color wheel.



50.7522, 9.7041, 23.8744



50.7522, -30.9225, -2.0059



50.7522, 19.0566, -27.7269

Complementary

The Complementary color scheme is a pair of colors which are on the opposite of each other on the color wheel.



50.7509, 9.7066, 23.8738



44.6876, -3.2945, -30.5221

Split Complementary

Split-complementary colors differ from the complementary color scheme. The scheme consists of three colors, the original color and two neighbors of the complement color.



50.7522, 2.1661, -38.1047



50.7509, 9.7066, 23.8738



50.7522, -25.6404, -20.3921

Square

The Square scheme is like the rectangle color scheme, but the four colors are evenly spaced on the color wheel.



50.7522, 9.7041, 23.8744



50.7522, -29.4554, 12.8006



50.7522, -14.0362, -35.0540



50.7522, 31.0582, -9.8662

Rectangle

The Rectangle color scheme consists of four colors that form a rectangle on the color wheel.



50.7509, 9.7066, 23.8738



50.7522, -17.2541, 23.0573



50.7522, -14.0362, -35.0540



50.7522, 13.6805, -32.4331

Sweetspot

The Sweet Spot groups the original color and five complimentary colors.



50.7522, 9.7041, 23.8744



83.2768, -0.7263, 15.6430



40.3322, 41.6924, -4.1861



38.1733, 0.0123, 7.9756



95.4677, -5.0939, 5.1869



42.2927, -2.2566, 2.2978

Same Dimension

The Same Dimension uses a secret algorithm to generate beautiful new colors.



50.7522, 9.7041, 23.8744



63.6409, 18.8225, 34.4447



65.8527, -15.4493, 34.4745



30.3157, -1.0084, 3.6963



34.8010, 20.1712, 21.7973



7.0543, 1.7141, 4.3768

Inverse Universe

The Inverse Universe completely reimagines the original color for something new.



44.6876, -3.2945, -30.5221



54.0259, -0.9924, -52.6502



31.1285, 23.5888, -63.6707



29.8364, -2.0916, -0.5422



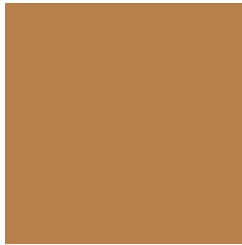
27.2733, 6.7183, -48.5921



5.9232, -0.7176, -5.8544

Previews

White Background



This preview shows how the HunterLab color 50.7509, 9.7066, 23.8738 looks on a white background.

Color Contrast Check

Large Text (above 18pt) WCAG AA ✓ Pass

Any Text WCAG AA × Fail

Large Text (above 18pt) WCAG AAA × Fail

Any Text WCAG AAA × Fail

Black Background



This preview shows how the HunterLab color 50.7509, 9.7066, 23.8738 looks on a black background.

Color Contrast Check

Large Text (above 18pt) WCAG AA ✓ Pass

Any Text WCAG AA ✓ Pass

Large Text (above 18pt) WCAG AAA ✓ Pass

Any Text WCAG AAA × Fail

If you want to check with other color combinations, try the [Color Contrast Checker](#).

HunterLab 50.7509, 9.7066, 23.8738 Background



This preview shows how black text looks on a background with the HunterLab color 50.7509, 9.7066, 23.8738.



This preview shows how white text looks on a background with the HunterLab color 50.7509, 9.7066,

Color Blindness Simulation

Color vision deficiency is a very complex topic, and I could not describe the different causes any better than Wikipedia does, so if you want to learn more, you should check out their [article about color blindness](#).

Dichromacy



Original Color

50.7509, 9.7066, 23.8738

Protanopia

50.7815, -5.4038, 22.7813

Deuteranopia

50.9058, 3.4322, 24.0865



Tritanopia

50.6238, 20.5089, 6.4046

Trichromacy



Original Color

50.7509, 9.7066, 23.8738

Protanomaly

50.6461, -0.1394, 22.9860

Deuteranomaly

50.8209, 5.8899, 24.0649

Tritanomaly

50.7262, 16.0546, 14.2960

Monochromacy



Original Color

50.7509, 9.7066, 23.8738

Achromatopsia

50.4135, -2.6899, 2.7391

Achromatomaly

50.1578, 1.0011, 11.7517

CSS Examples

Text

The CSS property to change the color of the text to HunterLab 50.7509, 9.7066, 23.8738 is called "color". The color property can be set on classes, ids or directly on the HTML element.

This example shows how text in the color `rgb(181, 128, 74)` looks like.

```
.text, #text, p{  
    color:rgb(181, 128, 74)  
}
```

If you want to add a text shadow in that color use the text-shadow property, you can generate a text shadow directly with our [CSS Text Shadow Generator](#).

Here you see how black text with a 4 pixel rgb(181, 128, 74) colored shadow looks like.

```
.shadow{ text-shadow: 4px 4px 2px rgb(181, 128, 74) }
```

Border

The CSS property to change the border of an element to HunterLab 50.7509, 9.7066, 23.8738 is called "border". The border property can be set on classes, ids or directly on the HTML element.

This example shows the color as border, it can be applied via the CSS property "border" or "border-color".

```
.border, #border, table{ border:4px solid rgb(181, 128, 74) }
```


If only the border color should be changed use the property border-color.

```
.border{ border-color:rgb(181, 128, 74) }
```

If you want to add a box shadow in that color use:

Here you see how a box with a 4 pixel rgb(181, 128, 74) colored shadow looks like.

```
.boxshadow{ -moz-box-shadow:4px 4px 4px  
4px rgb(181, 128, 74); -webkit-box-  
shadow:4px 4px 4px 4px rgb(181, 128, 74);  
box-shadow:4px 4px 4px 4px rgb(181, 128,  
74) }
```

Background

The CSS property to change the background color of an element to HunterLab 50.7509, 9.7066, 23.8738 is called "background". The background property can be set on classes, ids or directly on the HTML element.

```
.background, #background, body{  
background: rgb(181, 128, 74) }
```

If only the background color should be changed can be used:

```
.background{ background-color: rgb(181,  
128, 74) }
```

This example shows the color as background, it is applied via the CSS property "background".

To optimize and compress your CSS code, you can use our [online CSS compressor and optimizer](#) based on csstidy. If you want to create a linear or radial gradient as background or border, check our [CSS Gradient Generator](#).

Hey! You found this booklet interesting? Support Converting Colors with the new Membership Option!

The pro membership hides all ads, plus gives you double the colors in the color bucket, and more awesome pro features!

[Learn more, Memberships starting at \\$2.50/m!](#)

**Follow me
on Twitter!**

@ConvertingColor