

Converting Colors

HunterLab(50.7660, 14.2420,
19.4363)

Have a look what the booklet for
HunterLab(50.7660, 14.2420,
19.4363) contains.

HunterLab(50.7660, 14.2420, 19.4363)	3
<i>Conversions</i>	4
<i>Details</i>	6
<i>Harmonies</i>	12
<i>Previews</i>	24
<i>Color Blindness Simulation</i>	28
<i>CSS Examples</i>	31

Color

**HunterLab(50.7660, 14.2420,
19.4363)**

Conversions

Conversions Part 1

Format	Color
Hex	B97D5D
RGB	185, 125, 93
RGB Percent	73%, 49%, 36%
CMY	0.2745, 0.5098, 0.6353
CMYK	0.00, 0.32, 0.50, 0.27
HSL	21°, 40%, 55%
HSV	21°, 50%, 73%
XYZ	29.3170, 25.7719, 13.7853
YIQ	139.2920, 46.0320, 2.7680

Conversions

Conversions Part 2

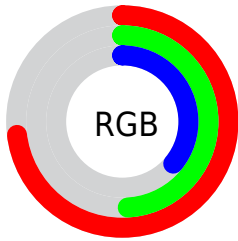
Format	Color
R_{YB}	185, 142, 93
Decimal	12156253
CIE _{Lab}	57.82, 19.64, 26.85
CIE _{LCh}	58, 33.265, 53.820
Yxy	25.7731, 0.4257, 0.3742
Android (android.graphics.Color)	4290346333 (0xFFB97D5D)
YUV	139.2920, -22.8220, 40.0859
Hunter-Lab	50.7660, 14.2420, 19.4363

Details

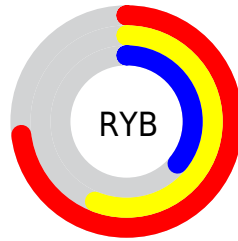
The HunterLab color **50.7660, 14.2420, 19.4363** is a dark color, and the websafe version is hex **CC9966**. A complement of this color would be **53.4894, -11.3071, -18.1143**, and the grayscale version is **51.0043, -2.7215, 2.7712**.

A 20% lighter version of the original color is **72.7386, 14.8342, 23.5738**, and **31.6753, 12.9291, 14.9064** is the 20% darker color. If you saturate the color by 10%, you get **47.5526, 18.7308, 21.4411**, and if you desaturate by 10%, it is **54.2071, 10.0502, 16.9703**.

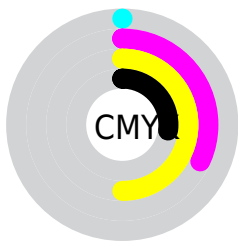
Distribution



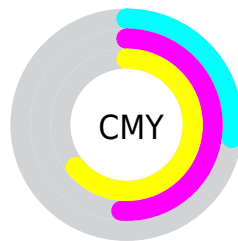
- Red (73%)
- Green (49%)
- Blue (36%)



- Red (73%)
- Yellow (56%)
- Blue (36%)



- Cyan (0%)
- Magenta (32%)
- Yellow (50%)
- Black (27%)



- Cyan (27%)
- Magenta (51%)
- Yellow (64%)

Brightness & Saturation Gradients

These gradients show how the HunterLab color 50.7660, 14.2420, 19.4363 changes by changing the brightness by 10 percent. The first figure shows a shift by +10% for each color and the second figure -10%.

Similar to the brightness gradients but the following saturation gradients show a change of the HunterLab color 50.7660, 14.2420, 19.4363 by changing the saturation by 10% instead.

■ 50.7660, 14.2420,
19.4363

■ 50.7660, 14.2420,
19.4363

167.8293, 15.4583,
37.1895

■ 40.8093, 13.7312,
17.1838

■ 72.7384, 14.9796,
23.6758

■ 31.6040, 13.1133,
14.8004

■ 84.6723, 15.2309,
25.7014

■ 23.2187, 12.3678,
12.2380

■ 97.1957, 15.4130,
27.6825

■ 15.7432, 11.4721,
9.9997

■ 110.2821, 15.5316,
29.6286

■ 9.3051, 10.4080,
6.5135

123.9081, 15.5916,
31.5471

0.0000, INF, NaN

0.0000, NaN, NaN

138.0533, 15.5972,

33.4437

0.0000, NaN, NaN

152.6992, 15.5517,
35.3233

0.0000, NaN, NaN

■ 50.7660, 14.2420,
19.4363

■ 50.7660, 14.2420,
19.4363

■ 47.5526, 18.7308,
21.4411

■ 54.2071, 10.0502,
16.9703

■ 44.5906, 23.4971,
22.9129

■ 57.8474, 6.1664,
14.1071

■ 41.9101, 28.4765,
23.7884

■ 61.6663, 2.5774,
10.9058

■ 39.5396, 33.5608,
24.0277

■ 65.6447, -0.7359,
7.4164

■ 37.4963, 38.5523,
23.7572

■ 69.7661, -3.7963,
3.6801

■ 37.4451, 38.6822,
23.7507

■ 74.0164, -6.6276,
-0.2688

■ 78.3836, -9.2528,
-4.4025

■ 82.8571, -11.6938,
-8.6982

■ 87.2602, -14.9089,
-10.7741

Harmonies

Analogous

The Analogous color harmony consists of three colors that are next to each other on the color wheel.



50.7673, 24.4394, 12.0844



50.7660, 14.2420, 19.4363



50.7673, 0.2296, 22.2476

Triad

The Triadic color harmony groups three colors that are evenly spaced from another and form a triangle on the color wheel.



50.7673, 14.2395, 19.4370



50.7673, -26.8730, 5.4528



50.7673, 8.6650, -26.8132

Complementary

The Complementary color scheme is a pair of colors which are on the opposite of each other on the color wheel.



50.7660, 14.2420, 19.4363



53.4894, -11.3071, -18.1143

Split Complementary

Split-complementary colors differ from the complementary color scheme. The scheme consists of three colors, the original color and two neighbors of the complement color.



50.7673, -5.5872, -29.9971



50.7660, 14.2420, 19.4363



50.7673, -25.1356, -8.7484

Square

The Square scheme is like the rectangle color scheme, but the four colors are evenly spaced on the color wheel.



50.7673, 14.2395, 19.4370



50.7673, -22.7273, 15.7129



50.7673, -17.6943, -22.6613



50.7673, 20.9840, -14.8670

Rectangle

The Rectangle color scheme consists of four colors that form a rectangle on the color wheel.



50.7660, 14.2420, 19.4363



50.7673, -9.0042, 21.9193



50.7673, -17.6943, -22.6613



50.7673, 3.9034, -29.0581

Sweetspot

The Sweet Spot groups the original color and five complimentary colors.



50.7673, 14.2395, 19.4370



84.8891, 1.4173, 12.5453



45.2630, 38.2407, -11.6768



38.9006, 1.0938, 6.2729



96.5975, -5.1542, 5.2483



43.2801, -2.3093, 2.3515

Same Dimension

The Same Dimension uses a secret algorithm to generate beautiful new colors.



50.7673, 14.2395, 19.4370



63.1233, 25.8466, 28.9817



63.0311, -7.5175, 28.9663



30.8375, -0.4039, 3.4081



31.0996, 31.3701, 19.7126



6.7780, 3.5756, 4.2391

Inverse Universe

The Inverse Universe completely reimagines the original color for something new.



53.4894, -11.3071, -18.1143



67.4072, -15.1199, -31.0341



40.7748, 10.3724, -41.4340



31.0973, -2.7794, -0.1041



34.3188, -4.6176, -32.9274



7.2541, -2.0826, -4.5714

Previews

White Background



This preview shows how the HunterLab color 50.7660, 14.2420, 19.4363 looks on a white background.

Color Contrast Check

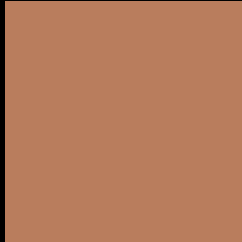
Large Text (above 18pt) WCAG AA ✓ Pass

Any Text WCAG AA × Fail

Large Text (above 18pt) WCAG AAA × Fail

Any Text WCAG AAA × Fail

Black Background



This preview shows how the HunterLab color 50.7660, 14.2420, 19.4363 looks on a black background.

Color Contrast Check

Large Text (above 18pt) WCAG AA ✓ Pass

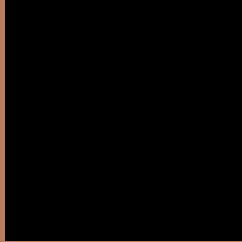
Any Text WCAG AA ✓ Pass

Large Text (above 18pt) WCAG AAA ✓ Pass

Any Text WCAG AAA × Fail

If you want to check with other color combinations, try the [Color Contrast Checker](#).

HunterLab 50.7660, 14.2420, 19.4363 Background



This preview shows how black text looks on a background with the HunterLab color 50.7660, 14.2420, 19.4363.



This preview shows how white text looks on a background with the HunterLab color 50.7660, 14.2420,

19.4363.

Color Blindness Simulation

Color vision deficiency is a very complex topic, and I could not describe the different causes any better than Wikipedia does, so if you want to learn more, you should check out their [article about color blindness](#).

Dichromacy



Original Color

50.7660, 14.2420, 19.4363

Protanopia

50.8430, -4.4967, 17.4850

Deuteranopia

50.7404, 3.4164, 19.7606



Tritanopia

50.7043, 21.8715, 7.3410

Trichromacy



Original Color

50.7660, 14.2420, 19.4363

Protanomaly

50.6950, 2.0815, 18.0478

Deuteranomaly

50.7313, 7.5225, 19.5587

Tritanomaly

50.7394, 18.8754, 12.2883

Monochromacy



Original Color

50.7660, 14.2420, 19.4363

Achromatopsia

50.8117, -2.7112, 2.7607

Achromatomaly

50.5205, 2.5632, 9.5670

CSS Examples

Text

The CSS property to change the color of the text to HunterLab 50.7660, 14.2420, 19.4363 is called "color". The color property can be set on classes, ids or directly on the HTML element.

This example shows how text in the color `rgb(185, 125, 93)` looks like.

```
.text, #text, p{  
    color:rgb(185, 125, 93)  
}
```

If you want to add a text shadow in that color use the text-shadow property, you can generate a text shadow directly with our [CSS Text Shadow Generator](#).

Here you see how black text with a 4 pixel rgb(185, 125, 93) colored shadow looks like.

```
.shadow{ text-shadow: 4px 4px 2px rgb(185, 125, 93) }
```

Border

The CSS property to change the border of an element to HunterLab 50.7660, 14.2420, 19.4363 is called "border". The border property can be set on classes, ids or directly on the HTML element.

This example shows the color as border, it can be applied via the CSS property "border" or "border-color".

```
.border, #border, table{ border:4px solid rgb(185, 125, 93) }
```


If only the border color should be changed use the property border-color.

```
.border{ border-color:rgb(185, 125, 93) }
```

If you want to add a box shadow in that color use:

Here you see how a box with a 4 pixel rgb(185, 125, 93) colored shadow looks like.

```
.boxshadow{ -moz-box-shadow:4px 4px 4px  
4px rgb(185, 125, 93); -webkit-box-  
shadow:4px 4px 4px 4px rgb(185, 125, 93);  
box-shadow:4px 4px 4px 4px rgb(185, 125,  
93) }
```

Background

The CSS property to change the background color of an element to HunterLab 50.7660, 14.2420, 19.4363 is called "background". The background property can be set on classes, ids or directly on the HTML element.

```
.background, #background, body{  
background: rgb(185, 125, 93) }
```

If only the background color should be changed can be used:

```
.background{ background-color: rgb(185,  
125, 93) }
```

This example shows the color as background, it is applied via the CSS property "background".

To optimize and compress your CSS code, you can use our [online CSS compressor and optimizer](#) based on csstidy. If you want to create a linear or radial gradient as background or border, check our [CSS Gradient Generator](#).

Hey! You found this booklet interesting? Support Converting Colors with the new Membership Option!

The pro membership hides all ads, plus gives you double the colors in the color bucket, and more awesome pro features!

[Learn more, Memberships starting at \\$2.50/m!](#)

**Follow me
on Twitter!**

@ConvertingColor