

Converting Colors

HunterLab(50.7965, 52.6039,
11.6436)

Have a look what the booklet for
HunterLab(50.7965, 52.6039,
11.6436) contains.

HunterLab(50.8175, 52.7138, 11.5045)	3
<i>Conversions</i>	4
<i>Details</i>	6
<i>Harmonies</i>	12
<i>Previews</i>	24
<i>Color Blindness Simulation</i>	28
<i>CSS Examples</i>	31

Color

**HunterLab(50.8175, 52.7138,
11.5045)**

Conversions

Conversions Part 1

Format	Color
Hex	E85A78
RGB	232, 90, 120
RGB Percent	91%, 35%, 47%
CMY	0.0902, 0.6470, 0.5294
CMYK	0.00, 0.61, 0.48, 0.09
HSL	347°, 76%, 63%
HSV	347°, 61%, 91%
XYZ	40.3250, 25.8242, 20.6285
YIQ	135.8780, 75.0020, 39.4340

Conversions

Conversions Part 2

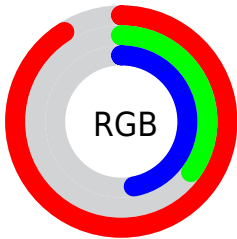
Format	Color
R _Y B	232, 90, 120
Decimal	15227512
CIE Lab	57.87, 57.30, 12.50
CIE LCh	58, 58.645, 12.302
Yxy	25.8256, 0.4647, 0.2976
Android (android.graphics.Color)	4293417592 (0xFFE85A78)
YUV	135.8780, -7.8279, 84.2990
Hunter-Lab	50.8175, 52.7138, 11.5045

Details

The HunterLab color **50.8175, 52.7138, 11.5045** is a dark color, and the websafe version is hex **FF6699**. The color can be described as middle muted rose. A complement of this color would be **80.0948, -42.6968, 7.2402**, and the grayscale version is **49.5810, -2.6455, 2.6938**.

A 20% lighter version of the original color is **66.9301, 40.1306, 7.3701**, and **31.6299, 48.5065, 8.8471** is the 20% darker color. If you saturate the color by 10%, you get **47.0114, 60.7151, 14.2754**, and if you desaturate by 10%, it is **55.5484, 43.5899, 9.2057**.

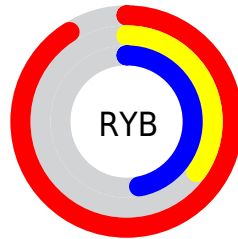
Distribution



Red (91%)

Green (35%)

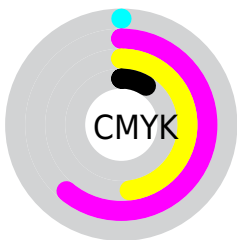
Blue (47%)



Red (91%)

Yellow (35%)

Blue (47%)

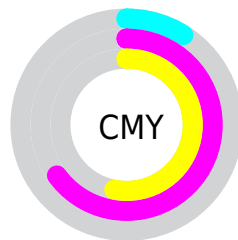


Cyan (0%)

Magenta (61%)

Yellow (48%)

Black (9%)



Cyan (9%)

Magenta (65%)

Yellow (53%)

Brightness & Saturation Gradients

These gradients show how the HunterLab color 50.8175, 52.7138, 11.5045 changes by changing the brightness by 10 percent. The first figure shows a shift by +10% for each color and the second figure -10%.

Similar to the brightness gradients but the following saturation gradients show a change of the HunterLab color 50.8175, 52.7138, 11.5045 by changing the saturation by 10% instead.

■ 50.8175, 52.7138,
11.5045

■ 50.8175, 52.7138,
11.5045

167.9062, 66.1333,
22.8942

■ 40.8573, 50.7313,
10.2222

■ 72.7966, 56.3626,
14.0284

■ 31.6481, 48.6732,
8.9088

■ 84.7335, 58.0330,
15.2817

■ 23.2585, 46.5944,
7.5456

■ 97.2598, 59.6036,
16.5355

■ 15.7782, 44.6631,
6.0979

■ 110.3489, 61.0795,
17.7928

■ 9.3348, 43.4336,
6.0567

123.9777, 62.4655,
19.0559

0.0000, INF, NaN

0.0000, INF, NaN

138.1254, 63.7668,

20.3263

0.0000, NaN, NaN

152.7737, 64.9880,
21.6054

0.0000, NaN, NaN

■ 50.8175, 52.7138,
11.5045

■ 50.8175, 52.7138,
11.5045

■ 47.0114, 60.7151,
14.2754

■ 55.5484, 43.5899,
9.2057

■ 44.2254, 66.8641,
17.3415

■ 61.0737, 33.9718,
7.4351

■ 42.4893, 70.5511,
20.4167

■ 67.2703, 24.2632,
6.1761

■ 41.6864, 71.9212,
22.8126

■ 74.0289, 14.6895,
5.3731

■ 81.2592, 5.3523,
4.9596

■ 88.8884, -3.7194,
4.8720

■ 96.8590, -12.5340,
5.0550

■ 97.9264, -12.6262,
2.8400

Harmonies

Analogous

The Analogous color harmony consists of three colors that are next to each other on the color wheel.



50.8189, 51.0998, -13.0290



50.8175, 52.7138, 11.5045



50.8189, 37.5380, 24.7912

Triad

The Triadic color harmony groups three colors that are evenly spaced from another and form a triangle on the color wheel.



50.8189, 52.7099, 11.5056



50.8189, -30.9672, 26.1651



50.8189, -16.4010, -62.1149

Complementary

The Complementary color scheme is a pair of colors which are on the opposite of each other on the color wheel.



50.8175, 52.7138, 11.5045



80.0948, -42.6968, 7.2402

Split Complementary

Split-complementary colors differ from the complementary color scheme. The scheme consists of three colors, the original color and two neighbors of the complement color.



50.8189, -33.3671, -38.1634



50.8175, 52.7138, 11.5045



50.8189, -40.6016, 14.7045

Square

The Square scheme is like the rectangle color scheme, but the four colors are evenly spaced on the color wheel.



50.8189, 52.7099, 11.5056



50.8189, -12.4715, 30.1114



50.8189, -41.3864, -7.8678



50.8189, 7.8395, -64.4182

Rectangle

The Rectangle color scheme consists of four colors that form a rectangle on the color wheel.



50.8175, 52.7138, 11.5045



50.8189, 21.3789, 28.7559



50.8189, -41.3864, -7.8678



50.8189, -23.0161, -55.9407

Sweetspot

The Sweet Spot groups the original color and five complimentary colors.



50.8189, 52.7099, 11.5056



84.8609, 13.0888, 5.7952



50.5866, 60.9907, -57.2396



38.1934, 7.4751, 2.7616

0.0000, NaN, NaN



46.2646, -2.4686, 2.5136

Same Dimension

The Same Dimension uses a secret algorithm to generate beautiful new colors.



50.8189, 52.7099, 11.5056



51.5598, 69.2810, 16.6149



58.2435, 30.2825, 26.5710



37.9705, 1.7209, 2.2636



31.0842, 53.6767, 16.6436



8.5290, 14.8834, 3.3629

Inverse Universe

The Inverse Universe completely reimagines the original color for something new.



50.8189, 52.7099, 11.5056



51.5598, 69.2810, 16.6149



67.5264, -18.8274, -25.7520



37.9705, 1.7209, 2.2636



31.0842, 53.6767, 16.6436



8.5290, 14.8834, 3.3629

Previews

White Background



This preview shows how the HunterLab color 50.8175, 52.7138, 11.5045 looks on a white background.

Color Contrast Check

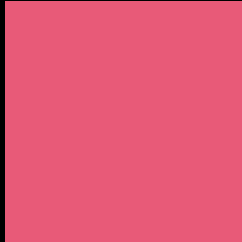
Large Text (above 18pt) WCAG AA ✓ Pass

Any Text WCAG AA × Fail

Large Text (above 18pt) WCAG AAA × Fail

Any Text WCAG AAA × Fail

Black Background



This preview shows how the HunterLab color 50.8175, 52.7138, 11.5045 looks on a black background.

Color Contrast Check

Large Text (above 18pt) WCAG AA ✓ Pass

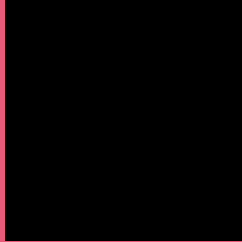
Any Text WCAG AA ✓ Pass

Large Text (above 18pt) WCAG AAA ✓ Pass

Any Text WCAG AAA × Fail

If you want to check with other color combinations, try the [Color Contrast Checker](#).

HunterLab 50.8175, 52.7138, 11.5045 Background



This preview shows how black text looks on a background with the HunterLab color 50.8175, 52.7138, 11.5045.

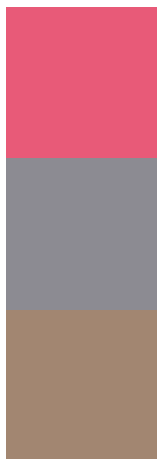


This preview shows how white text looks on a background with the HunterLab color 50.8175, 52.7138,

Color Blindness Simulation

Color vision deficiency is a very complex topic, and I could not describe the different causes any better than Wikipedia does, so if you want to learn more, you should check out their [article about color blindness](#).

Dichromacy



Original Color

50.8175, 52.7138, 11.5045

Protanopia

51.1038, -1.2846, -0.0828

Deuteranopia

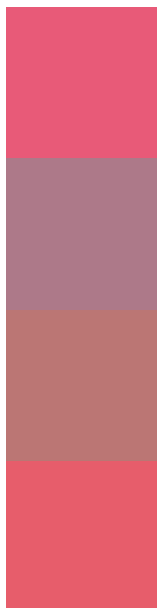
50.9155, 3.4725, 13.2422



Tritanopia

50.9062, 48.5701, 18.1763

Trichromacy



Original Color

50.8175, 52.7138, 11.5045

Protanomaly

49.3610, 16.9923, 2.2860

Deuteranomaly

49.7821, 20.8958, 11.3626

Tritanomaly

50.8716, 49.6552, 16.0043

Monochromacy



Original Color

50.8175, 52.7138, 11.5045

Achromatopsia

49.6187, -2.6475, 2.6959

Achromatomaly

48.4389, 16.2786, 4.2827

CSS Examples

Text

The CSS property to change the color of the text to HunterLab 50.8175, 52.7138, 11.5045 is called "color". The color property can be set on classes, ids or directly on the HTML element.

This example shows how text in the color `rgb(232, 90, 120)` looks like.

```
.text, #text, p{  
  color:rgb(232, 90, 120)  
}
```

If you want to add a text shadow in that color use the text-shadow property, you can generate a text shadow directly with our [CSS Text Shadow Generator](#).

Here you see how black text with a 4 pixel rgb(232, 90, 120) colored shadow looks like.

```
.shadow{ text-shadow: 4px 4px 2px rgb(232, 90, 120) }
```

Border

The CSS property to change the border of an element to HunterLab 50.8175, 52.7138, 11.5045 is called "border". The border property can be set on classes, ids or directly on the HTML element.

This example shows the color as border, it can be applied via the CSS property "border" or "border-color".

```
.border, #border, table{ border:4px solid rgb(232, 90, 120) }
```


If only the border color should be changed use the property border-color.

```
.border{ border-color:rgb(232, 90, 120) }
```

If you want to add a box shadow in that color use:

Here you see how a box with a 4 pixel rgb(232, 90, 120) colored shadow looks like.

```
.boxshadow{ -moz-box-shadow:4px 4px 4px  
4px rgb(232, 90, 120); -webkit-box-  
shadow:4px 4px 4px 4px rgb(232, 90, 120);  
box-shadow:4px 4px 4px 4px rgb(232, 90,  
120) }
```

Background

The CSS property to change the background color of an element to HunterLab 50.8175, 52.7138, 11.5045 is called "background". The background property can be set on classes, ids or directly on the HTML element.

```
.background, #background, body{  
background: rgb(232, 90, 120) }
```

If only the background color should be changed can be used:

```
.background{ background-color: rgb(232, 90,  
120) }
```

This example shows the color as background, it is applied via the CSS property "background".

To optimize and compress your CSS code, you can use our [online CSS compressor and optimizer](#) based on csstidy. If you want to create a linear or radial gradient as background or border, check our [CSS Gradient Generator](#).

Hey! You found this booklet interesting? Support Converting Colors with the new Membership Option!

The pro membership hides all ads, plus gives you double the colors in the color bucket, and more awesome pro features!

[Learn more, Memberships starting at \\$2.50/m!](#)

**Follow me
on Twitter!**

@ConvertingColor