

# Converting Colors

HunterLab(50.8271, 74.8643,  
8.7042)

Have a look what the booklet for  
HunterLab(50.8271, 74.8643,  
8.7042) contains.

<b>HunterLab(50.8376, 74.8284, 8.8184)</b> .....	3
<b><i>Conversions</i></b> .....	4
<b><i>Details</i></b> .....	6
<b><i>Harmonies</i></b> .....	12
<b><i>Previews</i></b> .....	24
<b><i>Color Blindness Simulation</i></b> .....	28
<b><i>CSS Examples</i></b> .....	31

# Color

**HunterLab(50.8376, 74.8284,  
8.8184)**

# Conversions

## Conversions Part 1

<b>Format</b>	<b>Color</b>
Hex	FF3A80
RGB	255, 58, 128
RGB Percent	100%, 23%, 50%
CMY	0.0000, 0.7725, 0.4980
CMYK	0.00, 0.77, 0.50, 0.00
HSL	339°, 100%, 61%
HSV	339°, 77%, 100%
XYZ	46.6493, 25.8446, 22.9519
YIQ	124.8830, 94.9420, 63.5340

# Conversions

## Conversions Part 2

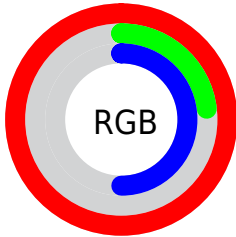
<b>Format</b>	<b>Color</b>
<b>R<sub>YB</sub></b>	255, 58, 128
Decimal	16726656
CIE <sub>Lab</sub>	57.89, 75.91, 8.37
CIE <sub>LCh</sub>	58, 76.369, 6.291
Yxy	25.8461, 0.4887, 0.2708
Android (android.graphics.Color)	4294916736 (0xFFFF3A80)
YUV	124.8830, 1.5367, 114.1126
Hunter-Lab	50.8376, 74.8284, 8.8184

# Details

The HunterLab color **50.8376, 74.8284, 8.8184** is a dark color, and the websafe version is hex **FF0066**. The color can be described as middle washed rose. A complement of this color would be **87.1339, -57.7088, 21.4439**, and the grayscale version is **45.2110, -2.4123, 2.4564**.

A 20% lighter version of the original color is **62.2592, 53.5030, -2.3307**, and **34.3089, 60.4003, 9.4152** is the 20% darker color. If you saturate the color by 10%, you get **48.4572, 79.7511, 12.6559**, and if you desaturate by 10%, it is **54.3624, 67.2046, 5.7042**.

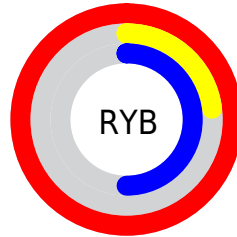
# Distribution



Red (100%)

Green (23%)

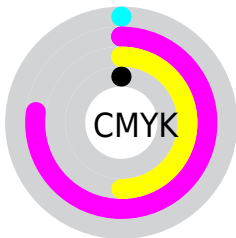
Blue (50%)



Red (100%)

Yellow (23%)

Blue (50%)

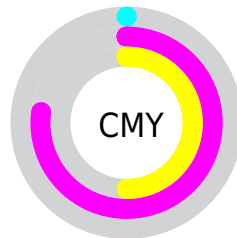


Cyan (0%)

Magenta (77%)

Yellow (50%)

Black (0%)



Cyan (0%)

Magenta (77%)

Yellow (50%)

# Brightness & Saturation Gradients

These gradients show how the HunterLab color 50.8376, 74.8284, 8.8184 changes by changing the brightness by 10 percent. The first figure shows a shift by +10% for each color and the second figure -10%.

Similar to the brightness gradients but the following saturation gradients show a change of the HunterLab color 50.8376, 74.8284, 8.8184 by changing the saturation by 10% instead.



50.8376, 74.8284,  
8.8184

50.8376, 74.8284,  
8.8184

167.9362, 93.1019,  
18.4915

40.8761, 72.4239,  
7.7941

72.8193, 79.4850,  
10.8843

31.6653, 70.0638,  
6.7648

84.7575, 81.6976,  
11.9303

23.2740, 67.9110,  
5.7209

97.2849, 83.8202,  
12.9882

15.7919, 66.3870,  
4.6426

110.3751, 85.8515,  
14.0594

9.3464, 66.7735,  
4.2204

124.0048, 87.7926,  
15.1447

0.0000, INF, NaN

0.0000, INF, NaN

138.1535, 89.6459,

16.2449

0.0000, NaN, NaN

152.8029, 91.4146,  
17.3604

0.0000, NaN, NaN

■ 50.8376, 74.8284,  
8.8184

■ 50.8376, 74.8284,  
8.8184

■ 48.4572, 79.7511,  
12.6559

■ 54.3624, 67.2046,  
5.7042

■ 47.1600, 81.6895,  
16.8428

■ 58.9656, 57.6526,  
3.4953

■ 46.9130, 81.9352,  
17.9481

■ 64.5291, 46.9717,  
2.2125

■ 70.9162, 35.7902,  
1.7707

■ 77.9981, 24.5116,  
2.0427

■ 85.6634, 13.3572,  
2.8994

■ 93.8211, 2.4276,  
4.2280

100.0000, -5.3359,  
5.4331

# Harmonies

## Analogous

The Analogous color harmony consists of three colors that are next to each other on the color wheel.



50.8391, 67.4790, -27.1446



50.8376, 74.8284, 8.8184



50.8391, 57.5827, 26.7729

# Triad

The Triadic color harmony groups three colors that are evenly spaced from another and form a triangle on the color wheel.



50.8391, 74.8235, 8.8197



50.8391, -34.4743, 31.0565



50.8391, -25.3351, -86.3618

# Complementary

The Complementary color scheme is a pair of colors which are on the opposite of each other on the color wheel.



50.8376, 74.8284, 8.8184



87.1339, -57.7088, 21.4439

# Split Complementary

Split-complementary colors differ from the complementary color scheme. The scheme consists of three colors, the original color and two neighbors of the complement color.



50.8391, -43.6827, -46.0291



50.8376, 74.8284, 8.8184



50.8391, -47.9652, 21.2388

# Square

The Square scheme is like the rectangle color scheme, but the four colors are evenly spaced on the color wheel.



50.8391, 74.8235, 8.8197



50.8391, -9.3376, 33.4207



50.8391, -50.8565, -4.1349



50.8391, 4.2642, -97.7992



# Rectangle

The Rectangle color scheme consists of four colors that form a rectangle on the color wheel.



50.8376, 74.8284, 8.8184



50.8391, 36.5036, 31.4520



50.8391, -50.8565, -4.1349



50.8391, -32.7700, -74.8860

# Sweetspot

The Sweet Spot groups the original color and five complimentary colors.



50.8391, 74.8235, 8.8197



81.1896, 19.7492, 2.3422



45.0411, 75.8877, -95.4542



36.3036, 11.0095, 0.9628

0.0000, NaN, NaN



46.2646, -2.4686, 2.5136



# Same Dimension

The Same Dimension uses a secret algorithm to generate beautiful new colors.



50.8391, 74.8235, 8.8197



47.5911, 81.2113, 15.0526



52.8675, 60.0801, 29.1370



42.5367, 2.2536, 1.8007



33.9493, 59.3666, 12.4223



10.6869, 18.8673, 2.5199



# Inverse Universe

The Inverse Universe completely reimagines the original color for something new.



50.8391, 74.8235, 8.8197



47.5911, 81.2113, 15.0526



80.0075, -33.4994, -21.3955



42.5367, 2.2536, 1.8007



33.9493, 59.3666, 12.4223



10.6869, 18.8673, 2.5199



# Previews

## White Background



This preview shows how the HunterLab color 50.8376, 74.8284, 8.8184 looks on a white background.

## Color Contrast Check

Large Text (above 18pt) WCAG AA ✓ Pass

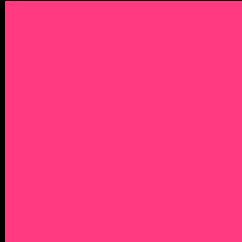
Any Text WCAG AA × Fail

Large Text (above 18pt) WCAG AAA × Fail

Any Text WCAG AAA × Fail



# Black Background



This preview shows how the HunterLab color 50.8376, 74.8284, 8.8184 looks on a black background.

## Color Contrast Check

Large Text (above 18pt) WCAG AA ✓ Pass

Any Text WCAG AA ✓ Pass

Large Text (above 18pt) WCAG AAA ✓ Pass

Any Text WCAG AAA × Fail

If you want to check with other color combinations, try the [Color Contrast Checker](#).

# HunterLab 50.8376, 74.8284, 8.8184 Background



This preview shows how black text looks on a background with the HunterLab color 50.8376, 74.8284, 8.8184.



This preview shows how white text looks on a background with the HunterLab color 50.8376, 74.8284, 8.8184.

8.8184.

# Color Blindness Simulation

Color vision deficiency is a very complex topic, and I could not describe the different causes any better than Wikipedia does, so if you want to learn more, you should check out their [article about color blindness](#).

## Dichromacy



### Original Color

50.8376, 74.8284, 8.8184

### Protanopia

51.0500, 1.7502, -13.8421

### Deuteranopia

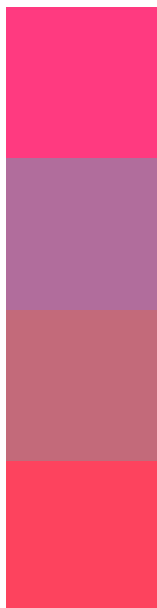
50.8485, 3.5222, 11.0441



## Tritanopia

50.8313, 64.6162, 24.6889

# Trichromacy



## Original Color

50.8376, 74.8284, 8.8184

## Protanomaly

47.6284, 27.5871, -9.3221

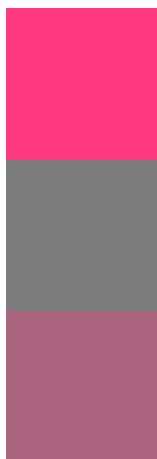
## Deuteranomaly

48.2859, 30.7361, 7.6832

## Tritanomaly

50.7002, 68.0708, 20.0491

# Monochromacy



## Original Color

50.8376, 74.8284, 8.8184

## Achromatopsia

45.2856, -2.4163, 2.4605

## Achromatomaly

44.2542, 25.1387, 1.2643

# CSS Examples

## Text

The CSS property to change the color of the text to HunterLab 50.8376, 74.8284, 8.8184 is called "color". The color property can be set on classes, ids or directly on the HTML element.

This example shows how text in the color `rgb(255, 58, 128)` looks like.

```
.text, #text, p{  
    color:rgb(255, 58, 128)  
}
```

If you want to add a text shadow in that color use the text-shadow property, you can generate a text shadow directly with our [CSS Text Shadow Generator](#).

Here you see how black text with a 4 pixel rgb(255, 58, 128) colored shadow looks like.

```
.shadow{ text-shadow: 4px 4px 2px rgb(255, 58, 128) }
```

## Border

The CSS property to change the border of an element to HunterLab 50.8376, 74.8284, 8.8184 is called "border". The border property can be set on classes, ids or directly on the HTML element.

This example shows the color as border, it can be applied via the CSS property "border" or "border-color".

```
.border, #border, table{ border:4px solid rgb(255, 58, 128) }
```



If only the border color should be changed use the property border-color.

```
.border{ border-color:rgb(255, 58, 128) }
```

If you want to add a box shadow in that color use:

Here you see how a box with a 4 pixel rgb(255, 58, 128) colored shadow looks like.

```
.boxshadow{ -moz-box-shadow:4px 4px 4px  
4px rgb(255, 58, 128); -webkit-box-  
shadow:4px 4px 4px 4px rgb(255, 58, 128);  
box-shadow:4px 4px 4px 4px rgb(255, 58,  
128) }
```

# Background

The CSS property to change the background color of an element to HunterLab 50.8376, 74.8284, 8.8184 is called "background". The background property can be set on classes, ids or directly on the HTML element.

```
.background, #background, body{  
background: rgb(255, 58, 128) }
```

If only the background color should be changed can be used:

```
.background{ background-color: rgb(255, 58,  
128) }
```

This example shows the color as background, it is applied via the CSS property "background".

To optimize and compress your CSS code, you can use our [online CSS compressor and optimizer](#) based on csstidy. If you want to create a linear or radial gradient as background or border, check our [CSS Gradient Generator](#).

Hey! You found this booklet interesting? Support Converting Colors with the new Membership Option!

The pro membership hides all ads, plus gives you double the colors in the color bucket, and more awesome pro features!

**[Learn more, Memberships starting at \\$2.50/m!](#)**

**Follow me  
on Twitter!**

@ConvertingColor