

Converting Colors

HunterLab(50.8534, 11.4101,
13.3208)

Have a look what the booklet for
HunterLab(50.8534, 11.4101,
13.3208) contains.

HunterLab(50.8534, 11.4101, 13.3208)	3
<i>Conversions</i>	4
<i>Details</i>	6
<i>Harmonies</i>	12
<i>Previews</i>	24
<i>Color Blindness Simulation</i>	28
<i>CSS Examples</i>	31

Color

**HunterLab(50.8534, 11.4101,
13.3208)**

Conversions

Conversions Part 1

Format	Color
Hex	B08071
RGB	176, 128, 113
RGB Percent	69%, 50%, 44%
CMY	0.3098, 0.4980, 0.5569
CMYK	0.00, 0.27, 0.36, 0.31
HSL	14°, 29%, 57%
HSV	14°, 36%, 69%
XYZ	28.6043, 25.8607, 19.1068
YIQ	140.6420, 33.4230, 5.5110

Conversions

Conversions Part 2

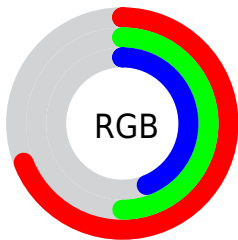
Format	Color
R_{YB}	176, 133, 113
Decimal	11567217
CIE _{Lab}	57.91, 16.51, 15.45
CIE _{LCh}	58, 22.614, 43.100
Yxy	25.8619, 0.3888, 0.3515
Android (android.graphics.Color)	4289757297 (0xFFB08071)
YUV	140.6420, -13.6275, 31.0090
Hunter-Lab	50.8534, 11.4101, 13.3208

Details

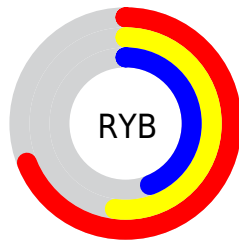
The HunterLab color **50.8534, 11.4101, 13.3208** is a dark color, and the websafe version is hex **996666**. A complement of this color would be **56.6867, -12.9510, -8.2572**, and the grayscale version is **51.5109, -2.7485, 2.7987**.

A 20% lighter version of the original color is **72.8615, 11.9372, 16.1391**, and **31.7981, 10.4593, 10.4522** is the 20% darker color. If you saturate the color by 10%, you get **47.1521, 16.1867, 15.6044**, and if you desaturate by 10%, it is **54.7994, 6.9028, 10.8088**.

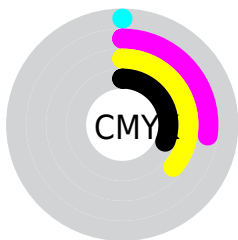
Distribution



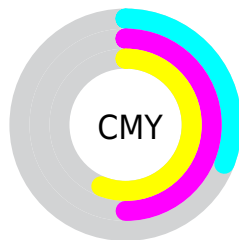
- Red (69%)
- Green (50%)
- Blue (44%)



- Red (69%)
- Yellow (52%)
- Blue (44%)



- Cyan (0%)
- Magenta (27%)
- Yellow (36%)
- Black (31%)



- Cyan (31%)
- Magenta (50%)
- Yellow (56%)

Brightness & Saturation Gradients

These gradients show how the HunterLab color 50.8534, 11.4101, 13.3208 changes by changing the brightness by 10 percent. The first figure shows a shift by +10% for each color and the second figure -10%.

Similar to the brightness gradients but the following saturation gradients show a change of the HunterLab color 50.8534, 11.4101, 13.3208 by changing the saturation by 10% instead.

■ 50.8534, 11.4101,
13.3208

■ 50.8534, 11.4101,
13.3208

167.9594, 11.4801,
25.9736

■ 40.8905, 11.0548,
11.8469

■ 72.8369, 11.8586,
16.1833

■ 31.6786, 10.6000,
10.3225

■ 84.7759, 11.9741,
17.5894

■ 23.2860, 10.0259,
8.7217

■ 97.3042, 12.0257,
18.9875

■ 15.8024, 9.3089,
6.9998

■ 110.3952, 12.0184,
20.3817

■ 9.3553, 8.4199,
6.5487

124.0257, 11.9567,
21.7752

0.0000, INF, NaN

0.0000, NaN, NaN

138.1752, 11.8444,

23.1704

0.0000, NaN, NaN

152.8253, 11.6846,
24.5694

0.0000, NaN, NaN

■ 50.8534, 11.4101,
13.3208

■ 50.8534, 11.4101,
13.3208

■ 47.1521, 16.1867,
15.6044

■ 54.7994, 6.9028,
10.8088

■ 43.7277, 21.2194,
17.5941

■ 58.9558, 2.6674,
8.1153

■ 40.6223, 26.4477,
19.2141

■ 63.2979, -1.3150,
5.2783

■ 37.8798, 31.7577,
20.3798

■ 67.8039, -5.0670,
2.3257

■ 35.5440, 36.9648,
21.0150

■ 72.4558, -8.6131,
-0.7218

■ 33.6510, 41.8093,
21.0931

■ 77.2383, -11.9773,
-3.8491

■ 32.9849, 43.6321,
21.0890

■ 82.1389, -15.1818,
-7.0445

■ 87.1468, -18.2465,
-10.2996

■ 91.6538, -24.5887,
-5.1547

Harmonies

Analogous

The Analogous color harmony consists of three colors that are next to each other on the color wheel.



50.8546, 16.4464, 6.5725



50.8534, 11.4101, 13.3208



50.8546, 2.7365, 16.8134

Triad

The Triadic color harmony groups three colors that are evenly spaced from another and form a triangle on the color wheel.



50.8546, 11.4079, 13.3216



50.8546, -19.1303, 7.5919



50.8546, 1.5157, -17.3688

Complementary

The Complementary color scheme is a pair of colors which are on the opposite of each other on the color wheel.



50.8534, 11.4101, 13.3208



56.6867, -12.9510, -8.2572

Split Complementary

Split-complementary colors differ from the complementary color scheme. The scheme consists of three colors, the original color and two neighbors of the complement color.



50.8546, -7.9485, -16.9571



50.8534, 11.4101, 13.3208



50.8546, -19.4039, -1.3549

Square

The Square scheme is like the rectangle color scheme, but the four colors are evenly spaced on the color wheel.



50.8546, 11.4079, 13.3216



50.8546, -14.6720, 13.9486



50.8546, -15.4495, -10.6818



50.8546, 10.4575, -11.7201

Rectangle

The Rectangle color scheme consists of four colors that form a rectangle on the color wheel.



50.8534, 11.4101, 13.3208



50.8546, -3.7059, 17.3117



50.8546, -15.4495, -10.6818



50.8546, -1.7188, -17.9615

Sweetspot

The Sweet Spot groups the original color and five complimentary colors.



50.8546, 11.4079, 13.3216



82.0595, 1.0833, 9.1922



48.6049, 26.1042, -10.8930



37.8445, 0.8346, 4.5120



94.3401, -5.0338, 5.1257



41.3092, -2.2042, 2.2444

Same Dimension

The Same Dimension uses a secret algorithm to generate beautiful new colors.



50.8546, 11.4079, 13.3216



64.4905, 20.4556, 20.4160



59.4033, -3.8399, 20.9436



29.7035, 0.0315, 3.0288



28.3914, 36.9582, 18.1417



5.8730, 4.2886, 3.6940

Inverse Universe

The Inverse Universe completely reimagines the original color for something new.



56.6867, -12.9510, -8.2572



73.9169, -19.2002, -14.5428



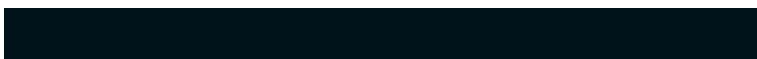
47.4949, 1.8320, -21.9766



30.4659, -3.1167, 0.2180



38.6273, -11.8667, -22.6638



7.4343, -2.9000, -3.0321

Previews

White Background



This preview shows how the HunterLab color 50.8534, 11.4101, 13.3208 looks on a white background.

Color Contrast Check

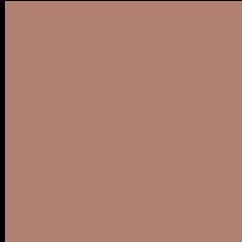
Large Text (above 18pt) WCAG AA ✓ Pass

Any Text WCAG AA × Fail

Large Text (above 18pt) WCAG AAA × Fail

Any Text WCAG AAA × Fail

Black Background



This preview shows how the HunterLab color 50.8534, 11.4101, 13.3208 looks on a black background.

Color Contrast Check

Large Text (above 18pt) WCAG AA ✓ Pass

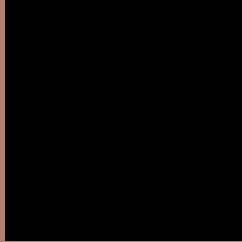
Any Text WCAG AA ✓ Pass

Large Text (above 18pt) WCAG AAA ✓ Pass

Any Text WCAG AAA × Fail

If you want to check with other color combinations, try the [Color Contrast Checker](#).

HunterLab 50.8534, 11.4101, 13.3208 Background



This preview shows how black text looks on a background with the HunterLab color 50.8534, 11.4101, 13.3208.



This preview shows how white text looks on a background with the HunterLab color 50.8534, 11.4101,

Color Blindness Simulation

Color vision deficiency is a very complex topic, and I could not describe the different causes any better than Wikipedia does, so if you want to learn more, you should check out their [article about color blindness](#).

Dichromacy



Original Color

50.8534, 11.4101, 13.3208

Protanopia

50.9669, -3.2630, 11.4100

Deuteranopia

50.8934, 3.3546, 13.5607



Tritanopia

50.8463, 16.3252, 5.3173

Trichromacy



Original Color

50.8534, 11.4101, 13.3208

Protanomaly

50.8508, 1.9866, 12.1036

Deuteranomaly

50.8801, 6.0762, 13.5955

Tritanomaly

50.7693, 14.3745, 8.4840

Monochromacy



Original Color

50.8534, 11.4101, 13.3208

Achromatopsia

51.6097, -2.7538, 2.8041

Achromatomaly

51.1048, 2.1739, 6.6167

CSS Examples

Text

The CSS property to change the color of the text to HunterLab 50.8534, 11.4101, 13.3208 is called "color". The color property can be set on classes, ids or directly on the HTML element.

This example shows how text in the color `rgb(176, 128, 113)` looks like.

```
.text, #text, p{  
    color:rgb(176, 128, 113)  
}
```

If you want to add a text shadow in that color use the text-shadow property, you can generate a text shadow directly with our [CSS Text Shadow Generator](#).

Here you see how black text with a 4 pixel rgb(176, 128, 113) colored shadow looks like.

```
.shadow{ text-shadow: 4px 4px 2px rgb(176, 128, 113) }
```

Border

The CSS property to change the border of an element to HunterLab 50.8534, 11.4101, 13.3208 is called "border". The border property can be set on classes, ids or directly on the HTML element.

This example shows the color as border, it can be applied via the CSS property "border" or "border-color".

```
.border, #border, table{ border:4px solid rgb(176, 128, 113) }
```


If only the border color should be changed use the property `border-color`.

```
.border{ border-color:rgb(176, 128, 113) }
```

If you want to add a box shadow in that color use:

Here you see how a box with a 4 pixel `rgb(176, 128, 113)` colored shadow looks like.

```
.boxshadow{ -moz-box-shadow:4px 4px 4px 4px rgb(176, 128, 113); -webkit-box-shadow:4px 4px 4px 4px rgb(176, 128, 113); box-shadow:4px 4px 4px 4px rgb(176, 128, 113) }
```

Background

The CSS property to change the background color of an element to HunterLab 50.8534, 11.4101, 13.3208 is called "background". The background property can be set on classes, ids or directly on the HTML element.

```
.background, #background, body{  
background: rgb(176, 128, 113) }
```

If only the background color should be changed can be used:

```
.background{ background-color: rgb(176,  
128, 113) }
```

This example shows the color as background, it is applied via the CSS property "background".

To optimize and compress your CSS code, you can use our [online CSS compressor and optimizer](#) based on csstidy. If you want to create a linear or radial gradient as background or border, check our [CSS Gradient Generator](#).

Hey! You found this booklet interesting? Support Converting Colors with the new Membership Option!

The pro membership hides all ads, plus gives you double the colors in the color bucket, and more awesome pro features!

[Learn more, Memberships starting at \\$2.50/m!](#)

**Follow me
on Twitter!**

@ConvertingColor