

Converting Colors

HunterLab(50.9180, 13.8149,
1.4504)

Have a look what the booklet for
HunterLab(50.9180, 13.8149,
1.4504) contains.

HunterLab(51.0680, 13.6444, 1.5363)	3
<i>Conversions</i>	4
<i>Details</i>	6
<i>Harmonies</i>	12
<i>Previews</i>	24
<i>Color Blindness Simulation</i>	28
<i>CSS Examples</i>	31

Color

**HunterLab(51.0680, 13.6444,
1.5363)**

Conversions

Conversions Part 1

Format	Color
Hex	AB808F
RGB	171, 128, 143
RGB Percent	67%, 50%, 56%
CMY	0.3294, 0.4980, 0.4392
CMYK	0.00, 0.25, 0.16, 0.33
HSL	339°, 20%, 59%
HSV	339°, 25%, 67%
XYZ	29.4716, 26.0794, 29.4671
YIQ	142.5670, 20.8130, 13.7810

Conversions

Conversions Part 2

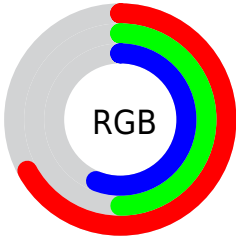
Format	Color
R_{YB}	171, 128, 143
Decimal	11239567
CIE _{Lab}	58.11, 18.97, -1.59
CIE _{LCh}	58, 19.036, 355.222
Yxy	26.0806, 0.3466, 0.3068
Android (android.graphics.Color)	4289429647 (0xFFAB808F)
YUV	142.5670, 0.2135, 24.9357
Hunter-Lab	51.0680, 13.6444, 1.5363

Details

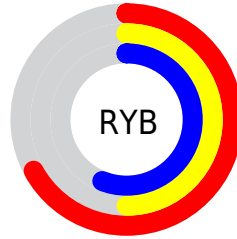
The HunterLab color $51.0680, 13.6444, 1.5363$ is a dark color, and the websafe version is hex $CC9999$. A complement of this color would be $60.0965, -17.6461, 5.6902$, and the grayscale version is $52.2306, -2.7869, 2.8378$.

A 20% lighter version of the original color is $73.0820, 14.4542, 2.4314$, and $31.7658, 12.8040, 0.4690$ is the 20% darker color. If you saturate the color by 10%, you get $46.5491, 20.6342, 1.3014$, and if you desaturate by 10%, it is $55.9270, 6.7508, 2.1067$.

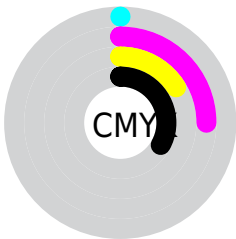
Distribution



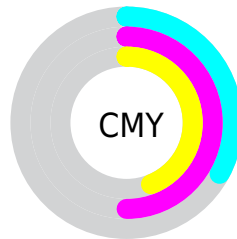
- Red (67%)
- Green (50%)
- Blue (56%)



- Red (67%)
- Yellow (50%)
- Blue (56%)



- Cyan (0%)
- Magenta (25%)
- Yellow (16%)
- Black (33%)



- Cyan (33%)
- Magenta (50%)
- Yellow (44%)

Brightness & Saturation Gradients

These gradients show how the HunterLab color 51.0680, 13.6444, 1.5363 changes by changing the brightness by 10 percent. The first figure shows a shift by +10% for each color and the second figure -10%.

Similar to the brightness gradients but the following saturation gradients show a change of the HunterLab color 51.0680, 13.6444, 1.5363 by changing the saturation by 10% instead.

51.0680, 13.6444,
1.5363

51.0680, 13.6444,
1.5363

168.2788, 14.6027,
7.3233

41.0901, 13.1698,
1.0787

73.0787, 14.3168,
2.5813

31.8619, 12.5894,
0.6677

85.0302, 14.5374,
3.1609

23.4515, 11.8836,
0.3098

97.5705, 14.6900,
3.7759

15.9478, 11.0295,
0.0128

110.6729, 14.7803,
4.4242

9.4777, 10.0030,
-0.2112

124.3145, 14.8130,
5.1045

0.0000, INF, NaN

0.0000, NaN, NaN

138.4745, 14.7920,

5.8152

0.0000, NaN, NaN

153.1348, 14.7209,
6.5552

0.0000, NaN, NaN

■ 51.0680, 13.6444,
1.5363

■ 51.0680, 13.6444,
1.5363

■ 46.5491, 20.6342,
1.3014

■ 55.9270, 6.7508,
2.1067

■ 42.4293, 27.6197,
1.4722

■ 61.0714, 0.0044,
2.9468

■ 38.7832, 34.3985,
2.1252

■ 66.4613, -6.5860,
4.0064

■ 35.6916, 40.6450,
3.3203

■ 72.0636, -13.0276,
5.2453

■ 33.2314, 45.9116,
5.0700

■ 77.8519, -19.3358,
6.6320

■ 31.4564, 49.7145,
7.3020

■ 83.8049, -25.5287,
8.1418

■ 30.3652, 51.7345,
9.8368

■ 89.9050, -31.6244,
9.7556

■ 29.9674, 52.3962,
11.0226

■ 92.7411, -33.0861,
7.7189

■ 93.0927, -31.0573,
2.7027

Harmonies

Analogous

The Analogous color harmony consists of three colors that are next to each other on the color wheel.



51.0692, 10.6277, -6.3591



51.0680, 13.6444, 1.5363



51.0692, 12.0539, 8.6685

Triad

The Triadic color harmony groups three colors that are evenly spaced from another and form a triangle on the color wheel.



51.0692, 13.6426, 1.5373



51.0692, -9.1619, 14.3939



51.0692, -11.2658, -10.8640

Complementary

The Complementary color scheme is a pair of colors which are on the opposite of each other on the color wheel.



51.0680, 13.6444, 1.5363



60.0965, -17.6461, 5.6902

Split Complementary

Split-complementary colors differ from the complementary color scheme. The scheme consists of three colors, the original color and two neighbors of the complement color.



51.0692, -15.9984, -3.9060



51.0680, 13.6444, 1.5363



51.0692, -14.8376, 10.4904

Square

The Square scheme is like the rectangle color scheme, but the four colors are evenly spaced on the color wheel.



51.0692, 13.6426, 1.5373



51.0692, -1.4311, 15.3912



51.0692, -17.2647, 3.9919



51.0692, -4.0114, -14.1913

Rectangle

The Rectangle color scheme consists of four colors that form a rectangle on the color wheel.



51.0680, 13.6444, 1.5363



51.0692, 8.6467, 12.1720



51.0692, -17.2647, 3.9919



51.0692, -13.1862, -8.8245

Sweetspot

The Sweet Spot groups the original color and five complimentary colors.



51.0692, 13.6426, 1.5373



79.6291, 2.6902, 3.5729



50.4409, 13.5446, -13.9690



37.1202, 1.8981, 1.6058



93.2148, -4.9737, 5.0645



40.3295, -2.1519, 2.1912

Same Dimension

The Same Dimension uses a secret algorithm to generate beautiful new colors.



51.0692, 13.6426, 1.5373



65.0244, 23.2873, 1.8258



52.3378, 8.2665, 9.2586



28.3897, 1.3490, 1.2375



26.0366, 45.5572, 9.3146



4.4622, 8.0347, -0.1640

Inverse Universe

The Inverse Universe completely reimagines the original color for something new.



51.0692, 13.6426, 1.5373



65.0244, 23.2873, 1.8258



58.5477, -12.1297, -3.1523



28.3897, 1.3490, 1.2375



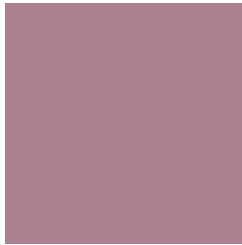
26.0366, 45.5572, 9.3146



4.4622, 8.0347, -0.1640

Previews

White Background



This preview shows how the HunterLab color 51.0680, 13.6444, 1.5363 looks on a white background.

Color Contrast Check

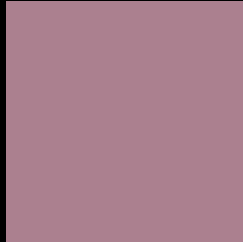
Large Text (above 18pt) WCAG AA ✓ Pass

Any Text WCAG AA × Fail

Large Text (above 18pt) WCAG AAA × Fail

Any Text WCAG AAA × Fail

Black Background



This preview shows how the HunterLab color 51.0680, 13.6444, 1.5363 looks on a black background.

Color Contrast Check

Large Text (above 18pt) WCAG AA ✓ Pass

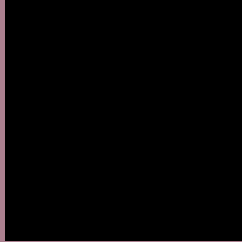
Any Text WCAG AA ✓ Pass

Large Text (above 18pt) WCAG AAA ✓ Pass

Any Text WCAG AAA × Fail

If you want to check with other color combinations, try the [Color Contrast Checker](#).

HunterLab 51.0680, 13.6444, 1.5363 Background



This preview shows how black text looks on a background with the HunterLab color 51.0680, 13.6444, 1.5363.



This preview shows how white text looks on a background with the HunterLab color 51.0680, 13.6444,

Color Blindness Simulation

Color vision deficiency is a very complex topic, and I could not describe the different causes any better than Wikipedia does, so if you want to learn more, you should check out their [article about color blindness](#).

Dichromacy



Original Color

51.0680, 13.6444, 1.5363

Protanopia

51.2276, -0.6107, -1.8398

Deuteranopia

51.3163, 3.5001, 2.1145



Tritanopia

51.0986, 12.1892, 3.3583

Trichromacy



Original Color

51.0680, 13.6444, 1.5363

Protanomaly

51.0038, 4.1618, -0.5872

Deuteranomaly

51.1875, 7.2510, 2.0264

Tritanomaly

51.1273, 12.3381, 2.9483

Monochromacy



Original Color

51.0680, 13.6444, 1.5363

Achromatopsia

52.4097, -2.7964, 2.8475

Achromatomaly

51.8965, 2.6792, 2.3364

CSS Examples

Text

The CSS property to change the color of the text to HunterLab 51.0680, 13.6444, 1.5363 is called "color". The color property can be set on classes, ids or directly on the HTML element.

This example shows how text in the color `rgb(171, 128, 143)` looks like.

```
.text, #text, p{  
    color:rgb(171, 128, 143)  
}
```

If you want to add a text shadow in that color use the text-shadow property, you can generate a text shadow directly with our [CSS Text Shadow Generator](#).

Here you see how black text with a 4 pixel rgb(171, 128, 143) colored shadow looks like.

```
.shadow{ text-shadow: 4px 4px 2px rgb(171, 128, 143) }
```

Border

The CSS property to change the border of an element to HunterLab 51.0680, 13.6444, 1.5363 is called "border". The border property can be set on classes, ids or directly on the HTML element.

This example shows the color as border, it can be applied via the CSS property "border" or "border-color".

```
.border, #border, table{ border:4px solid rgb(171, 128, 143) }
```


If only the border color should be changed use the property `border-color`.

```
.border{ border-color:rgb(171, 128, 143) }
```

If you want to add a box shadow in that color use:

Here you see how a box with a 4 pixel `rgb(171, 128, 143)` colored shadow looks like.

```
.boxshadow{ -moz-box-shadow:4px 4px 4px 4px rgb(171, 128, 143); -webkit-box-shadow:4px 4px 4px 4px rgb(171, 128, 143); box-shadow:4px 4px 4px 4px rgb(171, 128, 143) }
```

Background

The CSS property to change the background color of an element to HunterLab 51.0680, 13.6444, 1.5363 is called "background". The background property can be set on classes, ids or directly on the HTML element.

```
.background, #background, body{  
background: rgb(171, 128, 143) }
```

If only the background color should be changed can be used:

```
.background{ background-color: rgb(171,  
128, 143) }
```

This example shows the color as background, it is applied via the CSS property "background".

To optimize and compress your CSS code, you can use our [online CSS compressor and optimizer](#) based on csstidy. If you want to create a linear or radial gradient as background or border, check our [CSS Gradient Generator](#).

Hey! You found this booklet interesting? Support Converting Colors with the new Membership Option!

The pro membership hides all ads, plus gives you double the colors in the color bucket, and more awesome pro features!

[Learn more, Memberships starting at \\$2.50/m!](#)

**Follow me
on Twitter!**

@ConvertingColor