

Converting Colors

HunterLab(50.9519, 16.5760,
5.1061)

Have a look what the booklet for
HunterLab(50.9519, 16.5760,
5.1061) contains.

HunterLab(50.9904, 16.8270, 5.0620)	3
<i>Conversions</i>	4
<i>Details</i>	6
<i>Harmonies</i>	12
<i>Previews</i>	24
<i>Color Blindness Simulation</i>	28
<i>CSS Examples</i>	31

Color

**HunterLab(50.9904, 16.8270,
5.0620)**

Conversions

Conversions Part 1

Format	Color
Hex	B37D87
RGB	179, 125, 135
RGB Percent	70%, 49%, 53%
CMY	0.2980, 0.5098, 0.4706
CMYK	0.00, 0.30, 0.25, 0.30
HSL	349°, 26%, 60%
HSV	349°, 30%, 70%
XYZ	30.2972, 26.0002, 26.3434
YIQ	142.2860, 28.9740, 14.5580

Conversions

Conversions Part 2

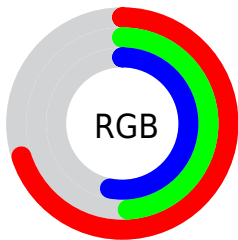
Format	Color
RYB	179, 125, 135
Decimal	11763079
CIELab	58.04, 22.42, 3.03
CIElCh	58, 22.628, 7.690
Yxy	26.0014, 0.3666, 0.3146
Android (android.graphics.Color)	4289953159 (0xFFB37D87)
YUV	142.2860, -3.5920, 32.1982
Hunter-Lab	50.9904, 16.8270, 5.0620

Details

The HunterLab color **50.9904, 16.8270, 5.0620** is a dark color, and the websafe version is hex **996666**. A complement of this color would be **62.8215, -19.7518, 2.9367**, and the grayscale version is **52.1306, -2.7816, 2.8324**.

A 20% lighter version of the original color is **73.0099, 17.9215, 6.6658**, and **31.6986, 15.5546, 3.7297** is the 20% darker color. If you saturate the color by 10%, you get **46.3542, 23.9084, 6.0845**, and if you desaturate by 10%, it is **56.0257, 9.8677, 4.3443**.

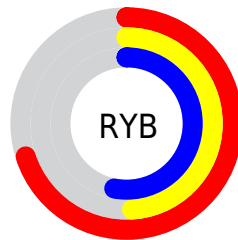
Distribution



Red (70%)

Green (49%)

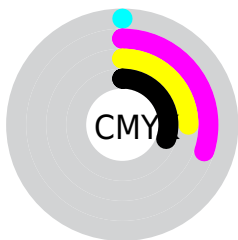
Blue (53%)



Red (70%)

Yellow (49%)

Blue (53%)

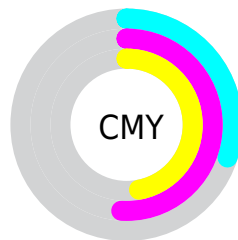


Cyan (0%)

Magenta (30%)

Yellow (25%)

Black (30%)



Cyan (30%)

Magenta (51%)

Yellow (47%)

Brightness & Saturation Gradients

These gradients show how the HunterLab color 50.9904, 16.8270, 5.0620 changes by changing the brightness by 10 percent. The first figure shows a shift by +10% for each color and the second figure -10%.

Similar to the brightness gradients but the following saturation gradients show a change of the HunterLab color 50.9904, 16.8270, 5.0620 by changing the saturation by 10% instead.

■ 50.9904, 16.8270,
5.0620

■ 50.9904, 16.8270,
5.0620

168.1633, 19.0337,
12.6031

■ 41.0179, 16.1851,
4.3520

■ 72.9913, 17.8126,
6.5641

■ 31.7956, 15.4302,
3.6676

■ 84.9383, 18.1807,
7.3536

■ 23.3916, 14.5426,
3.0088

■ 97.4742, 18.4754,
8.1684

■ 15.8952, 13.5027,
2.3730

110.5725, 18.7030,
9.0080

■ 9.4335, 12.2988,
1.8440

124.2101, 18.8685,
9.8718

0.0000, INF, NaN

0.0000, NaN, NaN

138.3663, 18.9764,

10.7592

0.0000, NaN, NaN

153.0229, 19.0303,
11.6698

0.0000, NaN, NaN

■ 50.9904, 16.8270,
5.0620

■ 50.9904, 16.8270,
5.0620

■ 46.3542, 23.9084,
6.0845

■ 56.0257, 9.8677,
4.3443

■ 42.1896, 30.9783,
7.4424

■ 61.3937, 3.0963,
3.8869

■ 38.5857, 37.7733,
9.1448

■ 67.0452, -3.4755,
3.6502

■ 35.6342, 43.8838,
11.1492

■ 72.9401, -9.8577,
3.5980

■ 33.4130, 48.7881,
13.3381

■ 79.0465, -16.0703,
3.7000

■ 31.9575, 52.0059,
15.5175

■ 85.3386, -22.1369,
3.9315

■ 31.1357, 53.6761,
17.3660

■ 91.7960, -28.0803,
4.2721

■ 93.8682, -27.5972,
-0.6497

■ 93.9807, -26.9541,
-2.2470

Harmonies

Analogous

The Analogous color harmony consists of three colors that are next to each other on the color wheel.



50.9916, 15.4426, -4.3272



50.9904, 16.8270, 5.0620



50.9916, 12.6713, 12.3604

Triad

The Triadic color harmony groups three colors that are evenly spaced from another and form a triangle on the color wheel.



50.9916, 16.8249, 5.0629



50.9916, -13.4938, 14.7761



50.9916, -9.5231, -16.2208

Complementary

The Complementary color scheme is a pair of colors which are on the opposite of each other on the color wheel.



50.9904, 16.8270, 5.0620



62.8215, -19.7518, 2.9367

Split Complementary

Split-complementary colors differ from the complementary color scheme. The scheme consists of three colors, the original color and two neighbors of the complement color.



50.9916, -16.4842, -9.1290



50.9904, 16.8270, 5.0620



50.9916, -18.6560, 8.9840

Square

The Square scheme is like the rectangle color scheme, but the four colors are evenly spaced on the color wheel.



50.9916, 16.8249, 5.0629



50.9916, -5.1627, 17.2548



50.9916, -19.7090, 0.3772



50.9916, -0.2376, -17.7987

Rectangle

The Rectangle color scheme consists of four colors that form a rectangle on the color wheel.



50.9904, 16.8270, 5.0620



50.9916, 7.4901, 15.4650



50.9916, -19.7090, 0.3772



50.9916, -12.1916, -14.3470

Sweetspot

The Sweet Spot groups the original color and five complimentary colors.



50.9916, 16.8249, 5.0629



82.9114, 3.2405, 5.1571



51.2543, 20.5731, -17.3917



38.5234, 2.1312, 2.4578



95.4677, -5.0939, 5.1869



42.2927, -2.2566, 2.2978

Same Dimension

The Same Dimension uses a secret algorithm to generate beautiful new colors.



50.9916, 16.8249, 5.0629



64.1751, 28.6134, 7.6067



54.9311, 7.3592, 13.0339



29.2064, 1.1957, 1.8219



26.1872, 45.1726, 14.3934



4.7268, 8.3137, 1.3578

Inverse Universe

The Inverse Universe completely reimagines the original color for something new.



50.9916, 16.8249, 5.0629



64.1751, 28.6134, 7.6067



58.0853, -10.5118, -7.9247



29.2064, 1.1957, 1.8219



26.1872, 45.1726, 14.3934



4.7268, 8.3137, 1.3578

Previews

White Background



This preview shows how the HunterLab color 50.9904, 16.8270, 5.0620 looks on a white background.

Color Contrast Check

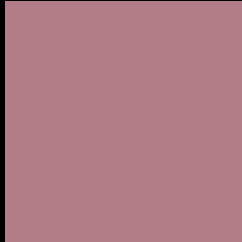
Large Text (above 18pt) WCAG AA ✓ Pass

Any Text WCAG AA × Fail

Large Text (above 18pt) WCAG AAA × Fail

Any Text WCAG AAA × Fail

Black Background



This preview shows how the HunterLab color 50.9904, 16.8270, 5.0620 looks on a black background.

Color Contrast Check

Large Text (above 18pt) WCAG AA ✓ Pass

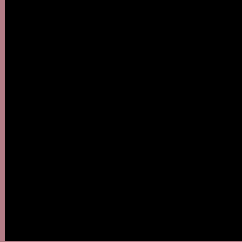
Any Text WCAG AA ✓ Pass

Large Text (above 18pt) WCAG AAA ✓ Pass

Any Text WCAG AAA × Fail

If you want to check with other color combinations, try the [Color Contrast Checker](#).

HunterLab 50.9904, 16.8270, 5.0620 Background



This preview shows how black text looks on a background with the HunterLab color 50.9904, 16.8270, 5.0620.



This preview shows how white text looks on a background with the HunterLab color 50.9904, 16.8270,

Color Blindness Simulation

Color vision deficiency is a very complex topic, and I could not describe the different causes any better than Wikipedia does, so if you want to learn more, you should check out their [article about color blindness](#).

Dichromacy



Original Color

50.9904, 16.8270, 5.0620

Protanopia

51.0990, -1.4815, 1.3089

Deuteranopia

51.0777, 3.6000, 5.7788



Tritanopia

50.9904, 16.8270, 5.0620

Trichromacy



Original Color

50.9904, 16.8270, 5.0620

Protanomaly

50.9040, 4.8116, 2.5527

Deuteranomaly

50.8393, 8.3903, 5.1705

Tritanomaly

50.9904, 16.8270, 5.0620

Monochromacy



Original Color

50.9904, 16.8270, 5.0620

Achromatopsia

52.0094, -2.7751, 2.8258

Achromatomaly

51.4208, 3.6776, 3.5855

CSS Examples

Text

The CSS property to change the color of the text to HunterLab 50.9904, 16.8270, 5.0620 is called "color". The color property can be set on classes, ids or directly on the HTML element.

This example shows how text in the color `rgb(179, 125, 135)` looks like.

```
.text, #text, p{  
    color:rgb(179, 125, 135)  
}
```

If you want to add a text shadow in that color use the text-shadow property, you can generate a text shadow directly with our [CSS Text Shadow Generator](#).

Here you see how black text with a 4 pixel rgb(179, 125, 135) colored shadow looks like.

```
.shadow{ text-shadow: 4px 4px 2px rgb(179, 125, 135) }
```

Border

The CSS property to change the border of an element to HunterLab 50.9904, 16.8270, 5.0620 is called "border". The border property can be set on classes, ids or directly on the HTML element.

This example shows the color as border, it can be applied via the CSS property "border" or "border-color".

```
.border, #border, table{ border:4px solid rgb(179, 125, 135) }
```


If only the border color should be changed use the property `border-color`.

```
.border{ border-color:rgb(179, 125, 135) }
```

If you want to add a box shadow in that color use:

Here you see how a box with a 4 pixel `rgb(179, 125, 135)` colored shadow looks like.

```
.boxshadow{ -moz-box-shadow:4px 4px 4px  
4px rgb(179, 125, 135); -webkit-box-  
shadow:4px 4px 4px 4px rgb(179, 125, 135);  
box-shadow:4px 4px 4px 4px rgb(179, 125,  
135) }
```

Background

The CSS property to change the background color of an element to HunterLab 50.9904, 16.8270, 5.0620 is called "background". The background property can be set on classes, ids or directly on the HTML element.

```
.background, #background, body{  
background: rgb(179, 125, 135) }
```

If only the background color should be changed can be used:

```
.background{ background-color: rgb(179,  
125, 135) }
```

This example shows the color as background, it is applied via the CSS property "background".

To optimize and compress your CSS code, you can use our [online CSS compressor and optimizer](#) based on csstidy. If you want to create a linear or radial gradient as background or border, check our [CSS Gradient Generator](#).

Hey! You found this booklet interesting? Support Converting Colors with the new Membership Option!

The pro membership hides all ads, plus gives you double the colors in the color bucket, and more awesome pro features!

[Learn more, Memberships starting at \\$2.50/m!](#)

**Follow me
on Twitter!**

@ConvertingColor