

Converting Colors

HunterLab(50.9519, 3.7885,
12.7713)

Have a look what the booklet for
HunterLab(50.9519, 3.7885,
12.7713) contains.

HunterLab(50.9377, 3.5916, 12.9205)	3
<i>Conversions</i>	4
<i>Details</i>	6
<i>Harmonies</i>	12
<i>Previews</i>	24
<i>Color Blindness Simulation</i>	28
<i>CSS Examples</i>	31

Color

**HunterLab(50.9377, 3.5916,
12.9205)**

Conversions

Conversions Part 1

Format	Color
Hex	A28672
RGB	162, 134, 114
RGB Percent	64%, 53%, 45%
CMY	0.3647, 0.4745, 0.5529
CMYK	0.00, 0.17, 0.30, 0.36
HSL	25°, 21%, 54%
HSV	25°, 30%, 64%
XYZ	26.4627, 25.9465, 19.5330
YIQ	140.0920, 23.1080, -0.2840

Conversions

Conversions Part 2

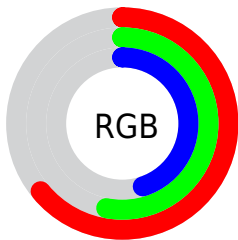
Format	Color
R_{YB}	162, 148, 114
Decimal	10651250
CIE _{Lab}	57.99, 7.58, 14.77
CIE _{LCh}	58, 16.598, 62.825
Yxy	25.9477, 0.3678, 0.3607
Android (android.graphics.Color)	4288841330 (0xFFA28672)
YUV	140.0920, -12.8634, 19.2133
Hunter-Lab	50.9377, 3.5916, 12.9205

Details

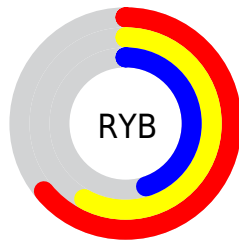
The HunterLab color $50.9377, 3.5916, 12.9205$ is a dark color, and the websafe version is hex $CC9999$. A complement of this color would be $50.5285, -6.7011, -9.0916$, and the grayscale version is $51.2913, -2.7368, 2.7868$.

A 20% lighter version of the original color is $72.9378, 3.4521, 15.6784$, and $31.5994, 3.7901, 9.8668$ is the 20% darker color. If you saturate the color by 10%, you get $48.0774, 6.3556, 15.5468$, and if you desaturate by 10%, it is $53.9256, 1.0731, 9.9496$.

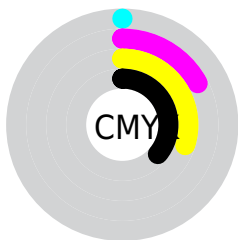
Distribution



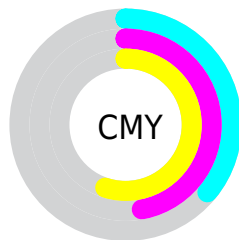
- Red (64%)
- Green (53%)
- Blue (45%)



- Red (64%)
- Yellow (58%)
- Blue (45%)



- Cyan (0%)
- Magenta (17%)
- Yellow (30%)
- Black (36%)



- Cyan (36%)
- Magenta (47%)
- Yellow (55%)

Brightness & Saturation Gradients

These gradients show how the HunterLab color 50.9377, 3.5916, 12.9205 changes by changing the brightness by 10 percent. The first figure shows a shift by +10% for each color and the second figure -10%.

Similar to the brightness gradients but the following saturation gradients show a change of the HunterLab color 50.9377, 3.5916, 12.9205 by changing the saturation by 10% instead.

■ 50.9377, 3.5916,
12.9205

■ 50.9377, 3.5916,
12.9205

168.0849, 0.2962,
25.2776

■ 40.9689, 3.7020,
11.4917

■ 72.9318, 3.1814,
15.7032

■ 31.7505, 3.7419,
10.0172

■ 84.8758, 2.8972,
17.0736

■ 23.3510, 3.6972,
8.4729

■ 97.4088, 2.5654,
18.4378

■ 15.8595, 3.5498,
6.8165

■ 110.5043, 2.1895,
19.8000

■ 9.4035, 3.2703,
6.5824

124.1392, 1.7723,
21.1630

0.0000, NaN, NaN

0.0000, NaN, NaN

138.2928, 1.3164,

22.5292

0.0000, NaN, NaN

152.9469, 0.8237,
23.9002

0.0000, NaN, NaN

■ 50.9377, 3.5916,
12.9205

■ 50.9377, 3.5916,
12.9205

■ 48.0774, 6.3556,
15.5468

■ 53.9256, 1.0731,
9.9496

■ 45.3545, 9.3830,
17.7799

■ 57.0260, -1.2110,
6.6737

■ 42.7848, 12.6768,
19.5707

■ 60.2295, -3.2804,
3.1299

■ 40.3841, 16.2302,
20.8698

■ 63.5270, -5.1538,
-0.6502

■ 38.1691, 20.0181,
21.6349

■ 66.9107, -6.8491,
-4.6399

■ 36.1561, 23.9901,
21.8429

■ 70.3735, -8.3830,
-8.8163

■ 34.3516, 28.0259,
21.6281

■ 73.9093, -9.7710,
-13.1599

■ 34.2882, 28.1728,
21.6215

■ 77.5128, -11.0272,
-17.6543

■ 80.9860, -13.2421,
-19.5912

Harmonies

Analogous

The Analogous color harmony consists of three colors that are next to each other on the color wheel.



50.9389, 9.1217, 9.2516



50.9377, 3.5916, 12.9205



50.9389, -3.3839, 13.9994

Triad

The Triadic color harmony groups three colors that are evenly spaced from another and form a triangle on the color wheel.



50.9389, 3.5898, 12.9212



50.9389, -15.5096, 2.1361



50.9389, 4.8022, -9.2364

Complementary

The Complementary color scheme is a pair of colors which are on the opposite of each other on the color wheel.



50.9377, 3.5916, 12.9205



50.5285, -6.7011, -9.0916

Split Complementary

Split-complementary colors differ from the complementary color scheme. The scheme consists of three colors, the original color and two neighbors of the complement color.



50.9389, -2.0540, -11.7862



50.9377, 3.5916, 12.9205



50.9389, -13.5713, -4.6877

Square

The Square scheme is like the rectangle color scheme, but the four colors are evenly spaced on the color wheel.



50.9389, 3.5898, 12.9212



50.9389, -14.1777, 8.2938



50.9389, -8.7382, -10.0193



50.9389, 9.8479, -3.4451

Rectangle

The Rectangle color scheme consists of four colors that form a rectangle on the color wheel.



50.9377, 3.5916, 12.9205



50.9389, -7.8501, 13.2417



50.9389, -8.7382, -10.0193



50.9389, 2.6201, -10.5340

Sweetspot

The Sweet Spot groups the original color and five complimentary colors.



50.9389, 3.5898, 12.9212



77.0303, -1.7653, 8.7811



46.5503, 17.4698, -3.6053



36.2247, -0.6423, 4.4656



90.9709, -4.8540, 4.9426



38.3822, -2.0480, 2.0854

Same Dimension

The Same Dimension uses a secret algorithm to generate beautiful new colors.



50.9389, 3.5898, 12.9212



65.8948, 7.4306, 19.9582



57.7496, -7.8252, 19.1034



27.4742, -0.6195, 3.1503



30.5674, 24.6687, 19.2674



5.3725, 1.4758, 3.3364

Inverse Universe

The Inverse Universe completely reimagines the original color for something new.



50.5285, -6.7011, -9.0916



65.2116, -9.5434, -16.4050



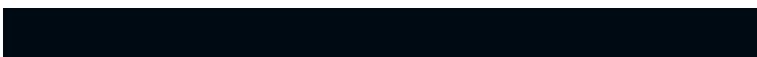
43.7530, 4.7808, -19.2769



27.4117, -2.2086, -0.2416



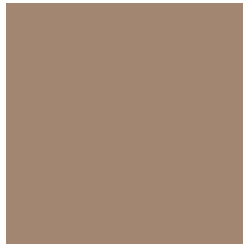
29.1841, 0.1147, -36.7251



5.1888, -1.4783, -3.2944

Previews

White Background



This preview shows how the HunterLab color 50.9377, 3.5916, 12.9205 looks on a white background.

Color Contrast Check

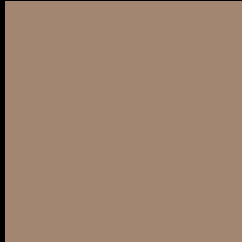
Large Text (above 18pt) WCAG AA ✓ Pass

Any Text WCAG AA × Fail

Large Text (above 18pt) WCAG AAA × Fail

Any Text WCAG AAA × Fail

Black Background



This preview shows how the HunterLab color 50.9377, 3.5916, 12.9205 looks on a black background.

Color Contrast Check

Large Text (above 18pt) WCAG AA ✓ Pass

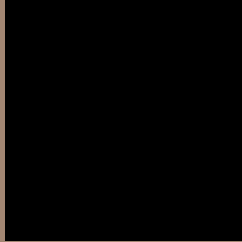
Any Text WCAG AA ✓ Pass

Large Text (above 18pt) WCAG AAA ✓ Pass

Any Text WCAG AAA × Fail

If you want to check with other color combinations, try the [Color Contrast Checker](#).

HunterLab 50.9377, 3.5916, 12.9205 Background



This preview shows how black text looks on a background with the HunterLab color 50.9377, 3.5916, 12.9205.



This preview shows how white text looks on a background with the HunterLab color 50.9377, 3.5916,

Color Blindness Simulation

Color vision deficiency is a very complex topic, and I could not describe the different causes any better than Wikipedia does, so if you want to learn more, you should check out their [article about color blindness](#).

Dichromacy



Original Color

50.9377, 3.5916, 12.9205

Protanopia

50.9437, -3.3905, 11.7451

Deuteranopia

50.9377, 3.5916, 12.9205



Tritanopia

50.8508, 10.1176, 2.5826

Trichromacy



Original Color

50.9377, 3.5916, 12.9205

Protanomaly

50.8209, -0.9635, 12.0223

Deuteranomaly

50.9377, 3.5916, 12.9205

Tritanomaly

50.7581, 7.9626, 6.3342

Monochromacy



Original Color

50.9377, 3.5916, 12.9205

Achromatopsia

51.2104, -2.7325, 2.7824

Achromatomaly

51.0995, -0.7042, 6.5604

CSS Examples

Text

The CSS property to change the color of the text to HunterLab 50.9377, 3.5916, 12.9205 is called "color". The color property can be set on classes, ids or directly on the HTML element.

This example shows how text in the color `rgb(162, 134, 114)` looks like.

```
.text, #text, p{  
    color:rgb(162, 134, 114)  
}
```

If you want to add a text shadow in that color use the text-shadow property, you can generate a text shadow directly with our [CSS Text Shadow Generator](#).

Here you see how black text with a 4 pixel rgb(162, 134, 114) colored shadow looks like.

```
.shadow{ text-shadow: 4px 4px 2px rgb(162, 134, 114) }
```

Border

The CSS property to change the border of an element to HunterLab 50.9377, 3.5916, 12.9205 is called "border". The border property can be set on classes, ids or directly on the HTML element.

This example shows the color as border, it can be applied via the CSS property "border" or "border-color".

```
.border, #border, table{ border:4px solid rgb(162, 134, 114) }
```


If only the border color should be changed use the property `border-color`.

```
.border{ border-color:rgb(162, 134, 114) }
```

If you want to add a box shadow in that color use:

Here you see how a box with a 4 pixel `rgb(162, 134, 114)` colored shadow looks like.

```
.boxshadow{ -moz-box-shadow:4px 4px 4px  
4px rgb(162, 134, 114); -webkit-box-  
shadow:4px 4px 4px 4px rgb(162, 134, 114);  
box-shadow:4px 4px 4px 4px rgb(162, 134,  
114) }
```

Background

The CSS property to change the background color of an element to HunterLab 50.9377, 3.5916, 12.9205 is called "background". The background property can be set on classes, ids or directly on the HTML element.

```
.background, #background, body{  
background: rgb(162, 134, 114) }
```

If only the background color should be changed can be used:

```
.background{ background-color: rgb(162,  
134, 114) }
```

This example shows the color as background, it is applied via the CSS property "background".

To optimize and compress your CSS code, you can use our [online CSS compressor and optimizer](#) based on csstidy. If you want to create a linear or radial gradient as background or border, check our [CSS Gradient Generator](#).

Hey! You found this booklet interesting? Support Converting Colors with the new Membership Option!

The pro membership hides all ads, plus gives you double the colors in the color bucket, and more awesome pro features!

[Learn more, Memberships starting at \\$2.50/m!](#)

**Follow me
on Twitter!**

@ConvertingColor