

Converting Colors

HunterLab(50.9519, 69.7641,
18.0982)

Have a look what the booklet for
HunterLab(50.9519, 69.7641,
18.0982) contains.

HunterLab(51.1036, 69.7981, 18.1276)	3
<i>Conversions</i>	4
<i>Details</i>	6
<i>Harmonies</i>	12
<i>Previews</i>	24
<i>Color Blindness Simulation</i>	28
<i>CSS Examples</i>	31

Color

**HunterLab(51.1036, 69.7981,
18.1276)**

Conversions

Conversions Part 1

Format	Color
Hex	FF4266
RGB	255, 66, 102
RGB Percent	100%, 26%, 40%
CMY	0.0000, 0.7411, 0.6000
CMYK	0.00, 0.74, 0.60, 0.00
HSL	349°, 100%, 63%
HSV	349°, 74%, 100%
XYZ	45.5865, 26.1158, 15.2086
YIQ	126.6150, 101.0880, 51.2640

Conversions

Conversions Part 2

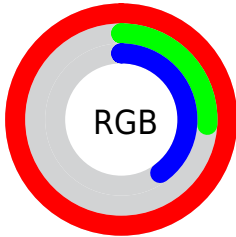
Format	Color
R_{YB}	255, 66, 102
Decimal	16728678
CIE _{Lab}	58.15, 71.78, 24.07
CIE _{LCh}	58, 75.709, 18.538
Yxy	26.1173, 0.5245, 0.3005
Android (android.graphics.Color)	4294918758 (0xFFFF4266)
YUV	126.6150, -12.1352, 112.5936
Hunter-Lab	51.1036, 69.7981, 18.1276

Details

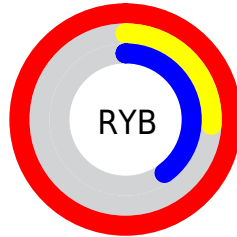
The HunterLab color **51.1036, 69.7981, 18.1276** is a dark color, and the websafe version is hex **FF3366**. The color can be described as middle washed rose. A complement of this color would be **88.2006, -51.5516, 8.3898**, and the grayscale version is **45.9385, -2.4512, 2.4959**.

A 20% lighter version of the original color is **62.4486, 47.0924, 10.6923**, and **33.7074, 58.5720, 15.2148** is the 20% darker color. If you saturate the color by 10%, you get **48.3858, 75.8549, 21.5180**, and if you desaturate by 10%, it is **55.0013, 61.4014, 14.8918**.

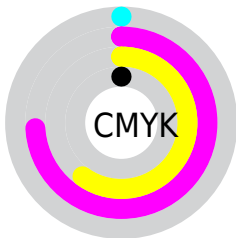
Distribution



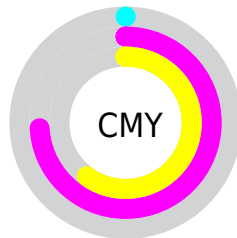
- Red (100%)
- Green (26%)
- Blue (40%)



- Red (100%)
- Yellow (26%)
- Blue (40%)



- Cyan (0%)
- Magenta (74%)
- Yellow (60%)
- Black (0%)



- Cyan (0%)
- Magenta (74%)
- Yellow (60%)

Brightness & Saturation Gradients

These gradients show how the HunterLab color 51.1036, 69.7981, 18.1276 changes by changing the brightness by 10 percent. The first figure shows a shift by +10% for each color and the second figure -10%.

Similar to the brightness gradients but the following saturation gradients show a change of the HunterLab color 51.1036, 69.7981, 18.1276 by changing the saturation by 10% instead.

■ 51.1036, 69.7981,
18.1276

■ 51.1036, 69.7981,
18.1276

168.3323, 87.0472,
34.5987

■ 41.1235, 67.4682,
16.0731

■ 73.1192, 74.2537,
22.0190

■ 31.8926, 65.1473,
13.9080

■ 85.0728, 76.3535,
23.8884

■ 23.4792, 62.9660,
11.5897

■ 97.6151, 78.3595,
25.7227

■ 15.9722, 61.2692,
9.3069

■ 110.7194, 80.2722,
27.5302

■ 9.4982, 61.1080,
6.6487

■ 124.3628, 82.0940,
29.3171

0.0000, INF, NaN

0.0000, INF, NaN

138.5246, 83.8280,

31.0883

0.0000, NaN, NaN

153.1866, 85.4779,
32.8478

0.0000, NaN, NaN

■ 51.1036, 69.7981,
18.1276

■ 51.1036, 69.7981,
18.1276

■ 48.3858, 75.8549,
21.5180

■ 55.0013, 61.4014,
14.8918

■ 46.8356, 79.0433,
24.7061

■ 59.9814, 51.5142,
12.0613

■ 46.3443, 79.8364,
26.2998

■ 65.9069, 40.8932,
9.7599

■ 72.6328, 30.0722,
8.0058

■ 80.0287, 19.3596,
6.7578

87.9851, 8.9025,
5.9512

96.4138, -1.2499,
5.5178

99.9999, -5.3359,
5.4331

Harmonies

Analogous

The Analogous color harmony consists of three colors that are next to each other on the color wheel.



51.1051, 72.7629, -10.2905



51.1036, 69.7981, 18.1276



51.1051, 44.8019, 30.0968

Triad

The Triadic color harmony groups three colors that are evenly spaced from another and form a triangle on the color wheel.



51.1051, 69.7930, 18.1287



51.1051, -41.1929, 28.3628



51.1051, -14.4066, -94.4553

Complementary

The Complementary color scheme is a pair of colors which are on the opposite of each other on the color wheel.



51.1036, 69.7981, 18.1276



88.2006, -51.5516, 8.3898

Split Complementary

Split-complementary colors differ from the complementary color scheme. The scheme consists of three colors, the original color and two neighbors of the complement color.



51.1051, -37.4630, -63.5213



51.1036, 69.7981, 18.1276



51.1051, -50.1828, 13.1125

Square

The Square scheme is like the rectangle color scheme, but the four colors are evenly spaced on the color wheel.



51.1051, 69.7930, 18.1287



51.1051, -20.8812, 32.9915



51.1051, -49.0108, -19.5826



51.1051, 18.3729, -89.8346

Rectangle

The Rectangle color scheme consists of four colors that form a rectangle on the color wheel.



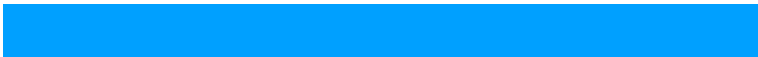
51.1036, 69.7981, 18.1276



51.1051, 21.8255, 32.7901



51.1051, -49.0108, -19.5826



51.1051, -23.3766, -87.3568

Sweetspot

The Sweet Spot groups the original color and five complimentary colors.



51.1051, 69.7930, 18.1287



81.6659, 17.1270, 6.5530



50.8928, 81.6568, -77.4277



36.8121, 9.2510, 3.1550

0.0000, NaN, NaN



46.2646, -2.4686, 2.5136

Same Dimension

The Same Dimension uses a secret algorithm to generate beautiful new colors.



51.1051, 69.7930, 18.1287



47.4881, 77.7826, 23.1250



59.7892, 42.4659, 32.4718



42.4777, 1.9367, 2.6413



33.5242, 57.7989, 18.6580



10.5286, 18.2859, 4.8238

Inverse Universe

The Inverse Universe completely reimagines the original color for something new.



51.1051, 69.7930, 18.1287



47.4881, 77.7826, 23.1250



69.9328, -18.8518, -37.4472



42.4777, 1.9367, 2.6413



33.5242, 57.7989, 18.6580



10.5286, 18.2859, 4.8238

Previews

White Background



This preview shows how the HunterLab color 51.1036, 69.7981, 18.1276 looks on a white background.

Color Contrast Check

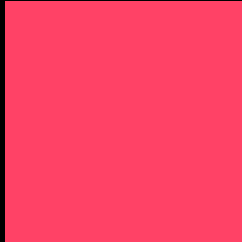
Large Text (above 18pt) WCAG AA ✓ Pass

Any Text WCAG AA × Fail

Large Text (above 18pt) WCAG AAA × Fail

Any Text WCAG AAA × Fail

Black Background



This preview shows how the HunterLab color 51.1036, 69.7981, 18.1276 looks on a black background.

Color Contrast Check

Large Text (above 18pt) WCAG AA ✓ Pass

Any Text WCAG AA ✓ Pass

Large Text (above 18pt) WCAG AAA ✓ Pass

Any Text WCAG AAA × Fail

If you want to check with other color combinations, try the [Color Contrast Checker](#).

HunterLab 51.1036, 69.7981, 18.1276 Background



This preview shows how black text looks on a background with the HunterLab color 51.1036, 69.7981, 18.1276.



This preview shows how white text looks on a background with the HunterLab color 51.1036, 69.7981,

Color Blindness Simulation

Color vision deficiency is a very complex topic, and I could not describe the different causes any better than Wikipedia does, so if you want to learn more, you should check out their [article about color blindness](#).

Dichromacy



Original Color

51.1036, 69.7981, 18.1276

Protanopia

51.1310, -1.8285, 4.8954

Deuteranopia

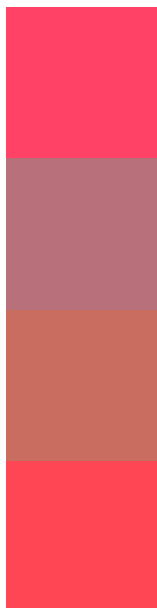
51.1521, 3.4793, 19.5771



Tritanopia

51.1992, 65.4075, 24.9852

Trichromacy



Original Color

51.1036, 69.7981, 18.1276

Protanomaly

48.1755, 23.6496, 7.0374

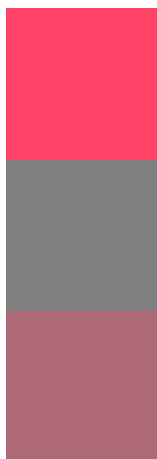
Deuteranomaly

49.0522, 28.4204, 17.3473

Tritanomaly

51.0950, 66.7528, 22.6804

Monochromacy



Original Color

51.1036, 69.7981, 18.1276

Achromatopsia

46.0685, -2.4581, 2.5030

Achromatomaly

45.1772, 22.7881, 5.7432

CSS Examples

Text

The CSS property to change the color of the text to HunterLab 51.1036, 69.7981, 18.1276 is called "color". The color property can be set on classes, ids or directly on the HTML element.

This example shows how text in the color `rgb(255, 66, 102)` looks like.

```
.text, #text, p{  
    color:rgb(255, 66, 102)  
}
```

If you want to add a text shadow in that color use the text-shadow property, you can generate a text shadow directly with our [CSS Text Shadow Generator](#).

Here you see how black text with a 4 pixel rgb(255, 66, 102) colored shadow looks like.

```
.shadow{ text-shadow: 4px 4px 2px rgb(255, 66, 102) }
```

Border

The CSS property to change the border of an element to HunterLab 51.1036, 69.7981, 18.1276 is called "border". The border property can be set on classes, ids or directly on the HTML element.

This example shows the color as border, it can be applied via the CSS property "border" or "border-color".

```
.border, #border, table{ border:4px solid rgb(255, 66, 102) }
```


If only the border color should be changed use the property border-color.

```
.border{ border-color:rgb(255, 66, 102) }
```

If you want to add a box shadow in that color use:

Here you see how a box with a 4 pixel rgb(255, 66, 102) colored shadow looks like.

```
.boxshadow{ -moz-box-shadow:4px 4px 4px  
4px rgb(255, 66, 102); -webkit-box-  
shadow:4px 4px 4px 4px rgb(255, 66, 102);  
box-shadow:4px 4px 4px 4px rgb(255, 66,  
102) }
```

Background

The CSS property to change the background color of an element to HunterLab 51.1036, 69.7981, 18.1276 is called "background". The background property can be set on classes, ids or directly on the HTML element.

```
.background, #background, body{  
background: rgb(255, 66, 102) }
```

If only the background color should be changed can be used:

```
.background{ background-color: rgb(255, 66,  
102) }
```

This example shows the color as background, it is applied via the CSS property "background".

To optimize and compress your CSS code, you can use our [online CSS compressor and optimizer](#) based on csstidy. If you want to create a linear or radial gradient as background or border, check our [CSS Gradient Generator](#).

Hey! You found this booklet interesting? Support Converting Colors with the new Membership Option!

The pro membership hides all ads, plus gives you double the colors in the color bucket, and more awesome pro features!

[Learn more, Memberships starting at \\$2.50/m!](#)

**Follow me
on Twitter!**

@ConvertingColor