

Converting Colors

HunterLab(50.9547, 45.9946,
9.7415)

Have a look what the booklet for
HunterLab(50.9547, 45.9946,
9.7415) contains.

HunterLab(50.8960, 45.9602, 9.5646)	3
<i>Conversions</i>	4
<i>Details</i>	6
<i>Harmonies</i>	12
<i>Previews</i>	24
<i>Color Blindness Simulation</i>	28
<i>CSS Examples</i>	31

Color

**HunterLab(50.8960, 45.9602,
9.5646)**

Conversions

Conversions Part 1

Format	Color
Hex	DF627D
RGB	223, 98, 125
RGB Percent	87%, 38%, 49%
CMY	0.1255, 0.6157, 0.5098
CMYK	0.00, 0.56, 0.44, 0.13
HSL	347°, 66%, 63%
HSV	347°, 56%, 87%
XYZ	38.5008, 25.9040, 22.3728
YIQ	138.4530, 65.8330, 34.8970

Conversions

Conversions Part 2

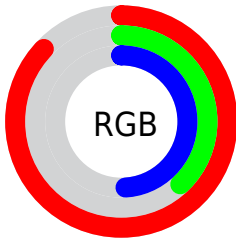
Format	Color
R_{YB}	223, 98, 125
Decimal	14639741
CIE _{Lab}	57.95, 51.22, 9.48
CIE _{LCh}	58, 52.087, 10.482
Yxy	25.9054, 0.4437, 0.2985
Android (android.graphics.Color)	4292829821 (0xFFDF627D)
YUV	138.4530, -6.6323, 74.1477
Hunter-Lab	50.8960, 45.9602, 9.5646

Details

The HunterLab color **50.8960, 45.9602, 9.5646** is a dark color, and the websafe version is hex **FF6699**. A complement of this color would be **77.0443, -38.9331, 6.5999**, and the grayscale version is **50.6023, -2.7000, 2.7493**.

A 20% lighter version of the original color is **68.7145, 37.0850, 7.1007**, and **31.7336, 42.5782, 7.5246** is the 20% darker color. If you saturate the color by 10%, you get **46.7857, 54.2415, 11.9701**, and if you desaturate by 10%, it is **55.8234, 36.9396, 7.6613**.

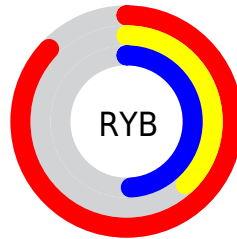
Distribution



Red (87%)

Green (38%)

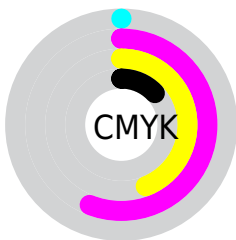
Blue (49%)



Red (87%)

Yellow (38%)

Blue (49%)

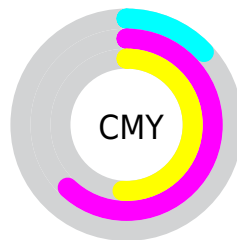


Cyan (0%)

Magenta (56%)

Yellow (44%)

Black (13%)



Cyan (13%)

Magenta (62%)

Yellow (51%)

Brightness & Saturation Gradients

These gradients show how the HunterLab color 50.8960, 45.9602, 9.5646 changes by changing the brightness by 10 percent. The first figure shows a shift by +10% for each color and the second figure -10%.

Similar to the brightness gradients but the following saturation gradients show a change of the HunterLab color 50.8960, 45.9602, 9.5646 by changing the saturation by 10% instead.

50.8960, 45.9602,
9.5646

50.8960, 45.9602,
9.5646

168.0230, 57.6098,
19.6930

40.9303, 44.1634,
8.4721

72.8850, 49.2125,
11.7514

31.7151, 42.2680,
7.3680

84.8266, 50.6808,
12.8523

23.3190, 40.3048,
6.2403

97.3572, 52.0502,
13.9622

15.8313, 38.3837,
5.0654

110.4505, 53.3265,
15.0828

9.3798, 36.8872,
4.6982

124.0833, 54.5155,
16.2154

0.0000, INF, NaN

0.0000, NaN, NaN

138.2349, 55.6225,

17.3609

0.0000, NaN, NaN

152.8870, 56.6525,
18.5199

0.0000, NaN, NaN

■ 50.8960, 45.9602,
9.5646

■ 50.8960, 45.9602,
9.5646

■ 46.7857, 54.2415,
11.9701

■ 55.8234, 36.9396,
7.6613

■ 43.6007, 61.1334,
14.7734

■ 61.4428, 27.6730,
6.2666

■ 41.4109, 65.9479,
17.7590

■ 67.6441, 18.4475,
5.3391

■ 40.1940, 68.2988,
20.6195

■ 74.3330, 9.4096,
4.8168

■ 39.8782, 68.8310,
21.5947

■ 81.4328, 0.6153,
4.6357

■ 88.8823, -7.9290,
4.7383

■ 96.6329, -16.2411,
5.0764

■ 97.1741, -15.3107,
1.8860

Harmonies

Analogous

The Analogous color harmony consists of three colors that are next to each other on the color wheel.



50.8973, 43.6443, -12.6046



50.8960, 45.9602, 9.5646



50.8973, 33.6496, 22.5937

Triad

The Triadic color harmony groups three colors that are evenly spaced from another and form a triangle on the color wheel.



50.8973, 45.9567, 9.5657



50.8973, -27.3894, 24.8689



50.8973, -16.1044, -51.6786

Complementary

The Complementary color scheme is a pair of colors which are on the opposite of each other on the color wheel.



50.8960, 45.9602, 9.5646



77.0443, -38.9331, 6.5999

Split Complementary

Split-complementary colors differ from the complementary color scheme. The scheme consists of three colors, the original color and two neighbors of the complement color.



50.8973, -31.0818, -30.9211



50.8960, 45.9602, 9.5646



50.8973, -36.7895, 14.4724

Square

The Square scheme is like the rectangle color scheme, but the four colors are evenly spaced on the color wheel.



50.8973, 45.9567, 9.5657



50.8973, -10.1933, 28.5919



50.8973, -38.0153, -5.1137



50.8973, 5.2143, -54.8670

Rectangle

The Rectangle color scheme consists of four colors that form a rectangle on the color wheel.



50.8960, 45.9602, 9.5646



50.8973, 19.8641, 26.8323



50.8973, -38.0153, -5.1137



50.8973, -21.9422, -46.2085

Sweetspot

The Sweet Spot groups the original color and five complimentary colors.



50.8973, 45.9567, 9.5657



85.6699, 12.0736, 5.6525



50.7831, 53.2435, -49.2820



38.8915, 6.5638, 2.6602

0.0000, NaN, NaN



46.2646, -2.4686, 2.5136

Same Dimension

The Same Dimension uses a secret algorithm to generate beautiful new colors.



50.8973, 45.9567, 9.5657



53.8568, 64.4281, 14.3837



57.8453, 25.5416, 24.2454



37.0793, 1.6782, 2.1891



30.6010, 52.8624, 16.2291



8.1383, 14.2188, 3.0740

Inverse Universe

The Inverse Universe completely reimagines the original color for something new.



50.8973, 45.9567, 9.5657



53.8568, 64.4281, 14.3837



66.1168, -17.8329, -22.1750



37.0793, 1.6782, 2.1891



30.6010, 52.8624, 16.2291



8.1383, 14.2188, 3.0740

Previews

White Background



This preview shows how the HunterLab color 50.8960, 45.9602, 9.5646 looks on a white background.

Color Contrast Check

Large Text (above 18pt) WCAG AA ✓ Pass

Any Text WCAG AA × Fail

Large Text (above 18pt) WCAG AAA × Fail

Any Text WCAG AAA × Fail

Black Background



This preview shows how the HunterLab color 50.8960, 45.9602, 9.5646 looks on a black background.

Color Contrast Check

Large Text (above 18pt) WCAG AA ✓ Pass

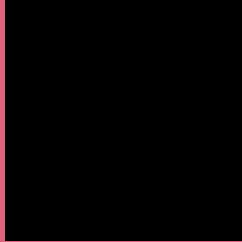
Any Text WCAG AA ✓ Pass

Large Text (above 18pt) WCAG AAA ✓ Pass

Any Text WCAG AAA × Fail

If you want to check with other color combinations, try the [Color Contrast Checker](#).

HunterLab 50.8960, 45.9602, 9.5646 Background



This preview shows how black text looks on a background with the HunterLab color 50.8960, 45.9602, 9.5646.



This preview shows how white text looks on a background with the HunterLab color 50.8960, 45.9602,

Color Blindness Simulation

Color vision deficiency is a very complex topic, and I could not describe the different causes any better than Wikipedia does, so if you want to learn more, you should check out their [article about color blindness](#).

Dichromacy



Original Color

50.8960, 45.9602, 9.5646

Protanopia

51.1344, -1.1180, -0.5172

Deuteranopia

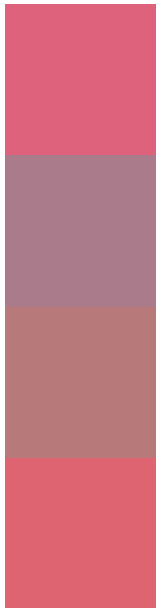
50.8485, 3.5222, 11.0441



Tritanopia

50.9114, 42.3298, 15.5902

Trichromacy



Original Color

50.8960, 45.9602, 9.5646

Protanomaly

49.8251, 14.7126, 1.8935

Deuteranomaly

50.1224, 18.4727, 9.8108

Tritanomaly

50.8516, 43.4102, 13.5332

Monochromacy



Original Color

50.8960, 45.9602, 9.5646

Achromatopsia

50.4135, -2.6899, 2.7391

Achromatomaly

49.2893, 13.9816, 3.9240

CSS Examples

Text

The CSS property to change the color of the text to HunterLab 50.8960, 45.9602, 9.5646 is called "color". The color property can be set on classes, ids or directly on the HTML element.

This example shows how text in the color `rgb(223, 98, 125)` looks like.

```
.text, #text, p{  
    color:rgb(223, 98, 125)  
}
```

If you want to add a text shadow in that color use the text-shadow property, you can generate a text shadow directly with our [CSS Text Shadow Generator](#).

Here you see how black text with a 4 pixel rgb(223, 98, 125) colored shadow looks like.

```
.shadow{ text-shadow: 4px 4px 2px rgb(223, 98, 125) }
```

Border

The CSS property to change the border of an element to HunterLab 50.8960, 45.9602, 9.5646 is called "border". The border property can be set on classes, ids or directly on the HTML element.

This example shows the color as border, it can be applied via the CSS property "border" or "border-color".

```
.border, #border, table{ border:4px solid rgb(223, 98, 125) }
```


If only the border color should be changed use the property border-color.

```
.border{ border-color:rgb(223, 98, 125) }
```

If you want to add a box shadow in that color use:

Here you see how a box with a 4 pixel rgb(223, 98, 125) colored shadow looks like.

```
.boxshadow{ -moz-box-shadow:4px 4px 4px  
4px rgb(223, 98, 125); -webkit-box-  
shadow:4px 4px 4px 4px rgb(223, 98, 125);  
box-shadow:4px 4px 4px 4px rgb(223, 98,  
125) }
```

Background

The CSS property to change the background color of an element to HunterLab 50.8960, 45.9602, 9.5646 is called "background". The background property can be set on classes, ids or directly on the HTML element.

```
.background, #background, body{  
background: rgb(223, 98, 125) }
```

If only the background color should be changed can be used:

```
.background{ background-color: rgb(223, 98,  
125) }
```

This example shows the color as background, it is applied via the CSS property "background".

To optimize and compress your CSS code, you can use our [online CSS compressor and optimizer](#) based on csstidy. If you want to create a linear or radial gradient as background or border, check our [CSS Gradient Generator](#).

Hey! You found this booklet interesting? Support Converting Colors with the new Membership Option!

The pro membership hides all ads, plus gives you double the colors in the color bucket, and more awesome pro features!

[Learn more, Memberships starting at \\$2.50/m!](#)

**Follow me
on Twitter!**

@ConvertingColor