

Converting Colors

HunterLab(50.9912, 6.0132,
17.8690)

Have a look what the booklet for
HunterLab(50.9912, 6.0132,
17.8690) contains.

HunterLab(51.0503, 6.1109, 17.8543)	3
<i>Conversions</i>	4
<i>Details</i>	6
<i>Harmonies</i>	12
<i>Previews</i>	24
<i>Color Blindness Simulation</i>	28
<i>CSS Examples</i>	31

Color

**HunterLab(51.0503, 6.1109,
17.8543)**

Conversions

Conversions Part 1

Format	Color
Hex	AB8463
RGB	171, 132, 99
RGB Percent	67%, 52%, 39%
CMY	0.3294, 0.4823, 0.6118
CMYK	0.00, 0.23, 0.42, 0.33
HSL	28°, 30%, 53%
HSV	28°, 42%, 67%
XYZ	27.2980, 26.0613, 15.3959
YIQ	139.8990, 33.8370, -1.9950

Conversions

Conversions Part 2

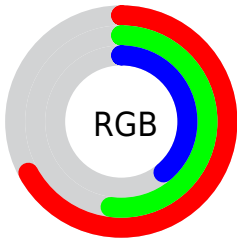
Format	Color
RYB	171, 160, 99
Decimal	11240547
CIELab	58.10, 10.51, 23.56
CIElCh	58, 25.795, 65.955
Yxy	26.0626, 0.3970, 0.3790
Android (android.graphics.Color)	4289430627 (0xFFAB8463)
YUV	139.8990, -20.1632, 27.2756
Hunter-Lab	51.0503, 6.1109, 17.8543

Details

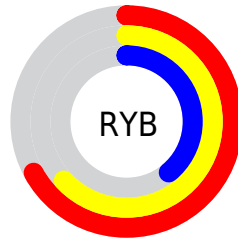
The HunterLab color **51.0503, 6.1109, 17.8543** is a dark color, and the websafe version is hex **CC9966**. A complement of this color would be **48.7535, -6.2920, -16.9232**, and the grayscale version is **51.2395, -2.7340, 2.7839**.

A 20% lighter version of the original color is **73.0711, 6.1117, 21.7208**, and **31.9630, 5.7698, 13.7701** is the 20% darker color. If you saturate the color by 10%, you get **48.3403, 9.0663, 20.1791**, and if you desaturate by 10%, it is **53.8977, 3.4346, 15.0616**.

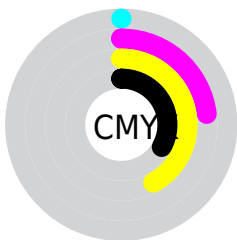
Distribution



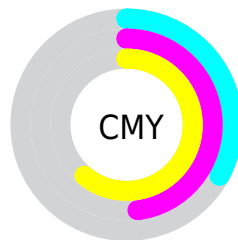
- Red (67%)
- Green (52%)
- Blue (39%)



- Red (67%)
- Yellow (63%)
- Blue (39%)



- Cyan (0%)
- Magenta (23%)
- Yellow (42%)
- Black (33%)



- Cyan (33%)
- Magenta (48%)
- Yellow (61%)

Brightness & Saturation Gradients

These gradients show how the HunterLab color 51.0503, 6.1109, 17.8543 changes by changing the brightness by 10 percent. The first figure shows a shift by +10% for each color and the second figure -10%.

Similar to the brightness gradients but the following saturation gradients show a change of the HunterLab color 51.0503, 6.1109, 17.8543 by changing the saturation by 10% instead.

■ 51.0503, 6.1109,
17.8543

■ 51.0503, 6.1109,
17.8543

168.2525, 3.9288,
34.0932

■ 41.0737, 6.0657,
15.8345

■ 73.0588, 5.9859,
21.6829

■ 31.8468, 5.9397,
13.7080

■ 85.0093, 5.8341,
23.5241

■ 23.4378, 5.7163,
11.4325

■ 97.5486, 5.6292,
25.3320

■ 15.9359, 5.3742,
9.1668

■ 110.6501, 5.3751,
27.1144

■ 9.4676, 4.8808,
6.6273

124.2907, 5.0754,
28.8773

0.0000, INF, NaN

0.0000, NaN, NaN

138.4499, 4.7328,

30.6257

0.0000, NaN, NaN

153.1094, 4.3499,
32.3633

0.0000, NaN, NaN

■ 51.0503, 6.1109,
17.8543

■ 51.0503, 6.1109,
17.8543

■ 48.3403, 9.0663,
20.1791

■ 53.8977, 3.4346,
15.0616

■ 45.7769, 12.3126,
21.9848

■ 56.8669, 1.0313,
11.8473

■ 43.3749, 15.8418,
23.2265

■ 59.9485, -1.1177,
8.2573

■ 41.1481, 19.6315,
23.8705

■ 63.1330, -3.0307,
4.3324

■ 39.1095, 23.6353,
23.9096

■ 66.4116, -4.7266,
0.1088

■ 37.6317, 26.8595,
23.6587

■ 69.7768, -6.2238,
-4.3820

■ 73.2220, -7.5398,
-9.1124

■ 76.7411, -8.6910,
-14.0587

■ 80.3289, -9.6921,
-19.2002

Harmonies

Analogous

The Analogous color harmony consists of three colors that are next to each other on the color wheel.



51.0515, 15.3960, 13.1657



51.0503, 6.1109, 17.8543



51.0515, -4.8856, 18.9141

Triad

The Triadic color harmony groups three colors that are evenly spaced from another and form a triangle on the color wheel.



51.0515, 6.1088, 17.8550



51.0515, -21.9678, 0.6642



51.0515, 10.1887, -16.1665

Complementary

The Complementary color scheme is a pair of colors which are on the opposite of each other on the color wheel.



51.0503, 6.1109, 17.8543



48.7535, -6.2920, -16.9232

Split Complementary

Split-complementary colors differ from the complementary color scheme. The scheme consists of three colors, the original color and two neighbors of the complement color.



51.0515, -0.5313, -21.3314



51.0503, 6.1109, 17.8543



51.0515, -18.6282, -10.3871

Square

The Square scheme is like the rectangle color scheme, but the four colors are evenly spaced on the color wheel.



51.0515, 6.1088, 17.8550



51.0515, -20.5129, 10.2623



51.0515, -10.9994, -19.0206



51.0515, 17.8866, -6.0431

Rectangle

The Rectangle color scheme consists of four colors that form a rectangle on the color wheel.



51.0503, 6.1109, 17.8543



51.0515, -11.5907, 17.6673



51.0515, -10.9994, -19.0206



51.0515, 6.7865, -18.6272

Sweetspot

The Sweet Spot groups the original color and five complimentary colors.



51.0515, 6.1088, 17.8550



79.7558, -1.1884, 11.6144



44.0843, 27.6729, -4.9968



37.2388, -0.2774, 5.9880



93.2148, -4.9737, 5.0645



40.3295, -2.1519, 2.1912

Same Dimension

The Same Dimension uses a secret algorithm to generate beautiful new colors.



51.0515, 6.1088, 17.8550



64.7637, 12.0490, 26.9486



61.1090, -10.7258, 26.0140



29.3216, -0.8072, 3.4678



32.8309, 22.9400, 20.6318



6.4035, 1.7963, 3.9772

Inverse Universe

The Inverse Universe completely reimagines the original color for something new.



48.7535, -6.2920, -16.9232



61.0270, -7.9123, -29.5719



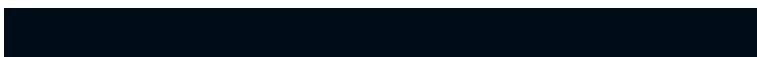
39.0056, 10.9422, -34.3377



29.0669, -2.2012, -0.3892



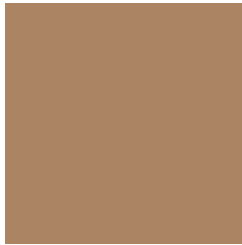
28.5899, 3.1618, -42.5604



5.7892, -1.1619, -4.7279

Previews

White Background



This preview shows how the HunterLab color 51.0503, 6.1109, 17.8543 looks on a white background.

Color Contrast Check

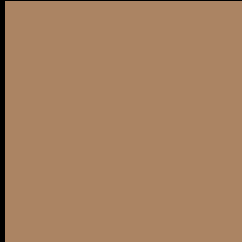
Large Text (above 18pt) WCAG AA ✓ Pass

Any Text WCAG AA × Fail

Large Text (above 18pt) WCAG AAA × Fail

Any Text WCAG AAA × Fail

Black Background



This preview shows how the HunterLab color 51.0503, 6.1109, 17.8543 looks on a black background.

Color Contrast Check

Large Text (above 18pt) WCAG AA ✓ Pass

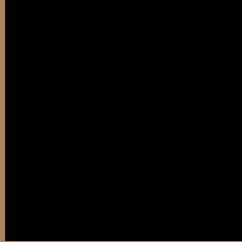
Any Text WCAG AA ✓ Pass

Large Text (above 18pt) WCAG AAA ✓ Pass

Any Text WCAG AAA × Fail

If you want to check with other color combinations, try the [Color Contrast Checker](#).

HunterLab 51.0503, 6.1109, 17.8543 Background



This preview shows how black text looks on a background with the HunterLab color 51.0503, 6.1109, 17.8543.



This preview shows how white text looks on a background with the HunterLab color 51.0503, 6.1109,

Color Blindness Simulation

Color vision deficiency is a very complex topic, and I could not describe the different causes any better than Wikipedia does, so if you want to learn more, you should check out their [article about color blindness](#).

Dichromacy



Original Color

51.0503, 6.1109, 17.8543

Protanopia

51.1855, -4.6443, 16.8982

Deuteranopia

51.0471, 3.3430, 17.8030



Tritanopia

51.0870, 14.6638, 4.2692

Trichromacy



Original Color

51.0503, 6.1109, 17.8543

Protanomaly

51.0882, -0.6746, 17.1800

Deuteranomaly

50.9909, 4.5410, 17.7743

Tritanomaly

51.1168, 11.3981, 9.9623

Monochromacy



Original Color

51.0503, 6.1109, 17.8543

Achromatopsia

51.2104, -2.7325, 2.7824

Achromatomaly

50.9424, -0.1143, 8.8072

CSS Examples

Text

The CSS property to change the color of the text to HunterLab 51.0503, 6.1109, 17.8543 is called "color". The color property can be set on classes, ids or directly on the HTML element.

This example shows how text in the color `rgb(171, 132, 99)` looks like.

```
.text, #text, p{  
    color:rgb(171, 132, 99)  
}
```

If you want to add a text shadow in that color use the text-shadow property, you can generate a text shadow directly with our [CSS Text Shadow Generator](#).

Here you see how black text with a 4 pixel rgb(171, 132, 99) colored shadow looks like.

```
.shadow{ text-shadow: 4px 4px 2px rgb(171, 132, 99) }
```

Border

The CSS property to change the border of an element to HunterLab 51.0503, 6.1109, 17.8543 is called "border". The border property can be set on classes, ids or directly on the HTML element.

This example shows the color as border, it can be applied via the CSS property "border" or "border-color".

```
.border, #border, table{ border:4px solid rgb(171, 132, 99) }
```


If only the border color should be changed use the property `border-color`.

```
.border{ border-color:rgb(171, 132, 99) }
```

If you want to add a box shadow in that color use:

Here you see how a box with a 4 pixel `rgb(171, 132, 99)` colored shadow looks like.

```
.boxshadow{ -moz-box-shadow:4px 4px 4px  
4px rgb(171, 132, 99); -webkit-box-  
shadow:4px 4px 4px 4px rgb(171, 132, 99);  
box-shadow:4px 4px 4px 4px rgb(171, 132,  
99) }
```

Background

The CSS property to change the background color of an element to HunterLab 51.0503, 6.1109, 17.8543 is called "background". The background property can be set on classes, ids or directly on the HTML element.

```
.background, #background, body{  
background: rgb(171, 132, 99) }
```

If only the background color should be changed can be used:

```
.background{ background-color: rgb(171,  
132, 99) }
```

This example shows the color as background, it is applied via the CSS property "background".

To optimize and compress your CSS code, you can use our [online CSS compressor and optimizer](#) based on csstidy. If you want to create a linear or radial gradient as background or border, check our [CSS Gradient Generator](#).

Hey! You found this booklet interesting? Support Converting Colors with the new Membership Option!

The pro membership hides all ads, plus gives you double the colors in the color bucket, and more awesome pro features!

[Learn more, Memberships starting at \\$2.50/m!](#)

**Follow me
on Twitter!**

@ConvertingColor