

Converting Colors

HunterLab(51.0163, 50.7290,
2.7768)

Have a look what the booklet for
HunterLab(51.0163, 50.7290,
2.7768) contains.

HunterLab(50.9568, 50.7219, 2.5111)	3
<i>Conversions</i>	4
<i>Details</i>	6
<i>Harmonies</i>	12
<i>Previews</i>	24
<i>Color Blindness Simulation</i>	28
<i>CSS Examples</i>	31

Color

**HunterLab(50.9568, 50.7219,
2.5111)**

Conversions

Conversions Part 1

Format	Color
Hex	E15E8E
RGB	225, 94, 142
RGB Percent	88%, 37%, 56%
CMY	0.1176, 0.6313, 0.4431
CMYK	0.00, 0.58, 0.37, 0.12
HSL	338°, 69%, 63%
HSV	338°, 58%, 88%
XYZ	39.9365, 25.9660, 28.4982
YIQ	138.6410, 62.6680, 42.7000

Conversions

Conversions Part 2

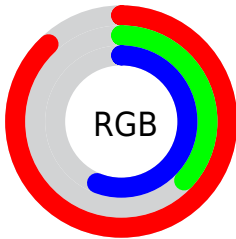
Format	Color
R _Y B	225, 94, 142
Decimal	14769806
CIE Lab	58.01, 55.51, -0.34
CIE LCh	58, 55.508, 359.652
Yxy	25.9673, 0.4230, 0.2751
Android (android.graphics.Color)	4292959886 (0xFFE15E8E)
YUV	138.6410, 1.6560, 75.7368
Hunter-Lab	50.9568, 50.7219, 2.5111

Details

The HunterLab color **50.9568, 50.7219, 2.5111** is a light color, and the websafe version is hex **FF6699**. The color can be described as light muted rose. A complement of this color would be **77.0747, -43.4509, 14.7325**, and the grayscale version is **50.6462, -2.7024, 2.7517**.

A 20% lighter version of the original color is **68.3670, 42.1070, -2.4262**, and **31.8456, 46.7803, 1.5911** is the 20% darker color. If you saturate the color by 10%, you get **47.0432, 58.8878, 4.3913**, and if you desaturate by 10%, it is **55.6998, 41.5377, 1.4478**.

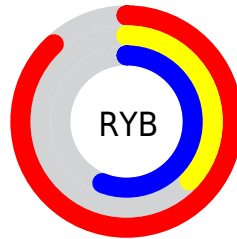
Distribution



Red (88%)

Green (37%)

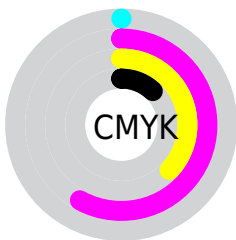
Blue (56%)



Red (88%)

Yellow (37%)

Blue (56%)

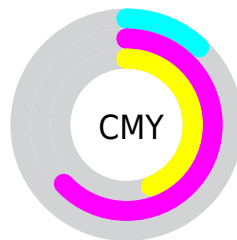


Cyan (0%)

Magenta (58%)

Yellow (37%)

Black (12%)



Cyan (12%)

Magenta (63%)

Yellow (44%)

Brightness & Saturation Gradients

These gradients show how the HunterLab color 50.9568, 50.7219, 2.5111 changes by changing the brightness by 10 percent. The first figure shows a shift by +10% for each color and the second figure -10%.

Similar to the brightness gradients but the following saturation gradients show a change of the HunterLab color 50.9568, 50.7219, 2.5111 by changing the saturation by 10% instead.

■ 50.9568, 50.7219,
2.5111

■ 50.9568, 50.7219,
2.5111

168.1135, 63.6198,
8.7622

■ 40.9868, 48.7933,
1.9878

■ 72.9536, 54.2551,
3.6766

■ 31.7670, 46.7808,
1.5056

■ 84.8986, 55.8660,
4.3116

■ 23.3658, 44.7314,
1.0699

■ 97.4327, 57.3772,
4.9793

■ 15.8725, 42.7929,
0.6862

■ 110.5292, 58.7941,
5.6783

■ 9.4144, 41.4556,
0.3627

124.1651, 60.1218,
6.4073

0.0000, INF, NaN

138.3197, 61.3656,

0.0000, INF, NaN

7.1649

0.0000, NaN, NaN

152.9747, 62.5302,
7.9502

0.0000, NaN, NaN

■ 50.9568, 50.7219,
2.5111

■ 50.9568, 50.7219,
2.5111

■ 47.0432, 58.8878,
4.3913

■ 55.6998, 41.5377,
1.4478

■ 44.0546, 65.3578,
7.0706

■ 61.1529, 31.8920,
1.1213

■ 42.0408, 69.4944,
10.3924

■ 67.2072, 22.1382,
1.4207

■ 40.9268, 71.1436,
14.0215

■ 73.7675, 12.4759,
2.2322

■ 40.7718, 71.3334,
14.6371

■ 80.7548, 2.9984,
3.4566

■ 88.1057, -6.2637,
5.0130

■ 95.7695, -15.3133,
6.8378

■ 97.3384, -14.7226,
2.0949

Harmonies

Analogous

The Analogous color harmony consists of three colors that are next to each other on the color wheel.



50.9581, 42.3676, -24.0353



50.9568, 50.7219, 2.5111



50.9581, 42.7306, 19.7707

Triad

The Triadic color harmony groups three colors that are evenly spaced from another and form a triangle on the color wheel.



50.9581, 50.7184, 2.5124



50.9581, -23.1830, 27.7565



50.9581, -23.5788, -49.9261

Complementary

The Complementary color scheme is a pair of colors which are on the opposite of each other on the color wheel.



50.9568, 50.7219, 2.5111



77.0747, -43.4509, 14.7325

Split Complementary

Split-complementary colors differ from the complementary color scheme. The scheme consists of three colors, the original color and two neighbors of the complement color.



50.9581, -36.3115, -23.3659



50.9568, 50.7219, 2.5111



50.9581, -36.1137, 20.0472

Square

The Square scheme is like the rectangle color scheme, but the four colors are evenly spaced on the color wheel.



50.9581, 50.7184, 2.5124



50.9581, -2.4473, 29.7379



50.9581, -40.4555, 3.0338



50.9581, -2.9955, -61.5430

Rectangle

The Rectangle color scheme consists of four colors that form a rectangle on the color wheel.



50.9568, 50.7219, 2.5111



50.9581, 29.9137, 25.8448



50.9581, -40.4555, 3.0338



50.9581, -28.7734, -41.9939

Sweetspot

The Sweet Spot groups the original color and five complimentary colors.



50.9581, 50.7184, 2.5124



85.8765, 13.1640, 2.7064



47.7352, 50.0282, -58.1870



38.9981, 7.1233, 1.1403

0.0000, NaN, NaN



46.2646, -2.4686, 2.5136

Same Dimension

The Same Dimension uses a secret algorithm to generate beautiful new colors.



50.9581, 50.7184, 2.5124



53.3367, 69.7569, 5.6836



53.1867, 37.1677, 21.6172



37.1257, 1.9275, 1.5279



30.9835, 54.2720, 10.6269



8.2598, 14.6640, 1.3147

Inverse Universe

The Inverse Universe completely reimagines the original color for something new.



50.9581, 50.7184, 2.5124



53.3367, 69.7569, 5.6836



72.5957, -27.0913, -13.9192



37.1257, 1.9275, 1.5279



30.9835, 54.2720, 10.6269



8.2598, 14.6640, 1.3147

Previews

White Background



This preview shows how the HunterLab color 50.9568, 50.7219, 2.5111 looks on a white background.

Color Contrast Check

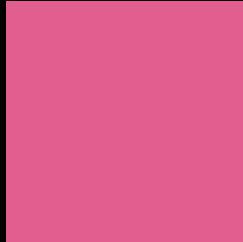
Large Text (above 18pt) WCAG AA ✓ Pass

Any Text WCAG AA × Fail

Large Text (above 18pt) WCAG AAA × Fail

Any Text WCAG AAA × Fail

Black Background



This preview shows how the HunterLab color 50.9568, 50.7219, 2.5111 looks on a black background.

Color Contrast Check

Large Text (above 18pt) WCAG AA ✓ Pass

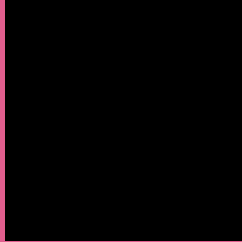
Any Text WCAG AA ✓ Pass

Large Text (above 18pt) WCAG AAA ✓ Pass

Any Text WCAG AAA × Fail

If you want to check with other color combinations, try the [Color Contrast Checker](#).

HunterLab 50.9568, 50.7219, 2.5111 Background



This preview shows how black text looks on a background with the HunterLab color 50.9568, 50.7219, 2.5111.



This preview shows how white text looks on a background with the HunterLab color 50.9568, 50.7219,

2.5111.

Color Blindness Simulation

Color vision deficiency is a very complex topic, and I could not describe the different causes any better than Wikipedia does, so if you want to learn more, you should check out their [article about color blindness](#).

Dichromacy



Original Color

50.9568, 50.7219, 2.5111

Protanopia

51.2995, 0.9275, -11.7561

Deuteranopia

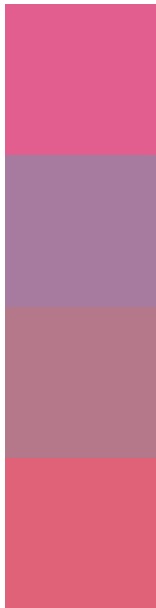
51.0628, 3.7147, 4.4842



Tritanopia

50.9114, 42.3298, 15.5902

Trichromacy



Original Color

50.9568, 50.7219, 2.5111

Protanomaly

49.7756, 17.1291, -8.0993

Deuteranomaly

49.9712, 20.1633, 2.6163

Tritanomaly

50.7734, 45.4054, 11.3314

Monochromacy



Original Color

50.9568, 50.7219, 2.5111

Achromatopsia

50.8117, -2.7112, 2.7607

Achromatomaly

49.6038, 15.3699, 1.1790

CSS Examples

Text

The CSS property to change the color of the text to HunterLab 50.9568, 50.7219, 2.5111 is called "color". The color property can be set on classes, ids or directly on the HTML element.

This example shows how text in the color `rgb(225, 94, 142)` looks like.

```
.text, #text, p{  
    color:rgb(225, 94, 142)  
}
```

If you want to add a text shadow in that color use the text-shadow property, you can generate a text shadow directly with our [CSS Text Shadow Generator](#).

Here you see how black text with a 4 pixel rgb(225, 94, 142) colored shadow looks like.

```
.shadow{ text-shadow: 4px 4px 2px rgb(225, 94, 142) }
```

Border

The CSS property to change the border of an element to HunterLab 50.9568, 50.7219, 2.5111 is called "border". The border property can be set on classes, ids or directly on the HTML element.

This example shows the color as border, it can be applied via the CSS property "border" or "border-color".

```
.border, #border, table{ border:4px solid rgb(225, 94, 142) }
```


If only the border color should be changed use the property `border-color`.

```
.border{ border-color:rgb(225, 94, 142) }
```

If you want to add a box shadow in that color use:

Here you see how a box with a 4 pixel `rgb(225, 94, 142)` colored shadow looks like.

```
.boxshadow{ -moz-box-shadow:4px 4px 4px  
4px rgb(225, 94, 142); -webkit-box-  
shadow:4px 4px 4px 4px rgb(225, 94, 142);  
box-shadow:4px 4px 4px 4px rgb(225, 94,  
142) }
```

Background

The CSS property to change the background color of an element to HunterLab 50.9568, 50.7219, 2.5111 is called "background". The background property can be set on classes, ids or directly on the HTML element.

```
.background, #background, body{  
background: rgb(225, 94, 142) }
```

If only the background color should be changed can be used:

```
.background{ background-color: rgb(225, 94,  
142) }
```

This example shows the color as background, it is applied via the CSS property "background".

To optimize and compress your CSS code, you can use our [online CSS compressor and optimizer](#) based on csstidy. If you want to create a linear or radial gradient as background or border, check our [CSS Gradient Generator](#).

Hey! You found this booklet interesting? Support Converting Colors with the new Membership Option!

The pro membership hides all ads, plus gives you double the colors in the color bucket, and more awesome pro features!

[Learn more, Memberships starting at \\$2.50/m!](#)

**Follow me
on Twitter!**

@ConvertingColor