

Converting Colors

HunterLab(51.1023, 65.5436,
17.0754)

Have a look what the booklet for
HunterLab(51.1023, 65.5436,
17.0754) contains.

HunterLab(51.0970, 65.5341, 17.1255)	3
<i>Conversions</i>	4
<i>Details</i>	6
<i>Harmonies</i>	12
<i>Previews</i>	24
<i>Color Blindness Simulation</i>	28
<i>CSS Examples</i>	31

Color

**HunterLab(51.0970, 65.5341,
17.1255)**

Conversions

Conversions Part 1

Format	Color
Hex	FA4969
RGB	250, 73, 105
RGB Percent	98%, 29%, 41%
CMY	0.0196, 0.7137, 0.5882
CMYK	0.00, 0.71, 0.58, 0.02
HSL	349°, 95%, 63%
HSV	349°, 71%, 98%
XYZ	44.3567, 26.1090, 16.0663
YIQ	129.5710, 95.2200, 47.4760

Conversions

Conversions Part 2

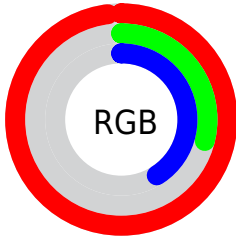
Format	Color
R_{YB}	250, 73, 105
Decimal	16402793
CIE Lab	58.14, 68.26, 22.14
CIE LCh	58, 71.759, 17.974
Yxy	26.1105, 0.5126, 0.3017
Android (android.graphics.Color)	4294592873 (0xFFFA4969)
YUV	129.5710, -12.1135, 105.6162
Hunter-Lab	51.0970, 65.5341, 17.1255

Details

The HunterLab color **51.0970, 65.5341, 17.1255** is a dark color, and the websafe version is hex **FF3366**. The color can be described as middle washed rose. A complement of this color would be **86.5161, -49.0884, 6.9901**, and the grayscale version is **47.1003, -2.5132, 2.5590**.

A 20% lighter version of the original color is **63.5888, 44.8736, 10.6425**, and **32.9701, 57.3889, 14.1222** is the 20% darker color. If you saturate the color by 10%, you get **48.0490, 72.3224, 20.3919**, and if you desaturate by 10%, it is **55.2762, 56.7380, 14.0697**.

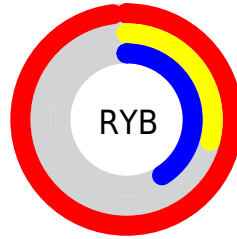
Distribution



Red (98%)

Green (29%)

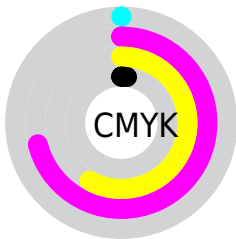
Blue (41%)



Red (98%)

Yellow (29%)

Blue (41%)

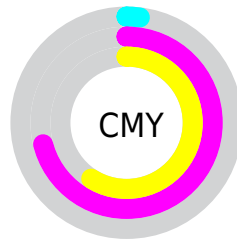


Cyan (0%)

Magenta (71%)

Yellow (58%)

Black (2%)



Cyan (2%)

Magenta (71%)

Yellow (59%)

Brightness & Saturation Gradients

These gradients show how the HunterLab color 51.0970, 65.5341, 17.1255 changes by changing the brightness by 10 percent. The first figure shows a shift by +10% for each color and the second figure -10%.

Similar to the brightness gradients but the following saturation gradients show a change of the HunterLab color 51.0970, 65.5341, 17.1255 by changing the saturation by 10% instead.

■ 51.0970, 65.5341,
17.1255

■ 51.0970, 65.5341,
17.1255

168.3224, 81.8926,
32.7264

■ 41.1173, 63.2770,
15.2038

■ 73.1117, 69.8092,
20.7818

■ 31.8869, 61.0039,
13.1851

■ 85.0650, 71.8102,
22.5455

■ 23.4741, 58.8234,
11.0301

■ 97.6068, 73.7149,
24.2803

■ 15.9677, 57.0297,
8.8061

■ 110.7109, 75.5253,
25.9937

■ 9.4944, 56.5291,
6.6461

■ 124.3539, 77.2445,
27.6910

0.0000, INF, NaN

0.0000, INF, NaN

138.5154, 78.8761,

29.3766

0.0000, NaN, NaN

153.1771, 80.4242,
31.0542

0.0000, NaN, NaN

■ 51.0970, 65.5341,
17.1255

■ 51.0970, 65.5341,
17.1255

■ 48.0490, 72.3224,
20.3919

■ 55.2762, 56.7380,
14.0697

■ 46.1604, 76.4393,
23.5447


■ 60.4707, 46.7693,
11.4319

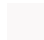
■ 45.2933, 77.9875,
26.0006


■ 66.5410, 36.2976,
9.3015

■ 73.3487, 25.7628,
7.6789

■ 80.7729, 15.4034,
6.5181

 88.7136, 5.3230,
5.7571

 97.0909, -4.4526,
5.3332

 99.5309, -6.9715,
4.8511

Harmonies

Analogous

The Analogous color harmony consists of three colors that are next to each other on the color wheel.



51.0985, 67.8510, -10.1997



51.0970, 65.5341, 17.1255



51.0985, 42.5386, 29.2325

Triad

The Triadic color harmony groups three colors that are evenly spaced from another and form a triangle on the color wheel.



51.0985, 65.5293, 17.1266



51.0985, -39.2772, 27.7466



51.0985, -14.3363, -86.8450

Complementary

The Complementary color scheme is a pair of colors which are on the opposite of each other on the color wheel.



51.0970, 65.5341, 17.1255



86.5161, -49.0884, 6.9901

Split Complementary

Split-complementary colors differ from the complementary color scheme. The scheme consists of three colors, the original color and two neighbors of the complement color.



51.0985, -36.2429, -58.0875



51.0970, 65.5341, 17.1255



51.0985, -48.2213, 13.0550

Square

The Square scheme is like the rectangle color scheme, but the four colors are evenly spaced on the color wheel.



51.0985, 65.5293, 17.1266



51.0985, -19.5309, 32.4300



51.0985, -47.2586, -17.5033



51.0985, 16.5700, -83.2992

Rectangle

The Rectangle color scheme consists of four colors that form a rectangle on the color wheel.



51.0970, 65.5341, 17.1255



51.0985, 21.0678, 32.1297



51.0985, -47.2586, -17.5033



51.0985, -22.8377, -80.1665

Sweetspot

The Sweet Spot groups the original color and five complimentary colors.



51.0985, 65.5293, 17.1266



82.4336, 15.9916, 6.6887



51.4832, 77.7775, -71.0712



37.1418, 8.7422, 3.2273

0.0000, NaN, NaN



46.2646, -2.4686, 2.5136

Same Dimension

The Same Dimension uses a secret algorithm to generate beautiful new colors.



51.0985, 65.5293, 17.1266



48.1706, 76.1371, 22.2764



60.4326, 37.4537, 31.7077



41.5649, 1.8681, 2.6316



33.0100, 56.8823, 18.6039



10.1132, 17.5594, 4.6720

Inverse Universe

The Inverse Universe completely reimagines the original color for something new.



51.0985, 65.5293, 17.1266



48.1706, 76.1371, 22.2764



68.4704, -17.4078, -36.4294



41.5649, 1.8681, 2.6316



33.0100, 56.8823, 18.6039



10.1132, 17.5594, 4.6720

Previews

White Background



This preview shows how the HunterLab color 51.0970, 65.5341, 17.1255 looks on a white background.

Color Contrast Check

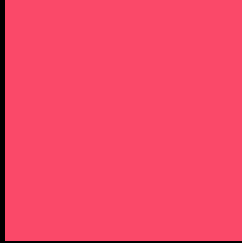
Large Text (above 18pt) WCAG AA ✓ Pass

Any Text WCAG AA × Fail

Large Text (above 18pt) WCAG AAA × Fail

Any Text WCAG AAA × Fail

Black Background



This preview shows how the HunterLab color 51.0970, 65.5341, 17.1255 looks on a black background.

Color Contrast Check

Large Text (above 18pt) WCAG AA ✓ Pass

Any Text WCAG AA ✓ Pass

Large Text (above 18pt) WCAG AAA ✓ Pass

Any Text WCAG AAA × Fail

If you want to check with other color combinations, try the [Color Contrast Checker](#).

HunterLab 51.0970, 65.5341, 17.1255 Background



This preview shows how black text looks on a background with the HunterLab color 51.0970, 65.5341, 17.1255.



This preview shows how white text looks on a background with the HunterLab color 51.0970, 65.5341,

Color Blindness Simulation

Color vision deficiency is a very complex topic, and I could not describe the different causes any better than Wikipedia does, so if you want to learn more, you should check out their [article about color blindness](#).

Dichromacy



Original Color

51.0970, 65.5341, 17.1255

Protanopia

51.0710, -1.9810, 4.3939

Deuteranopia

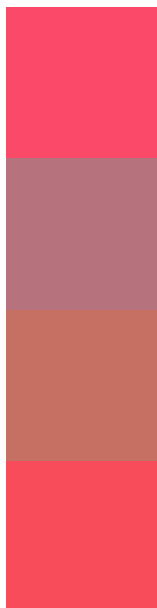
51.0982, 3.4043, 18.7056



Tritanopia

51.1837, 61.4845, 23.3686

Trichromacy



Original Color

51.0970, 65.5341, 17.1255

Protanomaly

48.6695, 21.6426, 6.7329

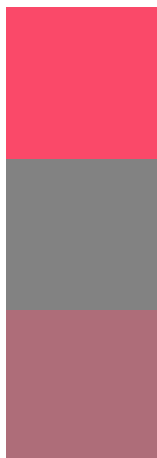
Deuteranomaly

49.3554, 26.0050, 16.6873

Tritanomaly

51.0361, 62.8182, 21.3107

Monochromacy



Original Color

51.0970, 65.5341, 17.1255

Achromatopsia

47.2470, -2.5210, 2.5670

Achromatomaly

46.1697, 21.1748, 5.5906

CSS Examples

Text

The CSS property to change the color of the text to HunterLab 51.0970, 65.5341, 17.1255 is called "color". The color property can be set on classes, ids or directly on the HTML element.

This example shows how text in the color `rgb(250, 73, 105)` looks like.

```
.text, #text, p{  
    color:rgb(250, 73, 105)  
}
```

If you want to add a text shadow in that color use the text-shadow property, you can generate a text shadow directly with our [CSS Text Shadow Generator](#).

Here you see how black text with a 4 pixel rgb(250, 73, 105) colored shadow looks like.

```
.shadow{ text-shadow: 4px 4px 2px rgb(250, 73, 105) }
```

Border

The CSS property to change the border of an element to HunterLab 51.0970, 65.5341, 17.1255 is called "border". The border property can be set on classes, ids or directly on the HTML element.

This example shows the color as border, it can be applied via the CSS property "border" or "border-color".

```
.border, #border, table{ border:4px solid rgb(250, 73, 105) }
```


If only the border color should be changed use the property `border-color`.

```
.border{ border-color:rgb(250, 73, 105) }
```

If you want to add a box shadow in that color use:

Here you see how a box with a 4 pixel `rgb(250, 73, 105)` colored shadow looks like.

```
.boxshadow{ -moz-box-shadow:4px 4px 4px  
4px rgb(250, 73, 105); -webkit-box-  
shadow:4px 4px 4px 4px rgb(250, 73, 105);  
box-shadow:4px 4px 4px 4px rgb(250, 73,  
105) }
```

Background

The CSS property to change the background color of an element to HunterLab 51.0970, 65.5341, 17.1255 is called "background". The background property can be set on classes, ids or directly on the HTML element.

```
.background, #background, body{  
background: rgb(250, 73, 105) }
```

If only the background color should be changed can be used:

```
.background{ background-color: rgb(250, 73,  
105) }
```

This example shows the color as background, it is applied via the CSS property "background".

To optimize and compress your CSS code, you can use our [online CSS compressor and optimizer](#) based on csstidy. If you want to create a linear or radial gradient as background or border, check our [CSS Gradient Generator](#).

Hey! You found this booklet interesting? Support Converting Colors with the new Membership Option!

The pro membership hides all ads, plus gives you double the colors in the color bucket, and more awesome pro features!

[Learn more, Memberships starting at \\$2.50/m!](#)

**Follow me
on Twitter!**

@ConvertingColor