

Converting Colors

HunterLab(51.1349, 11.8369,
19.5010)

Have a look what the booklet for
HunterLab(51.1349, 11.8369,
19.5010) contains.

HunterLab(51.1777, 11.6945, 19.4719)	3
<i>Conversions</i>	4
<i>Details</i>	6
<i>Harmonies</i>	12
<i>Previews</i>	24
<i>Color Blindness Simulation</i>	28
<i>CSS Examples</i>	31

Color

**HunterLab(51.1777, 11.6945,
19.4719)**

Conversions

Conversions Part 1

Format	Color
Hex	B6805E
RGB	182, 128, 94
RGB Percent	71%, 50%, 37%
CMY	0.2863, 0.4980, 0.6314
CMYK	0.00, 0.30, 0.48, 0.29
HSL	23°, 38%, 54%
HSV	23°, 48%, 71%
XYZ	29.0309, 26.1916, 14.1151
YIQ	140.2700, 43.0980, 0.8740

Conversions

Conversions Part 2

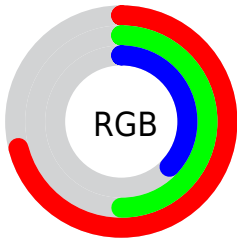
Format	Color
RYB	182, 149, 94
Decimal	11960414
CIELab	58.22, 16.82, 26.74
CIELCh	58, 31.591, 57.837
Yxy	26.1928, 0.4187, 0.3777
Android (android.graphics.Color)	4290150494 (0xFFB6805E)
YUV	140.2700, -22.8111, 36.5972
Hunter-Lab	51.1777, 11.6945, 19.4719

Details

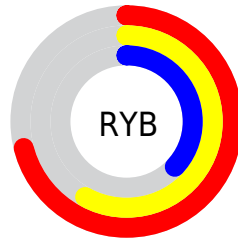
The HunterLab color **51.1777, 11.6945, 19.4719** is a dark color, and the websafe version is hex **CC9966**. A complement of this color would be **51.8996, -9.4877, -18.7435**, and the grayscale version is **51.3952, -2.7423, 2.7924**.

A 20% lighter version of the original color is **73.2239, 12.1981, 23.6432**, and **31.9888, 10.4966, 14.9105** is the 20% darker color. If you saturate the color by 10%, you get **48.1133, 15.7169, 21.5410**, and if you desaturate by 10%, it is **54.4376, 7.9722, 16.9241**.

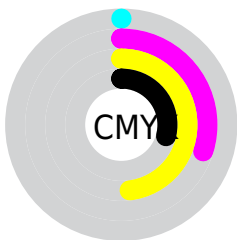
Distribution



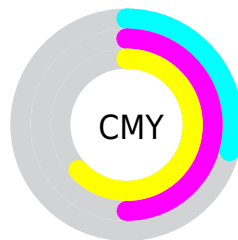
- Red (71%)
- Green (50%)
- Blue (37%)



- Red (71%)
- Yellow (58%)
- Blue (37%)



- Cyan (0%)
- Magenta (30%)
- Yellow (48%)
- Black (29%)



- Cyan (29%)
- Magenta (50%)
- Yellow (63%)

Brightness & Saturation Gradients

These gradients show how the HunterLab color 51.1777, 11.6945, 19.4719 changes by changing the brightness by 10 percent. The first figure shows a shift by +10% for each color and the second figure -10%.

Similar to the brightness gradients but the following saturation gradients show a change of the HunterLab color 51.1777, 11.6945, 19.4719 by changing the saturation by 10% instead.

■ 51.1777, 11.6945,
19.4719

■ 51.1777, 11.6945,
19.4719

168.4421, 11.8595,
37.1622

■ 41.1922, 11.3267,
17.2313

■ 73.2024, 12.1661,
23.6921

■ 31.9557, 10.8593,
14.8622

■ 85.1603, 12.2928,
25.7097

■ 23.5362, 10.2723,
12.3173

■ 97.7067, 12.3552,
27.6836

■ 16.0224, 9.5425,
10.0073

■ 110.8150, 12.3584,
29.6231

■ 9.5404, 8.6404,
6.6783

124.4621, 12.3070,
31.5355

0.0000, INF, NaN

0.0000, NaN, NaN

138.6276, 12.2047,

33.4266

0.0000, NaN, NaN

153.2931, 12.0546,
35.3009

0.0000, NaN, NaN

■ 51.1777, 11.6945,
19.4719

■ 51.1777, 11.6945,
19.4719

■ 48.1133, 15.7169,
21.5410

■ 54.4376, 7.9722,
16.9241

■ 45.2623, 20.0340,
23.0669

■ 57.8695, 4.5530,
13.9561

■ 42.6490, 24.6059,
23.9937

■ 61.4569, 1.4205,
10.6238

■ 40.2964, 29.3600,
24.2861

■ 65.1844, -1.4451,
6.9753

■ 38.2206, 34.1597,
24.0157

■ 69.0384, -4.0656,
3.0515

■ 37.9030, 34.9311,
23.9672

■ 73.0072, -6.4634,
-1.1128

■ 77.0807, -8.6600,
-5.4886

■ 81.2499, -10.6756,
-10.0516

■ 85.4009, -13.1213,
-13.2879

Harmonies

Analogous

The Analogous color harmony consists of three colors that are next to each other on the color wheel.



51.1790, 22.0568, 12.9453



51.1777, 11.6945, 19.4719



51.1790, -1.7588, 21.7016

Triad

The Triadic color harmony groups three colors that are evenly spaced from another and form a triangle on the color wheel.



51.1790, 11.6921, 19.4726



51.1790, -25.9850, 3.7010



51.1790, 9.8401, -23.9194

Complementary

The Complementary color scheme is a pair of colors which are on the opposite of each other on the color wheel.



51.1777, 11.6945, 19.4719



51.8996, -9.4877, -18.7435

Split Complementary

Split-complementary colors differ from the complementary color scheme. The scheme consists of three colors, the original color and two neighbors of the complement color.



51.1790, -3.7010, -28.1943



51.1777, 11.6945, 19.4719



51.1790, -23.5513, -10.0079

Square

The Square scheme is like the rectangle color scheme, but the four colors are evenly spaced on the color wheel.



51.1790, 11.6921, 19.4726



51.1790, -22.7392, 14.1749



51.1790, -15.7195, -22.5588



51.1790, 20.9127, -12.0270

Rectangle

The Rectangle color scheme consists of four colors that form a rectangle on the color wheel.



51.1777, 11.6945, 19.4719



51.1790, -10.3766, 21.0338



51.1790, -15.7195, -22.5588



51.1790, 5.3861, -26.4103

Sweetspot

The Sweet Spot groups the original color and five complimentary colors.



51.1790, 11.6921, 19.4726



84.2854, 0.6806, 12.8260



44.8300, 35.6658, -8.9522



39.1207, 0.7111, 6.5016



96.5975, -5.1542, 5.2483



43.2801, -2.3093, 2.3515

Same Dimension

The Same Dimension uses a secret algorithm to generate beautiful new colors.



51.1790, 11.6921, 19.4726



64.5325, 21.5177, 29.1565



63.3694, -9.4528, 28.9742



30.9290, -0.5593, 3.5078



32.0406, 28.8588, 20.2485



6.9516, 3.1922, 4.3394

Inverse Universe

The Inverse Universe completely reimagines the original color for something new.



51.8996, -9.4877, -18.7435



65.6437, -12.4699, -32.2385



39.6381, 11.8585, -41.5647



31.0032, -2.6262, -0.2177



32.6338, -1.8917, -36.7057



7.0111, -1.7307, -5.0271

Previews

White Background



This preview shows how the HunterLab color 51.1777, 11.6945, 19.4719 looks on a white background.

Color Contrast Check

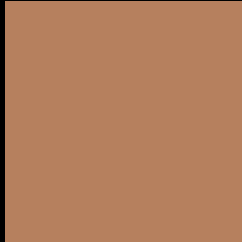
Large Text (above 18pt) WCAG AA ✓ Pass

Any Text WCAG AA × Fail

Large Text (above 18pt) WCAG AAA × Fail

Any Text WCAG AAA × Fail

Black Background



This preview shows how the HunterLab color 51.1777, 11.6945, 19.4719 looks on a black background.

Color Contrast Check

Large Text (above 18pt) WCAG AA ✓ Pass

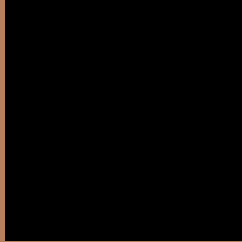
Any Text WCAG AA ✓ Pass

Large Text (above 18pt) WCAG AAA ✓ Pass

Any Text WCAG AAA × Fail

If you want to check with other color combinations, try the [Color Contrast Checker](#).

HunterLab 51.1777, 11.6945, 19.4719 Background



This preview shows how black text looks on a background with the HunterLab color 51.1777, 11.6945, 19.4719.



This preview shows how white text looks on a background with the HunterLab color 51.1777, 11.6945, 19.4719.

Color Blindness Simulation

Color vision deficiency is a very complex topic, and I could not describe the different causes any better than Wikipedia does, so if you want to learn more, you should check out their [article about color blindness](#).

Dichromacy



Original Color

51.1777, 11.6945, 19.4719

Protanopia

51.2214, -4.6320, 17.8175

Deuteranopia

51.1521, 3.4793, 19.5771



Tritanopia

51.1333, 19.6254, 6.5396

Trichromacy



Original Color

51.1777, 11.6945, 19.4719

Protanomaly

51.1398, 0.7754, 18.4140

Deuteranomaly

51.1635, 6.2688, 19.6357

Tritanomaly

51.1523, 16.4647, 11.9418

Monochromacy



Original Color

51.1777, 11.6945, 19.4719

Achromatopsia

51.2104, -2.7325, 2.7824

Achromatomaly

50.9970, 1.3997, 9.6625

CSS Examples

Text

The CSS property to change the color of the text to HunterLab 51.1777, 11.6945, 19.4719 is called "color". The color property can be set on classes, ids or directly on the HTML element.

This example shows how text in the color `rgb(182, 128, 94)` looks like.

```
.text, #text, p{  
    color:rgb(182, 128, 94)  
}
```

If you want to add a text shadow in that color use the text-shadow property, you can generate a text shadow directly with our [CSS Text Shadow Generator](#).

Here you see how black text with a 4 pixel rgb(182, 128, 94) colored shadow looks like.

```
.shadow{ text-shadow: 4px 4px 2px rgb(182, 128, 94) }
```

Border

The CSS property to change the border of an element to HunterLab 51.1777, 11.6945, 19.4719 is called "border". The border property can be set on classes, ids or directly on the HTML element.

This example shows the color as border, it can be applied via the CSS property "border" or "border-color".

```
.border, #border, table{ border:4px solid rgb(182, 128, 94) }
```


If only the border color should be changed use the property `border-color`.

```
.border{ border-color:rgb(182, 128, 94) }
```

If you want to add a box shadow in that color use:

Here you see how a box with a 4 pixel `rgb(182, 128, 94)` colored shadow looks like.

```
.boxshadow{ -moz-box-shadow:4px 4px 4px  
4px rgb(182, 128, 94); -webkit-box-  
shadow:4px 4px 4px 4px rgb(182, 128, 94);  
box-shadow:4px 4px 4px 4px rgb(182, 128,  
94) }
```

Background

The CSS property to change the background color of an element to HunterLab 51.1777, 11.6945, 19.4719 is called "background". The background property can be set on classes, ids or directly on the HTML element.

```
.background, #background, body{  
background: rgb(182, 128, 94) }
```

If only the background color should be changed can be used:

```
.background{ background-color: rgb(182,  
128, 94) }
```

This example shows the color as background, it is applied via the CSS property "background".

To optimize and compress your CSS code, you can use our [online CSS compressor and optimizer](#) based on csstidy. If you want to create a linear or radial gradient as background or border, check our [CSS Gradient Generator](#).

Hey! You found this booklet interesting? Support Converting Colors with the new Membership Option!

The pro membership hides all ads, plus gives you double the colors in the color bucket, and more awesome pro features!

[Learn more, Memberships starting at \\$2.50/m!](#)

**Follow me
on Twitter!**

@ConvertingColor