

Converting Colors

HunterLab(51.1416, 9.2268,
17.1016)

Have a look what the booklet for
HunterLab(51.1416, 9.2268,
17.1016) contains.

HunterLab(51.1416, 9.2268, 17.1016)	3
<i>Conversions</i>	4
<i>Details</i>	6
<i>Harmonies</i>	12
<i>Previews</i>	24
<i>Color Blindness Simulation</i>	28
<i>CSS Examples</i>	31

Color

**HunterLab(51.1416, 9.2268,
17.1016)**

Conversions

Conversions Part 1

Format	Color
Hex	B08266
RGB	176, 130, 102
RGB Percent	69%, 51%, 40%
CMY	0.3098, 0.4902, 0.6000
CMYK	0.00, 0.26, 0.42, 0.31
HSL	23°, 32%, 55%
HSV	23°, 42%, 69%
XYZ	28.2853, 26.1546, 16.1279
YIQ	140.5620, 36.4040, 1.0440

Conversions

Conversions Part 2

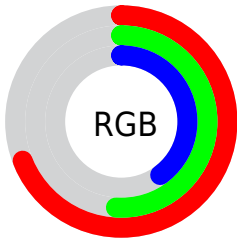
Format	Color
R_{YB}	176, 147, 102
Decimal	11567718
CIE _{Lab}	58.18, 14.06, 22.08
CIE _{LCh}	58, 26.179, 57.516
Yxy	26.1559, 0.4008, 0.3706
Android (android.graphics.Color)	4289757798 (0xFFB08266)
YUV	140.5620, -19.0111, 31.0791
Hunter-Lab	51.1416, 9.2268, 17.1016

Details

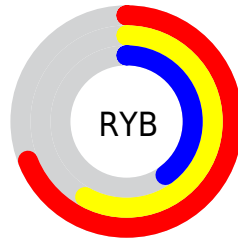
The HunterLab color $51.1416, 9.2268, 17.1016$ is a dark color, and the websafe version is hex $CC9966$. A complement of this color would be $52.0942, -9.2534, -14.8096$, and the grayscale version is $51.4989, -2.7479, 2.7980$.

A 20% lighter version of the original color is $73.1372, 9.3862, 20.8000$, and $31.9776, 8.3286, 13.1487$ is the 20% darker color. If you saturate the color by 10%, you get $48.0475, 12.9732, 19.3818$, and if you desaturate by 10%, it is $54.4148, 5.7665, 14.4079$.

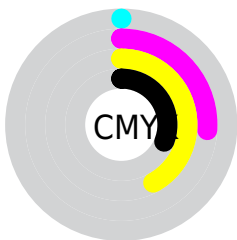
Distribution



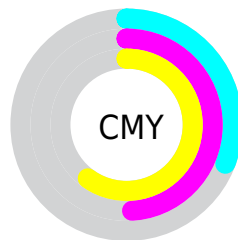
- Red (69%)
- Green (51%)
- Blue (40%)



- Red (69%)
- Yellow (58%)
- Blue (40%)



- Cyan (0%)
- Magenta (26%)
- Yellow (42%)
- Black (31%)



- Cyan (31%)
- Magenta (49%)
- Yellow (60%)

Brightness & Saturation Gradients

These gradients show how the HunterLab color 51.1416, 9.2268, 17.1016 changes by changing the brightness by 10 percent. The first figure shows a shift by +10% for each color and the second figure -10%.

Similar to the brightness gradients but the following saturation gradients show a change of the HunterLab color 51.1416, 9.2268, 17.1016 by changing the saturation by 10% instead.

■ 51.1416, 9.2268,
17.1016

■ 51.1416, 9.2268,
17.1016

168.3884, 8.3740,
32.6737

■ 41.1586, 8.9981,
15.1841

■ 73.1617, 9.4406,
20.7497

■ 31.9248, 8.6773,
13.1704

■ 85.1175, 9.4467,
22.5099

■ 23.5083, 8.2457,
11.0213

■ 97.6619, 9.3931,
24.2415

■ 15.9978, 7.6800,
8.7966

■ 110.7682, 9.2847,
25.9517

■ 9.5197, 6.9476,
6.6638

124.4135, 9.1254,
27.6462

0.0000, INF, NaN

0.0000, NaN, NaN

138.5772, 8.9187,

29.3291

0.0000, NaN, NaN

153.2410, 8.6674,
31.0040

0.0000, NaN, NaN

■ 51.1416, 9.2268,
17.1016

■ 51.1416, 9.2268,
17.1016

■ 48.0475, 12.9732,
19.3818

■ 54.4148, 5.7665,
14.4079

■ 45.1492, 17.0104,
21.1862

■ 57.8453, 2.5889,
11.3537

■ 42.4704, 21.3144,
22.4556

■ 61.4179, -0.3256,
7.9884

■ 40.0340, 25.8352,
23.1391

■ 65.1188, -2.9973,
4.3532

■ 37.8625, 30.4839,
23.2137

■ 68.9357, -5.4480,
0.4833

■ 36.3283, 34.1462,
22.9831

■ 72.8581, -7.6987,
-3.5922

■ 76.8768, -9.7695,
-7.8490

■ 80.9839, -11.6787,
-12.2666

■ 84.9651, -14.6019,
-13.9193

Harmonies

Analogous

The Analogous color harmony consists of three colors that are next to each other on the color wheel.



51.1428, 17.5747, 11.2922



51.1416, 9.2268, 17.1016



51.1428, -1.8047, 19.1784

Triad

The Triadic color harmony groups three colors that are evenly spaced from another and form a triangle on the color wheel.



51.1428, 9.2246, 17.1023



51.1428, -22.3290, 3.6547



51.1428, 7.4914, -18.6571

Complementary

The Complementary color scheme is a pair of colors which are on the opposite of each other on the color wheel.



51.1416, 9.2268, 17.1016



52.0942, -9.2534, -14.8096

Split Complementary

Split-complementary colors differ from the complementary color scheme. The scheme consists of three colors, the original color and two neighbors of the complement color.



51.1428, -3.6519, -21.8940



51.1416, 9.2268, 17.1016



51.1428, -20.2931, -7.4958

Square

The Square scheme is like the rectangle color scheme, but the four colors are evenly spaced on the color wheel.



51.1428, 9.2246, 17.1023



51.1428, -19.4957, 12.5187



51.1428, -13.6813, -17.4398



51.1428, 16.5156, -9.3447

Rectangle

The Rectangle color scheme consists of four colors that form a rectangle on the color wheel.



51.1416, 9.2268, 17.1016



51.1428, -8.9890, 18.5888



51.1428, -13.6813, -17.4398



51.1428, 3.8420, -20.5682

Sweetspot

The Sweet Spot groups the original color and five complimentary colors.



51.1428, 9.2246, 17.1023



82.1348, 0.0082, 11.3141



45.7151, 29.6017, -8.1172



37.7459, 0.3902, 5.7348



94.3401, -5.0338, 5.1257



41.3092, -2.2042, 2.2444

Same Dimension

The Same Dimension uses a secret algorithm to generate beautiful new colors.



51.1428, 9.2246, 17.1023



65.1813, 16.8607, 25.7744



61.2457, -8.1944, 25.4266



30.0247, -0.5166, 3.3805



31.2864, 28.8033, 19.7828



6.5005, 2.8502, 4.0555

Inverse Universe

The Inverse Universe completely reimagines the original color for something new.



52.0942, -9.2534, -14.8096



66.6801, -12.7576, -25.3744



41.8551, 8.1907, -32.2494



30.1336, -2.5782, -0.1813



32.4073, -2.4533, -35.2102



6.6221, -1.7772, -4.4406

Previews

White Background



This preview shows how the HunterLab color 51.1416, 9.2268, 17.1016 looks on a white background.

Color Contrast Check

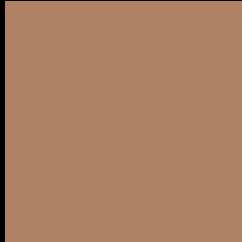
Large Text (above 18pt) WCAG AA ✓ Pass

Any Text WCAG AA × Fail

Large Text (above 18pt) WCAG AAA × Fail

Any Text WCAG AAA × Fail

Black Background



This preview shows how the HunterLab color 51.1416, 9.2268, 17.1016 looks on a black background.

Color Contrast Check

Large Text (above 18pt) WCAG AA ✓ Pass

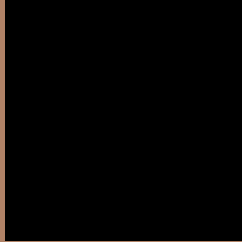
Any Text WCAG AA ✓ Pass

Large Text (above 18pt) WCAG AAA ✓ Pass

Any Text WCAG AAA × Fail

If you want to check with other color combinations, try the [Color Contrast Checker](#).

HunterLab 51.1416, 9.2268, 17.1016 Background



This preview shows how black text looks on a background with the HunterLab color 51.1416, 9.2268, 17.1016.



This preview shows how white text looks on a background with the HunterLab color 51.1416, 9.2268,

Color Blindness Simulation

Color vision deficiency is a very complex topic, and I could not describe the different causes any better than Wikipedia does, so if you want to learn more, you should check out their [article about color blindness](#).

Dichromacy



Original Color

51.1416, 9.2268, 17.1016

Protanopia

51.2648, -4.2069, 15.7452

Deuteranopia

51.0850, 3.5462, 17.2510



Tritanopia

51.2393, 16.3193, 5.3360

Trichromacy



Original Color

51.1416, 9.2268, 17.1016

Protanomaly

50.9894, 0.5694, 15.8891

Deuteranomaly

51.2452, 5.4627, 17.4280

Tritanomaly

51.0625, 13.8503, 9.9487

Monochromacy



Original Color

51.1416, 9.2268, 17.1016

Achromatopsia

51.6097, -2.7538, 2.8041

Achromatomaly

51.2773, 1.1305, 8.4005

CSS Examples

Text

The CSS property to change the color of the text to HunterLab 51.1416, 9.2268, 17.1016 is called "color". The color property can be set on classes, ids or directly on the HTML element.

This example shows how text in the color `rgb(176, 130, 102)` looks like.

```
.text, #text, p{  
    color:rgb(176, 130, 102)  
}
```

If you want to add a text shadow in that color use the text-shadow property, you can generate a text shadow directly with our [CSS Text Shadow Generator](#).

Here you see how black text with a 4 pixel rgb(176, 130, 102) colored shadow looks like.

```
.shadow{ text-shadow: 4px 4px 2px rgb(176, 130, 102) }
```

Border

The CSS property to change the border of an element to HunterLab 51.1416, 9.2268, 17.1016 is called "border". The border property can be set on classes, ids or directly on the HTML element.

This example shows the color as border, it can be applied via the CSS property "border" or "border-color".

```
.border, #border, table{ border:4px solid rgb(176, 130, 102) }
```


If only the border color should be changed use the property `border-color`.

```
.border{ border-color:rgb(176, 130, 102) }
```

If you want to add a box shadow in that color use:

Here you see how a box with a 4 pixel `rgb(176, 130, 102)` colored shadow looks like.

```
.boxshadow{ -moz-box-shadow:4px 4px 4px  
4px rgb(176, 130, 102); -webkit-box-  
shadow:4px 4px 4px 4px rgb(176, 130, 102);  
box-shadow:4px 4px 4px 4px rgb(176, 130,  
102) }
```

Background

The CSS property to change the background color of an element to HunterLab 51.1416, 9.2268, 17.1016 is called "background". The background property can be set on classes, ids or directly on the HTML element.

```
.background, #background, body{  
background: rgb(176, 130, 102) }
```

If only the background color should be changed can be used:

```
.background{ background-color: rgb(176,  
130, 102) }
```

This example shows the color as background, it is applied via the CSS property "background".

To optimize and compress your CSS code, you can use our [online CSS compressor and optimizer](#) based on csstidy. If you want to create a linear or radial gradient as background or border, check our [CSS Gradient Generator](#).

Hey! You found this booklet interesting? Support Converting Colors with the new Membership Option!

The pro membership hides all ads, plus gives you double the colors in the color bucket, and more awesome pro features!

[Learn more, Memberships starting at \\$2.50/m!](#)

**Follow me
on Twitter!**

@ConvertingColor