

Converting Colors

HunterLab(51.2049, 7.2356,
23.7618)

Have a look what the booklet for
HunterLab(51.2049, 7.2356,
23.7618) contains.

HunterLab(51.2049, 7.2356, 23.7618)	3
<i>Conversions</i>	4
<i>Details</i>	6
<i>Harmonies</i>	12
<i>Previews</i>	24
<i>Color Blindness Simulation</i>	28
<i>CSS Examples</i>	31

Color

**HunterLab(51.2049, 7.2356,
23.7618)**

Conversions

Conversions Part 1

Format	Color
Hex	B2834C
RGB	178, 131, 76
RGB Percent	70%, 51%, 30%
CMY	0.3020, 0.4863, 0.7020
CMYK	0.00, 0.26, 0.57, 0.30
HSL	32°, 40%, 50%
HSV	32°, 57%, 70%
XYZ	27.7809, 26.2194, 10.4341
YIQ	138.7830, 45.6670, -7.1410

Conversions

Conversions Part 2

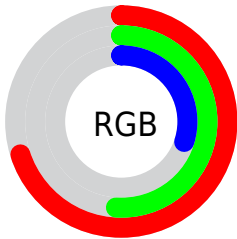
Format	Color
R_{YB}	163, 178, 76
Decimal	11699020
CIE _{Lab}	58.25, 11.80, 36.49
CIE _{LCh}	58, 38.347, 72.079
Yxy	26.2207, 0.4311, 0.4069
Android (android.graphics.Color)	4289889100 (0xFFB2834C)
YUV	138.7830, -30.9520, 34.3933
Hunter-Lab	51.2049, 7.2356, 23.7618

Details

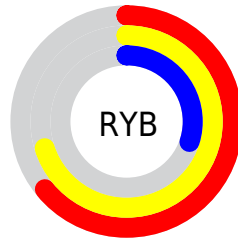
The HunterLab color $51.2049, 7.2356, 23.7618$ is a dark color, and the websafe version is hex $CC9966$. A complement of this color would be $43.4924, -1.8306, -30.6504$, and the grayscale version is $50.8328, -2.7123, 2.7618$.

A 20% lighter version of the original color is $73.2258, 7.1415, 29.2643$, and $32.0326, 6.7172, 17.7044$ is the 20% darker color. If you saturate the color by 10%, you get $48.8772, 10.1022, 25.4063$, and if you desaturate by 10%, it is $53.6605, 4.6706, 21.4980$.

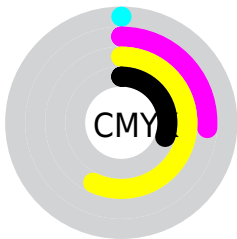
Distribution



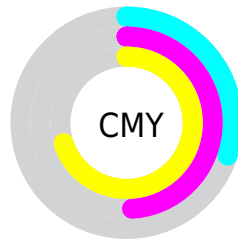
- Red (70%)
- Green (51%)
- Blue (30%)



- Red (64%)
- Yellow (70%)
- Blue (30%)



- Cyan (0%)
- Magenta (26%)
- Yellow (57%)
- Black (30%)



- Cyan (30%)
- Magenta (49%)
- Yellow (70%)

Brightness & Saturation Gradients

These gradients show how the HunterLab color 51.2049, 7.2356, 23.7618 changes by changing the brightness by 10 percent. The first figure shows a shift by +10% for each color and the second figure -10%.

Similar to the brightness gradients but the following saturation gradients show a change of the HunterLab color 51.2049, 7.2356, 23.7618 by changing the saturation by 10% instead.

■ 51.2049, 7.2356,
23.7618

■ 51.2049, 7.2356,
23.7618

168.4826, 5.5334,
46.0284

■ 41.2175, 7.1238,
20.8275

■ 73.2330, 7.2328,
29.2173

■ 31.9789, 6.9274,
17.7019

■ 85.1926, 7.1380,
31.7917

■ 23.5572, 6.6285,
14.3409

■ 97.7404, 6.9878,
34.2897

■ 16.0408, 6.2052,
11.2286

■ 110.8502, 6.7863,
36.7251

■ 9.5559, 5.6244,
6.6891

■ 124.4987, 6.5373,
39.1087

0.0000, INF, NaN

0.0000, NaN, NaN

138.6655, 6.2438,

41.4493

0.0000, NaN, NaN

153.3323, 5.9084,
43.7540

0.0000, NaN, NaN

■ 51.2049, 7.2356,
23.7618

■ 51.2049, 7.2356,
23.7618

■ 48.8772, 10.1022,
25.4063

■ 53.6605, 4.6706,
21.4980

■ 46.6818, 13.2715,
26.4020

■ 56.2319, 2.4106,
18.6515

■ 44.6276, 16.7211,
26.7427

■ 58.9121, 0.4431,
15.2659

■ 42.7181, 20.4007,
26.4885

■ 61.6934, -1.2461,
11.3852

■ 42.2238, 21.4033,
26.3928

■ 64.5684, -2.6734,
7.0520

■ 67.5306, -3.8562,
2.3066

■ 70.5737, -4.8119,
-2.8141

■ 73.6923, -5.5576,
-8.2766

■ 76.8812, -6.1095,
-14.0506

Harmonies

Analogous

The Analogous color harmony consists of three colors that are next to each other on the color wheel.



51.2062, 22.5668, 18.9667



51.2049, 7.2356, 23.7618



51.2062, -9.1075, 24.1586

Triad

The Triadic color harmony groups three colors that are evenly spaced from another and form a triangle on the color wheel.



51.2062, 7.2332, 23.7624



51.2062, -29.8345, -3.8271



51.2062, 19.9190, -24.5283

Complementary

The Complementary color scheme is a pair of colors which are on the opposite of each other on the color wheel.



51.2049, 7.2356, 23.7618



43.4924, -1.8306, -30.6504

Split Complementary

Split-complementary colors differ from the complementary color scheme. The scheme consists of three colors, the original color and two neighbors of the complement color.



51.2062, 3.9652, -35.6030



51.2049, 7.2356, 23.7618



51.2062, -23.9138, -21.3855

Square

The Square scheme is like the rectangle color scheme, but the four colors are evenly spaced on the color wheel.



51.2062, 7.2332, 23.7624



51.2062, -29.1901, 11.1118



51.2062, -11.9945, -34.3010



51.2062, 30.4956, -7.2225

Rectangle

The Rectangle color scheme consists of four colors that form a rectangle on the color wheel.



51.2049, 7.2356, 23.7618



51.2062, -18.2874, 22.1105



51.2062, -11.9945, -34.3010



51.2062, 14.9283, -29.3143

Sweetspot

The Sweet Spot groups the original color and five complimentary colors.



51.2062, 7.2332, 23.7624



83.0821, -1.6798, 15.3273



40.0989, 39.1444, -2.6056



38.7525, -0.5925, 7.7244



95.4677, -5.0939, 5.1869



42.2927, -2.2566, 2.2978

Same Dimension

The Same Dimension uses a secret algorithm to generate beautiful new colors.



51.2062, 7.2332, 23.7624



64.9462, 14.7974, 34.6917



64.3663, -16.0941, 33.0820



30.3957, -1.1427, 3.7826



35.8937, 17.7116, 22.4276



7.2146, 1.4041, 4.4702

Inverse Universe

The Inverse Universe completely reimagines the original color for something new.



43.4924, -1.8306, -30.6504



52.6040, 1.1701, -53.6545



31.7222, 22.5793, -58.7802



29.7554, -1.9582, -0.6412



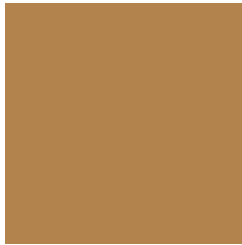
25.9658, 9.3555, -52.6508



5.7381, -0.4182, -6.2693

Previews

White Background



This preview shows how the HunterLab color 51.2049, 7.2356, 23.7618 looks on a white background.

Color Contrast Check

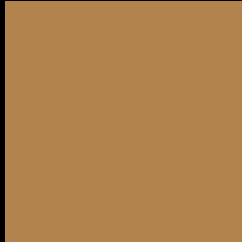
Large Text (above 18pt) WCAG AA ✓ Pass

Any Text WCAG AA × Fail

Large Text (above 18pt) WCAG AAA × Fail

Any Text WCAG AAA × Fail

Black Background



This preview shows how the HunterLab color 51.2049, 7.2356, 23.7618 looks on a black background.

Color Contrast Check

Large Text (above 18pt) WCAG AA ✓ Pass

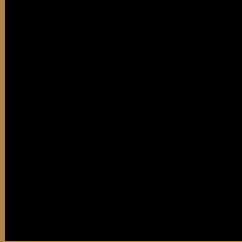
Any Text WCAG AA ✓ Pass

Large Text (above 18pt) WCAG AAA ✓ Pass

Any Text WCAG AAA × Fail

If you want to check with other color combinations, try the [Color Contrast Checker](#).

HunterLab 51.2049, 7.2356, 23.7618 Background



This preview shows how black text looks on a background with the HunterLab color 51.2049, 7.2356, 23.7618.



This preview shows how white text looks on a background with the HunterLab color 51.2049, 7.2356,

23.7618.

Color Blindness Simulation

Color vision deficiency is a very complex topic, and I could not describe the different causes any better than Wikipedia does, so if you want to learn more, you should check out their [article about color blindness](#).

Dichromacy



Original Color

51.2049, 7.2356, 23.7618

Protanopia

51.1769, -5.4459, 22.8698

Deuteranopia

51.3116, 3.4640, 23.9870



Tritanopia

51.1897, 18.6527, 5.7461

Trichromacy



Original Color

51.2049, 7.2356, 23.7618

Protanomaly

51.2132, -1.0058, 23.1953

Deuteranomaly

51.2657, 4.6890, 23.9733

Tritanomaly

51.1808, 13.7585, 13.6802

Monochromacy



Original Color

51.2049, 7.2356, 23.7618

Achromatopsia

50.8117, -2.7112, 2.7607

Achromatomaly

50.6375, -0.1600, 11.8535

CSS Examples

Text

The CSS property to change the color of the text to HunterLab 51.2049, 7.2356, 23.7618 is called "color". The color property can be set on classes, ids or directly on the HTML element.

This example shows how text in the color `rgb(178, 131, 76)` looks like.

```
.text, #text, p{  
    color:rgb(178, 131, 76)  
}
```

If you want to add a text shadow in that color use the text-shadow property, you can generate a text shadow directly with our [CSS Text Shadow Generator](#).

Here you see how black text with a 4 pixel rgb(178, 131, 76) colored shadow looks like.

```
.shadow{ text-shadow: 4px 4px 2px rgb(178, 131, 76) }
```

Border

The CSS property to change the border of an element to HunterLab 51.2049, 7.2356, 23.7618 is called "border". The border property can be set on classes, ids or directly on the HTML element.

This example shows the color as border, it can be applied via the CSS property "border" or "border-color".

```
.border, #border, table{ border:4px solid rgb(178, 131, 76) }
```


If only the border color should be changed use the property `border-color`.

```
.border{ border-color:rgb(178, 131, 76) }
```

If you want to add a box shadow in that color use:

Here you see how a box with a 4 pixel `rgb(178, 131, 76)` colored shadow looks like.

```
.boxshadow{ -moz-box-shadow:4px 4px 4px  
4px rgb(178, 131, 76); -webkit-box-  
shadow:4px 4px 4px 4px rgb(178, 131, 76);  
box-shadow:4px 4px 4px 4px rgb(178, 131,  
76) }
```

Background

The CSS property to change the background color of an element to HunterLab 51.2049, 7.2356, 23.7618 is called "background". The background property can be set on classes, ids or directly on the HTML element.

```
.background, #background, body{  
background: rgb(178, 131, 76) }
```

If only the background color should be changed can be used:

```
.background{ background-color: rgb(178,  
131, 76) }
```

This example shows the color as background, it is applied via the CSS property "background".

To optimize and compress your CSS code, you can use our [online CSS compressor and optimizer](#) based on csstidy. If you want to create a linear or radial gradient as background or border, check our [CSS Gradient Generator](#).

Hey! You found this booklet interesting? Support Converting Colors with the new Membership Option!

The pro membership hides all ads, plus gives you double the colors in the color bucket, and more awesome pro features!

[Learn more, Memberships starting at \\$2.50/m!](#)

**Follow me
on Twitter!**

@ConvertingColor