

Converting Colors

HunterLab(51.2307, 12.4413,
15.0418)

Have a look what the booklet for
HunterLab(51.2307, 12.4413,
15.0418) contains.

HunterLab(51.2306, 12.4413, 15.0418)	3
<i>Conversions</i>	4
<i>Details</i>	6
<i>Harmonies</i>	12
<i>Previews</i>	24
<i>Color Blindness Simulation</i>	28
<i>CSS Examples</i>	31

Color

**HunterLab(51.2306, 12.4413,
15.0418)**

Conversions

Conversions Part 1

Format	Color
Hex	B4806D
RGB	180, 128, 109
RGB Percent	71%, 50%, 43%
CMY	0.2941, 0.4980, 0.5725
CMYK	0.00, 0.29, 0.39, 0.29
HSL	16°, 32%, 57%
HSV	16°, 39%, 71%
XYZ	29.3019, 26.2457, 17.9896
YIQ	141.3820, 37.0910, 5.1150

Conversions

Conversions Part 2

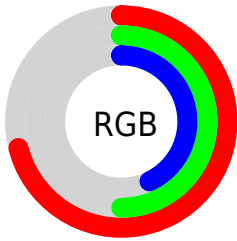
Format	Color
R_{YB}	180, 135, 109
Decimal	11829357
CIE _{Lab}	58.27, 17.64, 18.31
CIE _{LCh}	58, 25.424, 46.062
Yxy	26.2470, 0.3985, 0.3569
Android (android.graphics.Color)	4290019437 (0xFFB4806D)
YUV	141.3820, -15.9643, 33.8680
Hunter-Lab	51.2306, 12.4413, 15.0418

Details

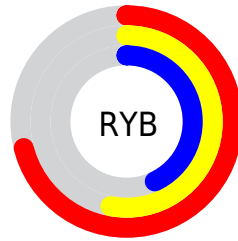
The HunterLab color **51.2306, 12.4413, 15.0418** is a dark color, and the websafe version is hex **996666**. A complement of this color would be **56.5995, -12.9859, -10.5836**, and the grayscale version is **51.8146, -2.7647, 2.8152**.

A 20% lighter version of the original color is **73.2294, 12.9384, 18.0503**, and **32.0763, 11.1777, 11.8004** is the 20% darker color. If you saturate the color by 10%, you get **47.6232, 17.1902, 17.3236**, and if you desaturate by 10%, it is **55.0822, 7.9720, 12.4681**.

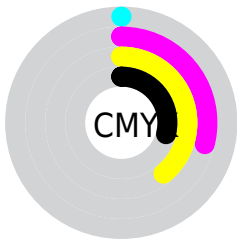
Distribution



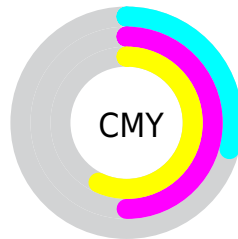
- Red (71%)
- Green (50%)
- Blue (43%)



- Red (71%)
- Yellow (53%)
- Blue (43%)



- Cyan (0%)
- Magenta (29%)
- Yellow (39%)
- Black (29%)



- Cyan (29%)
- Magenta (50%)
- Yellow (57%)
- Black (29%)

Brightness & Saturation Gradients

These gradients show how the HunterLab color 51.2306, 12.4413, 15.0418 changes by changing the brightness by 10 percent. The first figure shows a shift by +10% for each color and the second figure -10%.

Similar to the brightness gradients but the following saturation gradients show a change of the HunterLab color 51.2306, 12.4413, 15.0418 by changing the saturation by 10% instead.

■ 51.2306, 12.4413,
15.0418

■ 51.2306, 12.4413,
15.0418

168.5208, 12.9057,
28.9352

■ 41.2414, 12.0332,
13.3806

■ 73.2620, 12.9885,
18.2368

■ 32.0009, 11.5233,
11.6500

■ 85.2230, 13.1506,
19.7932

■ 23.5770, 10.8916,
9.8184

■ 97.7723, 13.2471,
21.3329

■ 16.0583, 10.1150,
7.8350

■ 110.8834, 13.2832,
22.8615

■ 9.5706, 9.1659,
6.6994

124.5332, 13.2635,
24.3831

0.0000, INF, NaN

0.0000, NaN, NaN

138.7013, 13.1919,

25.9010

0.0000, NaN, NaN

153.3693, 13.0717,
27.4176

0.0000, NaN, NaN

■ 51.2306, 12.4413,
15.0418

■ 51.2306, 12.4413,
15.0418

■ 47.6232, 17.1902,
17.3236

■ 55.0822, 7.9720,
12.4681

■ 44.2906, 22.2031,
19.2421

■ 59.1446, 3.7875,
9.6565

■ 41.2724, 27.4173,
20.7193

■ 63.3936, -0.1302,
6.6527

■ 38.6090, 32.7183,
21.6756

■ 67.8077, -3.8030,
3.4910

■ 36.3398, 37.9243,
22.0511

■ 72.3690, -7.2555,
0.1982

■ 34.4888, 42.7554,
21.9509

■ 77.0622, -10.5118,
-3.2055

■ 34.3975, 43.0029,
21.9484

■ 81.8747, -13.5950,
-6.7044

■ 86.7955, -16.5257,
-10.2863

■ 91.2288, -22.6398,
-5.6675

Harmonies

Analogous

The Analogous color harmony consists of three colors that are next to each other on the color wheel.



51.2318, 18.7208, 7.9451



51.2306, 12.4413, 15.0418



51.2318, 2.3477, 18.4604

Triad

The Triadic color harmony groups three colors that are evenly spaced from another and form a triangle on the color wheel.



51.2318, 12.4390, 15.0426



51.2318, -21.3256, 7.3103



51.2318, 3.1200, -19.9829

Complementary

The Complementary color scheme is a pair of colors which are on the opposite of each other on the color wheel.



51.2306, 12.4413, 15.0418



56.5995, -12.9859, -10.5836

Split Complementary

Split-complementary colors differ from the complementary color scheme. The scheme consists of three colors, the original color and two neighbors of the complement color.



51.2318, -7.6296, -20.2513



51.2306, 12.4413, 15.0418



51.2318, -21.1562, -2.9665

Square

The Square scheme is like the rectangle color scheme, but the four colors are evenly spaced on the color wheel.



51.2318, 12.4390, 15.0426



51.2318, -16.8117, 14.6610



51.2318, -16.3281, -13.5212



51.2318, 13.0445, -12.8497

Rectangle

The Rectangle color scheme consists of four colors that form a rectangle on the color wheel.



51.2306, 12.4413, 15.0418



51.2318, -4.9050, 18.7648



51.2318, -16.3281, -13.5212



51.2318, -0.5310, -20.9223

Sweetspot

The Sweet Spot groups the original color and five complimentary colors.



51.2318, 12.4390, 15.0426



83.7597, 1.2472, 10.0982



48.1834, 29.5215, -11.3214



38.5991, 0.8889, 4.9365



95.4677, -5.0939, 5.1869



42.2927, -2.2566, 2.2978

Same Dimension

The Same Dimension uses a secret algorithm to generate beautiful new colors.



51.2318, 12.4390, 15.0426



64.8999, 22.0731, 22.8544



60.9557, -4.8917, 23.4021



29.7709, -0.0839, 3.1029



28.9048, 35.4292, 18.4312



6.0104, 3.9575, 3.7729

Inverse Universe

The Inverse Universe completely reimagines the original color for something new.



56.5995, -12.9859, -10.5836



73.4777, -18.9004, -18.2311



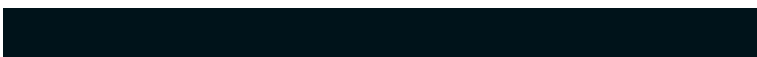
46.2146, 3.9071, -26.8511



30.3958, -3.0036, 0.1342



37.2811, -9.9449, -25.1300



7.2607, -2.6679, -3.3159

Previews

White Background



This preview shows how the HunterLab color 51.2306, 12.4413, 15.0418 looks on a white background.

Color Contrast Check

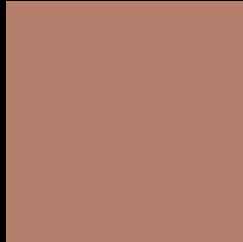
Large Text (above 18pt) WCAG AA ✓ Pass

Any Text WCAG AA × Fail

Large Text (above 18pt) WCAG AAA × Fail

Any Text WCAG AAA × Fail

Black Background



This preview shows how the HunterLab color 51.2306, 12.4413, 15.0418 looks on a black background.

Color Contrast Check

Large Text (above 18pt) WCAG AA ✓ Pass

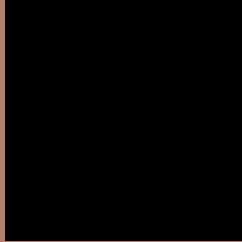
Any Text WCAG AA ✓ Pass

Large Text (above 18pt) WCAG AAA ✓ Pass

Any Text WCAG AAA × Fail

If you want to check with other color combinations, try the [Color Contrast Checker](#).

HunterLab 51.2306, 12.4413, 15.0418 Background



This preview shows how black text looks on a background with the HunterLab color 51.2306, 12.4413, 15.0418.



This preview shows how white text looks on a background with the HunterLab color 51.2306, 12.4413, 15.0418.

Color Blindness Simulation

Color vision deficiency is a very complex topic, and I could not describe the different causes any better than Wikipedia does, so if you want to learn more, you should check out their [article about color blindness](#).

Dichromacy



Original Color

51.2306, 12.4413, 15.0418

Protanopia

51.3649, -3.4723, 12.8678

Deuteranopia

51.3906, 3.4583, 15.3591



Tritanopia

51.0702, 18.2866, 5.6049

Trichromacy



Original Color

51.2306, 12.4413, 15.0418

Protanomaly

51.2583, 1.8214, 13.5463

Deuteranomaly

51.1188, 6.6928, 15.1611

Tritanomaly

50.9624, 16.2132, 9.1142

Monochromacy



Original Color

51.2306, 12.4413, 15.0418

Achromatopsia

51.6097, -2.7538, 2.8041

Achromatomaly

51.1487, 2.2171, 7.4817

CSS Examples

Text

The CSS property to change the color of the text to HunterLab 51.2306, 12.4413, 15.0418 is called "color". The color property can be set on classes, ids or directly on the HTML element.

This example shows how text in the color `rgb(180, 128, 109)` looks like.

```
.text, #text, p{  
    color:rgb(180, 128, 109)  
}
```

If you want to add a text shadow in that color use the text-shadow property, you can generate a text shadow directly with our [CSS Text Shadow Generator](#).

Here you see how black text with a 4 pixel rgb(180, 128, 109) colored shadow looks like.

```
.shadow{ text-shadow: 4px 4px 2px rgb(180, 128, 109) }
```

Border

The CSS property to change the border of an element to HunterLab 51.2306, 12.4413, 15.0418 is called "border". The border property can be set on classes, ids or directly on the HTML element.

This example shows the color as border, it can be applied via the CSS property "border" or "border-color".

```
.border, #border, table{ border:4px solid rgb(180, 128, 109) }
```


If only the border color should be changed use the property `border-color`.

```
.border{ border-color:rgb(180, 128, 109) }
```

If you want to add a box shadow in that color use:

Here you see how a box with a 4 pixel `rgb(180, 128, 109)` colored shadow looks like.

```
.boxshadow{ -moz-box-shadow:4px 4px 4px  
4px rgb(180, 128, 109); -webkit-box-  
shadow:4px 4px 4px 4px rgb(180, 128, 109);  
box-shadow:4px 4px 4px 4px rgb(180, 128,  
109) }
```

Background

The CSS property to change the background color of an element to HunterLab 51.2306, 12.4413, 15.0418 is called "background". The background property can be set on classes, ids or directly on the HTML element.

```
.background, #background, body{  
background: rgb(180, 128, 109) }
```

If only the background color should be changed can be used:

```
.background{ background-color: rgb(180,  
128, 109) }
```

This example shows the color as background, it is applied via the CSS property "background".

To optimize and compress your CSS code, you can use our [online CSS compressor and optimizer](#) based on csstidy. If you want to create a linear or radial gradient as background or border, check our [CSS Gradient Generator](#).

Hey! You found this booklet interesting? Support Converting Colors with the new Membership Option!

The pro membership hides all ads, plus gives you double the colors in the color bucket, and more awesome pro features!

[Learn more, Memberships starting at \\$2.50/m!](#)

**Follow me
on Twitter!**

@ConvertingColor