

Converting Colors

HunterLab(51.2443, 61.2614,
-1.6641)

Have a look what the booklet for
HunterLab(51.2443, 61.2614,
-1.6641) contains.

HunterLab(51.2702, 61.2122, -1.6883)	3
<i>Conversions</i>	4
<i>Details</i>	6
<i>Harmonies</i>	12
<i>Previews</i>	24
<i>Color Blindness Simulation</i>	28
<i>CSS Examples</i>	31

Color

**HunterLab(51.2702, 61.2122,
-1.6883)**

Conversions

Conversions Part 1

Format	Color
Hex	EC5398
RGB	236, 83, 152
RGB Percent	93%, 33%, 60%
CMY	0.0745, 0.6745, 0.4039
CMYK	0.00, 0.65, 0.36, 0.07
HSL	333°, 80%, 63%
HSV	333°, 65%, 93%
XYZ	43.3528, 26.2863, 32.4946
YIQ	136.6130, 69.0390, 53.8950

Conversions

Conversions Part 2

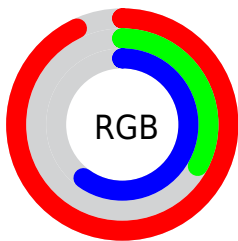
Format	Color
R _Y B	236, 83, 152
Decimal	15487896
CIE Lab	58.31, 64.59, -5.53
CIE LCh	58, 64.825, 355.102
Yxy	26.2877, 0.4245, 0.2574
Android (android.graphics.Color)	4293677976 (0xFFEC5398)
YUV	136.6130, 7.5858, 87.1624
Hunter-Lab	51.2702, 61.2122, -1.6883

Details

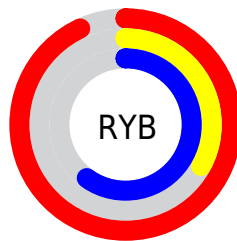
The HunterLab color **51.2702, 61.2122, -1.6883** is a light color, and the websafe version is hex **FF6699**. The color can be described as light muted rose. A complement of this color would be **80.3869, -50.6592, 21.6797**, and the grayscale version is **49.8153, -2.6580, 2.7066**.

A 20% lighter version of the original color is **66.9074, 48.0676, -9.6750**, and **32.0935, 56.8457, -1.9741** is the 20% darker color. If you saturate the color by 10%, you get **47.8208, 68.7580, 0.3659**, and if you desaturate by 10%, it is **55.6614, 52.0232, -2.6875**.

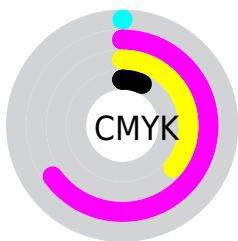
Distribution



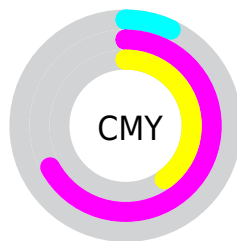
- Red (93%)
- Green (33%)
- Blue (60%)



- Red (93%)
- Yellow (33%)
- Blue (60%)



- Cyan (0%)
- Magenta (65%)
- Yellow (36%)
- Black (7%)



- Cyan (7%)
- Magenta (67%)
- Yellow (40%)

Brightness & Saturation Gradients

These gradients show how the HunterLab color 51.2702, 61.2122, -1.6883 changes by changing the brightness by 10 percent. The first figure shows a shift by +10% for each color and the second figure -10%.

Similar to the brightness gradients but the following saturation gradients show a change of the HunterLab color 51.2702, 61.2122, -1.6883 by changing the saturation by 10% instead.

■ 51.2702, 61.2122,
-1.6883

■ 51.2702, 61.2122,
-1.6883

168.5799, 76.5982,
2.6720

■ 41.2783, 59.0414,
-1.9463

■ 73.3067, 65.2850,
-1.0088

■ 32.0348, 56.8297,
-2.1446

■ 85.2701, 67.1770,
-0.5990

■ 23.6077, 54.6644,
-2.2733

■ 97.8216, 68.9710,
-0.1466

■ 16.0853, 52.7872,
-2.3205

■ 110.9348, 70.6701,
0.3456

■ 9.5933, 51.9499,
-2.2696

124.5866, 72.2781,
0.8755

0.0000, INF, -NF

0.0000, INF, NaN

138.7567, 73.7993,

1.4409

0.0000, NaN, NaN

153.4266, 75.2380,
2.0403

0.0000, NaN, NaN

■ 51.2702, 61.2122,
-1.6883

■ 51.2702, 61.2122,
-1.6883

■ 47.8208, 68.7580,
0.3659

■ 55.6614, 52.0232,
-2.6875

■ 45.3780, 73.9549,
3.4285

■ 60.8808, 41.9035,
-2.7276

■ 43.9272, 76.3792,
7.2673

■ 66.8109, 31.3777,
-1.9587

■ 43.4538, 76.8310,
9.3577

■ 73.3419, 20.7802,
-0.5387

■ 80.3797, 10.2940,
1.3945

■ 87.8470, 0.0023,
3.7305

■ 95.6814, -10.0696,
6.3841

■ 98.2715, -11.4019,
3.2753

Harmonies

Analogous

The Analogous color harmony consists of three colors that are next to each other on the color wheel.



51.2716, 48.1674, -35.0768



51.2702, 61.2122, -1.6883



51.2716, 54.3895, 19.8572

Triad

The Triadic color harmony groups three colors that are evenly spaced from another and form a triangle on the color wheel.



51.2716, 61.2084, -1.6869



51.2716, -23.2756, 30.6254



51.2716, -29.5913, -57.8815

Complementary

The Complementary color scheme is a pair of colors which are on the opposite of each other on the color wheel.



51.2702, 61.2122, -1.6883



80.3869, -50.6592, 21.6797

Split Complementary

Split-complementary colors differ from the complementary color scheme. The scheme consists of three colors, the original color and two neighbors of the complement color.



51.2716, -42.3356, -23.4256



51.2702, 61.2122, -1.6883



51.2716, -39.2635, 24.0172

Square

The Square scheme is like the rectangle color scheme, but the four colors are evenly spaced on the color wheel.



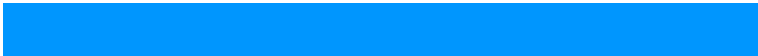
51.2716, 61.2084, -1.6869



51.2716, 1.8494, 31.8542



51.2716, -45.4628, 6.8979



51.2716, -7.1705, -76.7434

Rectangle

The Rectangle color scheme consists of four colors that form a rectangle on the color wheel.



51.2702, 61.2122, -1.6883



51.2716, 40.1202, 27.1485



51.2716, -45.4628, 6.8979



51.2716, -34.9460, -47.0781

Sweetspot

The Sweet Spot groups the original color and five complimentary colors.



51.2716, 61.2084, -1.6869



84.4343, 16.0867, 0.5648



44.9454, 55.0616, -76.0249



38.0463, 8.9660, -0.0152

0.0000, NaN, NaN



46.2646, -2.4686, 2.5136

Same Dimension

The Same Dimension uses a secret algorithm to generate beautiful new colors.



51.2716, 61.2084, -1.6869



51.1537, 77.3879, 1.4530



50.4528, 51.9963, 22.3799



38.9448, 2.1920, 1.2022



32.3011, 57.1858, 6.3822



9.1567, 16.4080, 0.2815

Inverse Universe

The Inverse Universe completely reimagines the original color for something new.



51.2716, 61.2084, -1.6869



51.1537, 77.3879, 1.4530



80.6173, -36.4469, -9.3250



38.9448, 2.1920, 1.2022



32.3011, 57.1858, 6.3822



9.1567, 16.4080, 0.2815

Previews

White Background



This preview shows how the HunterLab color 51.2702, 61.2122, -1.6883 looks on a white background.

Color Contrast Check

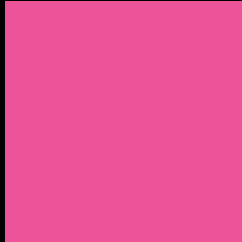
Large Text (above 18pt) WCAG AA ✓ Pass

Any Text WCAG AA × Fail

Large Text (above 18pt) WCAG AAA × Fail

Any Text WCAG AAA × Fail

Black Background



This preview shows how the HunterLab color 51.2702, 61.2122, -1.6883 looks on a black background.

Color Contrast Check

Large Text (above 18pt) WCAG AA ✓ Pass

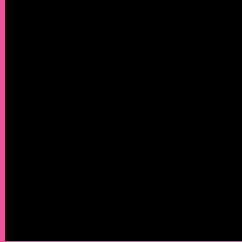
Any Text WCAG AA ✓ Pass

Large Text (above 18pt) WCAG AAA ✓ Pass

Any Text WCAG AAA × Fail

If you want to check with other color combinations, try the [Color Contrast Checker](#).

HunterLab 51.2702, 61.2122, -1.6883 Background



This preview shows how black text looks on a background with the HunterLab color 51.2702, 61.2122, -1.6883.



This preview shows how white text looks on a background with the HunterLab color 51.2702, 61.2122, -1.6883.

-1.6883.

Color Blindness Simulation

Color vision deficiency is a very complex topic, and I could not describe the different causes any better than Wikipedia does, so if you want to learn more, you should check out their [article about color blindness](#).

Dichromacy



Original Color

51.2702, 61.2122, -1.6883

Protanopia

51.6250, 3.6012, -23.4182

Deuteranopia

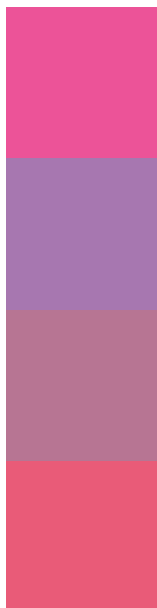
51.2809, 3.4996, 1.1539



Tritanopia

51.2638, 48.5924, 18.1997

Trichromacy



Original Color

51.2702, 61.2122, -1.6883

Protanomaly

49.5416, 22.7249, -18.2314

Deuteranomaly

49.8963, 24.1401, -1.6320

Tritanomaly

51.1487, 52.6497, 11.8417

Monochromacy



Original Color

51.2702, 61.2122, -1.6883

Achromatopsia

50.0158, -2.6687, 2.7175

Achromatomaly

48.5384, 19.7831, -1.0043

CSS Examples

Text

The CSS property to change the color of the text to HunterLab 51.2702, 61.2122, -1.6883 is called "color". The color property can be set on classes, ids or directly on the HTML element.

This example shows how text in the color `rgb(236, 83, 152)` looks like.

```
.text, #text, p{  
    color:rgb(236, 83, 152)  
}
```

If you want to add a text shadow in that color use the text-shadow property, you can generate a text shadow directly with our [CSS Text Shadow Generator](#).

Here you see how black text with a 4 pixel rgb(236, 83, 152) colored shadow looks like.

```
.shadow{ text-shadow: 4px 4px 2px rgb(236, 83, 152) }
```

Border

The CSS property to change the border of an element to HunterLab 51.2702, 61.2122, -1.6883 is called "border". The border property can be set on classes, ids or directly on the HTML element.

This example shows the color as border, it can be applied via the CSS property "border" or "border-color".

```
.border, #border, table{ border:4px solid rgb(236, 83, 152) }
```


If only the border color should be changed use the property border-color.

```
.border{ border-color:rgb(236, 83, 152) }
```

If you want to add a box shadow in that color use:

Here you see how a box with a 4 pixel rgb(236, 83, 152) colored shadow looks like.

```
.boxshadow{ -moz-box-shadow:4px 4px 4px  
4px rgb(236, 83, 152); -webkit-box-  
shadow:4px 4px 4px 4px rgb(236, 83, 152);  
box-shadow:4px 4px 4px 4px rgb(236, 83,  
152) }
```

Background

The CSS property to change the background color of an element to HunterLab 51.2702, 61.2122, -1.6883 is called "background". The background property can be set on classes, ids or directly on the HTML element.

```
.background, #background, body{  
background: rgb(236, 83, 152) }
```

If only the background color should be changed can be used:

```
.background{ background-color: rgb(236, 83,  
152) }
```

This example shows the color as background, it is applied via the CSS property "background".

To optimize and compress your CSS code, you can use our [online CSS compressor and optimizer](#) based on csstidy. If you want to create a linear or radial gradient as background or border, check our [CSS Gradient Generator](#).

Hey! You found this booklet interesting? Support Converting Colors with the new Membership Option!

The pro membership hides all ads, plus gives you double the colors in the color bucket, and more awesome pro features!

[Learn more, Memberships starting at \\$2.50/m!](#)

**Follow me
on Twitter!**

@ConvertingColor