

Converting Colors

HunterLab(51.2719, 18.5869,
8.3032)

Have a look what the booklet for
HunterLab(51.2719, 18.5869,
8.3032) contains.

HunterLab(51.2719, 18.5869, 8.3032)	3
<i>Conversions</i>	4
<i>Details</i>	6
<i>Harmonies</i>	12
<i>Previews</i>	24
<i>Color Blindness Simulation</i>	28
<i>CSS Examples</i>	31

Color

**HunterLab(51.2719, 18.5869,
8.3032)**

Conversions

Conversions Part 1

Format	Color
Hex	B97C80
RGB	185, 124, 128
RGB Percent	73%, 49%, 50%
CMY	0.2745, 0.5137, 0.4980
CMYK	0.00, 0.33, 0.31, 0.27
HSL	356°, 30%, 61%
HSV	356°, 33%, 73%
XYZ	31.1115, 26.2881, 23.8564
YIQ	142.6950, 35.0720, 14.1760

Conversions

Conversions Part 2

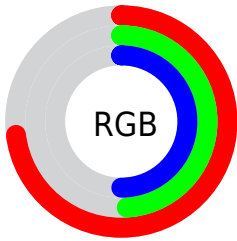
Format	Color
R _Y B	185, 124, 128
Decimal	12156032
CIE Lab	58.31, 24.28, 7.55
CIE LCh	58, 25.430, 17.270
Yxy	26.2893, 0.3829, 0.3235
Android (android.graphics.Color)	4290346112 (0xFFB97C80)
YUV	142.6950, -7.2446, 37.1015
Hunter-Lab	51.2719, 18.5869, 8.3032

Details

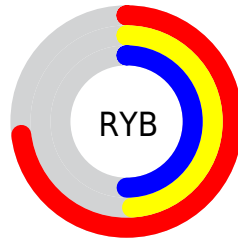
The HunterLab color **51.2719, 18.5869, 8.3032** is a dark color, and the websafe version is hex **996666**. A complement of this color would be **65.0536, -20.5441, -0.1188**, and the grayscale version is **52.3067, -2.7910, 2.8419**.

A 20% lighter version of the original color is **73.2514, 19.6772, 10.0977**, and **31.9498, 17.0860, 6.2594** is the 20% darker color. If you saturate the color by 10%, you get **46.5424, 25.7994, 10.0784**, and if you desaturate by 10%, it is **56.4483, 11.5410, 6.7258**.

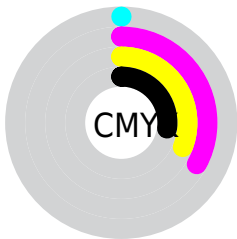
Distribution



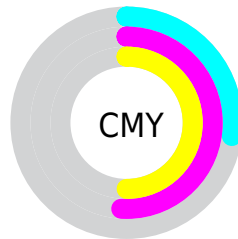
- Red (73%)
- Green (49%)
- Blue (50%)



- Red (73%)
- Yellow (49%)
- Blue (50%)



- Cyan (0%)
- Magenta (33%)
- Yellow (31%)
- Black (27%)



- Cyan (27%)
- Magenta (51%)
- Yellow (50%)

Brightness & Saturation Gradients

These gradients show how the HunterLab color 51.2719, 18.5869, 8.3032 changes by changing the brightness by 10 percent. The first figure shows a shift by +10% for each color and the second figure -10%.

Similar to the brightness gradients but the following saturation gradients show a change of the HunterLab color 51.2719, 18.5869, 8.3032 by changing the saturation by 10% instead.

■ 51.2719, 18.5869,
8.3032

■ 51.2719, 18.5869,
8.3032

168.5822, 21.4366,
17.6472

■ 41.2798, 17.8606,
7.3280

■ 73.3085, 19.7318,
10.2808

■ 32.0362, 17.0187,
6.3536

■ 85.2719, 20.1756,
11.2870

■ 23.6089, 16.0420,
5.3716

■ 97.8235, 20.5436,
12.3074

■ 16.0863, 14.9132,
4.3657

110.9368, 20.8420,
13.3430

■ 9.5942, 13.6293,
3.7869

124.5887, 21.0763,
14.3944

0.0000, INF, NaN

0.0000, NaN, NaN

138.7588, 21.2510,

15.4620

0.0000, NaN, NaN

153.4288, 21.3699,
16.5463

0.0000, NaN, NaN

■ 51.2719, 18.5869,
8.3032

■ 51.2719, 18.5869,
8.3032

■ 46.5424, 25.7994,
10.0784

■ 56.4483, 11.5410,
6.7258

■ 42.3430, 33.0209,
12.0305

■ 61.9959, 4.7364,
5.3363

■ 38.7731, 39.9411,
14.0974

■ 67.8579, -1.8166,
4.1170

■ 35.9306, 46.0869,
16.1533

■ 73.9884, -8.1330,
3.0458

■ 33.8894, 50.8873,
18.0128

■ 80.3509, -14.2393,
2.1012

■ 32.6640, 53.8777,
19.4749

■ 86.9164, -20.1652,
1.2640

■ 32.1576, 55.1544,
20.1325

■ 93.6614, -25.9390,
0.5176

■ 94.3686, -25.5176,
-1.7375

Harmonies

Analogous

The Analogous color harmony consists of three colors that are next to each other on the color wheel.



51.2731, 19.0769, -1.7451



51.2719, 18.5869, 8.3032



51.2731, 12.0915, 15.2605

Triad

The Triadic color harmony groups three colors that are evenly spaced from another and form a triangle on the color wheel.



51.2731, 18.5846, 8.3041



51.2731, -17.0877, 14.4446



51.2731, -7.2249, -20.3966

Complementary

The Complementary color scheme is a pair of colors which are on the opposite of each other on the color wheel.



51.2719, 18.5869, 8.3032



65.0536, -20.5441, -0.1188

Split Complementary

Split-complementary colors differ from the complementary color scheme. The scheme consists of three colors, the original color and two neighbors of the complement color.



51.2731, -16.0538, -13.9003



51.2719, 18.5869, 8.3032



51.2731, -21.4238, 6.9470

Square

The Square scheme is like the rectangle color scheme, but the four colors are evenly spaced on the color wheel.



51.2731, 18.5846, 8.3041



51.2731, -8.7456, 18.2702



51.2731, -21.0617, -3.4118



51.2731, 3.5585, -19.8229

Rectangle

The Rectangle color scheme consists of four colors that form a rectangle on the color wheel.



51.2719, 18.5869, 8.3032



51.2731, 5.5154, 17.8449



51.2731, -21.0617, -3.4118



51.2731, -10.5013, -18.9191

Sweetspot

The Sweet Spot groups the original color and five complimentary colors.



51.2731, 18.5846, 8.3041



85.1303, 3.8434, 6.6617



52.6641, 26.4866, -18.7587



39.0260, 2.3582, 3.2027



96.5975, -5.1542, 5.2483



43.2801, -2.3093, 2.3515

Same Dimension

The Same Dimension uses a secret algorithm to generate beautiful new colors.



51.2731, 18.5846, 8.3041



63.6947, 32.2784, 12.9148



58.0705, 4.7998, 16.3959



30.0358, 1.0889, 2.2841



26.5432, 45.5403, 16.4994



5.0161, 8.6704, 2.6189

Inverse Universe

The Inverse Universe completely reimagines the original color for something new.



51.2731, 18.5846, 8.3041



63.6947, 32.2784, 12.9148



56.9530, -7.5423, -12.8203



30.0358, 1.0889, 2.2841



26.5432, 45.5403, 16.4994



5.0161, 8.6704, 2.6189

Previews

White Background



This preview shows how the HunterLab color 51.2719, 18.5869, 8.3032 looks on a white background.

Color Contrast Check

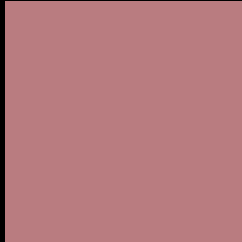
Large Text (above 18pt) WCAG AA ✓ Pass

Any Text WCAG AA × Fail

Large Text (above 18pt) WCAG AAA × Fail

Any Text WCAG AAA × Fail

Black Background



This preview shows how the HunterLab color 51.2719, 18.5869, 8.3032 looks on a black background.

Color Contrast Check

Large Text (above 18pt) WCAG AA ✓ Pass

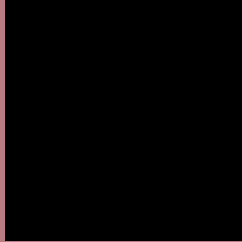
Any Text WCAG AA ✓ Pass

Large Text (above 18pt) WCAG AAA ✓ Pass

Any Text WCAG AAA × Fail

If you want to check with other color combinations, try the [Color Contrast Checker](#).

HunterLab 51.2719, 18.5869, 8.3032 Background



This preview shows how black text looks on a background with the HunterLab color 51.2719, 18.5869, 8.3032.



This preview shows how white text looks on a background with the HunterLab color 51.2719, 18.5869,

Color Blindness Simulation

Color vision deficiency is a very complex topic, and I could not describe the different causes any better than Wikipedia does, so if you want to learn more, you should check out their [article about color blindness](#).

Dichromacy



Original Color

51.2719, 18.5869, 8.3032

Protanopia

51.4700, -2.0015, 4.4178

Deuteranopia

51.1910, 3.6143, 8.7454



Tritanopia

51.1602, 19.7610, 6.1541

Trichromacy



Original Color

51.2719, 18.5869, 8.3032

Protanomaly

51.1296, 5.2244, 5.4433

Deuteranomaly

51.0781, 8.7972, 8.3214

Tritanomaly

51.1067, 19.4910, 6.9219

Monochromacy



Original Color

51.2719, 18.5869, 8.3032

Achromatopsia

52.4097, -2.7964, 2.8475

Achromatomaly

51.6840, 4.5020, 4.3430

CSS Examples

Text

The CSS property to change the color of the text to HunterLab 51.2719, 18.5869, 8.3032 is called "color". The color property can be set on classes, ids or directly on the HTML element.

This example shows how text in the color `rgb(185, 124, 128)` looks like.

```
.text, #text, p{  
    color:rgb(185, 124, 128)  
}
```

If you want to add a text shadow in that color use the text-shadow property, you can generate a text shadow directly with our [CSS Text Shadow Generator](#).

Here you see how black text with a 4 pixel rgb(185, 124, 128) colored shadow looks like.

```
.shadow{ text-shadow: 4px 4px 2px rgb(185, 124, 128) }
```

Border

The CSS property to change the border of an element to HunterLab 51.2719, 18.5869, 8.3032 is called "border". The border property can be set on classes, ids or directly on the HTML element.

This example shows the color as border, it can be applied via the CSS property "border" or "border-color".

```
.border, #border, table{ border:4px solid rgb(185, 124, 128) }
```


If only the border color should be changed use the property `border-color`.

```
.border{ border-color:rgb(185, 124, 128) }
```

If you want to add a box shadow in that color use:

Here you see how a box with a 4 pixel `rgb(185, 124, 128)` colored shadow looks like.

```
.boxshadow{ -moz-box-shadow:4px 4px 4px  
4px rgb(185, 124, 128); -webkit-box-  
shadow:4px 4px 4px 4px rgb(185, 124, 128);  
box-shadow:4px 4px 4px 4px rgb(185, 124,  
128) }
```

Background

The CSS property to change the background color of an element to HunterLab 51.2719, 18.5869, 8.3032 is called "background". The background property can be set on classes, ids or directly on the HTML element.

```
.background, #background, body{  
background: rgb(185, 124, 128) }
```

If only the background color should be changed can be used:

```
.background{ background-color: rgb(185,  
124, 128) }
```

This example shows the color as background, it is applied via the CSS property "background".

To optimize and compress your CSS code, you can use our [online CSS compressor and optimizer](#) based on csstidy. If you want to create a linear or radial gradient as background or border, check our [CSS Gradient Generator](#).

Hey! You found this booklet interesting? Support Converting Colors with the new Membership Option!

The pro membership hides all ads, plus gives you double the colors in the color bucket, and more awesome pro features!

[Learn more, Memberships starting at \\$2.50/m!](#)

**Follow me
on Twitter!**

@ConvertingColor