

Converting Colors

HunterLab(51.2937, 14.4780,
23.9883)

Have a look what the booklet for
HunterLab(51.2937, 14.4780,
23.9883) contains.

HunterLab(51.3718, 14.3412, 24.0148)	3
<i>Conversions</i>	4
<i>Details</i>	6
<i>Harmonies</i>	12
<i>Previews</i>	24
<i>Color Blindness Simulation</i>	28
<i>CSS Examples</i>	31

Color

**HunterLab(51.3718, 14.3412,
24.0148)**

Conversions

Conversions Part 1

Format	Color
Hex	BE7E4C
RGB	190, 126, 76
RGB Percent	75%, 49%, 30%
CMY	0.2549, 0.5059, 0.7020
CMYK	0.00, 0.34, 0.60, 0.25
HSL	26°, 47%, 52%
HSV	26°, 60%, 75%
XYZ	30.0005, 26.3906, 10.3501
YIQ	139.4360, 54.1940, -1.9820

Conversions

Conversions Part 2

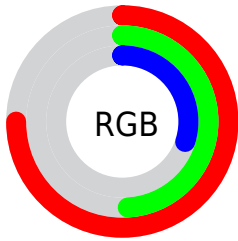
Format	Color
R_{YB}	190, 165, 76
Decimal	12484172
CIE Lab	58.41, 19.72, 37.01
CIE LCh	58, 41.934, 61.955
Yxy	26.3919, 0.4495, 0.3954
Android (android.graphics.Color)	4290674252 (0xFFBE7E4C)
YUV	139.4360, -31.2739, 44.3446
Hunter-Lab	51.3718, 14.3412, 24.0148

Details

The HunterLab color **51.3718, 14.3412, 24.0148** is a dark color, and the websafe version is hex **CC9966**. A complement of this color would be **48.9991, -6.8709, -28.8734**, and the grayscale version is **51.0920, -2.7261, 2.7759**.

A 20% lighter version of the original color is **73.4073, 14.8895, 29.5513**, and **32.2227, 13.1238, 17.9464** is the 20% darker color. If you saturate the color by 10%, you get **48.5608, 18.4672, 25.5199**, and if you desaturate by 10%, it is **54.3795, 10.5309, 21.8883**.

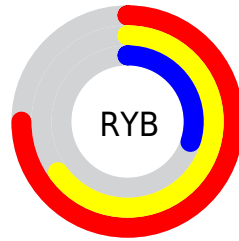
Distribution



Red (75%)

Green (49%)

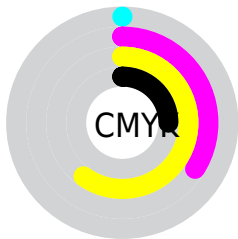
Blue (30%)



Red (75%)

Yellow (65%)

Blue (30%)

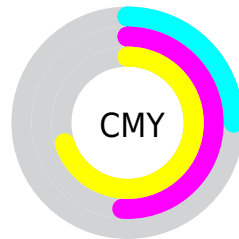


Cyan (0%)

Magenta (34%)

Yellow (60%)

Black (25%)



Cyan (25%)

Magenta (51%)

Yellow (70%)

Brightness & Saturation Gradients

These gradients show how the HunterLab color 51.3718, 14.3412, 24.0148 changes by changing the brightness by 10 percent. The first figure shows a shift by +10% for each color and the second figure -10%.

Similar to the brightness gradients but the following saturation gradients show a change of the HunterLab color 51.3718, 14.3412, 24.0148 by changing the saturation by 10% instead.

■ 51.3718, 14.3412,
24.0148

■ 51.3718, 14.3412,
24.0148

168.7308, 15.5522,
46.5227

■ 41.3728, 13.8324,
21.0455

■ 73.4211, 15.0758,
29.5340

■ 32.1217, 13.2173,
17.8827

■ 85.3904, 15.3262,
32.1376

■ 23.6861, 12.4757,
14.4859

■ 97.9475, 15.5077,
34.6633

■ 16.1543, 11.5852,
11.3080

■ 111.0661, 15.6259,
37.1250

■ 9.6514, 10.5237,
6.7560

■ 124.7231, 15.6857,
39.5337

0.0000, INF, NaN

0.0000, NaN, NaN

138.8981, 15.6910,

41.8983

0.0000, NaN, NaN

153.5729, 15.6455,
44.2260

0.0000, NaN, NaN

■ 51.3718, 14.3412,
24.0148

■ 51.3718, 14.3412,
24.0148

■ 48.5608, 18.4672,
25.5199

■ 54.3795, 10.5309,
21.8883

■ 45.9606, 22.8898,
26.3558

■ 57.5625, 7.0513,
19.1954

■ 43.5900, 27.5498,
26.5042

■ 60.9059, 3.8928,
15.9961

■ 41.4560, 32.3169,
26.1107

■ 64.3948, 1.0401,
12.3467

■ 41.4559, 32.3173,
26.1107

■ 68.0160, -1.5265,
8.2988

■ 71.7578, -3.8290,
3.8984

■ 75.6098, -5.8896,
-0.8149

■ 79.5627, -7.7298,
-5.8063

■ 83.6086, -9.3700,
-11.0464

Harmonies

Analogous

The Analogous color harmony consists of three colors that are next to each other on the color wheel.



51.3731, 29.6005, 17.2029



51.3718, 14.3412, 24.0148



51.3731, -3.9051, 25.8377

Triad

The Triadic color harmony groups three colors that are evenly spaced from another and form a triangle on the color wheel.



51.3731, 14.3385, 24.0154



51.3731, -32.6418, 1.6744



51.3731, 16.6314, -33.1580

Complementary

The Complementary color scheme is a pair of colors which are on the opposite of each other on the color wheel.



51.3718, 14.3412, 24.0148



48.9991, -6.8709, -28.8734

Split Complementary

Split-complementary colors differ from the complementary color scheme. The scheme consists of three colors, the original color and two neighbors of the complement color.



51.3731, -1.5723, -41.4817



51.3718, 14.3412, 24.0148



51.3731, -28.6523, -17.5657

Square

The Square scheme is like the rectangle color scheme, but the four colors are evenly spaced on the color wheel.



51.3731, 14.3385, 24.0154



51.3731, -29.5697, 15.8576



51.3731, -17.8500, -34.9843



51.3731, 31.0459, -14.9647

Rectangle

The Rectangle color scheme consists of four colors that form a rectangle on the color wheel.



51.3718, 14.3412, 24.0148



51.3731, -14.9115, 24.7395



51.3731, -17.8500, -34.9843



51.3731, 10.6735, -37.4361

Sweetspot

The Sweet Spot groups the original color and five complimentary colors.



51.3731, 14.3385, 24.0154



87.5063, 0.7837, 15.7263



42.4586, 45.9244, -8.0046



40.3438, 0.8693, 8.0884



98.8636, -5.2751, 5.3714



45.2661, -2.4153, 2.4594

Same Dimension

The Same Dimension uses a secret algorithm to generate beautiful new colors.



51.3731, 14.3385, 24.0154



64.2303, 26.7053, 34.8099



67.1481, -12.9063, 35.1129



31.9475, -0.7883, 3.7551



34.0272, 25.8008, 21.4191



7.6413, 3.0376, 4.7617

Inverse Universe

The Inverse Universe completely reimagines the original color for something new.



48.9991, -6.8709, -28.8734



60.3938, -6.5394, -49.5659



33.9605, 21.5881, -63.7447



31.7645, -2.4907, -0.3907



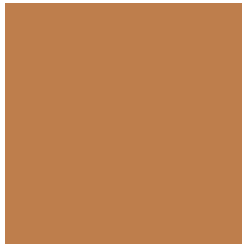
30.9443, 1.9851, -42.9630



7.0941, -1.2102, -6.2545

Previews

White Background



This preview shows how the HunterLab color 51.3718, 14.3412, 24.0148 looks on a white background.

Color Contrast Check

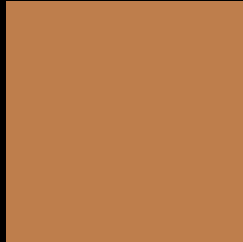
Large Text (above 18pt) WCAG AA ✓ Pass

Any Text WCAG AA × Fail

Large Text (above 18pt) WCAG AAA × Fail

Any Text WCAG AAA × Fail

Black Background



This preview shows how the HunterLab color 51.3718, 14.3412, 24.0148 looks on a black background.

Color Contrast Check

Large Text (above 18pt) WCAG AA ✓ Pass

Any Text WCAG AA ✓ Pass

Large Text (above 18pt) WCAG AAA ✓ Pass

Any Text WCAG AAA × Fail

If you want to check with other color combinations, try the [Color Contrast Checker](#).

HunterLab 51.3718, 14.3412, 24.0148 Background



This preview shows how black text looks on a background with the HunterLab color 51.3718, 14.3412, 24.0148.



This preview shows how white text looks on a background with the HunterLab color 51.3718, 14.3412,

Color Blindness Simulation

Color vision deficiency is a very complex topic, and I could not describe the different causes any better than Wikipedia does, so if you want to learn more, you should check out their [article about color blindness](#).

Dichromacy



Original Color

51.3718, 14.3412, 24.0148

Protanopia

51.4916, -5.7458, 22.6647

Deuteranopia

51.4090, 3.7641, 24.2721



Tritanopia

51.4658, 24.1366, 8.2092

Trichromacy



Original Color

51.3718, 14.3412, 24.0148

Protanomaly

51.3696, 0.9760, 23.1331

Deuteranomaly

51.3072, 7.5445, 24.0550

Tritanomaly

51.3637, 20.5083, 14.9808

Monochromacy



Original Color

51.3718, 14.3412, 24.0148

Achromatopsia

50.8117, -2.7112, 2.7607

Achromatomaly

50.5769, 2.4682, 11.8390

CSS Examples

Text

The CSS property to change the color of the text to HunterLab 51.3718, 14.3412, 24.0148 is called "color". The color property can be set on classes, ids or directly on the HTML element.

This example shows how text in the color `rgb(190, 126, 76)` looks like.

```
.text, #text, p{  
    color:rgb(190, 126, 76)  
}
```

If you want to add a text shadow in that color use the text-shadow property, you can generate a text shadow directly with our [CSS Text Shadow Generator](#).

Here you see how black text with a 4 pixel rgb(190, 126, 76) colored shadow looks like.

```
.shadow{ text-shadow: 4px 4px 2px rgb(190, 126, 76) }
```

Border

The CSS property to change the border of an element to HunterLab 51.3718, 14.3412, 24.0148 is called "border". The border property can be set on classes, ids or directly on the HTML element.

This example shows the color as border, it can be applied via the CSS property "border" or "border-color".

```
.border, #border, table{ border:4px solid rgb(190, 126, 76) }
```


If only the border color should be changed use the property `border-color`.

```
.border{ border-color:rgb(190, 126, 76) }
```

If you want to add a box shadow in that color use:

Here you see how a box with a 4 pixel `rgb(190, 126, 76)` colored shadow looks like.

```
.boxshadow{ -moz-box-shadow:4px 4px 4px  
4px rgb(190, 126, 76); -webkit-box-  
shadow:4px 4px 4px 4px rgb(190, 126, 76);  
box-shadow:4px 4px 4px 4px rgb(190, 126,  
76) }
```

Background

The CSS property to change the background color of an element to HunterLab 51.3718, 14.3412, 24.0148 is called "background". The background property can be set on classes, ids or directly on the HTML element.

```
.background, #background, body{  
background: rgb(190, 126, 76) }
```

If only the background color should be changed can be used:

```
.background{ background-color: rgb(190,  
126, 76) }
```

This example shows the color as background, it is applied via the CSS property "background".

To optimize and compress your CSS code, you can use our [online CSS compressor and optimizer](#) based on csstidy. If you want to create a linear or radial gradient as background or border, check our [CSS Gradient Generator](#).

Hey! You found this booklet interesting? Support Converting Colors with the new Membership Option!

The pro membership hides all ads, plus gives you double the colors in the color bucket, and more awesome pro features!

[Learn more, Memberships starting at \\$2.50/m!](#)

**Follow me
on Twitter!**

@ConvertingColor