

Converting Colors

HunterLab(51.3576, 25.0218,
12.4827)

Have a look what the booklet for
HunterLab(51.3576, 25.0218,
12.4827) contains.

HunterLab(51.4624, 24.7375, 12.7545)	3
<i>Conversions</i>	4
<i>Details</i>	6
<i>Harmonies</i>	12
<i>Previews</i>	24
<i>Color Blindness Simulation</i>	28
<i>CSS Examples</i>	31

Color

**HunterLab(51.4624, 24.7375,
12.7545)**

Conversions

Conversions Part 1

Format	Color
Hex	C67775
RGB	198, 119, 117
RGB Percent	78%, 47%, 46%
CMY	0.2235, 0.5333, 0.5412
CMYK	0.00, 0.40, 0.41, 0.22
HSL	1°, 42%, 62%
HSV	1°, 41%, 78%
XYZ	33.0964, 26.4838, 20.1971
YIQ	142.3930, 47.7260, 16.1260

Conversions

Conversions Part 2

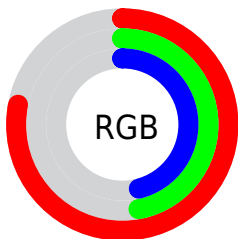
Format	Color
R_{YB}	198, 119, 117
Decimal	13006709
CIE _{Lab}	58.49, 30.67, 14.38
CIE _{LCh}	58, 33.871, 25.116
Yxy	26.4851, 0.4149, 0.3320
Android (android.graphics.Color)	4291196789 (0xFFC67775)
YUV	142.3930, -12.5187, 48.7673
Hunter-Lab	51.4624, 24.7375, 12.7545

Details

The HunterLab color **51.4624, 24.7375, 12.7545** is a dark color, and the websafe version is hex **CC6666**. A complement of this color would be **68.8019, -23.7145, -4.0597**, and the grayscale version is **52.2028, -2.7854, 2.8363**.

A 20% lighter version of the original color is **73.2322, 25.7782, 15.1868**, and **32.1693, 22.4230, 9.8383** is the 20% darker color. If you saturate the color by 10%, you get **46.8280, 32.3438, 15.0402**, and if you desaturate by 10%, it is **56.6338, 17.2679, 10.5011**.

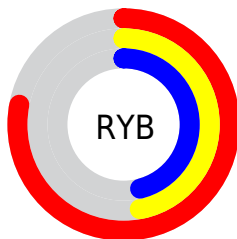
Distribution



Red (78%)

Green (47%)

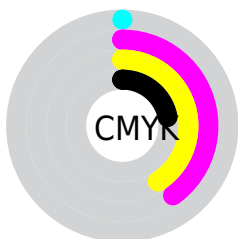
Blue (46%)



Red (78%)

Yellow (47%)

Blue (46%)

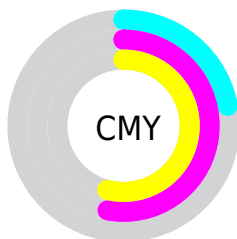


Cyan (0%)

Magenta (40%)

Yellow (41%)

Black (22%)



Cyan (22%)

Magenta (53%)

Yellow (54%)

Brightness & Saturation Gradients

These gradients show how the HunterLab color 51.4624, 24.7375, 12.7545 changes by changing the brightness by 10 percent. The first figure shows a shift by +10% for each color and the second figure -10%.

Similar to the brightness gradients but the following saturation gradients show a change of the HunterLab color 51.4624, 24.7375, 12.7545 by changing the saturation by 10% instead.

■ 51.4624, 24.7375,
12.7545

■ 51.4624, 24.7375,
12.7545

168.8654, 29.7881,
24.9436

■ 41.4571, 23.7265,
11.3529

■ 73.5231, 26.4248,
15.4908

■ 32.1991, 22.5932,
9.9090

■ 85.4977, 27.1271,
16.8406

■ 23.7561, 21.3227,
8.4003

■ 98.0598, 27.7456,
18.1857

■ 16.2159, 19.9110,
6.7870

111.1832, 28.2870,
19.5298

■ 9.7033, 18.3981,
6.6772

124.8449, 28.7573,
20.8757

0.0000, INF, NaN

0.0000, NaN, NaN

139.0243, 29.1614,

22.2256

0.0000, NaN, NaN

153.7033, 29.5037,
23.5811

0.0000, NaN, NaN

■ 51.4624, 24.7375,
12.7545

■ 51.4624, 24.7375,
12.7545

■ 46.8280, 32.3438,
15.0402

■ 56.6338, 17.2679,
10.5011

■ 42.8266, 39.8368,
17.2637

■ 62.2516, 10.0668,
8.3245

■ 39.5636, 46.7831,
19.2785

■ 68.2459, 3.1714,
6.2433

■ 37.1265, 52.6056,
20.8965

■ 74.5595, -3.4244,
4.2586

■ 35.5539, 56.7352,
21.9470

■ 81.1467, -9.7473,
2.3638

■ 34.8025, 58.8148,
22.4748

■ 87.9716, -15.8320,
0.5487

■ 94.9846, -21.8285,
-0.9078

■ 95.2606, -22.2379,
-0.5739

Harmonies

Analogous

The Analogous color harmony consists of three colors that are next to each other on the color wheel.



51.4637, 27.7761, 0.5128



51.4624, 24.7375, 12.7545



51.4637, 14.0261, 20.0345

Triad

The Triadic color harmony groups three colors that are evenly spaced from another and form a triangle on the color wheel.



51.4637, 24.7348, 12.7554



51.4637, -23.5095, 15.6804



51.4637, -5.0802, -30.8711

Complementary

The Complementary color scheme is a pair of colors which are on the opposite of each other on the color wheel.



51.4624, 24.7375, 12.7545



68.8019, -23.7145, -4.0597

Split Complementary

Split-complementary colors differ from the complementary color scheme. The scheme consists of three colors, the original color and two neighbors of the complement color.



51.4637, -17.6169, -23.7602



51.4624, 24.7375, 12.7545



51.4637, -27.4867, 4.9893

Square

The Square scheme is like the rectangle color scheme, but the four colors are evenly spaced on the color wheel.



51.4637, 24.7348, 12.7554



51.4637, -13.9592, 21.3699



51.4637, -25.4533, -9.6503



51.4637, 9.5119, -27.1325

Rectangle

The Rectangle color scheme consists of four colors that form a rectangle on the color wheel.



51.4624, 24.7375, 12.7545



51.4637, 4.5426, 22.2794



51.4637, -25.4533, -9.6503



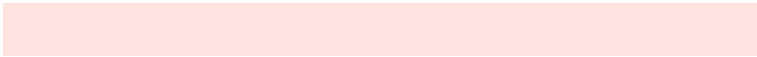
51.4637, -9.6555, -29.6248

Sweetspot

The Sweet Spot groups the original color and five complimentary colors.



51.4637, 24.7348, 12.7554



89.7770, 5.3642, 8.6529



53.6132, 38.3145, -24.4773



41.0370, 3.0369, 4.1707

0.0000, NaN, NaN



46.2646, -2.4686, 2.5136

Same Dimension

The Same Dimension uses a secret algorithm to generate beautiful new colors.



51.4637, 24.7348, 12.7554



62.9977, 41.8519, 19.6589



61.6725, 4.5813, 21.9028



32.6776, 1.0142, 2.8029



28.0986, 47.3178, 18.1426



6.2360, 9.8888, 4.0157

Inverse Universe

The Inverse Universe completely reimagines the original color for something new.



68.8019, -23.7145, -4.0597



90.2954, -35.3637, -7.1010



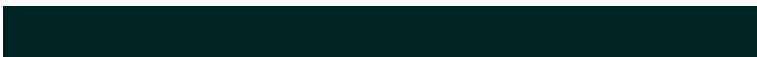
56.2909, -5.1445, -21.6764



34.6710, -4.4365, 0.9066



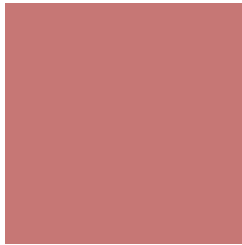
52.4435, -26.9206, -7.4360



11.4754, -5.9343, -1.5328

Previews

White Background



This preview shows how the HunterLab color 51.4624, 24.7375, 12.7545 looks on a white background.

Color Contrast Check

Large Text (above 18pt) WCAG AA ✓ Pass

Any Text WCAG AA × Fail

Large Text (above 18pt) WCAG AAA × Fail

Any Text WCAG AAA × Fail

Black Background



This preview shows how the HunterLab color 51.4624, 24.7375, 12.7545 looks on a black background.

Color Contrast Check

Large Text (above 18pt) WCAG AA ✓ Pass

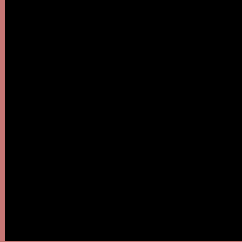
Any Text WCAG AA ✓ Pass

Large Text (above 18pt) WCAG AAA ✓ Pass

Any Text WCAG AAA × Fail

If you want to check with other color combinations, try the [Color Contrast Checker](#).

HunterLab 51.4624, 24.7375, 12.7545 Background



This preview shows how black text looks on a background with the HunterLab color 51.4624, 24.7375, 12.7545.



This preview shows how white text looks on a background with the HunterLab color 51.4624, 24.7375, 12.7545.

Color Blindness Simulation

Color vision deficiency is a very complex topic, and I could not describe the different causes any better than Wikipedia does, so if you want to learn more, you should check out their [article about color blindness](#).

Dichromacy



Original Color

51.4624, 24.7375, 12.7545

Protanopia

51.7796, -2.8675, 8.4720

Deuteranopia

51.6873, 3.3131, 13.6462



Tritanopia

51.5804, 26.6947, 9.5619

Trichromacy



Original Color

51.4624, 24.7375, 12.7545

Protanomaly

51.3199, 6.7151, 9.7104

Deuteranomaly

51.4132, 10.6474, 13.1624

Tritanomaly

51.5064, 26.3313, 10.6282

Monochromacy



Original Color

51.4624, 24.7375, 12.7545

Achromatopsia

52.0094, -2.7751, 2.8258

Achromatomaly

51.4053, 6.0841, 6.1883

CSS Examples

Text

The CSS property to change the color of the text to HunterLab 51.4624, 24.7375, 12.7545 is called "color". The color property can be set on classes, ids or directly on the HTML element.

This example shows how text in the color `rgb(198, 119, 117)` looks like.

```
.text, #text, p{  
    color:rgb(198, 119, 117)  
}
```

If you want to add a text shadow in that color use the text-shadow property, you can generate a text shadow directly with our [CSS Text Shadow Generator](#).

Here you see how black text with a 4 pixel rgb(198, 119, 117) colored shadow looks like.

```
.shadow{ text-shadow: 4px 4px 2px rgb(198, 119, 117) }
```

Border

The CSS property to change the border of an element to HunterLab 51.4624, 24.7375, 12.7545 is called "border". The border property can be set on classes, ids or directly on the HTML element.

This example shows the color as border, it can be applied via the CSS property "border" or "border-color".

```
.border, #border, table{ border:4px solid rgb(198, 119, 117) }
```


If only the border color should be changed use the property `border-color`.

```
.border{ border-color:rgb(198, 119, 117) }
```

If you want to add a box shadow in that color use:

Here you see how a box with a 4 pixel `rgb(198, 119, 117)` colored shadow looks like.

```
.boxshadow{ -moz-box-shadow:4px 4px 4px  
4px rgb(198, 119, 117); -webkit-box-  
shadow:4px 4px 4px 4px rgb(198, 119, 117);  
box-shadow:4px 4px 4px 4px rgb(198, 119,  
117) }
```

Background

The CSS property to change the background color of an element to HunterLab 51.4624, 24.7375, 12.7545 is called "background". The background property can be set on classes, ids or directly on the HTML element.

```
.background, #background, body{  
background: rgb(198, 119, 117) }
```

If only the background color should be changed can be used:

```
.background{ background-color: rgb(198,  
119, 117) }
```

This example shows the color as background, it is applied via the CSS property "background".

To optimize and compress your CSS code, you can use our [online CSS compressor and optimizer](#) based on csstidy. If you want to create a linear or radial gradient as background or border, check our [CSS Gradient Generator](#).

Hey! You found this booklet interesting? Support Converting Colors with the new Membership Option!

The pro membership hides all ads, plus gives you double the colors in the color bucket, and more awesome pro features!

[Learn more, Memberships starting at \\$2.50/m!](#)

**Follow me
on Twitter!**

@ConvertingColor