

Converting Colors

HunterLab(51.4014, 15.3345,
20.0951)

Have a look what the booklet for
HunterLab(51.4014, 15.3345,
20.0951) contains.

HunterLab(51.5081, 15.2906, 20.0862)	3
<i>Conversions</i>	4
<i>Details</i>	6
<i>Harmonies</i>	12
<i>Previews</i>	24
<i>Color Blindness Simulation</i>	28
<i>CSS Examples</i>	31

Color

**HunterLab(51.5081, 15.2906,
20.0862)**

Conversions

Conversions Part 1

Format	Color
Hex	BD7E5D
RGB	189, 126, 93
RGB Percent	74%, 49%, 36%
CMY	0.2588, 0.5059, 0.6353
CMYK	0.00, 0.33, 0.51, 0.26
HSL	21°, 42%, 55%
HSV	21°, 51%, 74%
XYZ	30.4229, 26.5308, 13.8735
YIQ	141.0750, 48.1410, 3.0930

Conversions

Conversions Part 2

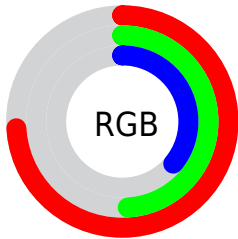
Format	Color
R_{YB}	189, 143, 93
Decimal	12418653
CIE Lab	58.54, 20.74, 27.87
CIE LCh	59, 34.743, 53.349
Yxy	26.5322, 0.4295, 0.3746
Android (android.graphics.Color)	4290608733 (0xFFBD7E5D)
YUV	141.0750, -23.7010, 42.0302
Hunter-Lab	51.5081, 15.2906, 20.0862

Details

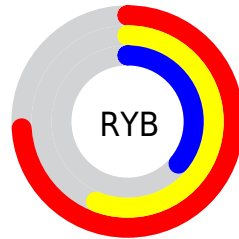
The HunterLab color **51.5081, 15.2906, 20.0862** is a dark color, and the websafe version is hex **CC9966**. A complement of this color would be **54.5682, -11.7945, -18.8917**, and the grayscale version is **51.7188, -2.7596, 2.8100**.

A 20% lighter version of the original color is **73.6276, 16.2874, 24.4067**, and **32.1756, 14.4282, 15.3161** is the 20% darker color. If you saturate the color by 10%, you get **48.2284, 19.9659, 22.0812**, and if you desaturate by 10%, it is **55.0277, 10.9173, 17.6134**.

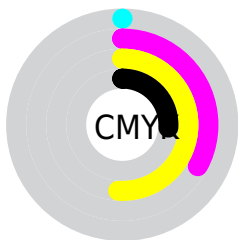
Distribution



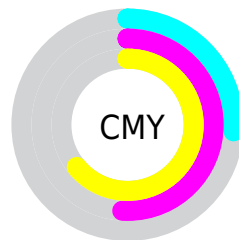
- Red (74%)
- Green (49%)
- Blue (36%)



- Red (74%)
- Yellow (56%)
- Blue (36%)



- Cyan (0%)
- Magenta (33%)
- Yellow (51%)
- Black (26%)



- Cyan (26%)
- Magenta (51%)
- Yellow (64%)

Brightness & Saturation Gradients

These gradients show how the HunterLab color 51.5081, 15.2906, 20.0862 changes by changing the brightness by 10 percent. The first figure shows a shift by +10% for each color and the second figure -10%.

Similar to the brightness gradients but the following saturation gradients show a change of the HunterLab color 51.5081, 15.2906, 20.0862 by changing the saturation by 10% instead.

■ 51.5081, 15.2906,
20.0862

■ 51.5081, 15.2906,
20.0862

168.9333, 16.8631,
38.2868

■ 41.4996, 14.7338,
17.7698

■ 73.5746, 16.1157,
24.4425

■ 32.2382, 14.0687,
15.3184

■ 85.5518, 16.4088,
26.5219

■ 23.7914, 13.2750,
12.6837

■ 98.1164, 16.6313,
28.5541

■ 16.2470, 12.3314,
10.3295

■ 111.2423, 16.7893,
30.5491

■ 9.7295, 11.2187,
6.8107

124.9062, 16.8876,
32.5144

0.0000, INF, NaN

0.0000, NaN, NaN

139.0880, 16.9303,

34.4560

0.0000, NaN, NaN

153.7691, 16.9211,
36.3788

0.0000, NaN, NaN

■ 51.5081, 15.2906,
20.0862

■ 51.5081, 15.2906,
20.0862

■ 48.2284, 19.9659,
22.0812

■ 55.0277, 10.9173,
17.6134

■ 45.2139, 24.9180,
23.5239

■ 58.7572, 6.8606,
14.7298

■ 42.4962, 30.0735,
24.3500

■ 62.6745, 3.1083,
11.4973

■ 40.1051, 35.3107,
24.5222

■ 66.7592, -0.3585,
7.9680

■ 38.2057, 40.0145,
24.2427

■ 70.9941, -3.5627,
4.1854

■ 75.3639, -6.5291,
0.1850

■ 79.8560, -9.2817,
-4.0042

■ 84.4593, -11.8429,
-8.3586

■ 88.8650, -15.9080,
-8.6418

Harmonies

Analogous

The Analogous color harmony consists of three colors that are next to each other on the color wheel.



51.5094, 25.9469, 12.3880



51.5081, 15.2906, 20.0862



51.5094, 0.5737, 23.0419

Triad

The Triadic color harmony groups three colors that are evenly spaced from another and form a triangle on the color wheel.



51.5094, 15.2880, 20.0869



51.5094, -27.9942, 5.8305



51.5094, 8.9733, -28.6103

Complementary

The Complementary color scheme is a pair of colors which are on the opposite of each other on the color wheel.



51.5081, 15.2906, 20.0862



54.5682, -11.7945, -18.8917

Split Complementary

Split-complementary colors differ from the complementary color scheme. The scheme consists of three colors, the original color and two neighbors of the complement color.



51.5094, -5.9937, -31.8201



51.5081, 15.2906, 20.0862



51.5094, -26.2810, -9.0709

Square

The Square scheme is like the rectangle color scheme, but the four colors are evenly spaced on the color wheel.



51.5094, 15.2880, 20.0869



51.5094, -23.5799, 16.4442



51.5094, -18.6055, -23.8649



51.5094, 22.0241, -16.0325

Rectangle

The Rectangle color scheme consists of four colors that form a rectangle on the color wheel.



51.5081, 15.2906, 20.0862



51.5094, -9.1347, 22.7469



51.5094, -18.6055, -23.8649



51.5094, 3.9592, -30.9434

Sweetspot

The Sweet Spot groups the original color and five complimentary colors.



51.5094, 15.2880, 20.0869



86.8858, 1.5382, 12.8090



45.9152, 40.1115, -12.1953



39.7581, 1.1685, 6.4000



97.7295, -5.2146, 5.3098



44.2712, -2.3622, 2.4053

Same Dimension

The Same Dimension uses a secret algorithm to generate beautiful new colors.



51.5094, 15.2880, 20.0869



64.0468, 27.4863, 29.8197



64.4176, -7.6950, 30.0272



31.7148, -0.3935, 3.5018



31.5447, 32.2564, 20.0024



7.1667, 4.0797, 4.4875

Inverse Universe

The Inverse Universe completely reimagines the original color for something new.



54.5682, -11.7945, -18.8917



68.8353, -15.7204, -32.1286



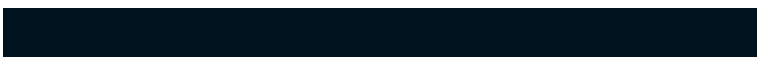
41.1568, 11.1101, -43.8004



32.0033, -2.8802, -0.1017



35.1021, -4.9583, -33.1710



7.7457, -2.1790, -4.9777

Previews

White Background



This preview shows how the HunterLab color 51.5081, 15.2906, 20.0862 looks on a white background.

Color Contrast Check

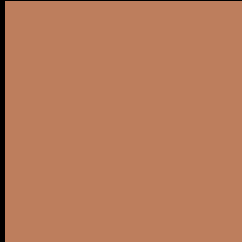
Large Text (above 18pt) WCAG AA ✓ Pass

Any Text WCAG AA × Fail

Large Text (above 18pt) WCAG AAA × Fail

Any Text WCAG AAA × Fail

Black Background



This preview shows how the HunterLab color 51.5081, 15.2906, 20.0862 looks on a black background.

Color Contrast Check

Large Text (above 18pt) WCAG AA ✓ Pass

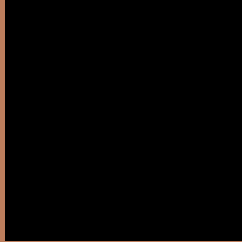
Any Text WCAG AA ✓ Pass

Large Text (above 18pt) WCAG AAA ✓ Pass

Any Text WCAG AAA × Fail

If you want to check with other color combinations, try the [Color Contrast Checker](#).

HunterLab 51.5081, 15.2906, 20.0862 Background



This preview shows how black text looks on a background with the HunterLab color 51.5081, 15.2906, 20.0862.



This preview shows how white text looks on a background with the HunterLab color 51.5081, 15.2906,

Color Blindness Simulation

Color vision deficiency is a very complex topic, and I could not describe the different causes any better than Wikipedia does, so if you want to learn more, you should check out their [article about color blindness](#).

Dichromacy



Original Color

51.5081, 15.2906, 20.0862

Protanopia

51.6004, -4.7670, 18.1490

Deuteranopia

51.6036, 3.5375, 20.4881



Tritanopia

51.4713, 22.9974, 7.7918

Trichromacy



Original Color

51.5081, 15.2906, 20.0862

Protanomaly

51.4497, 1.8290, 18.7024

Deuteranomaly

51.5968, 7.6599, 20.2929

Tritanomaly

51.5040, 20.0084, 12.7130

Monochromacy



Original Color

51.5081, 15.2906, 20.0862

Achromatopsia

51.6097, -2.7538, 2.8041

Achromatomaly

51.3154, 2.5270, 9.6324

CSS Examples

Text

The CSS property to change the color of the text to HunterLab 51.5081, 15.2906, 20.0862 is called "color". The color property can be set on classes, ids or directly on the HTML element.

This example shows how text in the color `rgb(189, 126, 93)` looks like.

```
.text, #text, p{  
    color:rgb(189, 126, 93)  
}
```

If you want to add a text shadow in that color use the text-shadow property, you can generate a text shadow directly with our [CSS Text Shadow Generator](#).

Here you see how black text with a 4 pixel rgb(189, 126, 93) colored shadow looks like.

```
.shadow{ text-shadow: 4px 4px 2px rgb(189, 126, 93) }
```

Border

The CSS property to change the border of an element to HunterLab 51.5081, 15.2906, 20.0862 is called "border". The border property can be set on classes, ids or directly on the HTML element.

This example shows the color as border, it can be applied via the CSS property "border" or "border-color".

```
.border, #border, table{ border:4px solid rgb(189, 126, 93) }
```


If only the border color should be changed use the property `border-color`.

```
.border{ border-color:rgb(189, 126, 93) }
```

If you want to add a box shadow in that color use:

Here you see how a box with a 4 pixel `rgb(189, 126, 93)` colored shadow looks like.

```
.boxshadow{ -moz-box-shadow:4px 4px 4px  
4px rgb(189, 126, 93); -webkit-box-  
shadow:4px 4px 4px 4px rgb(189, 126, 93);  
box-shadow:4px 4px 4px 4px rgb(189, 126,  
93) }
```

Background

The CSS property to change the background color of an element to HunterLab 51.5081, 15.2906, 20.0862 is called "background". The background property can be set on classes, ids or directly on the HTML element.

```
.background, #background, body{  
background: rgb(189, 126, 93) }
```

If only the background color should be changed can be used:

```
.background{ background-color: rgb(189,  
126, 93) }
```

This example shows the color as background, it is applied via the CSS property "background".

To optimize and compress your CSS code, you can use our [online CSS compressor and optimizer](#) based on csstidy. If you want to create a linear or radial gradient as background or border, check our [CSS Gradient Generator](#).

Hey! You found this booklet interesting? Support Converting Colors with the new Membership Option!

The pro membership hides all ads, plus gives you double the colors in the color bucket, and more awesome pro features!

[Learn more, Memberships starting at \\$2.50/m!](#)

**Follow me
on Twitter!**

@ConvertingColor