

Converting Colors

HunterLab(51.4351, 18.1436,
6.0131)

Have a look what the booklet for
HunterLab(51.4351, 18.1436,
6.0131) contains.

HunterLab(51.4351, 18.1436, 6.0131)	3
<i>Conversions</i>	4
<i>Details</i>	6
<i>Harmonies</i>	12
<i>Previews</i>	24
<i>Color Blindness Simulation</i>	28
<i>CSS Examples</i>	31

Color

**HunterLab(51.4351, 18.1436,
6.0131)**

Conversions

Conversions Part 1

Format	Color
Hex	B77D86
RGB	183, 125, 134
RGB Percent	72%, 49%, 53%
CMY	0.2824, 0.5098, 0.4745
CMYK	0.00, 0.32, 0.27, 0.28
HSL	351°, 29%, 60%
HSV	351°, 32%, 72%
XYZ	31.1651, 26.4557, 26.0181
YIQ	143.3680, 31.6790, 15.0950

Conversions

Conversions Part 2

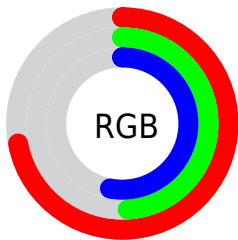
Format	Color
R _Y B	183, 125, 134
Decimal	12025222
CIE Lab	58.47, 23.80, 4.28
CIE LCh	58, 24.185, 10.203
Yxy	26.4569, 0.3726, 0.3163
Android (android.graphics.Color)	4290215302 (0xFFB77D86)
YUV	143.3680, -4.6184, 34.7573
Hunter-Lab	51.4351, 18.1436, 6.0131

Details

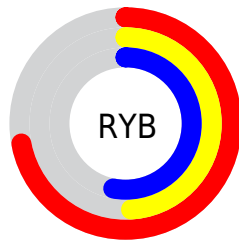
The HunterLab color **51.4351, 18.1436, 6.0131** is a dark color, and the websafe version is hex **CC9999**. A complement of this color would be **64.2522, -20.6747, 2.2764**, and the grayscale version is **52.5670, -2.8048, 2.8561**.

A 20% lighter version of the original color is **73.4533, 19.2689, 7.6504**, and **32.1794, 16.9568, 4.2908** is the 20% darker color. If you saturate the color by 10%, you get **46.7355, 25.3751, 7.2848**, and if you desaturate by 10%, it is **56.5584, 11.0373, 5.0340**.

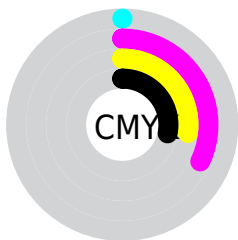
Distribution



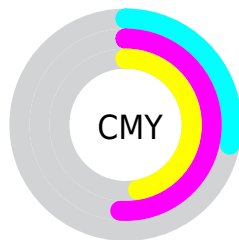
- Red (72%)
- Green (49%)
- Blue (53%)



- Red (72%)
- Yellow (49%)
- Blue (53%)



- Cyan (0%)
- Magenta (32%)
- Yellow (27%)
- Black (28%)



- Cyan (28%)
- Magenta (51%)
- Yellow (47%)

Brightness & Saturation Gradients

These gradients show how the HunterLab color 51.4351, 18.1436, 6.0131 changes by changing the brightness by 10 percent. The first figure shows a shift by +10% for each color and the second figure -10%.

Similar to the brightness gradients but the following saturation gradients show a change of the HunterLab color 51.4351, 18.1436, 6.0131 by changing the saturation by 10% instead.

■ 51.4351, 18.1436,
6.0131

■ 51.4351, 18.1436,
6.0131

168.8248, 20.8133,
14.0551

■ 41.4316, 17.4416,
5.2303

■ 73.4923, 19.2434,
7.6465

■ 32.1757, 16.6248,
4.4664

■ 85.4653, 19.6659,
8.4961

■ 23.7349, 15.6742,
3.7197

■ 98.0259, 20.0133,
9.3680

■ 16.1973, 14.5716,
2.9839

111.1478, 20.2920,
10.2621

■ 9.6876, 13.3110,
2.3672

124.8081, 20.5071,
11.1782

0.0000, INF, NaN

0.0000, NaN, NaN

138.9862, 20.6632,

12.1159

0.0000, NaN, NaN

153.6639, 20.7642,
13.0750

0.0000, NaN, NaN

■ 51.4351, 18.1436,
6.0131

■ 51.4351, 18.1436,
6.0131

■ 46.7355, 25.3751,
7.2848

■ 56.5584, 11.0373,
5.0340

■ 42.5373, 32.5810,
8.8673

■ 62.0344, 4.1311,
4.3101

■ 38.9345, 39.4693,
10.7492

■ 67.8103, -2.5606,
3.8051

■ 36.0219, 45.5948,
12.8598

■ 73.8428, -9.0474,
3.4847

■ 33.8756, 50.4099,
15.0514

■ 80.0978, -15.3509,
3.3191

■ 32.5215, 53.4455,
17.1117

■ 86.5479, -21.4960,
3.2837

■ 31.8638, 54.8366,
18.5046

■ 93.1711, -27.5076,
3.3580

■ 94.2376, -26.0019,
-1.9093

Harmonies

Analogous

The Analogous color harmony consists of three colors that are next to each other on the color wheel.



51.4363, 17.1593, -3.9694



51.4351, 18.1436, 6.0131



51.4363, 13.2018, 13.4991

Triad

The Triadic color harmony groups three colors that are evenly spaced from another and form a triangle on the color wheel.



51.4363, 18.1414, 6.0140



51.4363, -14.8708, 15.1683



51.4363, -9.2590, -18.1695

Complementary

The Complementary color scheme is a pair of colors which are on the opposite of each other on the color wheel.



51.4351, 18.1436, 6.0131



64.2522, -20.6747, 2.2764

Split Complementary

Split-complementary colors differ from the complementary color scheme. The scheme consists of three colors, the original color and two neighbors of the complement color.



51.4363, -16.9625, -10.8450



51.4351, 18.1436, 6.0131



51.4363, -20.0223, 8.7582

Square

The Square scheme is like the rectangle color scheme, but the four colors are evenly spaced on the color wheel.



51.4363, 18.1414, 6.0140



51.4363, -6.1950, 18.0553



51.4363, -20.7568, -0.6362



51.4363, 0.7937, -19.3029

Rectangle

The Rectangle color scheme consists of four colors that form a rectangle on the color wheel.



51.4351, 18.1436, 6.0131



51.4363, 7.4264, 16.5666



51.4363, -20.7568, -0.6362



51.4363, -12.1869, -16.2905

Sweetspot

The Sweet Spot groups the original color and five complimentary colors.



51.4363, 18.1414, 6.0140



84.1746, 4.1432, 5.6472



51.9708, 23.0427, -18.6814



39.0607, 2.5446, 2.7060



96.5975, -5.1542, 5.2483



43.2801, -2.3093, 2.3515

Same Dimension

The Same Dimension uses a secret algorithm to generate beautiful new colors.



51.4363, 18.1414, 6.0140



64.4063, 30.9844, 9.1845



56.2109, 7.2326, 14.2971



30.0572, 1.2038, 1.9793



26.6263, 45.8480, 15.2697



5.0707, 8.8717, 1.8189

Inverse Universe

The Inverse Universe completely reimagines the original color for something new.



51.4363, 18.1414, 6.0140



64.4063, 30.9844, 9.1845



58.4906, -10.1294, -9.5477



30.0572, 1.2038, 1.9793



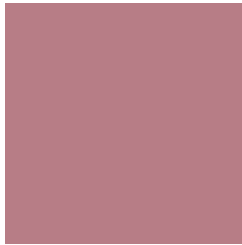
26.6263, 45.8480, 15.2697



5.0707, 8.8717, 1.8189

Previews

White Background



This preview shows how the HunterLab color 51.4351, 18.1436, 6.0131 looks on a white background.

Color Contrast Check

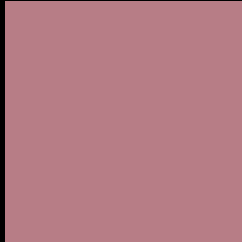
Large Text (above 18pt) WCAG AA ✓ Pass

Any Text WCAG AA × Fail

Large Text (above 18pt) WCAG AAA × Fail

Any Text WCAG AAA × Fail

Black Background



This preview shows how the HunterLab color 51.4351, 18.1436, 6.0131 looks on a black background.

Color Contrast Check

Large Text (above 18pt) WCAG AA ✓ Pass

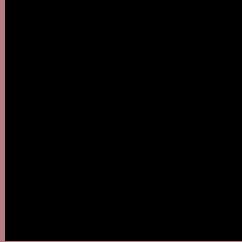
Any Text WCAG AA ✓ Pass

Large Text (above 18pt) WCAG AAA ✓ Pass

Any Text WCAG AAA × Fail

If you want to check with other color combinations, try the [Color Contrast Checker](#).

HunterLab 51.4351, 18.1436, 6.0131 Background



This preview shows how black text looks on a background with the HunterLab color 51.4351, 18.1436, 6.0131.



This preview shows how white text looks on a background with the HunterLab color 51.4351, 18.1436,

Color Blindness Simulation

Color vision deficiency is a very complex topic, and I could not describe the different causes any better than Wikipedia does, so if you want to learn more, you should check out their [article about color blindness](#).

Dichromacy



Original Color

51.4351, 18.1436, 6.0131

Protanopia

51.5548, -1.3646, 1.8584

Deuteranopia

51.5203, 3.6263, 6.6881



Tritanopia

51.4351, 18.1436, 6.0131

Trichromacy



Original Color

51.4351, 18.1436, 6.0131

Protanomaly

51.4689, 5.2961, 3.2265

Deuteranomaly

51.3921, 8.7793, 6.2208

Tritanomaly

51.4351, 18.1436, 6.0131

Monochromacy



Original Color

51.4351, 18.1436, 6.0131

Achromatopsia

52.4097, -2.7964, 2.8475

Achromatomaly

51.7406, 4.8036, 3.5353

CSS Examples

Text

The CSS property to change the color of the text to HunterLab 51.4351, 18.1436, 6.0131 is called "color". The color property can be set on classes, ids or directly on the HTML element.

This example shows how text in the color `rgb(183, 125, 134)` looks like.

```
.text, #text, p{  
    color:rgb(183, 125, 134)  
}
```

If you want to add a text shadow in that color use the text-shadow property, you can generate a text shadow directly with our [CSS Text Shadow Generator](#).

Here you see how black text with a 4 pixel rgb(183, 125, 134) colored shadow looks like.

```
.shadow{ text-shadow: 4px 4px 2px rgb(183, 125, 134) }
```

Border

The CSS property to change the border of an element to HunterLab 51.4351, 18.1436, 6.0131 is called "border". The border property can be set on classes, ids or directly on the HTML element.

This example shows the color as border, it can be applied via the CSS property "border" or "border-color".

```
.border, #border, table{ border:4px solid rgb(183, 125, 134) }
```


If only the border color should be changed use the property `border-color`.

```
.border{ border-color:rgb(183, 125, 134) }
```

If you want to add a box shadow in that color use:

Here you see how a box with a 4 pixel `rgb(183, 125, 134)` colored shadow looks like.

```
.boxshadow{ -moz-box-shadow:4px 4px 4px  
4px rgb(183, 125, 134); -webkit-box-  
shadow:4px 4px 4px 4px rgb(183, 125, 134);  
box-shadow:4px 4px 4px 4px rgb(183, 125,  
134) }
```

Background

The CSS property to change the background color of an element to HunterLab 51.4351, 18.1436, 6.0131 is called "background". The background property can be set on classes, ids or directly on the HTML element.

```
.background, #background, body{  
background: rgb(183, 125, 134) }
```

If only the background color should be changed can be used:

```
.background{ background-color: rgb(183,  
125, 134) }
```

This example shows the color as background, it is applied via the CSS property "background".

To optimize and compress your CSS code, you can use our [online CSS compressor and optimizer](#) based on csstidy. If you want to create a linear or radial gradient as background or border, check our [CSS Gradient Generator](#).

Hey! You found this booklet interesting? Support Converting Colors with the new Membership Option!

The pro membership hides all ads, plus gives you double the colors in the color bucket, and more awesome pro features!

[Learn more, Memberships starting at \\$2.50/m!](#)

**Follow me
on Twitter!**

@ConvertingColor