

Converting Colors

HunterLab(51.4605, 19.3354,
7.1324)

Have a look what the booklet for
HunterLab(51.4605, 19.3354,
7.1324) contains.

HunterLab(51.4714, 19.3527, 7.3208)	3
<i>Conversions</i>	4
<i>Details</i>	6
<i>Harmonies</i>	12
<i>Previews</i>	24
<i>Color Blindness Simulation</i>	28
<i>CSS Examples</i>	31

Color

**HunterLab(51.4714, 19.3527,
7.3208)**

Conversions

Conversions Part 1

Format	Color
Hex	BA7C83
RGB	186, 124, 131
RGB Percent	73%, 49%, 51%
CMY	0.2706, 0.5137, 0.4863
CMYK	0.00, 0.33, 0.30, 0.27
HSL	353°, 31%, 61%
HSV	353°, 33%, 73%
XYZ	31.5540, 26.4931, 24.9233
YIQ	143.3360, 34.7050, 15.3210

Conversions

Conversions Part 2

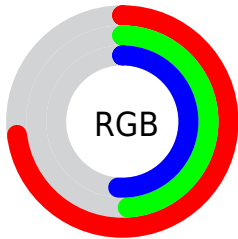
Format	Color
R_{YB}	186, 124, 131
Decimal	12221571
CIE _{Lab}	58.50, 25.08, 6.11
CIE _{LCh}	59, 25.813, 13.693
Yxy	26.4943, 0.3803, 0.3193
Android (android.graphics.Color)	4290411651 (0xFFBA7C83)
YUV	143.3360, -6.0816, 37.4163
Hunter-Lab	51.4714, 19.3527, 7.3208

Details

The HunterLab color **51.4714, 19.3527, 7.3208** is a dark color, and the websafe version is hex **996666**. A complement of this color would be **65.3132, -21.3523, 1.1551**, and the grayscale version is **52.5591, -2.8044, 2.8556**.

A 20% lighter version of the original color is **73.4572, 20.4954, 9.0213**, and **32.1435, 17.7835, 5.3937** is the 20% darker color. If you saturate the color by 10%, you get **46.7453, 26.6751, 8.8897**, and if you desaturate by 10%, it is **56.6462, 12.1638, 6.0094**.

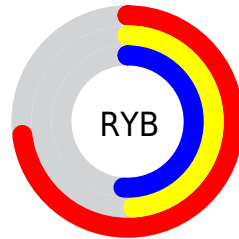
Distribution



Red (73%)

Green (49%)

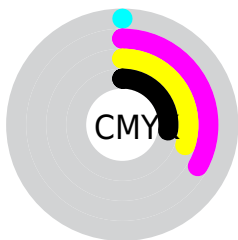
Blue (51%)



Red (73%)

Yellow (49%)

Blue (51%)

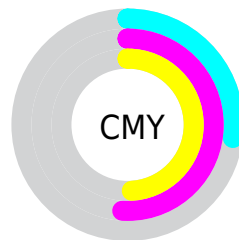


Cyan (0%)

Magenta (33%)

Yellow (30%)

Black (27%)



Cyan (27%)

Magenta (51%)

Yellow (49%)

Brightness & Saturation Gradients

These gradients show how the HunterLab color 51.4714, 19.3527, 7.3208 changes by changing the brightness by 10 percent. The first figure shows a shift by +10% for each color and the second figure -10%.

Similar to the brightness gradients but the following saturation gradients show a change of the HunterLab color 51.4714, 19.3527, 7.3208 by changing the saturation by 10% instead.

■ 51.4714, 19.3527,
7.3208

■ 51.4714, 19.3527,
7.3208

168.8787, 22.4705,
16.0880

■ 41.4654, 18.5918,
6.4313

■ 73.5332, 20.5637,
9.1454

■ 32.2068, 17.7143,
5.5509

■ 85.5083, 21.0390,
10.0822

■ 23.7630, 16.7015,
4.6743

■ 98.0709, 21.4374,
11.0368

■ 16.2220, 15.5372,
3.7899

111.1948, 21.7654,
12.0098

■ 9.7085, 14.2219,
3.1451

124.8569, 22.0285,
13.0013

0.0000, INF, NaN

0.0000, NaN, NaN

139.0368, 22.2311,

14.0115

0.0000, NaN, NaN

153.7162, 22.3773,
15.0404

0.0000, NaN, NaN

■ 51.4714, 19.3527,
7.3208

■ 51.4714, 19.3527,
7.3208

■ 46.7453, 26.6751,
8.8897

■ 56.6462, 12.1638,
6.0094

■ 42.5508, 33.9623,
10.7136

■ 62.1940, 5.1920,
4.9312

■ 38.9868, 40.8925,
12.7515

■ 68.0578, -1.5455,
4.0578

■ 36.1501, 46.9851,
14.8967

■ 74.1916, -8.0591,
3.3595

■ 34.1128, 51.6720,
16.9709

■ 80.5587, -14.3720,
2.8093

■ 32.8880, 54.5065,
18.7569

■ 87.1299, -20.5118,
2.3839

■ 32.3932, 55.6414,
19.6370

■ 93.8818, -26.5054,
2.0638

■ 94.4347, -25.2734,
-1.6509

Harmonies

Analogous

The Analogous color harmony consists of three colors that are next to each other on the color wheel.



51.4726, 19.0616, -3.1465



51.4714, 19.3527, 7.3208



51.4726, 13.3795, 14.8079

Triad

The Triadic color harmony groups three colors that are evenly spaced from another and form a triangle on the color wheel.



51.4726, 19.3504, 7.3217



51.4726, -16.5035, 15.2837



51.4726, -8.5298, -20.3714

Complementary

The Complementary color scheme is a pair of colors which are on the opposite of each other on the color wheel.



51.4714, 19.3527, 7.3208



65.3132, -21.3523, 1.1551

Split Complementary

Split-complementary colors differ from the complementary color scheme. The scheme consists of three colors, the original color and two neighbors of the complement color.



51.4726, -17.1080, -13.0463



51.4714, 19.3527, 7.3208



51.4726, -21.4415, 8.1153

Square

The Square scheme is like the rectangle color scheme, but the four colors are evenly spaced on the color wheel.



51.4726, 19.3504, 7.3217



51.4726, -7.6398, 18.7122



51.4726, -21.6531, -2.1693



51.4726, 2.3311, -20.7088

Rectangle

The Rectangle color scheme consists of four colors that form a rectangle on the color wheel.



51.4714, 19.3527, 7.3208



51.4726, 6.9202, 17.7188



51.4726, -21.6531, -2.1693



51.4726, -11.7536, -18.5851

Sweetspot

The Sweet Spot groups the original color and five complimentary colors.



51.4726, 19.3504, 7.3217



86.1887, 4.0849, 6.2389



52.4573, 25.9622, -19.7268



39.9292, 2.5235, 3.0100



97.7295, -5.2146, 5.3098



44.2712, -2.3622, 2.4053

Same Dimension

The Same Dimension uses a secret algorithm to generate beautiful new colors.



51.4726, 19.3504, 7.3217



64.5673, 33.2735, 11.3705



57.4474, 6.4845, 15.8303



30.0471, 1.1495, 2.1235



26.5807, 45.6791, 15.9444



5.0450, 8.7772, 2.1941

Inverse Universe

The Inverse Universe completely reimagines the original color for something new.



51.4726, 19.3504, 7.3217



64.5673, 33.2735, 11.3705



58.0984, -9.0782, -11.7662



30.0471, 1.1495, 2.1235



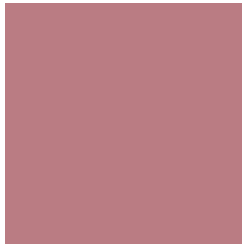
26.5807, 45.6791, 15.9444



5.0450, 8.7772, 2.1941

Previews

White Background



This preview shows how the HunterLab color 51.4714, 19.3527, 7.3208 looks on a white background.

Color Contrast Check

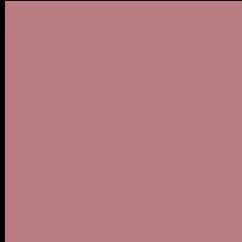
Large Text (above 18pt) WCAG AA ✓ Pass

Any Text WCAG AA × Fail

Large Text (above 18pt) WCAG AAA × Fail

Any Text WCAG AAA × Fail

Black Background



This preview shows how the HunterLab color 51.4714, 19.3527, 7.3208 looks on a black background.

Color Contrast Check

Large Text (above 18pt) WCAG AA ✓ Pass

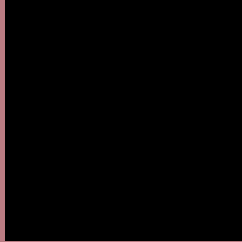
Any Text WCAG AA ✓ Pass

Large Text (above 18pt) WCAG AAA ✓ Pass

Any Text WCAG AAA × Fail

If you want to check with other color combinations, try the [Color Contrast Checker](#).

HunterLab 51.4714, 19.3527, 7.3208 Background



This preview shows how black text looks on a background with the HunterLab color 51.4714, 19.3527, 7.3208.



This preview shows how white text looks on a background with the HunterLab color 51.4714, 19.3527,

Color Blindness Simulation

Color vision deficiency is a very complex topic, and I could not describe the different causes any better than Wikipedia does, so if you want to learn more, you should check out their [article about color blindness](#).

Dichromacy



Original Color

51.4714, 19.3527, 7.3208

Protanopia

51.5547, -1.5388, 3.2073

Deuteranopia

51.5405, 3.5371, 7.9293



Tritanopia

51.5246, 19.6210, 6.5581

Trichromacy



Original Color

51.4714, 19.3527, 7.3208

Protanomaly

51.2126, 5.6657, 4.2564

Deuteranomaly

51.5260, 9.0557, 7.6072

Tritanomaly

51.4979, 19.4863, 6.9411

Monochromacy



Original Color

51.4714, 19.3527, 7.3208

Achromatopsia

52.4097, -2.7964, 2.8475

Achromatomaly

51.8105, 4.9799, 4.0603

CSS Examples

Text

The CSS property to change the color of the text to HunterLab 51.4714, 19.3527, 7.3208 is called "color". The color property can be set on classes, ids or directly on the HTML element.

This example shows how text in the color `rgb(186, 124, 131)` looks like.

```
.text, #text, p{  
    color:rgb(186, 124, 131)  
}
```

If you want to add a text shadow in that color use the text-shadow property, you can generate a text shadow directly with our [CSS Text Shadow Generator](#).

Here you see how black text with a 4 pixel rgb(186, 124, 131) colored shadow looks like.

```
.shadow{ text-shadow: 4px 4px 2px rgb(186, 124, 131) }
```

Border

The CSS property to change the border of an element to HunterLab 51.4714, 19.3527, 7.3208 is called "border". The border property can be set on classes, ids or directly on the HTML element.

This example shows the color as border, it can be applied via the CSS property "border" or "border-color".

```
.border, #border, table{ border:4px solid rgb(186, 124, 131) }
```


If only the border color should be changed use the property `border-color`.

```
.border{ border-color:rgb(186, 124, 131) }
```

If you want to add a box shadow in that color use:

Here you see how a box with a 4 pixel `rgb(186, 124, 131)` colored shadow looks like.

```
.boxshadow{ -moz-box-shadow:4px 4px 4px  
4px rgb(186, 124, 131); -webkit-box-  
shadow:4px 4px 4px 4px rgb(186, 124, 131);  
box-shadow:4px 4px 4px 4px rgb(186, 124,  
131) }
```

Background

The CSS property to change the background color of an element to HunterLab 51.4714, 19.3527, 7.3208 is called "background". The background property can be set on classes, ids or directly on the HTML element.

```
.background, #background, body{  
background: rgb(186, 124, 131) }
```

If only the background color should be changed can be used:

```
.background{ background-color: rgb(186,  
124, 131) }
```

This example shows the color as background, it is applied via the CSS property "background".

To optimize and compress your CSS code, you can use our [online CSS compressor and optimizer](#) based on csstidy. If you want to create a linear or radial gradient as background or border, check our [CSS Gradient Generator](#).

Hey! You found this booklet interesting? Support Converting Colors with the new Membership Option!

The pro membership hides all ads, plus gives you double the colors in the color bucket, and more awesome pro features!

[Learn more, Memberships starting at \\$2.50/m!](#)

**Follow me
on Twitter!**

@ConvertingColor