

Converting Colors

HunterLab(51.4638, 46.2870,
7.7357)

Have a look what the booklet for
HunterLab(51.4638, 46.2870,
7.7357) contains.

| | |
|--|----|
| HunterLab(51.5755, 46.0846, 7.9028) | 3 |
| <i>Conversions</i> | 4 |
| <i>Details</i> | 6 |
| <i>Harmonies</i> | 12 |
| <i>Previews</i> | 24 |
| <i>Color Blindness Simulation</i> | 28 |
| <i>CSS Examples</i> | 31 |

Color

**HunterLab(51.5755, 46.0846,
7.9028)**

Conversions

Conversions Part 1

| Format | Color |
|-------------|----------------------------|
| Hex | E06483 |
| RGB | 224, 100, 131 |
| RGB Percent | 88%, 39%, 51% |
| CMY | 0.1216, 0.6078, 0.4863 |
| CMYK | 0.00, 0.55, 0.42, 0.12 |
| HSL | 345°, 67%, 64% |
| HSV | 345°, 55%, 88% |
| XYZ | 39.3944, 26.6003, 24.5308 |
| YIQ | 140.6100, 63.9530, 35.9290 |

Conversions

Conversions Part 2

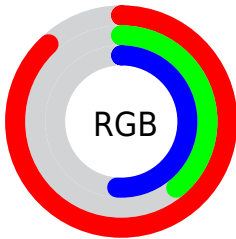
| Format | Color |
|-------------------------------------|-------------------------------|
| R _Y B | 224, 100, 131 |
| Decimal | 14705795 |
| CIE Lab | 58.60, 51.23, 6.93 |
| CIE LCh | 59, 51.694, 7.703 |
| Yxy | 26.6017, 0.4352, 0.2939 |
| Android (android.graphics.Color) | 4292895875 (0xFFE06483) |
| YUV | 140.6100, -4.7377, 73.1330 |
| Hunter-Lab | 51.5755, 46.0846, 7.9028 |

Details

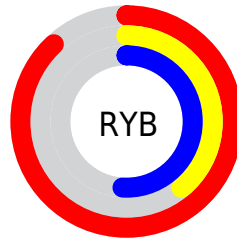
The HunterLab color **51.5755, 46.0846, 7.9028** is a light color, and the websafe version is hex **FF6699**. A complement of this color would be **77.3767, -39.5846, 8.3243**, and the grayscale version is **51.4556, -2.7455, 2.7957**.

A 20% lighter version of the original color is **69.3998, 37.0223, 4.6706**, and **32.3810, 42.4391, 6.0797** is the 20% darker color. If you saturate the color by 10%, you get **47.3918, 54.4864, 10.1654**, and if you desaturate by 10%, it is **56.5671, 36.9472, 6.2239**.

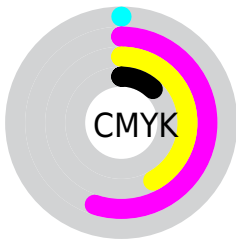
Distribution



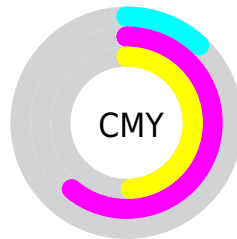
- Red (88%)
- Green (39%)
- Blue (51%)



- Red (88%)
- Yellow (39%)
- Blue (51%)



- Cyan (0%)
- Magenta (55%)
- Yellow (42%)
- Black (12%)



- Cyan (12%)
- Magenta (61%)
- Yellow (49%)

Brightness & Saturation Gradients

These gradients show how the HunterLab color 51.5755, 46.0846, 7.9028 changes by changing the brightness by 10 percent. The first figure shows a shift by +10% for each color and the second figure -10%.

Similar to the brightness gradients but the following saturation gradients show a change of the HunterLab color 51.5755, 46.0846, 7.9028 by changing the saturation by 10% instead.

51.5755, 46.0846,
7.9028

51.5755, 46.0846,
7.9028

169.0336, 57.6836,
17.0005

41.5624, 44.2947,
6.9648

73.6506, 49.3233,
9.8149

32.2959, 42.4051,
6.0311

85.6317, 50.7852,
10.7914

23.8436, 40.4440,
5.0951

98.2001, 52.1486,
11.7837

16.2929, 38.5134,
4.1426

111.3295, 53.4193,
12.7925

9.7683, 36.9634,
3.4833

124.9969, 54.6031,
13.8183

0.0000, INF, NaN

0.0000, INF, NaN

139.1819, 55.7053,

14.8615

0.0000, NaN, NaN

153.8663, 56.7306,
15.9222

0.0000, NaN, NaN

■ 51.5755, 46.0846,
7.9028

■ 51.5755, 46.0846,
7.9028

■ 47.3918, 54.4864,
10.1654

■ 56.5671, 36.9472,
6.2239

■ 44.1247, 61.5082,
12.9387

■ 62.2426, 27.5598,
5.1078

■ 41.8478, 66.4563,
16.0322

■ 68.4934, 18.2048,
4.4940

■ 40.5476, 68.9140,
19.1433

■ 75.2269, 9.0268,
4.3075

■ 40.1655, 69.4953,
20.4453

■ 82.3677, 0.0823,
4.4764

■ 89.8555, -8.6212,
4.9385

■ 97.0476, -16.1815,
4.9596

■ 97.2560, -15.0173,
1.9902

Harmonies

Analogous

The Analogous color harmony consists of three colors that are next to each other on the color wheel.



51.5769, 42.3862, -14.8638



51.5755, 46.0846, 7.9028



51.5769, 35.0607, 21.8188

Triad

The Triadic color harmony groups three colors that are evenly spaced from another and form a triangle on the color wheel.



51.5769, 46.0811, 7.9039



51.5769, -26.1094, 25.5404



51.5769, -17.8091, -49.8587

Complementary

The Complementary color scheme is a pair of colors which are on the opposite of each other on the color wheel.



51.5755, 46.0846, 7.9028



77.3767, -39.5846, 8.3243

Split Complementary

Split-complementary colors differ from the complementary color scheme. The scheme consists of three colors, the original color and two neighbors of the complement color.



51.5769, -32.0769, -28.2726



51.5755, 46.0846, 7.9028



51.5769, -36.2807, 15.8340

Square

The Square scheme is like the rectangle color scheme, but the four colors are evenly spaced on the color wheel.



51.5769, 46.0811, 7.9039



51.5769, -8.2905, 28.8492



51.5769, -38.2664, -2.8688



51.5769, 3.0248, -54.9218

Rectangle

The Rectangle color scheme consists of four colors that form a rectangle on the color wheel.



51.5755, 46.0846, 7.9028



51.5769, 21.7854, 26.5189



51.5769, -38.2664, -2.8688



51.5769, -23.4215, -43.9596

Sweetspot

The Sweet Spot groups the original color and five complimentary colors.



51.5769, 46.0811, 7.9039



85.7159, 12.3169, 4.9951



50.8284, 51.5412, -50.0383



38.9152, 6.6884, 2.3217

0.0000, NaN, NaN



46.2646, -2.4686, 2.5136

Same Dimension

The Same Dimension uses a secret algorithm to generate beautiful new colors.



51.5769, 46.0811, 7.9039



54.4121, 64.1172, 12.1079



57.4470, 27.3546, 23.4322



37.0897, 1.7342, 2.0406



30.6692, 53.1144, 15.2251



8.1621, 14.3063, 2.7274

Inverse Universe

The Inverse Universe completely reimagines the original color for something new.



51.5769, 46.0811, 7.9039



54.4121, 64.1172, 12.1079



67.9943, -19.8060, -19.9421



37.0897, 1.7342, 2.0406



30.6692, 53.1144, 15.2251



8.1621, 14.3063, 2.7274

Previews

White Background



This preview shows how the HunterLab color 51.5755, 46.0846, 7.9028 looks on a white background.

Color Contrast Check

Large Text (above 18pt) WCAG AA ✓ Pass

Any Text WCAG AA × Fail

Large Text (above 18pt) WCAG AAA × Fail

Any Text WCAG AAA × Fail

Black Background



This preview shows how the HunterLab color 51.5755, 46.0846, 7.9028 looks on a black background.

Color Contrast Check

Large Text (above 18pt) WCAG AA ✓ Pass

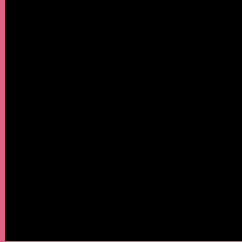
Any Text WCAG AA ✓ Pass

Large Text (above 18pt) WCAG AAA ✓ Pass

Any Text WCAG AAA × Fail

If you want to check with other color combinations, try the [Color Contrast Checker](#).

HunterLab 51.5755, 46.0846, 7.9028 Background



This preview shows how black text looks on a background with the HunterLab color 51.5755, 46.0846, 7.9028.



This preview shows how white text looks on a background with the HunterLab color 51.5755, 46.0846,

Color Blindness Simulation

Color vision deficiency is a very complex topic, and I could not describe the different causes any better than Wikipedia does, so if you want to learn more, you should check out their [article about color blindness](#).

Dichromacy



Original Color

51.5755, 46.0846, 7.9028

Protanopia

51.6379, -0.4004, -3.2902

Deuteranopia

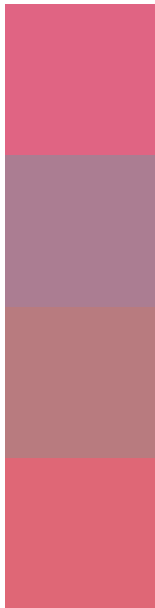
51.6392, 3.6661, 9.6074



Tritanopia

51.7072, 41.5600, 15.3449

Trichromacy



Original Color

51.5755, 46.0846, 7.9028

Protanomaly

50.3989, 15.6335, -0.6623

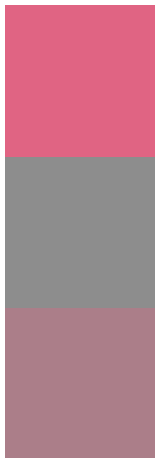
Deuteranomaly

50.8808, 18.5932, 8.2809

Tritanomaly

51.6686, 42.7647, 12.9189

Monochromacy



Original Color

51.5755, 46.0846, 7.9028

Achromatopsia

51.6097, -2.7538, 2.8041

Achromatomaly

50.3843, 13.7558, 3.4372

CSS Examples

Text

The CSS property to change the color of the text to HunterLab 51.5755, 46.0846, 7.9028 is called "color". The color property can be set on classes, ids or directly on the HTML element.

This example shows how text in the color `rgb(224, 100, 131)` looks like.

```
.text, #text, p{  
    color:rgb(224, 100, 131)  
}
```

If you want to add a text shadow in that color use the text-shadow property, you can generate a text shadow directly with our [CSS Text Shadow Generator](#).

Here you see how black text with a 4 pixel rgb(224, 100, 131) colored shadow looks like.

```
.shadow{ text-shadow: 4px 4px 2px rgb(224, 100, 131) }
```

Border

The CSS property to change the border of an element to HunterLab 51.5755, 46.0846, 7.9028 is called "border". The border property can be set on classes, ids or directly on the HTML element.

This example shows the color as border, it can be applied via the CSS property "border" or "border-color".

```
.border, #border, table{ border:4px solid rgb(224, 100, 131) }
```


If only the border color should be changed use the property `border-color`.

```
.border{ border-color:rgb(224, 100, 131) }
```

If you want to add a box shadow in that color use:

Here you see how a box with a 4 pixel `rgb(224, 100, 131)` colored shadow looks like.

```
.boxshadow{ -moz-box-shadow:4px 4px 4px  
4px rgb(224, 100, 131); -webkit-box-  
shadow:4px 4px 4px 4px rgb(224, 100, 131);  
box-shadow:4px 4px 4px 4px rgb(224, 100,  
131) }
```

Background

The CSS property to change the background color of an element to HunterLab 51.5755, 46.0846, 7.9028 is called "background". The background property can be set on classes, ids or directly on the HTML element.

```
.background, #background, body{  
background: rgb(224, 100, 131) }
```

If only the background color should be changed can be used:

```
.background{ background-color: rgb(224,  
100, 131) }
```

This example shows the color as background, it is applied via the CSS property "background".

To optimize and compress your CSS code, you can use our [online CSS compressor and optimizer](#) based on csstidy. If you want to create a linear or radial gradient as background or border, check our [CSS Gradient Generator](#).

Hey! You found this booklet interesting? Support Converting Colors with the new Membership Option!

The pro membership hides all ads, plus gives you double the colors in the color bucket, and more awesome pro features!

[Learn more, Memberships starting at \\$2.50/m!](#)

**Follow me
on Twitter!**

@ConvertingColor