

Converting Colors

HunterLab(51.4651, 11.8349,
15.5753)

Have a look what the booklet for
HunterLab(51.4651, 11.8349,
15.5753) contains.

HunterLab(51.4651, 11.8349, 15.5753)	3
<i>Conversions</i>	4
<i>Details</i>	6
<i>Harmonies</i>	12
<i>Previews</i>	24
<i>Color Blindness Simulation</i>	28
<i>CSS Examples</i>	31

Color

**HunterLab(51.4651, 11.8349,
15.5753)**

Conversions

Conversions Part 1

Format	Color
Hex	B4816C
RGB	180, 129, 108
RGB Percent	71%, 51%, 42%
CMY	0.2941, 0.4941, 0.5765
CMYK	0.00, 0.28, 0.40, 0.29
HSL	18°, 32%, 56%
HSV	18°, 40%, 71%
XYZ	29.3795, 26.4866, 17.7513
YIQ	141.8550, 37.1370, 4.2810

Conversions

Conversions Part 2

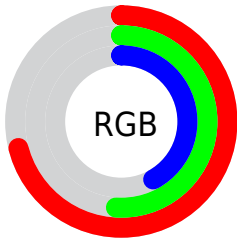
Format	Color
R_{YB}	180, 138, 108
Decimal	11829612
CIE _{Lab}	58.50, 16.96, 19.18
CIE _{LCh}	58, 25.608, 48.517
Yxy	26.4878, 0.3991, 0.3598
Android (android.graphics.Color)	4290019692 (0xFFB4816C)
YUV	141.8550, -16.6905, 33.4532
Hunter-Lab	51.4651, 11.8349, 15.5753

Details

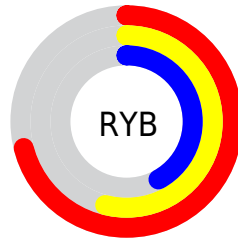
The HunterLab color **51.4651, 11.8349, 15.5753** is a dark color, and the websafe version is hex **996666**. A complement of this color would be **55.9272, -12.2719, -11.5292**, and the grayscale version is **52.0066, -2.7749, 2.8256**.

A 20% lighter version of the original color is **73.4837, 12.2876, 18.6616**, and **32.0596, 11.0931, 12.0432** is the 20% darker color. If you saturate the color by 10%, you get **47.9493, 16.3883, 17.8721**, and if you desaturate by 10%, it is **55.2110, 7.5652, 12.9558**.

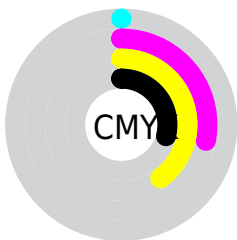
Distribution



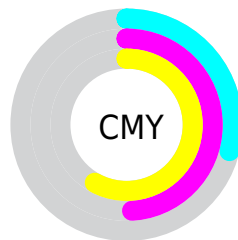
- Red (71%)
- Green (51%)
- Blue (42%)



- Red (71%)
- Yellow (54%)
- Blue (42%)



- Cyan (0%)
- Magenta (28%)
- Yellow (40%)
- Black (29%)



- Cyan (29%)
- Magenta (49%)
- Yellow (58%)

Brightness & Saturation Gradients

These gradients show how the HunterLab color 51.4651, 11.8349, 15.5753 changes by changing the brightness by 10 percent. The first figure shows a shift by +10% for each color and the second figure -10%.

Similar to the brightness gradients but the following saturation gradients show a change of the HunterLab color 51.4651, 11.8349, 15.5753 by changing the saturation by 10% instead.

■ 51.4651, 11.8349,
15.5753

■ 51.4651, 11.8349,
15.5753

168.8694, 12.0386,
29.8517

■ 41.4596, 11.4626,
13.8567

■ 73.5261, 12.3158,
18.8726

■ 32.2014, 10.9906,
12.0632

■ 85.5008, 12.4470,
20.4753

■ 23.7581, 10.3992,
10.1617

■ 98.0631, 12.5137,
22.0588

■ 16.2177, 9.6652,
8.1045

■ 111.1866, 12.5212,
23.6290

■ 9.7048, 8.7597,
6.7934

124.8484, 12.4740,
25.1902

0.0000, INF, NaN

0.0000, NaN, NaN

139.0280, 12.3758,

26.7460

0.0000, NaN, NaN

153.7072, 12.2297,
28.2991

0.0000, NaN, NaN

■ 51.4651, 11.8349,
15.5753

■ 51.4651, 11.8349,
15.5753

■ 47.9493, 16.3883,
17.8721

■ 55.2110, 7.5652,
12.9558

■ 44.6910, 21.2156,
19.7759

■ 59.1562, 3.5816,
10.0687

■ 41.7259, 26.2646,
21.2118

■ 63.2786, -0.1344,
6.9613

■ 39.0906, 31.4380,
22.1061

■ 67.5585, -3.6049,
3.6704

■ 36.8205, 36.5779,
22.4074

■ 71.9791, -6.8539,
0.2250

■ 34.9359, 41.4241,
22.2525

■ 76.5264, -9.9052,
-3.3520

■ 34.9358, 41.4244,
22.2525

■ 81.1882, -12.7811,
-7.0428

■ 85.9544, -15.5019,
-10.8333

■ 90.2617, -21.2148,
-6.8973

Harmonies

Analogous

The Analogous color harmony consists of three colors that are next to each other on the color wheel.



51.4663, 18.5956, 8.7215



51.4651, 11.8349, 15.5753



51.4663, 1.4762, 18.7189

Triad

The Triadic color harmony groups three colors that are evenly spaced from another and form a triangle on the color wheel.



51.4663, 11.8326, 15.5761



51.4663, -21.6628, 6.6026



51.4663, 4.0551, -19.8290

Complementary

The Complementary color scheme is a pair of colors which are on the opposite of each other on the color wheel.



51.4651, 11.8349, 15.5753



55.9272, -12.2719, -11.5292

Split Complementary

Split-complementary colors differ from the complementary color scheme. The scheme consists of three colors, the original color and two neighbors of the complement color.



51.4663, -6.8419, -20.7260



51.4651, 11.8349, 15.5753



51.4663, -21.0975, -3.9179

Square

The Square scheme is like the rectangle color scheme, but the four colors are evenly spaced on the color wheel.



51.4663, 11.8326, 15.5761



51.4663, -17.4826, 14.3030



51.4663, -15.8684, -14.4204



51.4663, 13.8548, -12.1768

Rectangle

The Rectangle color scheme consists of four colors that form a rectangle on the color wheel.



51.4651, 11.8349, 15.5753



51.4663, -5.8065, 18.8343



51.4663, -15.8684, -14.4204



51.4663, 0.3818, -20.9816

Sweetspot

The Sweet Spot groups the original color and five complimentary colors.



51.4663, 11.8326, 15.5761



83.9645, 0.8933, 10.3196



47.9090, 29.7790, -10.8890



38.7038, 0.7072, 5.0489



95.4677, -5.0939, 5.1869



42.2927, -2.2566, 2.2978

Same Dimension

The Same Dimension uses a secret algorithm to generate beautiful new colors.



51.4663, 11.8326, 15.5761



65.1071, 21.3253, 23.7271



61.2213, -5.4496, 23.8888



29.8259, -0.1780, 3.1632



29.3620, 34.0996, 18.6897



6.1202, 3.6999, 3.8360

Inverse Universe

The Inverse Universe completely reimagines the original color for something new.



55.9272, -12.2719, -11.5292



72.2743, -17.7504, -20.0044



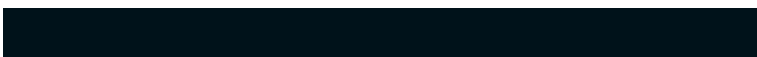
45.6059, 4.6548, -27.9526



30.3388, -2.9113, 0.0657



36.1973, -8.3561, -27.2050



7.1201, -2.4771, -3.5521

Previews

White Background



This preview shows how the HunterLab color 51.4651, 11.8349, 15.5753 looks on a white background.

Color Contrast Check

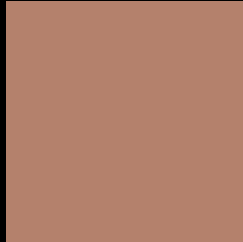
Large Text (above 18pt) WCAG AA ✓ Pass

Any Text WCAG AA × Fail

Large Text (above 18pt) WCAG AAA × Fail

Any Text WCAG AAA × Fail

Black Background



This preview shows how the HunterLab color 51.4651, 11.8349, 15.5753 looks on a black background.

Color Contrast Check

Large Text (above 18pt) WCAG AA ✓ Pass

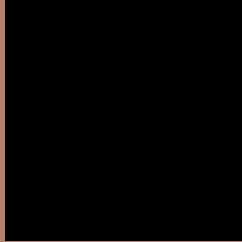
Any Text WCAG AA ✓ Pass

Large Text (above 18pt) WCAG AAA ✓ Pass

Any Text WCAG AAA × Fail

If you want to check with other color combinations, try the [Color Contrast Checker](#).

HunterLab 51.4651, 11.8349, 15.5753 Background



This preview shows how black text looks on a background with the HunterLab color 51.4651, 11.8349, 15.5753.



This preview shows how white text looks on a background with the HunterLab color 51.4651, 11.8349,

15.5753.

Color Blindness Simulation

Color vision deficiency is a very complex topic, and I could not describe the different causes any better than Wikipedia does, so if you want to learn more, you should check out their [article about color blindness](#).

Dichromacy



Original Color

51.4651, 11.8349, 15.5753

Protanopia

51.6972, -3.8630, 13.8707

Deuteranopia

51.4747, 3.6992, 15.7614



Tritanopia

51.4624, 18.2818, 5.6228

Trichromacy



Original Color

51.4651, 11.8349, 15.5753

Protanomaly

51.5908, 1.4485, 14.5321

Deuteranomaly

51.4728, 6.4534, 15.8079

Tritanomaly

51.3298, 16.0768, 9.4997

Monochromacy



Original Color

51.4651, 11.8349, 15.5753

Achromatopsia

52.0094, -2.7751, 2.8258

Achromatomaly

51.5470, 2.1999, 7.5101

CSS Examples

Text

The CSS property to change the color of the text to HunterLab 51.4651, 11.8349, 15.5753 is called "color". The color property can be set on classes, ids or directly on the HTML element.

This example shows how text in the color `rgb(180, 129, 108)` looks like.

```
.text, #text, p{  
    color:rgb(180, 129, 108)  
}
```

If you want to add a text shadow in that color use the text-shadow property, you can generate a text shadow directly with our [CSS Text Shadow Generator](#).

Here you see how black text with a 4 pixel rgb(180, 129, 108) colored shadow looks like.

```
.shadow{ text-shadow: 4px 4px 2px rgb(180, 129, 108) }
```

Border

The CSS property to change the border of an element to HunterLab 51.4651, 11.8349, 15.5753 is called "border". The border property can be set on classes, ids or directly on the HTML element.

This example shows the color as border, it can be applied via the CSS property "border" or "border-color".

```
.border, #border, table{ border:4px solid rgb(180, 129, 108) }
```


If only the border color should be changed use the property `border-color`.

```
.border{ border-color:rgb(180, 129, 108) }
```

If you want to add a box shadow in that color use:

Here you see how a box with a 4 pixel `rgb(180, 129, 108)` colored shadow looks like.

```
.boxshadow{ -moz-box-shadow:4px 4px 4px  
4px rgb(180, 129, 108); -webkit-box-  
shadow:4px 4px 4px 4px rgb(180, 129, 108);  
box-shadow:4px 4px 4px 4px rgb(180, 129,  
108) }
```

Background

The CSS property to change the background color of an element to HunterLab 51.4651, 11.8349, 15.5753 is called "background". The background property can be set on classes, ids or directly on the HTML element.

```
.background, #background, body{  
background: rgb(180, 129, 108) }
```

If only the background color should be changed can be used:

```
.background{ background-color: rgb(180,  
129, 108) }
```

This example shows the color as background, it is applied via the CSS property "background".

To optimize and compress your CSS code, you can use our [online CSS compressor and optimizer](#) based on csstidy. If you want to create a linear or radial gradient as background or border, check our [CSS Gradient Generator](#).

Hey! You found this booklet interesting? Support Converting Colors with the new Membership Option!

The pro membership hides all ads, plus gives you double the colors in the color bucket, and more awesome pro features!

[Learn more, Memberships starting at \\$2.50/m!](#)

**Follow me
on Twitter!**

@ConvertingColor