

Converting Colors

HunterLab(51.4669, 53.7590,
2.4367)

Have a look what the booklet for
HunterLab(51.4669, 53.7590,
2.4367) contains.

HunterLab(51.4693, 53.8345, 2.2628)	3
<i>Conversions</i>	4
<i>Details</i>	6
<i>Harmonies</i>	12
<i>Previews</i>	24
<i>Color Blindness Simulation</i>	28
<i>CSS Examples</i>	31

Color

**HunterLab(51.4693, 53.8345,
2.2628)**

Conversions

Conversions Part 1

Format	Color
Hex	E65C90
RGB	230, 92, 144
RGB Percent	90%, 36%, 56%
CMY	0.0980, 0.6392, 0.4353
CMYK	0.00, 0.60, 0.37, 0.10
HSL	337°, 73%, 63%
HSV	337°, 60%, 90%
XYZ	41.4943, 26.4909, 29.3118
YIQ	139.1900, 65.5560, 45.4280

Conversions

Conversions Part 2

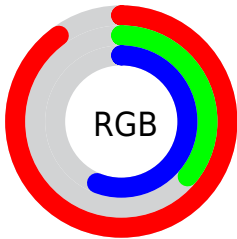
Format	Color
R _Y B	230, 92, 144
Decimal	15096976
CIE Lab	58.50, 58.18, -0.69
CIE LCh	59, 58.183, 359.321
Yxy	26.4923, 0.4265, 0.2723
Android (android.graphics.Color)	4293287056 (0xFFE65C90)
YUV	139.1900, 2.3713, 79.6404
Hunter-Lab	51.4693, 53.8345, 2.2628

Details

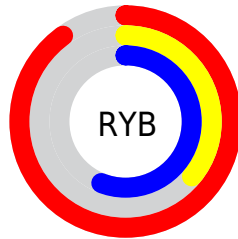
The HunterLab color **51.4693, 53.8345, 2.2628** is a light color, and the websafe version is hex **FF6699**. The color can be described as light muted rose. A complement of this color would be **78.7934, -45.5775, 16.0575**, and the grayscale version is **50.8614, -2.7138, 2.7634**.

A 20% lighter version of the original color is **68.2034, 42.9688, -3.6651**, and **32.1468, 49.7317, 1.1483** is the 20% darker color. If you saturate the color by 10%, you get **47.6266, 61.9544, 4.2868**, and if you desaturate by 10%, it is **56.1840, 44.5350, 1.1044**.

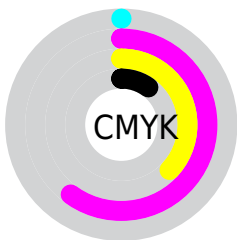
Distribution



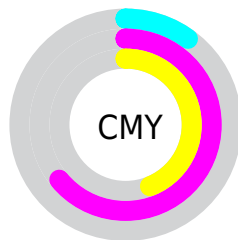
- Red (90%)
- Green (36%)
- Blue (56%)



- Red (90%)
- Yellow (36%)
- Blue (56%)



- Cyan (0%)
- Magenta (60%)
- Yellow (37%)
- Black (10%)



- Cyan (10%)
- Magenta (64%)
- Yellow (44%)

Brightness & Saturation Gradients

These gradients show how the HunterLab color 51.4693, 53.8345, 2.2628 changes by changing the brightness by 10 percent. The first figure shows a shift by +10% for each color and the second figure -10%.

Similar to the brightness gradients but the following saturation gradients show a change of the HunterLab color 51.4693, 53.8345, 2.2628 by changing the saturation by 10% instead.

51.4693, 53.8345,
2.2628

51.4693, 53.8345,
2.2628

168.8758, 67.4510,
8.3959

41.4636, 51.8332,
1.7563

73.5310, 57.5252,
3.3977

32.2051, 49.7577,
1.2923

85.5059, 59.2174,
4.0186

23.7615, 47.6632,
0.8764

98.0684, 60.8101,
4.6729

16.2206, 45.7155,
0.5148

111.1922, 62.3082,
5.3590

9.7073, 44.4472,
0.2167

124.8542, 63.7166,
6.0755

0.0000, INF, NaN

0.0000, INF, NaN

139.0340, 65.0402,

6.8212

0.0000, NaN, NaN

153.7134, 66.2836,
7.5950

0.0000, NaN, NaN

■ 51.4693, 53.8345,
2.2628

■ 51.4693, 53.8345,
2.2628

■ 47.6266, 61.9544,
4.2868

■ 56.1840, 44.5350,
1.1044

■ 44.7471, 68.1879,
7.1425

■ 61.6494, 34.6644,
0.7343

■ 42.8668, 71.9266,
10.6452

■ 67.7521, 24.6227,
1.0364

■ 41.8399, 73.2826,
14.3887

■ 74.3910, 14.6428,
1.8888

■ 41.8396, 73.2830,
14.3899

■ 81.4821, 4.8381,
3.1838

■ 88.9575, -4.7497,
4.8337

■ 96.7630, -14.1183,
6.7696

■ 97.7563, -13.2312,
2.6250

Harmonies

Analogous

The Analogous color harmony consists of three colors that are next to each other on the color wheel.



51.4707, 44.7647, -25.9704



51.4693, 53.8345, 2.2628



51.4707, 45.5170, 20.3712

Triad

The Triadic color harmony groups three colors that are evenly spaced from another and form a triangle on the color wheel.



51.4707, 53.8309, 2.2641



51.4707, -23.9919, 28.6687



51.4707, -24.7971, -53.1238

Complementary

The Complementary color scheme is a pair of colors which are on the opposite of each other on the color wheel.



51.4693, 53.8345, 2.2628



78.7934, -45.5775, 16.0575

Split Complementary

Split-complementary colors differ from the complementary color scheme. The scheme consists of three colors, the original color and two neighbors of the complement color.



51.4707, -37.9401, -24.5773



51.4693, 53.8345, 2.2628



51.4707, -37.5406, 20.9253

Square

The Square scheme is like the rectangle color scheme, but the four colors are evenly spaced on the color wheel.



51.4707, 53.8309, 2.2641



51.4707, -2.1858, 30.5890



51.4707, -42.1316, 3.3335



51.4707, -3.3100, -65.8843

Rectangle

The Rectangle color scheme consists of four colors that form a rectangle on the color wheel.



51.4693, 53.8345, 2.2628



51.4707, 31.9871, 26.6284



51.4707, -42.1316, 3.3335



51.4707, -30.1777, -44.5507

Sweetspot

The Sweet Spot groups the original color and five complimentary colors.



51.4707, 53.8309, 2.2641



85.1015, 14.3553, 2.3642



47.6739, 52.3560, -62.8106



38.3222, 8.1476, 0.9251

0.0000, NaN, NaN



46.2646, -2.4686, 2.5136

Same Dimension

The Same Dimension uses a secret algorithm to generate beautiful new colors.



51.4707, 53.8309, 2.2641



52.6574, 71.5618, 5.5122



53.2386, 40.7412, 22.2405



38.0229, 2.0026, 1.5162



31.5160, 55.2676, 10.3219



8.6693, 15.3973, 1.3316

Inverse Universe

The Inverse Universe completely reimagines the original color for something new.



51.4707, 53.8309, 2.2641



52.6574, 71.5618, 5.5122



74.8544, -29.1267, -13.6816



38.0229, 2.0026, 1.5162



31.5160, 55.2676, 10.3219



8.6693, 15.3973, 1.3316

Previews

White Background



This preview shows how the HunterLab color 51.4693, 53.8345, 2.2628 looks on a white background.

Color Contrast Check

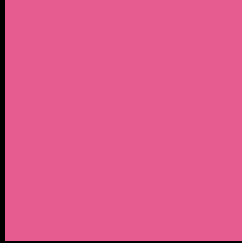
Large Text (above 18pt) WCAG AA ✓ Pass

Any Text WCAG AA × Fail

Large Text (above 18pt) WCAG AAA × Fail

Any Text WCAG AAA × Fail

Black Background



This preview shows how the HunterLab color 51.4693, 53.8345, 2.2628 looks on a black background.

Color Contrast Check

Large Text (above 18pt) WCAG AA ✓ Pass

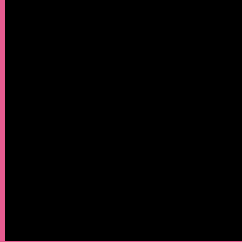
Any Text WCAG AA ✓ Pass

Large Text (above 18pt) WCAG AAA ✓ Pass

Any Text WCAG AAA × Fail

If you want to check with other color combinations, try the [Color Contrast Checker](#).

HunterLab 51.4693, 53.8345, 2.2628 Background



This preview shows how black text looks on a background with the HunterLab color 51.4693, 53.8345, 2.2628.



This preview shows how white text looks on a background with the HunterLab color 51.4693, 53.8345,

Color Blindness Simulation

Color vision deficiency is a very complex topic, and I could not describe the different causes any better than Wikipedia does, so if you want to learn more, you should check out their [article about color blindness](#).

Dichromacy



Original Color

51.4693, 53.8345, 2.2628

Protanopia

51.7675, 1.4402, -13.9393

Deuteranopia

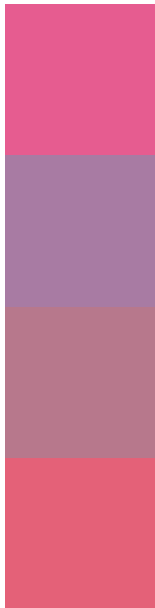
51.4610, 3.7000, 4.5074



Tritanopia

51.4644, 44.6411, 16.7845

Trichromacy



Original Color

51.4693, 53.8345, 2.2628

Protanomaly

50.1349, 18.5141, -9.7608

Deuteranomaly

50.3921, 21.5465, 2.2367

Tritanomaly

51.3804, 47.8659, 11.9936

Monochromacy



Original Color

51.4693, 53.8345, 2.2628

Achromatopsia

50.8117, -2.7112, 2.7607

Achromatomaly

49.6113, 16.7317, 0.7477

CSS Examples

Text

The CSS property to change the color of the text to HunterLab 51.4693, 53.8345, 2.2628 is called "color". The color property can be set on classes, ids or directly on the HTML element.

This example shows how text in the color `rgb(230, 92, 144)` looks like.

```
.text, #text, p{  
    color:rgb(230, 92, 144)  
}
```

If you want to add a text shadow in that color use the text-shadow property, you can generate a text shadow directly with our [CSS Text Shadow Generator](#).

Here you see how black text with a 4 pixel rgb(230, 92, 144) colored shadow looks like.

```
.shadow{ text-shadow: 4px 4px 2px rgb(230, 92, 144) }
```

Border

The CSS property to change the border of an element to HunterLab 51.4693, 53.8345, 2.2628 is called "border". The border property can be set on classes, ids or directly on the HTML element.

This example shows the color as border, it can be applied via the CSS property "border" or "border-color".

```
.border, #border, table{ border:4px solid rgb(230, 92, 144) }
```


If only the border color should be changed use the property `border-color`.

```
.border{ border-color:rgb(230, 92, 144) }
```

If you want to add a box shadow in that color use:

Here you see how a box with a 4 pixel `rgb(230, 92, 144)` colored shadow looks like.

```
.boxshadow{ -moz-box-shadow:4px 4px 4px  
4px rgb(230, 92, 144); -webkit-box-  
shadow:4px 4px 4px 4px rgb(230, 92, 144);  
box-shadow:4px 4px 4px 4px rgb(230, 92,  
144) }
```

Background

The CSS property to change the background color of an element to HunterLab 51.4693, 53.8345, 2.2628 is called "background". The background property can be set on classes, ids or directly on the HTML element.

```
.background, #background, body{  
background: rgb(230, 92, 144) }
```

If only the background color should be changed can be used:

```
.background{ background-color: rgb(230, 92,  
144) }
```

This example shows the color as background, it is applied via the CSS property "background".

To optimize and compress your CSS code, you can use our [online CSS compressor and optimizer](#) based on csstidy. If you want to create a linear or radial gradient as background or border, check our [CSS Gradient Generator](#).

Hey! You found this booklet interesting? Support Converting Colors with the new Membership Option!

The pro membership hides all ads, plus gives you double the colors in the color bucket, and more awesome pro features!

[Learn more, Memberships starting at \\$2.50/m!](#)

**Follow me
on Twitter!**

@ConvertingColor