

Converting Colors

HunterLab(51.4824, 9.0894,
23.4553)

Have a look what the booklet for
HunterLab(51.4824, 9.0894,
23.4553) contains.

HunterLab(51.4537, 9.4693, 23.3476)	3
<i>Conversions</i>	4
<i>Details</i>	6
<i>Harmonies</i>	12
<i>Previews</i>	24
<i>Color Blindness Simulation</i>	28
<i>CSS Examples</i>	31

Color

**HunterLab(51.4537, 9.4693,
23.3476)**

Conversions

Conversions Part 1

Format	Color
Hex	B6824F
RGB	182, 130, 79
RGB Percent	71%, 51%, 31%
CMY	0.2863, 0.4902, 0.6902
CMYK	0.00, 0.29, 0.57, 0.29
HSL	30°, 41%, 51%
HSV	30°, 57%, 71%
XYZ	28.6853, 26.4748, 10.9954
YIQ	139.7340, 47.3630, -4.8370

Conversions

Conversions Part 2

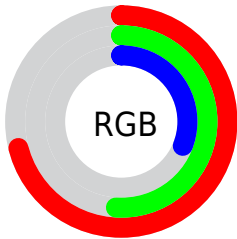
Format	Color
R_{YB}	182, 180, 79
Decimal	11960911
CIE _{Lab}	58.49, 14.33, 35.29
CIE _{LCh}	58, 38.085, 67.904
Yxy	26.4761, 0.4336, 0.4002
Android (android.graphics.Color)	4290150991 (0xFFB6824F)
YUV	139.7340, -29.9419, 37.0673
Hunter-Lab	51.4537, 9.4693, 23.3476

Details

The HunterLab color $51.4537, 9.4693, 23.3476$ is a dark color, and the websafe version is hex $CC9966$. A complement of this color would be $46.1208, -4.1427, -28.5455$, and the grayscale version is $51.2076, -2.7323, 2.7822$.

A 20% lighter version of the original color is $73.4692, 9.5052, 28.6772$, and $32.2874, 8.7735, 17.5396$ is the 20% darker color. If you saturate the color by 10%, you get $48.8981, 12.7842, 25.0353$, and if you desaturate by 10%, it is $54.1598, 6.4636, 21.0517$.

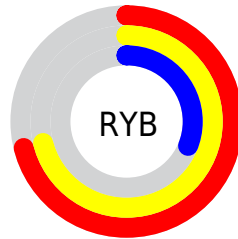
Distribution



Red (71%)

Green (51%)

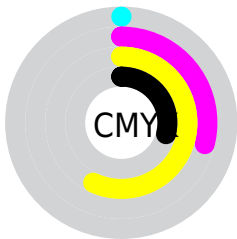
Blue (31%)



Red (71%)

Yellow (71%)

Blue (31%)

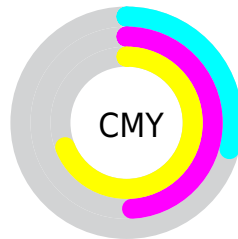


Cyan (0%)

Magenta (29%)

Yellow (57%)

Black (29%)



Cyan (29%)

Magenta (49%)

Yellow (69%)

Brightness & Saturation Gradients

These gradients show how the HunterLab color 51.4537, 9.4693, 23.3476 changes by changing the brightness by 10 percent. The first figure shows a shift by +10% for each color and the second figure -10%.

Similar to the brightness gradients but the following saturation gradients show a change of the HunterLab color 51.4537, 9.4693, 23.3476 by changing the saturation by 10% instead.

■ 51.4537, 9.4693,
23.3476

■ 51.4537, 9.4693,
23.3476

168.8525, 8.7002,
45.0287

■ 41.4490, 9.2294,
20.5033

■ 73.5133, 9.7036,
28.6435

■ 32.1917, 8.8973,
17.4759

■ 85.4873, 9.7195,
31.1464

■ 23.7494, 8.4541,
14.2113

■ 98.0490, 9.6755,
33.5773

■ 16.2100, 7.8766,
11.3470

■ 111.1719, 9.5764,
35.9493

■ 9.6983, 7.1328,
6.7888

■ 124.8331, 9.4261,
38.2729

0.0000, INF, NaN

0.0000, NaN, NaN

139.0122, 9.2281,

40.5564

0.0000, NaN, NaN

153.6908, 8.9853,
42.8065

0.0000, NaN, NaN

■ 51.4537, 9.4693,
23.3476

■ 51.4537, 9.4693,
23.3476

■ 48.8981, 12.7842,
25.0353

■ 54.1598, 6.4636,
21.0517

■ 46.5009, 16.4068,
26.0754

■ 57.0012, 3.7714,
18.1927

■ 44.2748, 20.3080,
26.4507

■ 59.9680, 1.3793,
14.8207

■ 42.2281, 24.4305,
26.1984

■ 63.0503, -0.7287,
10.9845

■ 41.5672, 25.8447,
26.0659

■ 66.2386, -2.5709,
6.7296

■ 69.5248, -4.1666,
2.0978

■ 72.9013, -5.5352,
-2.8737

■ 76.3613, -6.6951,
-8.1516

■ 79.8989, -7.6640,
-13.7066

Harmonies

Analogous

The Analogous color harmony consists of three colors that are next to each other on the color wheel.



51.4550, 24.1304, 17.8495



51.4537, 9.4693, 23.3476



51.4550, -6.9511, 24.3163

Triad

The Triadic color harmony groups three colors that are evenly spaced from another and form a triangle on the color wheel.



51.4550, 9.4668, 23.3482



51.4550, -30.0457, -1.4311



51.4550, 17.7618, -26.3994

Complementary

The Complementary color scheme is a pair of colors which are on the opposite of each other on the color wheel.



51.4537, 9.4693, 23.3476



46.1208, -4.1427, -28.5455

Split Complementary

Split-complementary colors differ from the complementary color scheme. The scheme consists of three colors, the original color and two neighbors of the complement color.



51.4550, 1.5939, -35.9113



51.4537, 9.4693, 23.3476



51.4550, -25.0382, -18.8632

Square

The Square scheme is like the rectangle color scheme, but the four colors are evenly spaced on the color wheel.



51.4550, 9.4668, 23.3482



51.4550, -28.4852, 12.7234



51.4550, -13.9205, -32.7945



51.4550, 29.3162, -9.6018

Rectangle

The Rectangle color scheme consists of four colors that form a rectangle on the color wheel.



51.4537, 9.4693, 23.3476



51.4550, -16.4950, 22.6709



51.4550, -13.9205, -32.7945



51.4550, 12.6127, -30.7583

Sweetspot

The Sweet Spot groups the original color and five complimentary colors.



51.4550, 9.4668, 23.3482



84.6024, -0.7958, 15.1684



41.4839, 40.4275, -5.0414



39.3663, -0.1191, 7.6317



96.5975, -5.1542, 5.2483



43.2801, -2.3093, 2.3515

Same Dimension

The Same Dimension uses a secret algorithm to generate beautiful new colors.



51.4550, 9.4668, 23.3482



64.9933, 18.4233, 34.1523



65.7773, -14.4831, 33.6102



31.1881, -0.9972, 3.7889



35.1206, 21.2773, 22.0136



7.4747, 2.1031, 4.6427

Inverse Universe

The Inverse Universe completely reimagines the original color for something new.



46.1208, -4.1427, -28.5455



56.4527, -2.7117, -49.5300



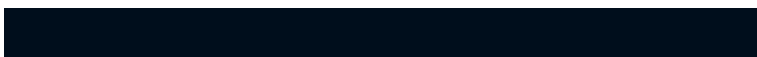
32.9890, 21.2117, -58.8402



30.7386, -2.1930, -0.5391



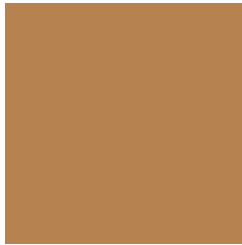
28.1222, 6.1629, -48.4542



6.3441, -0.7087, -6.3998

Previews

White Background



This preview shows how the HunterLab color 51.4537, 9.4693, 23.3476 looks on a white background.

Color Contrast Check

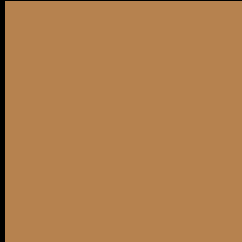
Large Text (above 18pt) WCAG AA ✓ Pass

Any Text WCAG AA × Fail

Large Text (above 18pt) WCAG AAA × Fail

Any Text WCAG AAA × Fail

Black Background



This preview shows how the HunterLab color 51.4537, 9.4693, 23.3476 looks on a black background.

Color Contrast Check

Large Text (above 18pt) WCAG AA ✓ Pass

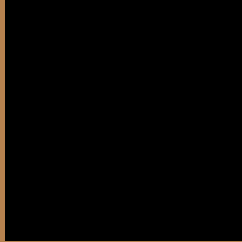
Any Text WCAG AA ✓ Pass

Large Text (above 18pt) WCAG AAA ✓ Pass

Any Text WCAG AAA × Fail

If you want to check with other color combinations, try the [Color Contrast Checker](#).

HunterLab 51.4537, 9.4693, 23.3476 Background



This preview shows how black text looks on a background with the HunterLab color 51.4537, 9.4693, 23.3476.



This preview shows how white text looks on a background with the HunterLab color 51.4537, 9.4693,

Color Blindness Simulation

Color vision deficiency is a very complex topic, and I could not describe the different causes any better than Wikipedia does, so if you want to learn more, you should check out their [article about color blindness](#).

Dichromacy



Original Color

51.4537, 9.4693, 23.3476

Protanopia

51.5212, -5.5822, 22.2318

Deuteranopia

51.3526, 3.6834, 23.3859



Tritanopia

51.5246, 19.6210, 6.5581

Trichromacy



Original Color

51.4537, 9.4693, 23.3476

Protanomaly

51.3741, -0.3371, 22.4380

Deuteranomaly

51.5318, 5.6553, 23.5598

Tritanomaly

51.4084, 15.7604, 13.9356

Monochromacy



Original Color

51.4537, 9.4693, 23.3476

Achromatopsia

51.2104, -2.7325, 2.7824

Achromatomaly

50.8772, 0.7522, 11.3898

CSS Examples

Text

The CSS property to change the color of the text to HunterLab 51.4537, 9.4693, 23.3476 is called "color". The color property can be set on classes, ids or directly on the HTML element.

This example shows how text in the color `rgb(182, 130, 79)` looks like.

```
.text, #text, p{  
    color:rgb(182, 130, 79)  
}
```

If you want to add a text shadow in that color use the text-shadow property, you can generate a text shadow directly with our [CSS Text Shadow Generator](#).

Here you see how black text with a 4 pixel rgb(182, 130, 79) colored shadow looks like.

```
.shadow{ text-shadow: 4px 4px 2px rgb(182, 130, 79) }
```

Border

The CSS property to change the border of an element to HunterLab 51.4537, 9.4693, 23.3476 is called "border". The border property can be set on classes, ids or directly on the HTML element.

This example shows the color as border, it can be applied via the CSS property "border" or "border-color".

```
.border, #border, table{ border:4px solid rgb(182, 130, 79) }
```


If only the border color should be changed use the property `border-color`.

```
.border{ border-color:rgb(182, 130, 79) }
```

If you want to add a box shadow in that color use:

Here you see how a box with a 4 pixel `rgb(182, 130, 79)` colored shadow looks like.

```
.boxshadow{ -moz-box-shadow:4px 4px 4px  
4px rgb(182, 130, 79); -webkit-box-  
shadow:4px 4px 4px 4px rgb(182, 130, 79);  
box-shadow:4px 4px 4px 4px rgb(182, 130,  
79) }
```

Background

The CSS property to change the background color of an element to HunterLab 51.4537, 9.4693, 23.3476 is called "background". The background property can be set on classes, ids or directly on the HTML element.

```
.background, #background, body{  
background: rgb(182, 130, 79) }
```

If only the background color should be changed can be used:

```
.background{ background-color: rgb(182,  
130, 79) }
```

This example shows the color as background, it is applied via the CSS property "background".

To optimize and compress your CSS code, you can use our [online CSS compressor and optimizer](#) based on csstidy. If you want to create a linear or radial gradient as background or border, check our [CSS Gradient Generator](#).

Hey! You found this booklet interesting? Support Converting Colors with the new Membership Option!

The pro membership hides all ads, plus gives you double the colors in the color bucket, and more awesome pro features!

[Learn more, Memberships starting at \\$2.50/m!](#)

**Follow me
on Twitter!**

@ConvertingColor