

Converting Colors

HunterLab(51.5157, 15.7730,
20.6522)

Have a look what the booklet for
HunterLab(51.5157, 15.7730,
20.6522) contains.

HunterLab(51.5986, 15.5058, 20.6934)	3
<i>Conversions</i>	4
<i>Details</i>	6
<i>Harmonies</i>	12
<i>Previews</i>	24
<i>Color Blindness Simulation</i>	28
<i>CSS Examples</i>	31

Color

**HunterLab(51.5986, 15.5058,
20.6934)**

Conversions

Conversions Part 1

Format	Color
Hex	BE7E5B
RGB	190, 126, 91
RGB Percent	75%, 49%, 36%
CMY	0.2549, 0.5059, 0.6431
CMYK	0.00, 0.34, 0.52, 0.25
HSL	21°, 43%, 55%
HSV	21°, 52%, 75%
XYZ	30.5843, 26.6242, 13.4245
YIQ	141.1460, 49.3790, 2.6830

Conversions

Conversions Part 2

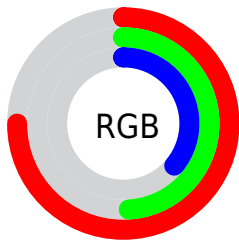
Format	Color
RYB	190, 145, 91
Decimal	12484187
CIELab	58.63, 20.97, 29.12
CIElCh	59, 35.884, 54.247
Yxy	26.6255, 0.4330, 0.3769
Android (android.graphics.Color)	4290674267 (0xFFBE7E5B)
YUV	141.1460, -24.7220, 42.8450
Hunter-Lab	51.5986, 15.5058, 20.6934

Details

The HunterLab color **51.5986, 15.5058, 20.6934** is a dark color, and the websafe version is hex **CC9966**. A complement of this color would be **54.2062, -11.4518, -20.0826**, and the grayscale version is **51.7507, -2.7613, 2.8117**.

A 20% lighter version of the original color is **73.7109, 16.4717, 25.1242**, and **32.1516, 14.3089, 15.6680** is the 20% darker color. If you saturate the color by 10%, you get **48.3604, 20.1615, 22.6356**, and if you desaturate by 10%, it is **55.0748, 11.1549, 18.2509**.

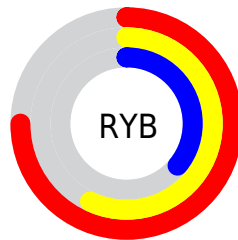
Distribution



Red (75%)

Green (49%)

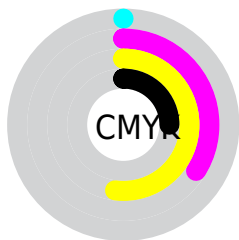
Blue (36%)



Red (75%)

Yellow (57%)

Blue (36%)

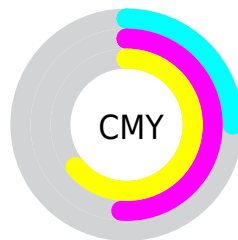


Cyan (0%)

Magenta (34%)

Yellow (52%)

Black (25%)



Cyan (25%)

Magenta (51%)

Yellow (64%)

Brightness & Saturation Gradients

These gradients show how the HunterLab color 51.5986, 15.5058, 20.6934 changes by changing the brightness by 10 percent. The first figure shows a shift by +10% for each color and the second figure -10%.

Similar to the brightness gradients but the following saturation gradients show a change of the HunterLab color 51.5986, 15.5058, 20.6934 by changing the saturation by 10% instead.

■ 51.5986, 15.5058,
20.6934

■ 51.5986, 15.5058,
20.6934

169.0678, 17.1550,
39.4684

■ 41.5838, 14.9390,
18.2901

■ 73.6765, 16.3498,
25.2043

■ 32.3156, 14.2635,
15.7438

■ 85.6590, 16.6519,
27.3535

■ 23.8614, 13.4592,
13.0048

■ 98.2286, 16.8832,
29.4515

■ 16.3086, 12.5048,
10.6555

■ 111.3592, 17.0497,
31.5087

■ 9.7815, 11.3820,
6.8470

125.0278, 17.1561,
33.5332

0.0000, INF, NaN

0.0000, NaN, NaN

139.2140, 17.2068,

35.5314

0.0000, NaN, NaN

153.8994, 17.2054,
37.5084

0.0000, NaN, NaN

■ 51.5986, 15.5058,
20.6934

■ 51.5986, 15.5058,
20.6934

■ 48.3604, 20.1615,
22.6356

■ 55.0748, 11.1549,
18.2509

■ 45.3844, 25.0961,
24.0046

■ 58.7596, 7.1241,
15.3753

■ 42.7012, 30.2360,
24.7402

■ 62.6313, 3.4019,
12.1299

■ 40.3388, 35.4598,
24.8130

■ 66.6700, -0.0300,
8.5684

■ 38.7077, 39.4923,
24.5429

■ 70.8585, -3.1946,
4.7361

■ 75.1819, -6.1162,
0.6703

■ 79.6274, -8.8191,
-3.5983

■ 84.1842, -11.3258,
-8.0444

■ 88.5838, -15.1033,
-9.0014

Harmonies

Analogous

The Analogous color harmony consists of three colors that are next to each other on the color wheel.



51.5999, 26.7675, 12.9936



51.5986, 15.5058, 20.6934



51.5999, 0.2139, 23.5561

Triad

The Triadic color harmony groups three colors that are evenly spaced from another and form a triangle on the color wheel.



51.5999, 15.5032, 20.6941



51.5999, -28.7912, 5.5252



51.5999, 9.8357, -29.6136

Complementary

The Complementary color scheme is a pair of colors which are on the opposite of each other on the color wheel.



51.5986, 15.5058, 20.6934



54.2062, -11.4518, -20.0826

Split Complementary

Split-complementary colors differ from the complementary color scheme. The scheme consists of three colors, the original color and two neighbors of the complement color.



51.5999, -5.6603, -33.3287



51.5986, 15.5058, 20.6934



51.5999, -26.8450, -9.9980

Square

The Square scheme is like the rectangle color scheme, but the four colors are evenly spaced on the color wheel.



51.5999, 15.5032, 20.6941



51.5999, -24.4454, 16.5840



51.5999, -18.7834, -25.3154



51.5999, 23.2387, -16.2741

Rectangle

The Rectangle color scheme consists of four colors that form a rectangle on the color wheel.



51.5986, 15.5058, 20.6934



51.5999, -9.7703, 23.1782



51.5999, -18.7834, -25.3154



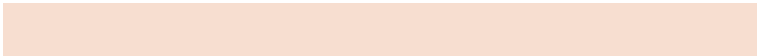
51.5999, 4.6542, -32.1654

Sweetspot

The Sweet Spot groups the original color and five complimentary colors.



51.5999, 15.5032, 20.6941



87.4642, 1.8334, 13.5739



45.6156, 41.1752, -11.6782



40.4555, 1.3110, 6.8286



98.8636, -5.2751, 5.3714



45.2661, -2.4153, 2.4594

Same Dimension

The Same Dimension uses a secret algorithm to generate beautiful new colors.



51.5999, 15.5032, 20.6941



64.3048, 28.3867, 30.8869



65.1312, -8.5133, 30.9744



31.7388, -0.4343, 3.5280



31.7774, 31.6226, 20.1347



7.2136, 3.9730, 4.5145

Inverse Universe

The Inverse Universe completely reimagines the original color for something new.



54.2062, -11.4518, -20.0826



68.4086, -15.0468, -34.6222



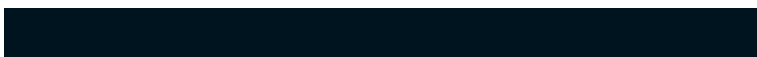
40.2732, 12.6148, -46.6810



31.9786, -2.8401, -0.1314



34.6611, -4.2603, -34.1266



7.6774, -2.0807, -5.1045

Previews

White Background



This preview shows how the HunterLab color 51.5986, 15.5058, 20.6934 looks on a white background.

Color Contrast Check

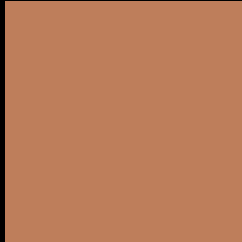
Large Text (above 18pt) WCAG AA ✓ Pass

Any Text WCAG AA × Fail

Large Text (above 18pt) WCAG AAA × Fail

Any Text WCAG AAA × Fail

Black Background



This preview shows how the HunterLab color 51.5986, 15.5058, 20.6934 looks on a black background.

Color Contrast Check

Large Text (above 18pt) WCAG AA ✓ Pass

Any Text WCAG AA ✓ Pass

Large Text (above 18pt) WCAG AAA ✓ Pass

Any Text WCAG AAA × Fail

If you want to check with other color combinations, try the [Color Contrast Checker](#).

HunterLab 51.5986, 15.5058, 20.6934 Background



This preview shows how black text looks on a background with the HunterLab color 51.5986, 15.5058, 20.6934.



This preview shows how white text looks on a background with the HunterLab color 51.5986, 15.5058,

Color Blindness Simulation

Color vision deficiency is a very complex topic, and I could not describe the different causes any better than Wikipedia does, so if you want to learn more, you should check out their [article about color blindness](#).

Dichromacy



Original Color

51.5986, 15.5058, 20.6934

Protanopia

51.6576, -4.6388, 18.7698

Deuteranopia

51.6790, 3.7243, 21.0664



Tritanopia

51.5984, 23.3755, 7.9366

Trichromacy



Original Color

51.5986, 15.5058, 20.6934

Protanomaly

51.5185, 1.9905, 19.3207

Deuteranomaly

51.6775, 7.8573, 20.8833

Tritanomaly

51.6075, 20.2771, 13.1726

Monochromacy



Original Color

51.5986, 15.5058, 20.6934

Achromatopsia

51.6097, -2.7538, 2.8041

Achromatomaly

51.3900, 2.7298, 10.0945

CSS Examples

Text

The CSS property to change the color of the text to HunterLab 51.5986, 15.5058, 20.6934 is called "color". The color property can be set on classes, ids or directly on the HTML element.

This example shows how text in the color `rgb(190, 126, 91)` looks like.

```
.text, #text, p{  
    color:rgb(190, 126, 91)  
}
```

If you want to add a text shadow in that color use the text-shadow property, you can generate a text shadow directly with our [CSS Text Shadow Generator](#).

Here you see how black text with a 4 pixel rgb(190, 126, 91) colored shadow looks like.

```
.shadow{ text-shadow: 4px 4px 2px rgb(190, 126, 91) }
```

Border

The CSS property to change the border of an element to HunterLab 51.5986, 15.5058, 20.6934 is called "border". The border property can be set on classes, ids or directly on the HTML element.

This example shows the color as border, it can be applied via the CSS property "border" or "border-color".

```
.border, #border, table{ border:4px solid rgb(190, 126, 91) }
```


If only the border color should be changed use the property `border-color`.

```
.border{ border-color:rgb(190, 126, 91) }
```

If you want to add a box shadow in that color use:

Here you see how a box with a 4 pixel `rgb(190, 126, 91)` colored shadow looks like.

```
.boxshadow{ -moz-box-shadow:4px 4px 4px  
4px rgb(190, 126, 91); -webkit-box-  
shadow:4px 4px 4px 4px rgb(190, 126, 91);  
box-shadow:4px 4px 4px 4px rgb(190, 126,  
91) }
```

Background

The CSS property to change the background color of an element to HunterLab 51.5986, 15.5058, 20.6934 is called "background". The background property can be set on classes, ids or directly on the HTML element.

```
.background, #background, body{  
background: rgb(190, 126, 91) }
```

If only the background color should be changed can be used:

```
.background{ background-color: rgb(190,  
126, 91) }
```

This example shows the color as background, it is applied via the CSS property "background".

To optimize and compress your CSS code, you can use our [online CSS compressor and optimizer](#) based on csstidy. If you want to create a linear or radial gradient as background or border, check our [CSS Gradient Generator](#).

Hey! You found this booklet interesting? Support Converting Colors with the new Membership Option!

The pro membership hides all ads, plus gives you double the colors in the color bucket, and more awesome pro features!

[Learn more, Memberships starting at \\$2.50/m!](#)

**Follow me
on Twitter!**

@ConvertingColor