

Converting Colors

HunterLab(51.5158, 6.1290,
23.5285)

Have a look what the booklet for
HunterLab(51.5158, 6.1290,
23.5285) contains.

HunterLab(51.6452, 6.0308, 23.6544)	3
<i>Conversions</i>	4
<i>Details</i>	6
<i>Harmonies</i>	12
<i>Previews</i>	24
<i>Color Blindness Simulation</i>	28
<i>CSS Examples</i>	31

Color

**HunterLab(51.6452, 6.0308,
23.6544)**

Conversions

Conversions Part 1

Format	Color
Hex	B1854E
RGB	177, 133, 78
RGB Percent	69%, 52%, 31%
CMY	0.3059, 0.4784, 0.6941
CMYK	0.00, 0.25, 0.56, 0.31
HSL	33°, 39%, 50%
HSV	33°, 56%, 69%
XYZ	27.8942, 26.6723, 10.8859
YIQ	139.8860, 43.8790, -7.7770

Conversions

Conversions Part 2

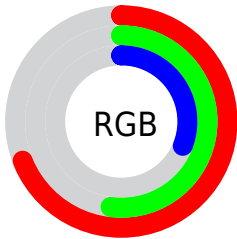
Format	Color
RYB	157, 177, 78
Decimal	11633998
CIELab	58.67, 10.42, 35.92
CIElCh	59, 37.397, 73.825
Yxy	26.6736, 0.4262, 0.4075
Android (android.graphics.Color)	4289824078 (0xFFB1854E)
YUV	139.8860, -30.5098, 32.5490
Hunter-Lab	51.6452, 6.0308, 23.6544

Details

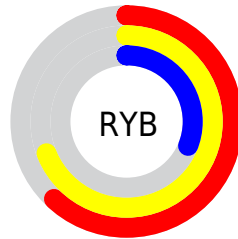
The HunterLab color $51.6452, 6.0308, 23.6544$ is a dark color, and the websafe version is hex $CC9966$. A complement of this color would be $43.2578, -1.2729, -30.3778$, and the grayscale version is $51.2715, -2.7357, 2.7857$.

A 20% lighter version of the original color is $73.7146, 5.9160, 29.1004$, and $32.4107, 5.5309, 17.6967$ is the 20% darker color. If you saturate the color by 10%, you get $49.3751, 8.6955, 25.3931$, and if you desaturate by 10%, it is $54.0350, 3.6653, 21.2965$.

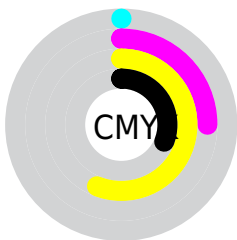
Distribution



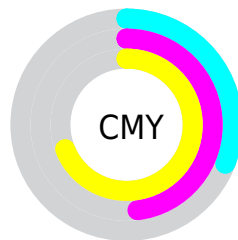
- Red (69%)
- Green (52%)
- Blue (31%)



- Red (62%)
- Yellow (69%)
- Blue (31%)



- Cyan (0%)
- Magenta (25%)
- Yellow (56%)
- Black (31%)



- Cyan (31%)
- Magenta (48%)
- Yellow (69%)

Brightness & Saturation Gradients

These gradients show how the HunterLab color 51.6452, 6.0308, 23.6544 changes by changing the brightness by 10 percent. The first figure shows a shift by +10% for each color and the second figure -10%.

Similar to the brightness gradients but the following saturation gradients show a change of the HunterLab color 51.6452, 6.0308, 23.6544 by changing the saturation by 10% instead.

■ 51.6452, 6.0308,
23.6544

■ 51.6452, 6.0308,
23.6544

169.1370, 3.7880,
45.6244

■ 41.6272, 5.9946,
20.7680

■ 73.7290, 5.8893,
29.0268

■ 32.3555, 5.8789,
17.6957

■ 85.7141, 5.7301,
31.5646

■ 23.8974, 5.6671,
14.3838

■ 98.2863, 5.5183,
34.0285

■ 16.3404, 5.3386,
11.4383

■ 111.4194, 5.2577,
36.4321

■ 9.8083, 4.8616,
6.8658

■ 125.0904, 4.9517,
38.7857

0.0000, INF, NaN

0.0000, NaN, NaN

139.2788, 4.6032,

41.0979

0.0000, NaN, NaN

153.9665, 4.2146,
43.3756

0.0000, NaN, NaN

■ 51.6452, 6.0308,
23.6544

■ 51.6452, 6.0308,
23.6544

■ 49.3751, 8.6955,
25.3931

■ 54.0350, 3.6653,
21.2965

■ 47.2281, 11.6628,
26.4845

■ 56.5332, 1.6013,
18.3543

■ 45.2120, 14.9142,
26.9217

■ 59.1339, -0.1741,
14.8693

■ 43.3309, 18.4128,
26.7397

■ 61.8301, -1.6748,
10.8839

■ 42.5985, 19.8640,
26.5968

■ 64.6152, -2.9168,
6.4394

■ 67.4831, -3.9167,
1.5749

■ 70.4283, -4.6915,
-3.6733

■ 73.4456, -5.2575,
-9.2722

■ 76.5303, -5.6305,
-15.1917

Harmonies

Analogous

The Analogous color harmony consists of three colors that are next to each other on the color wheel.



51.6465, 21.1760, 19.1549



51.6452, 6.0308, 23.6544



51.6465, -9.8561, 23.8147

Triad

The Triadic color harmony groups three colors that are evenly spaced from another and form a triangle on the color wheel.



51.6465, 6.0285, 23.6550



51.6465, -29.1964, -4.6245



51.6465, 20.1385, -22.8505

Complementary

The Complementary color scheme is a pair of colors which are on the opposite of each other on the color wheel.



51.6452, 6.0308, 23.6544



43.2578, -1.2729, -30.3778

Split Complementary

Split-complementary colors differ from the complementary color scheme. The scheme consists of three colors, the original color and two neighbors of the complement color.



51.6465, 4.7444, -34.1079



51.6452, 6.0308, 23.6544



51.6465, -22.9985, -21.6260

Square

The Square scheme is like the rectangle color scheme, but the four colors are evenly spaced on the color wheel.



51.6465, 6.0285, 23.6550



51.6465, -28.9408, 10.2679



51.6465, -10.9946, -33.6021



51.6465, 29.9707, -5.9554

Rectangle

The Rectangle color scheme consists of four colors that form a rectangle on the color wheel.



51.6452, 6.0308, 23.6544



51.6465, -18.6845, 21.5923



51.6465, -10.9946, -33.6021



51.6465, 15.3668, -27.6189

Sweetspot

The Sweet Spot groups the original color and five complimentary colors.



51.6465, 6.0285, 23.6550



82.2479, -1.9892, 15.3280



40.2678, 37.7055, -1.9015



37.9592, -0.7530, 7.6337



94.3401, -5.0338, 5.1257



41.3092, -2.2042, 2.2444

Same Dimension

The Same Dimension uses a secret algorithm to generate beautiful new colors.



51.6465, 6.0285, 23.6550



65.4267, 12.4818, 34.3817



63.8518, -16.3528, 32.3658



30.4335, -1.2062, 3.8234



36.4285, 16.5412, 22.7366



7.2917, 1.2577, 4.5151

Inverse Universe

The Inverse Universe completely reimagines the original color for something new.



43.2578, -1.2729, -30.3778



52.1325, 1.7489, -52.5686



32.3422, 21.9013, -55.9395



29.7172, -1.8950, -0.6881



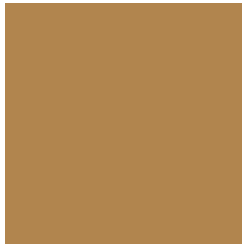
25.3641, 10.6216, -54.6319



5.6516, -0.2751, -6.4701

Previews

White Background



This preview shows how the HunterLab color 51.6452, 6.0308, 23.6544 looks on a white background.

Color Contrast Check

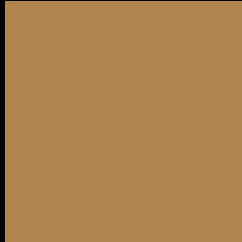
Large Text (above 18pt) WCAG AA ✓ Pass

Any Text WCAG AA × Fail

Large Text (above 18pt) WCAG AAA × Fail

Any Text WCAG AAA × Fail

Black Background



This preview shows how the HunterLab color 51.6452, 6.0308, 23.6544 looks on a black background.

Color Contrast Check

Large Text (above 18pt) WCAG AA ✓ Pass

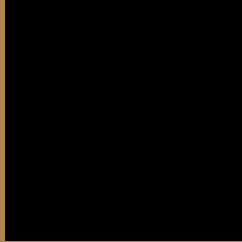
Any Text WCAG AA ✓ Pass

Large Text (above 18pt) WCAG AAA ✓ Pass

Any Text WCAG AAA × Fail

If you want to check with other color combinations, try the [Color Contrast Checker](#).

HunterLab 51.6452, 6.0308, 23.6544 Background



This preview shows how black text looks on a background with the HunterLab color 51.6452, 6.0308, 23.6544.



This preview shows how white text looks on a background with the HunterLab color 51.6452, 6.0308,

23.6544.

Color Blindness Simulation

Color vision deficiency is a very complex topic, and I could not describe the different causes any better than Wikipedia does, so if you want to learn more, you should check out their [article about color blindness](#).

Dichromacy



Original Color

51.6452, 6.0308, 23.6544

Protanopia

51.5872, -5.4080, 22.7462

Deuteranopia

51.7322, 3.5719, 23.6790



Tritanopia

51.6182, 17.5472, 5.3596

Trichromacy



Original Color

51.6452, 6.0308, 23.6544

Protanomaly

51.5196, -1.3219, 22.9889

Deuteranomaly

51.5741, 4.4247, 23.5712

Tritanomaly

51.6155, 12.6155, 13.3948

Monochromacy



Original Color

51.6452, 6.0308, 23.6544

Achromatopsia

51.2104, -2.7325, 2.7824

Achromatomaly

50.9392, -0.5108, 11.7909

CSS Examples

Text

The CSS property to change the color of the text to HunterLab 51.6452, 6.0308, 23.6544 is called "color". The color property can be set on classes, ids or directly on the HTML element.

This example shows how text in the color `rgb(177, 133, 78)` looks like.

```
.text, #text, p{  
    color:rgb(177, 133, 78)  
}
```

If you want to add a text shadow in that color use the text-shadow property, you can generate a text shadow directly with our [CSS Text Shadow Generator](#).

Here you see how black text with a 4 pixel rgb(177, 133, 78) colored shadow looks like.

```
.shadow{ text-shadow: 4px 4px 2px rgb(177, 133, 78) }
```

Border

The CSS property to change the border of an element to HunterLab 51.6452, 6.0308, 23.6544 is called "border". The border property can be set on classes, ids or directly on the HTML element.

This example shows the color as border, it can be applied via the CSS property "border" or "border-color".

```
.border, #border, table{ border:4px solid rgb(177, 133, 78) }
```


If only the border color should be changed use the property `border-color`.

```
.border{ border-color:rgb(177, 133, 78) }
```

If you want to add a box shadow in that color use:

Here you see how a box with a 4 pixel `rgb(177, 133, 78)` colored shadow looks like.

```
.boxshadow{ -moz-box-shadow:4px 4px 4px  
4px rgb(177, 133, 78); -webkit-box-  
shadow:4px 4px 4px 4px rgb(177, 133, 78);  
box-shadow:4px 4px 4px 4px rgb(177, 133,  
78) }
```

Background

The CSS property to change the background color of an element to HunterLab 51.6452, 6.0308, 23.6544 is called "background". The background property can be set on classes, ids or directly on the HTML element.

```
.background, #background, body{  
background: rgb(177, 133, 78) }
```

If only the background color should be changed can be used:

```
.background{ background-color: rgb(177,  
133, 78) }
```

This example shows the color as background, it is applied via the CSS property "background".

To optimize and compress your CSS code, you can use our [online CSS compressor and optimizer](#) based on csstidy. If you want to create a linear or radial gradient as background or border, check our [CSS Gradient Generator](#).

Hey! You found this booklet interesting? Support Converting Colors with the new Membership Option!

The pro membership hides all ads, plus gives you double the colors in the color bucket, and more awesome pro features!

[Learn more, Memberships starting at \\$2.50/m!](#)

**Follow me
on Twitter!**

@ConvertingColor