

Converting Colors

HunterLab(51.5849, 15.7412,
11.4133)

Have a look what the booklet for
HunterLab(51.5849, 15.7412,
11.4133) contains.

HunterLab(51.7200, 15.8160, 11.4097)	3
<i>Conversions</i>	4
<i>Details</i>	6
<i>Harmonies</i>	12
<i>Previews</i>	24
<i>Color Blindness Simulation</i>	28
<i>CSS Examples</i>	31

Color

**HunterLab(51.7200, 15.8160,
11.4097)**

Conversions

Conversions Part 1

Format	Color
Hex	B87F79
RGB	184, 127, 121
RGB Percent	72%, 50%, 47%
CMY	0.2784, 0.5019, 0.5255
CMYK	0.00, 0.31, 0.34, 0.28
HSL	6°, 31%, 60%
HSV	6°, 34%, 72%
XYZ	30.8077, 26.7496, 21.6286
YIQ	143.3590, 35.8980, 10.2180

Conversions

Conversions Part 2

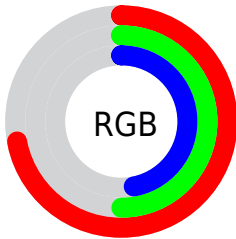
Format	Color
RYB	184, 128, 121
Decimal	12091257
CIELab	58.74, 21.30, 12.17
CIELCh	59, 24.528, 29.750
Yxy	26.7509, 0.3891, 0.3378
Android (android.graphics.Color)	4290281337 (0xFFB87F79)
YUV	143.3590, -11.0230, 35.6422
Hunter-Lab	51.7200, 15.8160, 11.4097

Details

The HunterLab color **51.7200, 15.8160, 11.4097** is a dark color, and the websafe version is hex **CC9999**. A complement of this color would be **62.7415, -17.4583, -4.4974**, and the grayscale version is **52.5872, -2.8059, 2.8572**.

A 20% lighter version of the original color is **73.7295, 16.5723, 13.9295**, and **32.3153, 14.5762, 8.9191** is the 20% darker color. If you saturate the color by 10%, you get **47.3191, 22.0983, 13.5977**, and if you desaturate by 10%, it is **56.4865, 9.7824, 9.1780**.

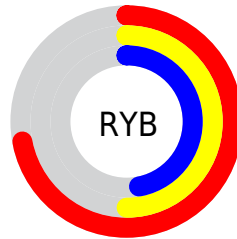
Distribution



Red (72%)

Green (50%)

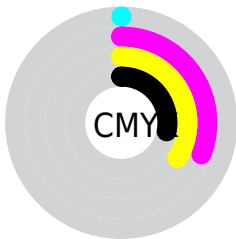
Blue (47%)



Red (72%)

Yellow (50%)

Blue (47%)

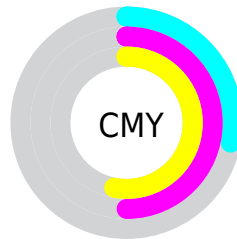


Cyan (0%)

Magenta (31%)

Yellow (34%)

Black (28%)



Cyan (28%)

Magenta (50%)

Yellow (53%)

Brightness & Saturation Gradients

These gradients show how the HunterLab color 51.7200, 15.8160, 11.4097 changes by changing the brightness by 10 percent. The first figure shows a shift by +10% for each color and the second figure -10%.

Similar to the brightness gradients but the following saturation gradients show a change of the HunterLab color 51.7200, 15.8160, 11.4097 by changing the saturation by 10% instead.

■ 51.7200, 15.8160,
11.4097

■ 51.7200, 15.8160,
11.4097

169.2480, 17.5763,
22.6649

■ 41.6968, 15.2351,
10.1495

■ 73.8132, 16.6878,
13.8954

■ 32.4195, 14.5446,
8.8620

■ 85.8026, 17.0029,
15.1321

■ 23.9553, 13.7249,
7.5296

■ 98.3790, 17.2469,
16.3706

■ 16.3913, 12.7550,
6.1205

111.5160, 17.4255,
17.6135

■ 9.8513, 11.6176,
5.6744

125.1908, 17.5438,
18.8631

0.0000, INF, NaN

0.0000, NaN, NaN

139.3829, 17.6061,

20.1207

0.0000, NaN, NaN

154.0741, 17.6159,
21.3877

0.0000, NaN, NaN

■ 51.7200, 15.8160,
11.4097

■ 51.7200, 15.8160,
11.4097

■ 47.3191, 22.0983,
13.5977

■ 56.4865, 9.7824,
9.1780

■ 43.3450, 28.5508,
15.6793

■ 61.5607, 4.0306,
6.9357

■ 39.8726, 34.9930,
17.5633

■ 66.8993, -1.4487,
4.7028

■ 36.9792, 41.1253,
19.1262

■ 72.4666, -6.6781,
2.4880

■ 34.7326, 46.5320,
20.2323

■ 78.2336, -11.6867,
0.2942

■ 33.1712, 50.7586,
20.7840

■ 84.1767, -16.5037,
-1.8790

■ 32.5700, 52.4812,
20.9883

■ 90.2768, -21.1570,
-4.0337

■ 94.3029, -25.7605,
-1.8236

Harmonies

Analogous

The Analogous color harmony consists of three colors that are next to each other on the color wheel.



51.7212, 18.8442, 2.7320



51.7200, 15.8160, 11.4097



51.7212, 7.7265, 16.7254

Triad

The Triadic color harmony groups three colors that are evenly spaced from another and form a triangle on the color wheel.



51.7212, 15.8137, 11.4106



51.7212, -18.9620, 11.5286



51.7212, -2.8500, -20.1091

Complementary

The Complementary color scheme is a pair of colors which are on the opposite of each other on the color wheel.



51.7200, 15.8160, 11.4097



62.7415, -17.4583, -4.4974

Split Complementary

Split-complementary colors differ from the complementary color scheme. The scheme consists of three colors, the original color and two neighbors of the complement color.



51.7212, -12.4770, -16.5105



51.7200, 15.8160, 11.4097



51.7212, -21.3174, 2.8985

Square

The Square scheme is like the rectangle color scheme, but the four colors are evenly spaced on the color wheel.



51.7212, 15.8137, 11.4106



51.7212, -12.3367, 16.7834



51.7212, -19.0383, -7.5670



51.7212, 7.5632, -16.6235

Rectangle

The Rectangle color scheme consists of four colors that form a rectangle on the color wheel.



51.7200, 15.8160, 11.4097



51.7212, 0.8525, 18.2821



51.7212, -19.0383, -7.5670



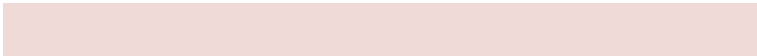
51.7212, -6.2808, -19.6794

Sweetspot

The Sweet Spot groups the original color and five complimentary colors.



51.7212, 15.8137, 11.4106



85.7712, 2.3805, 8.1118



52.0672, 27.8983, -15.8413



39.3620, 1.5866, 3.9612



96.5975, -5.1542, 5.2483



43.2801, -2.3093, 2.3515

Same Dimension

The Same Dimension uses a secret algorithm to generate beautiful new colors.



51.7212, 15.8137, 11.4106



65.1719, 27.5653, 17.5658



59.9496, 0.5000, 19.0589



30.2427, 0.6183, 2.7529



27.1290, 43.2695, 17.4742



5.5282, 6.7695, 3.5250

Inverse Universe

The Inverse Universe completely reimagines the original color for something new.



62.7415, -17.4583, -4.4974



82.9175, -26.4247, -8.1495



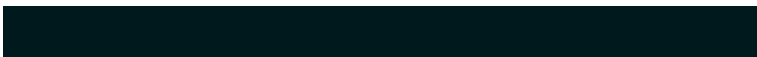
53.3584, -3.0213, -17.5622



31.7181, -3.7792, 0.6371



46.2105, -21.1996, -11.9954



8.9194, -4.2831, -1.9025

Previews

White Background



This preview shows how the HunterLab color 51.7200, 15.8160, 11.4097 looks on a white background.

Color Contrast Check

Large Text (above 18pt) WCAG AA ✓ Pass

Any Text WCAG AA × Fail

Large Text (above 18pt) WCAG AAA × Fail

Any Text WCAG AAA × Fail

Black Background



This preview shows how the HunterLab color 51.7200, 15.8160, 11.4097 looks on a black background.

Color Contrast Check

Large Text (above 18pt) WCAG AA ✓ Pass

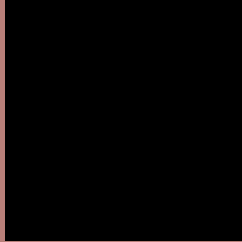
Any Text WCAG AA ✓ Pass

Large Text (above 18pt) WCAG AAA ✓ Pass

Any Text WCAG AAA × Fail

If you want to check with other color combinations, try the [Color Contrast Checker](#).

HunterLab 51.7200, 15.8160, 11.4097 Background



This preview shows how black text looks on a background with the HunterLab color 51.7200, 15.8160, 11.4097.



This preview shows how white text looks on a background with the HunterLab color 51.7200, 15.8160,

Color Blindness Simulation

Color vision deficiency is a very complex topic, and I could not describe the different causes any better than Wikipedia does, so if you want to learn more, you should check out their [article about color blindness](#).

Dichromacy



Original Color

51.7200, 15.8160, 11.4097

Protanopia

51.7796, -2.8675, 8.4720

Deuteranopia

51.6979, 3.5753, 11.9028



Tritanopia

51.6747, 18.8781, 6.2941

Trichromacy



Original Color

51.7200, 15.8160, 11.4097

Protanomaly

51.5389, 3.3294, 9.4963

Deuteranomaly

51.7581, 7.9614, 11.6774

Tritanomaly

51.7890, 17.7015, 8.4450

Monochromacy



Original Color

51.7200, 15.8160, 11.4097

Achromatopsia

52.4097, -2.7964, 2.8475

Achromatomaly

51.8746, 3.5695, 5.8290

CSS Examples

Text

The CSS property to change the color of the text to HunterLab 51.7200, 15.8160, 11.4097 is called "color". The color property can be set on classes, ids or directly on the HTML element.

This example shows how text in the color `rgb(184, 127, 121)` looks like.

```
.text, #text, p{  
    color:rgb(184, 127, 121)  
}
```

If you want to add a text shadow in that color use the text-shadow property, you can generate a text shadow directly with our [CSS Text Shadow Generator](#).

Here you see how black text with a 4 pixel rgb(184, 127, 121) colored shadow looks like.

```
.shadow{ text-shadow: 4px 4px 2px rgb(184, 127, 121) }
```

Border

The CSS property to change the border of an element to HunterLab 51.7200, 15.8160, 11.4097 is called "border". The border property can be set on classes, ids or directly on the HTML element.

This example shows the color as border, it can be applied via the CSS property "border" or "border-color".

```
.border, #border, table{ border:4px solid rgb(184, 127, 121) }
```


If only the border color should be changed use the property `border-color`.

```
.border{ border-color:rgb(184, 127, 121) }
```

If you want to add a box shadow in that color use:

Here you see how a box with a 4 pixel `rgb(184, 127, 121)` colored shadow looks like.

```
.boxshadow{ -moz-box-shadow:4px 4px 4px  
4px rgb(184, 127, 121); -webkit-box-  
shadow:4px 4px 4px 4px rgb(184, 127, 121);  
box-shadow:4px 4px 4px 4px rgb(184, 127,  
121) }
```

Background

The CSS property to change the background color of an element to HunterLab 51.7200, 15.8160, 11.4097 is called "background". The background property can be set on classes, ids or directly on the HTML element.

```
.background, #background, body{  
background: rgb(184, 127, 121) }
```

If only the background color should be changed can be used:

```
.background{ background-color: rgb(184,  
127, 121) }
```

This example shows the color as background, it is applied via the CSS property "background".

To optimize and compress your CSS code, you can use our [online CSS compressor and optimizer](#) based on csstidy. If you want to create a linear or radial gradient as background or border, check our [CSS Gradient Generator](#).

Hey! You found this booklet interesting? Support Converting Colors with the new Membership Option!

The pro membership hides all ads, plus gives you double the colors in the color bucket, and more awesome pro features!

[Learn more, Memberships starting at \\$2.50/m!](#)

**Follow me
on Twitter!**

@ConvertingColor