

Converting Colors

HunterLab(51.5999, 15.1053,
21.5656)

Have a look what the booklet for
HunterLab(51.5999, 15.1053,
21.5656) contains.

HunterLab(51.5494, 15.2536, 21.4127)	3
<i>Conversions</i>	4
<i>Details</i>	6
<i>Harmonies</i>	12
<i>Previews</i>	24
<i>Color Blindness Simulation</i>	28
<i>CSS Examples</i>	31

Color

**HunterLab(51.5494, 15.2536,
21.4127)**

Conversions

Conversions Part 1

Format	Color
Hex	BE7E58
RGB	190, 126, 88
RGB Percent	75%, 49%, 35%
CMY	0.2549, 0.5059, 0.6549
CMYK	0.00, 0.34, 0.54, 0.25
HSL	22°, 44%, 55%
HSV	22°, 54%, 75%
XYZ	30.4575, 26.5734, 12.7564
YIQ	140.8040, 50.3420, 1.7500

Conversions

Conversions Part 2

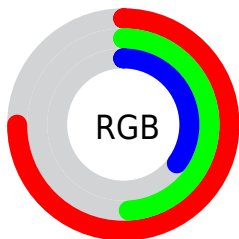
Format	Color
R_{YB}	190, 149, 88
Decimal	12484184
CIE _{Lab}	58.58, 20.70, 30.72
CIE _{LCh}	59, 37.041, 56.030
Yxy	26.5747, 0.4364, 0.3808
Android (android.graphics.Color)	4290674264 (0xFFBE7E58)
YUV	140.8040, -26.0324, 43.1449
Hunter-Lab	51.5494, 15.2536, 21.4127

Details

The HunterLab color **51.5494, 15.2536, 21.4127** is a dark color, and the websafe version is hex **CC9966**. A complement of this color would be **53.1484, -10.5702, -21.7795**, and the grayscale version is **51.6189, -2.7543, 2.8046**.

A 20% lighter version of the original color is **73.6505, 16.1577, 26.0025**, and **32.3333, 13.6778, 16.3162** is the 20% darker color. If you saturate the color by 10%, you get **48.4050, 19.7846, 23.2768**, and if you desaturate by 10%, it is **54.9221, 11.0306, 19.0193**.

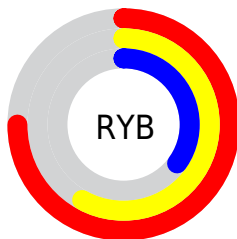
Distribution



Red (75%)

Green (49%)

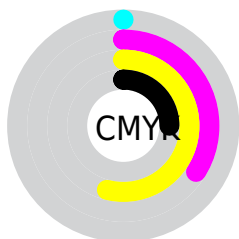
Blue (35%)



Red (75%)

Yellow (58%)

Blue (35%)

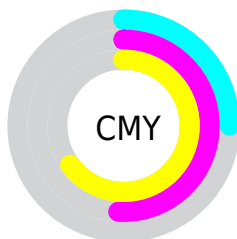


Cyan (0%)

Magenta (34%)

Yellow (54%)

Black (25%)



Cyan (25%)

Magenta (51%)

Yellow (65%)

Brightness & Saturation Gradients

These gradients show how the HunterLab color 51.5494, 15.2536, 21.4127 changes by changing the brightness by 10 percent. The first figure shows a shift by +10% for each color and the second figure -10%.

Similar to the brightness gradients but the following saturation gradients show a change of the HunterLab color 51.5494, 15.2536, 21.4127 by changing the saturation by 10% instead.

■ 51.5494, 15.2536,
21.4127

■ 51.5494, 15.2536,
21.4127

168.9947, 16.8085,
40.9339

■ 41.5380, 14.6992,
18.8958

■ 73.6211, 16.0741,
26.1254

■ 32.2735, 14.0367,
16.2250

■ 85.6007, 16.3651,
28.3654

■ 23.8233, 13.2458,
13.3491

■ 98.1676, 16.5857,
30.5488

■ 16.2751, 12.3050,
11.0582

■ 111.2957, 16.7418,
32.6868

■ 9.7532, 11.1952,
6.8273

■ 124.9617, 16.8382,
34.7881

0.0000, INF, NaN

0.0000, NaN, NaN

139.1455, 16.8791,

36.8595

0.0000, NaN, NaN

153.8286, 16.8682,
38.9065

0.0000, NaN, NaN

■ 51.5494, 15.2536,
21.4127

■ 51.5494, 15.2536,
21.4127

■ 48.4050, 19.7846,
23.2768

■ 54.9221, 11.0306,
19.0193

■ 45.5108, 24.6001,
24.5428

■ 58.4955, 7.1303,
16.1623

■ 42.8946, 29.6309,
25.1582

■ 62.2497, 3.5413,
12.9051

■ 40.5812, 34.7637,
25.1063

■ 66.1658, 0.2459,
9.3028

■ 39.2775, 37.9492,
24.8670

■ 70.2276, -2.7784,
5.4024

■ 74.4209, -5.5555,
1.2437

■ 78.7335, -8.1091,
-3.1406

■ 83.1549, -10.4617,
-7.7229

■ 87.5272, -13.4625,
-10.3881

Harmonies

Analogous

The Analogous color harmony consists of three colors that are next to each other on the color wheel.



51.5507, 27.3234, 13.8990



51.5494, 15.2536, 21.4127



51.5507, -0.6434, 24.0420

Triad

The Triadic color harmony groups three colors that are evenly spaced from another and form a triangle on the color wheel.



51.5507, 15.2510, 21.4134



51.5507, -29.5803, 4.7578



51.5507, 11.1966, -30.3037

Complementary

The Complementary color scheme is a pair of colors which are on the opposite of each other on the color wheel.



51.5494, 15.2536, 21.4127



53.1484, -10.5702, -21.7795

Split Complementary

Split-complementary colors differ from the complementary color scheme. The scheme consists of three colors, the original color and two neighbors of the complement color.



51.5507, -4.8299, -34.9205



51.5494, 15.2536, 21.4127



51.5507, -27.2045, -11.4780

Square

The Square scheme is like the rectangle color scheme, but the four colors are evenly spaced on the color wheel.



51.5507, 15.2510, 21.4134



51.5507, -25.5073, 16.4283



51.5507, -18.5824, -27.1980



51.5507, 24.7927, -15.9896

Rectangle

The Rectangle color scheme consists of four colors that form a rectangle on the color wheel.



51.5494, 15.2536, 21.4127



51.5507, -10.8393, 23.5012



51.5507, -18.5824, -27.1980



51.5507, 5.8638, -33.1957

Sweetspot

The Sweet Spot groups the original color and five complimentary colors.



51.5507, 15.2510, 21.4134



87.6926, 1.4375, 13.8128



44.9594, 42.1823, -11.0729



40.5754, 1.1017, 6.9524



98.8636, -5.2751, 5.3714



45.2661, -2.4153, 2.4594

Same Dimension

The Same Dimension uses a secret algorithm to generate beautiful new colors.



51.5507, 15.2510, 21.4134



64.6133, 27.4896, 31.6139



65.4671, -9.3209, 31.8157



31.7853, -0.5135, 3.5788



32.2454, 30.3669, 20.4011



7.3061, 3.7650, 4.5679

Inverse Universe

The Inverse Universe completely reimagines the original color for something new.



53.1484, -10.5702, -21.7795



67.0720, -13.5087, -36.9436



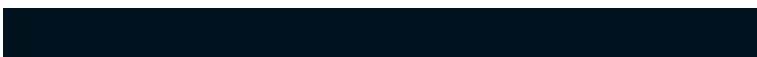
39.0089, 14.2424, -49.7559



31.9307, -2.7621, -0.1893



33.8118, -2.8924, -36.0180



7.5454, -1.8887, -5.3540

Previews

White Background



This preview shows how the HunterLab color 51.5494, 15.2536, 21.4127 looks on a white background.

Color Contrast Check

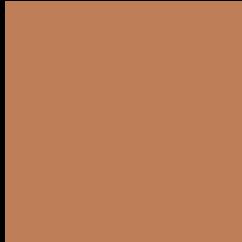
Large Text (above 18pt) WCAG AA ✓ Pass

Any Text WCAG AA × Fail

Large Text (above 18pt) WCAG AAA × Fail

Any Text WCAG AAA × Fail

Black Background



This preview shows how the HunterLab color 51.5494, 15.2536, 21.4127 looks on a black background.

Color Contrast Check

Large Text (above 18pt) WCAG AA ✓ Pass

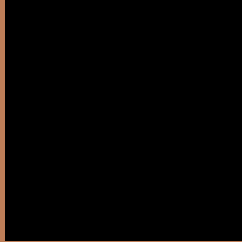
Any Text WCAG AA ✓ Pass

Large Text (above 18pt) WCAG AAA ✓ Pass

Any Text WCAG AAA × Fail

If you want to check with other color combinations, try the [Color Contrast Checker](#).

HunterLab 51.5494, 15.2536, 21.4127 Background



This preview shows how black text looks on a background with the HunterLab color 51.5494, 15.2536, 21.4127.



This preview shows how white text looks on a background with the HunterLab color 51.5494, 15.2536,

Color Blindness Simulation

Color vision deficiency is a very complex topic, and I could not describe the different causes any better than Wikipedia does, so if you want to learn more, you should check out their [article about color blindness](#).

Dichromacy



Original Color

51.5494, 15.2536, 21.4127

Protanopia

51.6045, -4.9323, 19.5453

Deuteranopia

51.6312, 3.4683, 21.7655



Tritanopia

51.5984, 23.3755, 7.9366

Trichromacy



Original Color

51.5494, 15.2536, 21.4127

Protanomaly

51.4665, 1.7104, 20.0790

Deuteranomaly

51.6291, 7.6017, 21.5919

Tritanomaly

51.5851, 20.1641, 13.4972

Monochromacy



Original Color

51.5494, 15.2536, 21.4127

Achromatopsia

51.6097, -2.7538, 2.8041

Achromatomaly

51.3657, 2.5995, 10.4440

CSS Examples

Text

The CSS property to change the color of the text to HunterLab 51.5494, 15.2536, 21.4127 is called "color". The color property can be set on classes, ids or directly on the HTML element.

This example shows how text in the color `rgb(190, 126, 88)` looks like.

```
.text, #text, p{  
    color:rgb(190, 126, 88)  
}
```

If you want to add a text shadow in that color use the text-shadow property, you can generate a text shadow directly with our [CSS Text Shadow Generator](#).

Here you see how black text with a 4 pixel rgb(190, 126, 88) colored shadow looks like.

```
.shadow{ text-shadow: 4px 4px 2px rgb(190, 126, 88) }
```

Border

The CSS property to change the border of an element to HunterLab 51.5494, 15.2536, 21.4127 is called "border". The border property can be set on classes, ids or directly on the HTML element.

This example shows the color as border, it can be applied via the CSS property "border" or "border-color".

```
.border, #border, table{ border:4px solid rgb(190, 126, 88) }
```


If only the border color should be changed use the property `border-color`.

```
.border{ border-color:rgb(190, 126, 88) }
```

If you want to add a box shadow in that color use:

Here you see how a box with a 4 pixel `rgb(190, 126, 88)` colored shadow looks like.

```
.boxshadow{ -moz-box-shadow:4px 4px 4px  
4px rgb(190, 126, 88); -webkit-box-  
shadow:4px 4px 4px 4px rgb(190, 126, 88);  
box-shadow:4px 4px 4px 4px rgb(190, 126,  
88) }
```

Background

The CSS property to change the background color of an element to HunterLab 51.5494, 15.2536, 21.4127 is called "background". The background property can be set on classes, ids or directly on the HTML element.

```
.background, #background, body{  
background: rgb(190, 126, 88) }
```

If only the background color should be changed can be used:

```
.background{ background-color: rgb(190,  
126, 88) }
```

This example shows the color as background, it is applied via the CSS property "background".

To optimize and compress your CSS code, you can use our [online CSS compressor and optimizer](#) based on csstidy. If you want to create a linear or radial gradient as background or border, check our [CSS Gradient Generator](#).

Hey! You found this booklet interesting? Support Converting Colors with the new Membership Option!

The pro membership hides all ads, plus gives you double the colors in the color bucket, and more awesome pro features!

[Learn more, Memberships starting at \\$2.50/m!](#)

**Follow me
on Twitter!**

@ConvertingColor